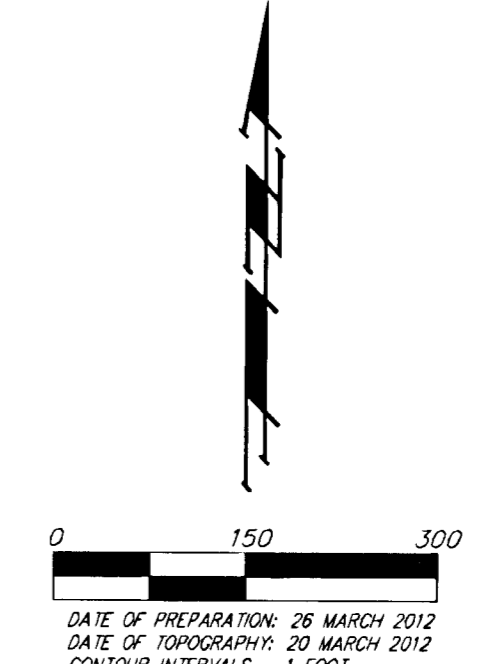
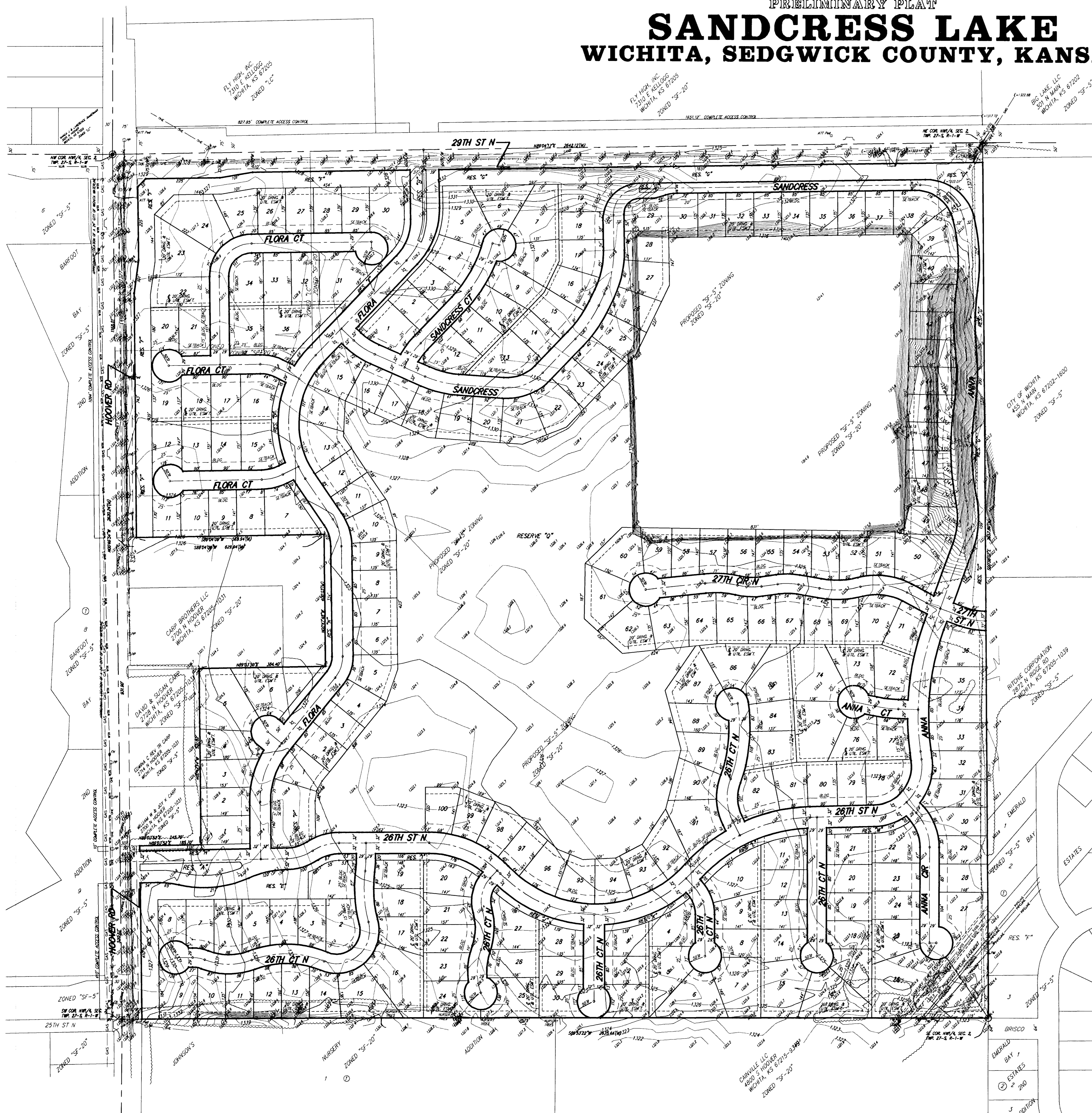


PRELIMINARY PLAT
SANDCRESS LAKE
 WICHITA, SEDGWICK COUNTY, KANSAS



DATE OF PREPARATION: 26 MARCH 2012
 DATE OF TOPOGRAPHY: 20 MARCH 2012
 CONTIGUOUS INTERVALS = 1 FOOT

OWNER:
 LAFARGE NORTH AMERICA, INC.
 ATTN: CHRIS BLASDEL
 9228 E. 37TH ST. N.
 WICHITA, 67228
 316-613-5100

CONTRACT PURCHASER:
 FLY HIGH, INC.
 ATTN: JAY RUSSELL
 PO BOX 75332
 WICHITA, KS 67275
 316-722-2417

FLY HIGH, INC.
 ATTN: LES ECK
 2310 E. KELLLOGG
 WICHITA, KS 67207
 685-9211

LEGAL DESCRIPTION:
 THE NORTHWEST QUARTER OF SECTION 2, TOWNSHIP 27 SOUTH, RANGE 1 WEST OF THE SIXTH P.M. SEDGWICK COUNTY, KANSAS, TOGETHER WITH THE SOUTH HALF OF THE NORTHWEST QUARTER OF SAID SECTION 2, EXCEPT EXISTING ROAD RIGHT-OF-WAY AND EXCEPT COMMENCING AT THE NORTHWEST CORNER OF SAID NORTHWEST QUARTER, THENCE SOUTH ALONG THE WEST LINE OF SAID NORTHWEST QUARTER 118.8 FEET TO THE POINT OF BEGINNING, THENCE CONTINUING SOUTH ALONG THE WEST LINE OF SAID NORTHWEST QUARTER 831.9 FEET, THENCE EAST PARALLEL WITH THE NORTH LINE OF SAID NORTHWEST QUARTER 245.7 FEET, THENCE NORTH PARALLEL WITH THE WEST LINE OF SAID NORTHWEST QUARTER 531.9 FEET, THENCE EAST PARALLEL WITH THE NORTH LINE OF SAID NORTHWEST QUARTER 384.3 FEET, THENCE NORTH PARALLEL WITH THE WEST LINE OF SAID NORTHWEST QUARTER 400 FEET, THENCE WEST PARALLEL WITH THE NORTH LINE OF SAID NORTHWEST QUARTER 830 FEET TO THE POINT OF BEGINNING.

BENCHMARK:
 CITY OF WICHITA DISC W1/4 CORNER
 ELEV. = 1329.57 NAVD83
 CITY OF WICHITA DISC NW CORNER
 ELEV. = 1330.50 NAVD83
 CITY OF WICHITA DISC W1/4 CORNER
 ELEV. = 1325.19 NAVD83

PP □ = Power Pole
 Sign □ = Sign
 SSM □ = Sanitary Sewer Manhole
 ATT Ped □ = ATT Pedestal
 T ○ = Tree
 CW ○ = Cased Well
 WV □ = Water Valve
 CP ○ = Cable TV Pedestal
 FH ○ = Fire Hydrant
 GUY □ = GUY ANCHOR
 PM □ = Pipeline Marker

WATER LINE
 SOUTHWESTERN BELL
 GAS
 CABLE TV
 OVERHEAD ELECTRIC LINE
 SANITARY SEWER
 UNDERGROUND ELECTRIC LINE
 PIPELINE

● = #4 REBAR W/ "BAUGHMAN" CAP (SET)
 ○ = #5 REBAR W/ "CARBER" CAP (FOUND)
 ○ = #4 REBAR W/ "CARBER" CAP (FOUND)
 ○ = 1/2" IRON (FOUND)

(M) = MEASURED
 (D) = DESCRIBED
 (P) = PLATTED

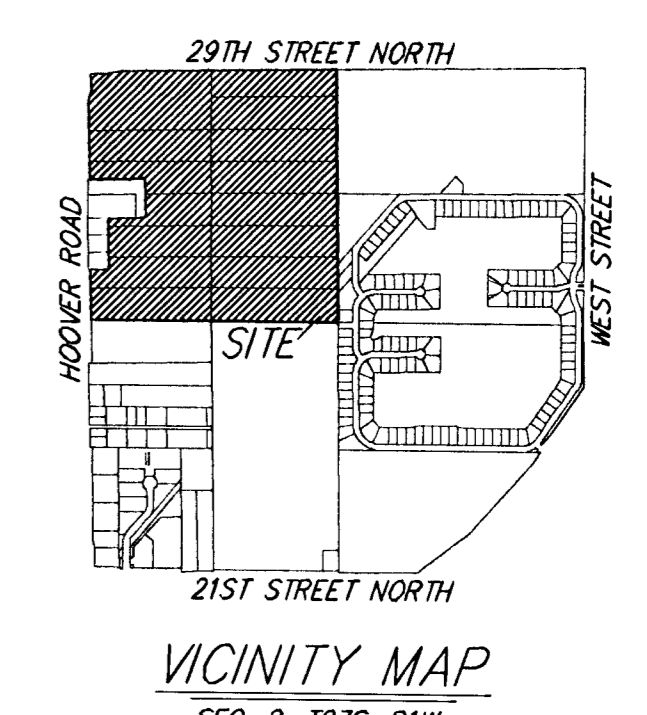
RESERVES "A", "B", "C", AND "D" ARE HEREBY RESERVED FOR OPEN SPACE, LANDSCAPING, DRAINAGE PURPOSES, ENTRY MONUMENTS, UTILITIES, AND STREETS.

RESERVES "E", "F", "G", AND "H" ARE HEREBY RESERVED FOR OPEN SPACE, LANDSCAPING, BERMS, DRAINAGE PURPOSES, ENTRY MONUMENTS, AND UTILITIES AS CONFINED TO EASEMENTS.

RESERVES "I", "J", "K", "L", "M", "N", AND "O" ARE HEREBY RESERVED FOR OPEN SPACE, LANDSCAPING, BERMS, DRAINAGE PURPOSES, AND UTILITIES AS CONFINED TO EASEMENTS.

RESERVE "P" IS HEREBY RESERVED FOR OPEN SPACE, LANDSCAPING, BERMS, DRAINAGE PURPOSES, SWIMMING POOLS AND RELATED APPURTENANCES, PARKING, PLAYGROUND, GAZEBOS, RECREATIONAL AREAS, AND UTILITIES AS CONFINED TO EASEMENTS.

RESERVE "Q" IS HEREBY RESERVED FOR OPEN SPACE, LANDSCAPING, BERMS, LAKES, DRAINAGE PURPOSES, SIDEWALKS, HIKING AND BIKE TRAILS, RECREATIONAL AREAS, GAZEBOS, AND UTILITIES AS CONFINED TO EASEMENTS.



SANDCRESS LAKE
 26 MARCH 2012

Baughman Company, P.A.
 315 Ellis St. Wichita, KS 67211 P 316-262-7171 F 316-262-0149

BAUGHMAN ENGINEERING | SURVEYING | PLANNING | LANDSCAPE ARCHITECTURE

E:\PROJECTS\RUSSELL\29TH&HOOVER\PLAT 12.0216\DWG\RLK