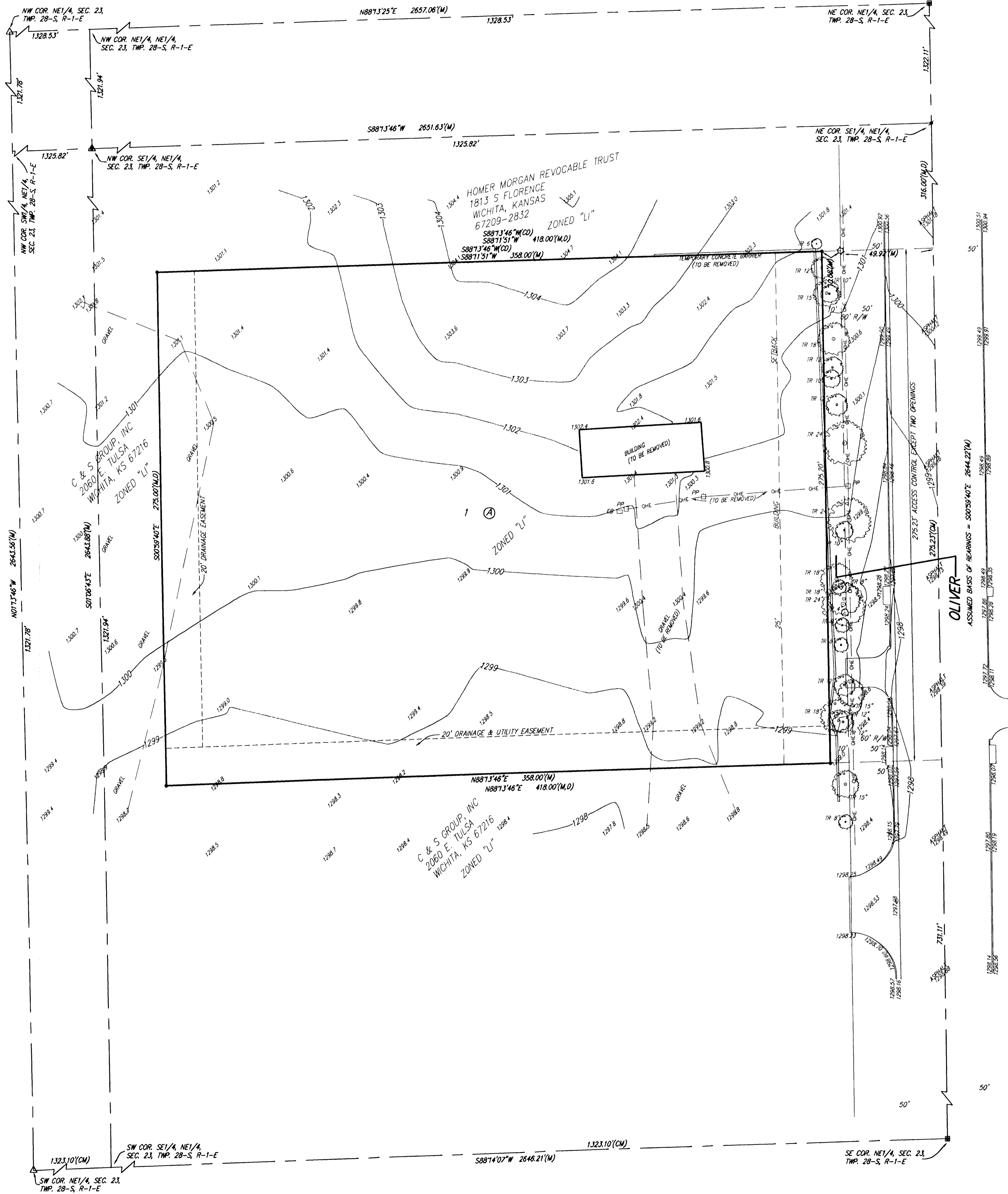


ONE-STEP FINAL PLAT

SEDGWICK COUNTY FIRE STATION NO. 36 ADDITION

SEDGWICK COUNTY, KANSAS



State of Kansas) SS
 Sedgwick County) We, *Baughman Company, P.A.*, Surveyors in
 aforesaid county and state do hereby certify that we have surveyed and
 platted "SEDGWICK COUNTY FIRE STATION NO. 36 ADDITION", Sedgwick
 County, Kansas and that the accompanying plat is a true and correct
 exhibit of the property surveyed, described as commencing at the
 Northeast corner of the Southeast Quarter of the Northeast Quarter of
 Section 23, Township 28 South, Range 1 East of the Sixth Principal
 Meridian, Sedgwick County, Kansas; thence south along the East line of
 the Southeast Quarter of said Northeast Quarter, 316 feet for a point of
 beginning; thence west parallel with the North line of the Southeast
 Quarter of said Northeast Quarter, 418 feet; thence south parallel with the
 East line of the Southeast Quarter of said Northeast Quarter, 275 feet;
 thence east parallel with the north line of the Southeast Quarter of said
 Northeast Quarter, 418 feet to a point on the east line of the Southeast
 Quarter of said Northeast Quarter; thence north 275 feet of to the point
 of beginning, subject to road rights of way of record.

This plat of "SEDGWICK COUNTY FIRE STATION
 NO. 36 ADDITION", Sedgwick County, Kansas has been submitted to and
 approved by the Wichita-Sedgwick County Metropolitan Area Planning
 Commission, Wichita, Kansas.
 Dated this _____ day of _____, 2012.
 Wichita-Sedgwick County Metropolitan Area Planning Commission

_____, Chair
Shawn Farney
 _____, Secretary
John L. Schlegel

Existing public easements and dedications
 being vacated by virtue of K.S.A. 12-512(b).
 _____, Surveyor
Michael G. Conrey

This plat approved and all dedications
 shown hereon accepted by the City Council of the City of Wichita,
 Kansas, this _____ day of _____, 2012.

_____, Mayor
Carl Brewer
 _____, City Clerk
Karen Sublett

Know all men by these presents that we,
 the undersigned, have caused the land in the surveyors certificate to be
 platted into a Lot, a Block, and Streets, to be known as "SEDGWICK
 COUNTY FIRE STATION NO. 36 ADDITION", Sedgwick County, Kansas. The
 drainage and utility easement is hereby granted as indicated for drainage
 purposes and for the construction and maintenance of all public utilities.
 The drainage easement is hereby granted as indicated for drainage
 purposes. The streets are hereby dedicated to and for the use of the
 public. Access controls shall be as depicted on the face of the plat and
 are hereby granted to the appropriate governing body. The permitted
 opening locations shall be as determined by the City Engineer of the City
 of Wichita, Kansas.

This plat approved and all dedications
 shown hereon accepted by the Board of Commissioners of
 Sedgwick County, Kansas, this _____ day of _____, 2012.

_____, Chairman
Tim Norton
 ATTEST: _____, County Clerk
Kelly B. Arnold

Sedgwick County Fire District #1
 _____, Chairman
Dave Unruh

PR&E-ENGINEERING 1-71
 *Julianne Kallman
Fields for the 712112 Subdivision Meeting

State of Kansas) SS
 Sedgwick County) The foregoing instrument acknowledged before
 me, this _____ day of _____, 2012, by *Dave Unruh*, Chairman of
 Sedgwick County Fire District #1, on behalf of Sedgwick County Fire
 District #1.

Reviewed in accordance with K.S.A. 58-2005
 on this _____ day of _____, 2012.

_____, Deputy County Surveyor
Tricia L. Robello, L.S. #1246
 Sedgwick County, Kansas

_____, Notary Public
 My App't. Exp. _____

Entered on transfer record this _____ day
 of _____, 2012.

_____, County Clerk
Kelly B. Arnold

State of Kansas) SS
 Sedgwick County) This is to certify that this plat has been
 filed for record in the office of the Register of Deeds, this _____ day
 of _____, 2012 at _____ o'clock _____ M; and is duly recorded.

_____, Register of Deeds
Bill Meek

_____, Deputy
Tonya Buckingham

SEDGWICK COUNTY FIRE STATION NO. 36 ADDITION

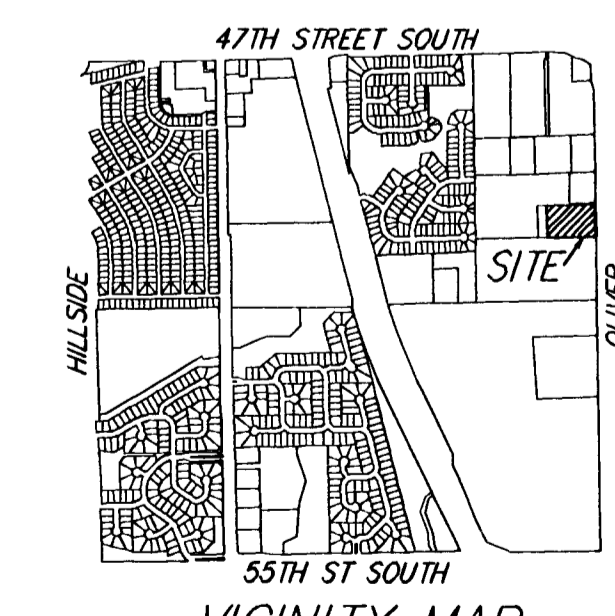
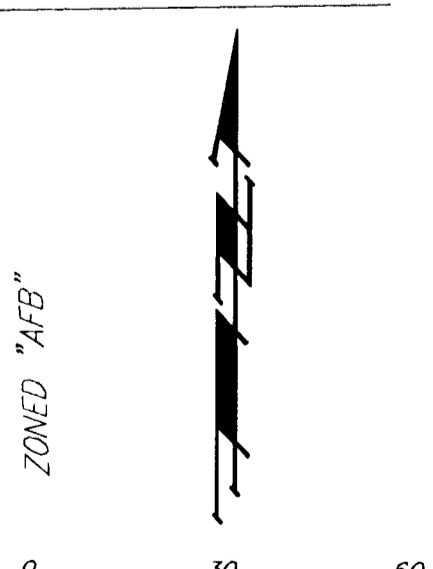
30 JUNE 2012

Baughman Company, P.A.
 315 Ellis St. Wichita, KS 67211 P 316-262-7271 F 316-262-0149
 ENGINEERING | SURVEYING | PLANNING | LANDSCAPE ARCHITECTURE

USA-CORPS OF ENGINEERS
 700 FEDERAL BLDG.
 KANSAS CITY, MO 64106
 ZONED "AFB"

USA-CORPS OF ENGINEERS
 700 FEDERAL BLDG.
 KANSAS CITY, MO 64106
 ZONED "AFB"

USA-CORPS OF ENGINEERS
 700 FEDERAL BLDG.
 KANSAS CITY, MO 64106
 ZONED "AFB"



- VICINITY MAP**
 SEC. 23, T28S, R1E
- #1 REBAR W/ "BAUGHMAN" CAP (FOUND)
 - #1 REBAR W/ "BAUGHMAN" CAP (SET)
 - #5 REBAR W/ "YELLOW" CAP (FOUND)
 - ▲ #4 REBAR W/ "S 1241" CAP (FOUND)
 - △ 3/4" IRON (FOUND)
 - #4 REBAR W/ "TRB" CAP (FOUND)
- (M) = MEASURED
 (D) = DESCRIBED
 (P) = PLATED
 (C) = CALCULATED

NOTE:
 A master grading plan for drainage has been developed for this subdivision
 and is on file with the appropriate governing body. All drainage easements,
 right-of-ways, or reserves shall remain at established grades or as
 modified with the approval of the Engineer of the appropriate governing
 body. No obstructions which impede the flow of this drainage system shall
 be allowed.