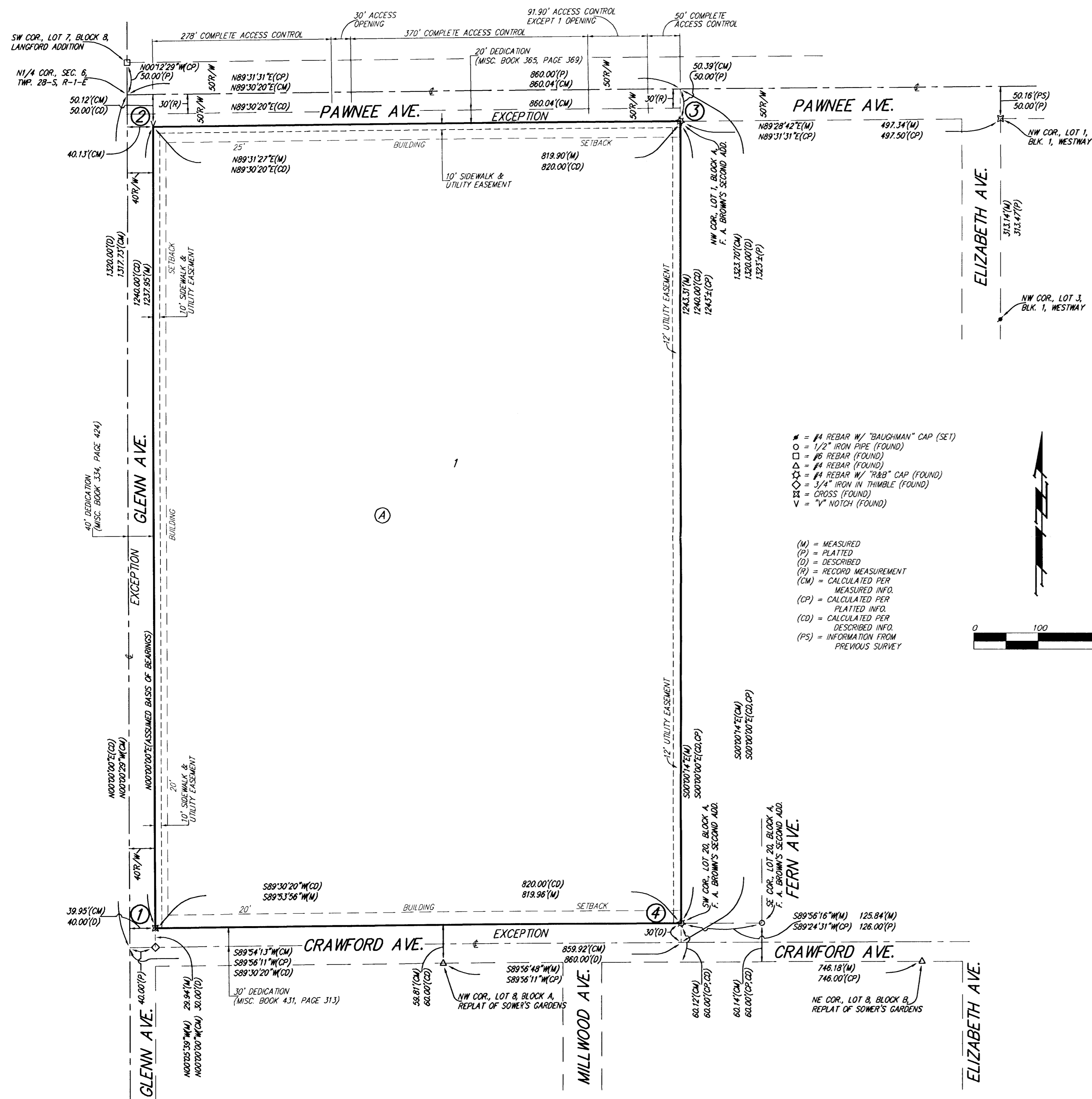


TRUESDELL MIDDLE SCHOOL ADDITION WICHITA, SEDGWICK COUNTY, KANSAS

FINAL TRACING REC'D 8-6-12



State of Kansas) SS We, Baughman Company, P.A., Surveyors in
Sedgwick County) do hereby certify that we have surveyed and
platted "TRUESDELL MIDDLE SCHOOL ADDITION", Wichita, Sedgwick County,
Kansas and that the accompanying plat is a true and correct exhibit of
the property surveyed, described as follows: A tract beginning at the
northwest corner of the Northeast Quarter of Section 6, Township 28
South, Range 1 East of the Sixth Principal Meridian, Sedgwick County,
Kansas; thence south, 660 feet; thence east, 400 feet; thence north, 660
feet; thence west, 400 feet to beginning, EXCEPT the west 40 feet for
street, and EXCEPT the south 20 feet of the north 50 feet for street,
TOGETHER with a tract beginning 400 feet east of the northwest corner
of the Northeast Quarter of Section 6, Township 28 South, Range 1 East
of the Sixth Principal Meridian, Sedgwick County, Kansas; thence east, 460
feet; thence south, 1,320 feet; thence west, 860 feet; thence north, 660
feet; thence east, 400 feet; thence north 660 feet to beginning, EXCEPT
the west 40 feet for street, and EXCEPT the south 20 feet of the north
50 feet for street, and EXCEPT the south 30 feet for street, all being
subject to road rights-of-way of record.

Existing public easements and dedications
being vacated by virtue of K.S.A. 12-512b.
Baughman Company, P.A.

Michael G. Conrey, Surveyor

This plat of "TRUESDELL MIDDLE SCHOOL
ADDITION", Wichita, Sedgwick County, Kansas has been submitted to and
approved by the Wichita-Sedgwick County Metropolitan Area Planning
Commission, Wichita, Kansas.
Dated this _____ day of _____, 2012.
Wichita-Sedgwick County Metropolitan Area Planning Commission

Shawn Farney, Chair

John L. Schlegel, Secretary

This plat approved and all dedications
shown hereon accepted by the City Council of the City of Wichita,
Kansas, this _____ day of _____, 2012.

Carl Brewer, Mayor

Karen Sublett, City Clerk

Reviewed in accordance with K.S.A. 58-2005
on this _____ day of _____, 2012.

Know all men by these presents that we,
the undersigned, have caused the land in the surveyors certificate to be
platted into a Lot and a Block, to be known as "TRUESDELL MIDDLE
SCHOOL ADDITION", Wichita, Sedgwick County, Kansas. The utility
easement is hereby granted as indicated for the construction and
maintenance of all public utilities. The sidewalk and utility easements are
hereby granted as indicated for the construction and maintenance of
public sidewalks and for the construction and maintenance of all public
utilities. Access controls shall be as depicted on the face of the plat
and are hereby granted to the City of Wichita, Kansas. The permitted
opening locations shall be as determined by the City Engineer of the City
of Wichita, Kansas.

Unified School District No. 259,
Wichita, Sedgwick County, Kansas

Connie Dietz, President

Entered on transfer record this _____ day
of _____, 2012.

Kelly B. Arnold, County Clerk

State of Kansas) SS The foregoing instrument acknowledged before
Sedgwick County) me, this _____ day of _____, 2012, by Connie Dietz, President of
the Unified School District No. 259, Wichita, Sedgwick County, Kansas, on
behalf of the unified school district.

My App't. Exp. _____, Notary Public

State of Kansas) SS This is to certify that this plat has been
Sedgwick County) filed for record in the office of the Register of Deeds, this _____ day
of _____, 2012 at _____ o'clock _____ M; and is duly recorded.

Bill Meek, Register of Deeds

Tonya Buckingham, Deputy

NOTE:
A drainage plan has been developed for this subdivision and is on file with
the City of Wichita, Kansas. Drainage intent shall remain as depicted or as
modified with the approval of the City Engineer of the City of Wichita,
Kansas. No obstructions which impede the flow of this drainage plan shall
be allowed.

Baughman Company, P.A.
315 Ellis St. Wichita, KS 67211 P 316-262-7271 F 316-262-0149
Baughman ENGINEERING | SURVEYING | PLANNING | LANDSCAPE ARCHITECTURE