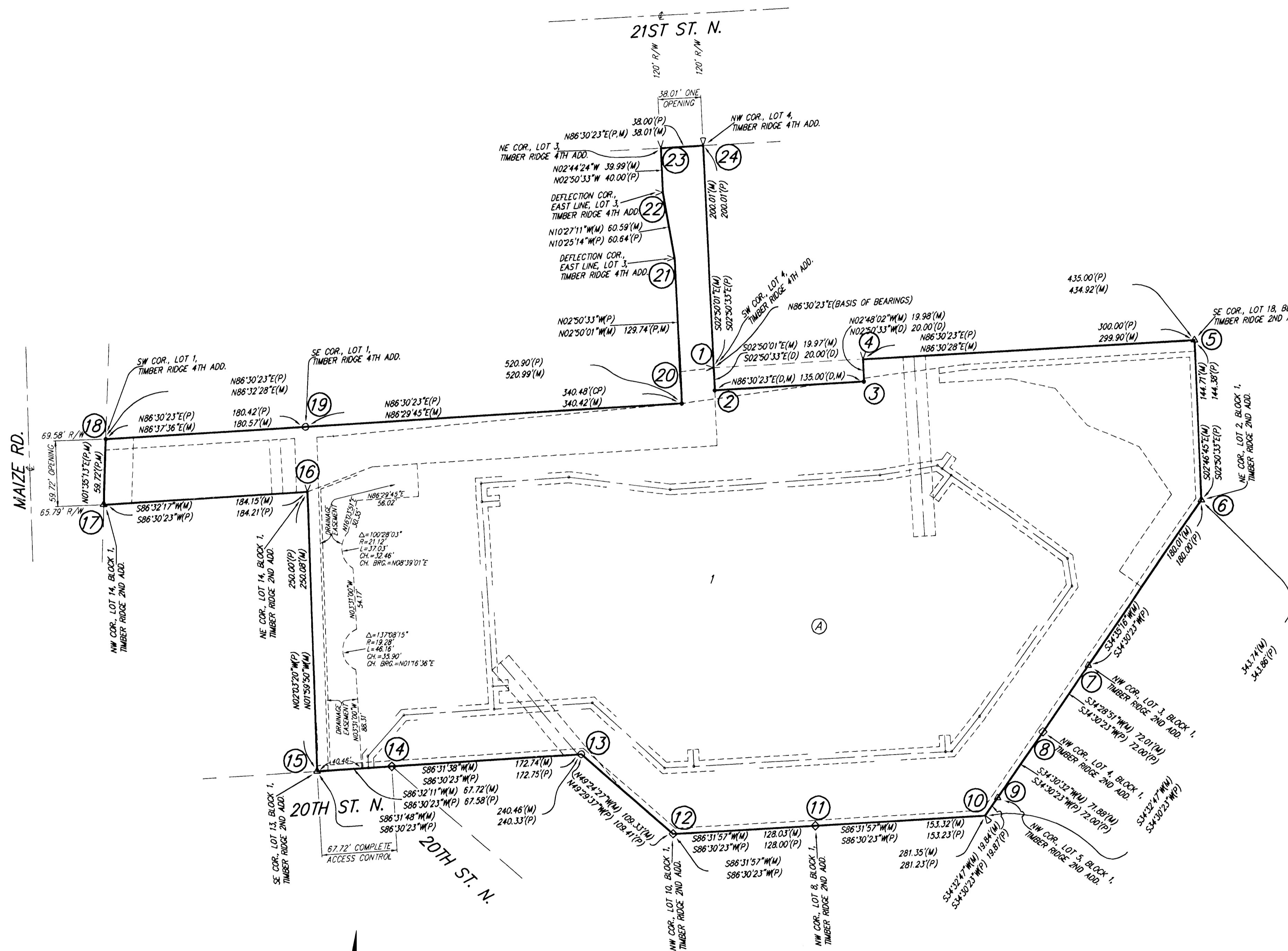


TIMBER RIDGE 5TH ADDITION

WICHITA, SEDGWICK COUNTY, KANSAS

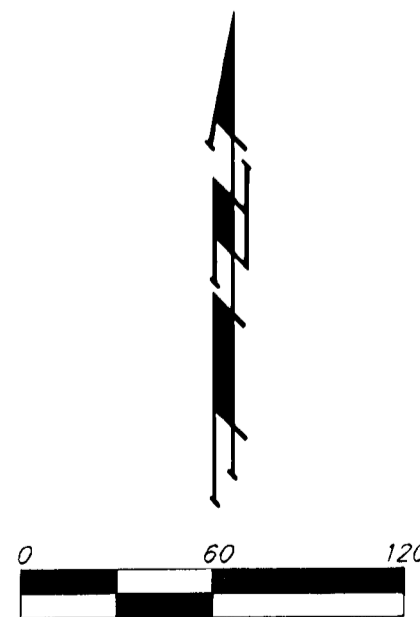
PW & U - ENGINEERING 1-71
 Kim Pelton
 FOR YOUR FILES

FINAL TRACING REC'D 8-17-12



- = #4 REBAR W/ "BAUGHMAN" CAP (SET)
- △ = #4 REBAR W/ "BAUGHMAN" CAP (FOUND)
- = #4 REBAR (FOUND)
- ◇ = #4 REBAR W/ "SRB" CAP (FOUND)
- ▽ = "V" NOTCH (FOUND)
- ▽ = "V" NOTCH (SET)

(M) = MEASURED
 (P) = PLATTED
 (D) = DESCRIBED
 (CP) = CALCULATED PER PLATTED INFO



NOTE:
 A drainage plan has been developed for this subdivision and is on file with the City of Wichita, Kansas. Drainage intent shall remain as depicted or as modified with the approval of the City Engineer of the City of Wichita, Kansas. No obstructions which impede the flow of this drainage plan shall be allowed.

NOTE:
 ADDITIONAL BUILDING SETBACK REQUIREMENTS AND RESTRICTIONS PER COMMUNITY UNIT PLAN DP-197.

State of Kansas) SS We, Baughman Company, P.A., Surveyors in Sedgwick County and state do hereby certify that we have surveyed and platted "TIMBER RIDGE 5TH ADDITION", Wichita, Sedgwick County, Kansas and that the accompanying plat is a true and correct exhibit of the property surveyed, described as and being a replat of Lot 5, Timber Ridge 4th Addition, Wichita, Sedgwick County, Kansas, EXCEPT that part described as beginning at the southwest corner of Lot 4 in said Timber Ridge 4th Addition; thence N86°30'23"E along the south line of said Lot 4, 135.00 feet to the southeast corner of said Lot 4; thence S02°50'33"E along the extended east line of said Lot 4, 20.00 feet; thence S86°30'23"W, 135.00 feet to an intersection with the extended west line of said Lot 4; thence N02°50'33"W, 20.00 feet to the point of beginning.

All being situated in the Northwest Quarter of Section 8, Township 27 South, Range 1 West of the Sixth Principal Meridian, Sedgwick County, Kansas

Existing public easements and dedications being vacated by virtue of K.S.A. 12-512b.

Baughman Company, P.A.

This plat of "TIMBER RIDGE 5TH ADDITION", Wichita, Sedgwick County, Kansas has been submitted to and approved by the Wichita-Sedgwick County Metropolitan Area Planning Commission, Wichita, Kansas.

Dated this _____ day of _____, 2012.

Wichita-Sedgwick County Metropolitan Area Planning Commission

_____, Chair
 Shawn Farney

_____, Secretary
 John L. Schlegel

_____, Surveyor
 Michael G. Conrey

_____, Mayor
 Carl Brewer

_____, City Clerk
 Karen Sublett

Know all men by these presents that we, the undersigned, have caused the land in the surveyors certificate to be platted into a Lot and a Block, to be known as "TIMBER RIDGE 5TH ADDITION", Wichita, Sedgwick County, Kansas. The utility easements are hereby granted as indicated for the construction and maintenance of all public waterlines and related appurtenances. The drainage and utility easements are hereby granted as indicated for drainage purposes and for the construction and maintenance of all public utilities. The drainage easements are hereby granted as indicated for drainage purposes. The wall easements are hereby granted as indicated for the construction and maintenance of private screening walls and private retaining walls and utility main lines and service lines shall be allowed to cross these easements. Access controls shall be as depicted on the face of the plat and are hereby granted to the City of Wichita, Kansas. The permitted opening locations shall be as determined by the City Engineer of the City of Wichita, Kansas.

Reviewed in accordance with K.S.A. 58-2005 on this _____ day of _____, 2012.

Bennington Place, LLC,
 a Kansas limited liability company

_____, Member
 Michael J. Brand

Tricia L. Robello, L.S. #1246
 Deputy County Surveyor
 Sedgwick County, Kansas

State of Kansas) SS The foregoing instrument acknowledged before me, this _____ day of _____, 2012, by Michael J. Brand, Member of the Bennington Place, LLC, a Kansas limited liability company, on behalf of the limited liability company.

Entered on transfer record this _____ day of _____, 2012.

_____, Notary Public

My App't. Exp. _____

_____, County Clerk
 Kelly B. Arnold

We, the undersigned holders of a mortgage on the above described property, do hereby consent to this plat of "TIMBER RIDGE 5TH ADDITION", Wichita, Sedgwick County, Kansas.

INTRUST Bank, N.A.

State of Kansas) SS This is to certify that this plat has been filed for record in the office of the Register of Deeds, this _____ day of _____, 2012 at _____ o'clock _____ M; and is duly recorded.

State of Kansas) SS The foregoing instrument acknowledged before me, this _____ day of _____, 2012, by _____ of INTRUST Bank, N.A., on behalf of the bank.

_____, Register of Deeds
 Bill Meek

_____, Deputy
 Tonya Buckingham

_____, Notary Public

My App't. Exp. _____

Baughman Company, P.A.
 315 Ellis St. Wichita, KS 67211 P 316-262-1271 F 316-262-0149
 Baughman ENGINEERING | SURVEYING | PLANNING | LANDSCAPE ARCHITECTURE