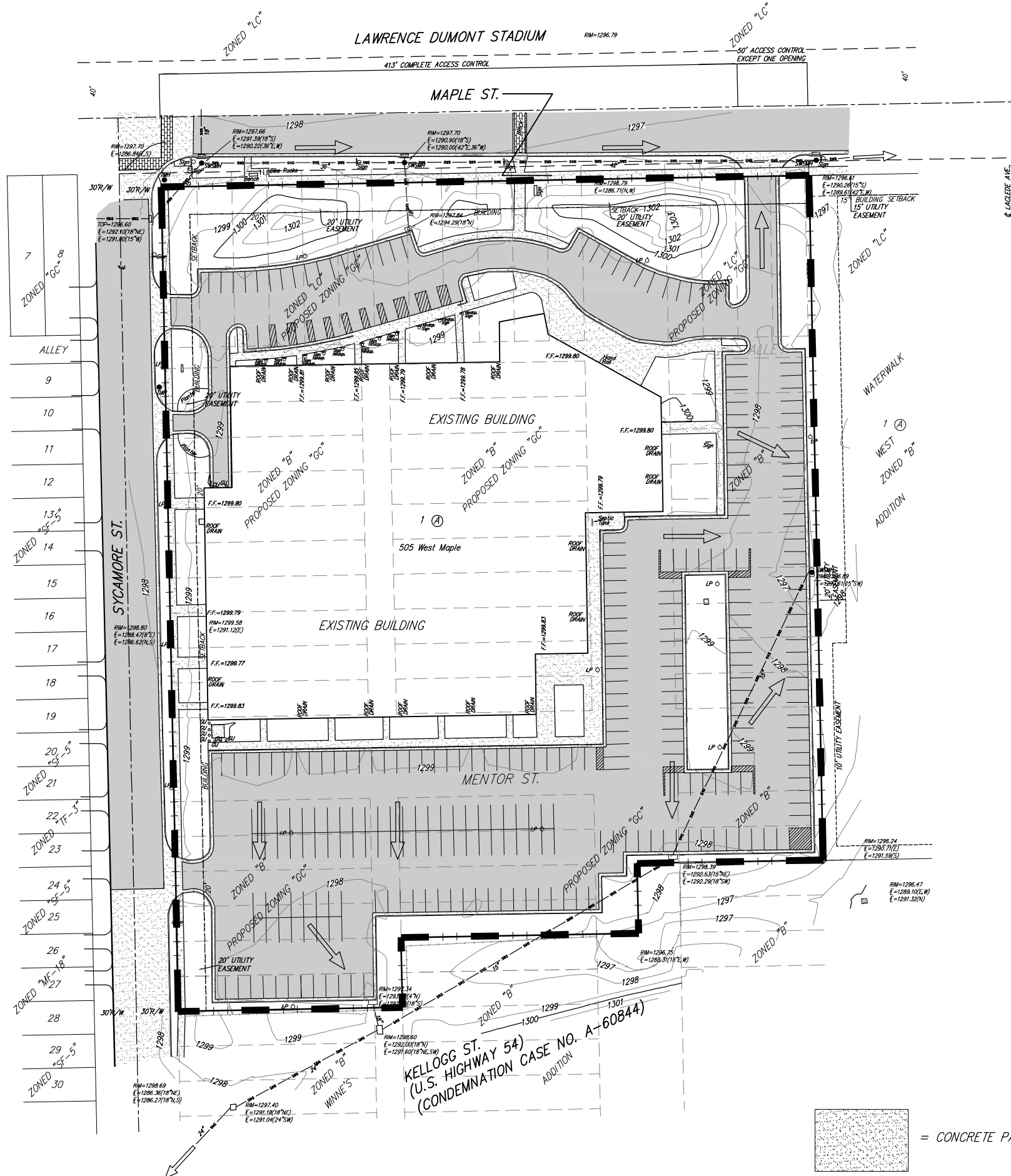


DRAINAGE PLAN

WICHITA ICE CENTER

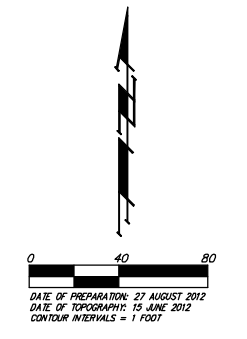
WICHITA, SEDGWICK COUNTY, KANSAS



EXISTING = DEVELOPED
DA = 5.8 acres
C' = 0.93
Tc = 15 min
Q 2 = 21 cfs
Q 5 = 25 cfs
Q 10 = 28 cfs
Q 100 = 40 cfs

Current Site
200,650 ft ² Impervious Area
51,000 ft ² Pervious Area

LEGEND	
	Existing SWS
	Drainage Basin Boundary
	Proposed Flow Direction



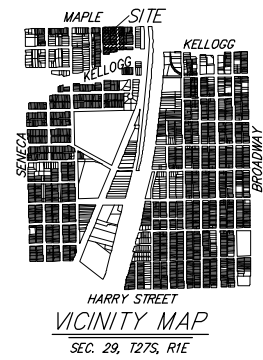
OWNER
City of Wichita, Kansas
Attn: John Philbrick
455 N. Main St.
Wichita, Kansas 67202
Ph. (316) 268-4436

BENCHMARK
Cross cut inside square cut on top of curb, East side of ice center drive entrance, 21' S. & 21.3' W. of the northwest corner of Lot 1, Block A, Waterwalk West Addition. Elev. = 1297.73 NAVD88

Chiseled square on Kellogg R/W fence facing 1.8' S. of the SW corner of Lot 11, SHW's 1st Sub. Elev. = 1296.14 NAVD88

- = #4 REBAR W/ "BAUGHMAN" CAP (SET)
- = #7 REBAR (FOUND)
- = 3/4" IRON PIPE IN THIMBLE (FOUND)
- = 1-1/4" IRON PIPE IN THIMBLE (FOUND)

- (M) = MEASURED
- (P) = PLATTED
- (CP) = CALCULATED PER PLATTED INFO.
- (CM) = CALCULATED PER MEASURED INFO.
- (CD) = CALCULATED PER DESCRIBED INFO.



NOTES: This area lies within a FEMA SFHA Zone X-Shaded (500-year or protected by a levee) as of this date per FEMA FIRM Panel 365 of 700, for Wichita, Sedgwick County, Kansas; effective February 2, 2007.

The internal Storm Water Sewer, and that which is located in Maple Street, is existing.

No additional impervious area is expected with this site at this time. Everything depicted on this plan is existing conditions.

