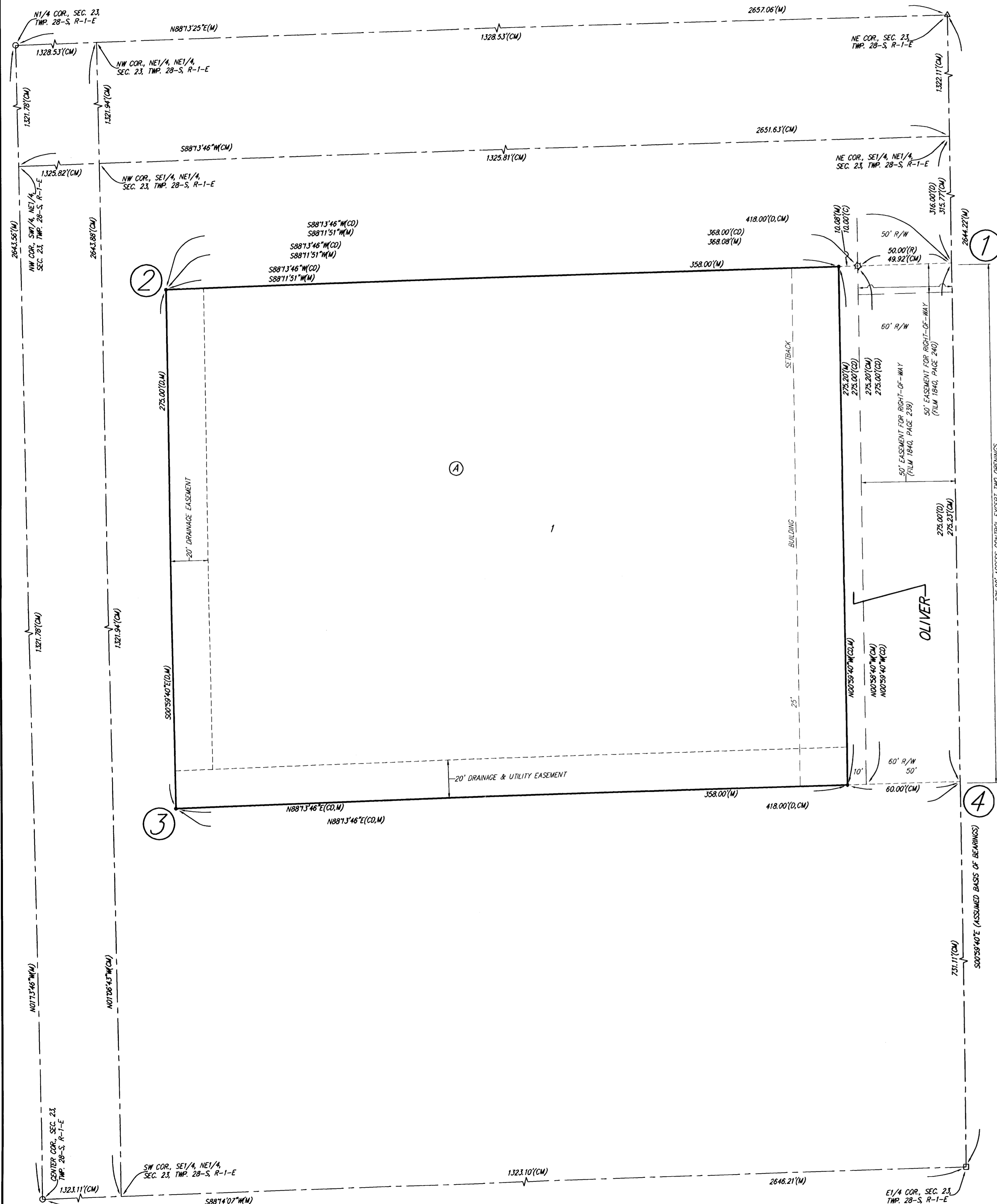


SEDGWICK COUNTY FIRE STATION NO. 36 ADDITION

SEDGWICK COUNTY, KANSAS



State of Kansas) SS We, *Baughman Company, P.A.*, Surveyors in Sedgwick County do hereby certify that we have surveyed and platted "SEDGWICK COUNTY FIRE STATION NO. 36 ADDITION", Sedgwick County, Kansas and that the accompanying plat is a true and correct exhibit of the property surveyed, described as commencing at the Northeast corner of the Southeast Quarter of the Northeast Quarter of Section 23, Township 28 South, Range 1 East of the Sixth Principal Meridian, Sedgwick County, Kansas; thence south along the East line of the Southeast Quarter of said Northeast Quarter, 316 feet for a point of beginning; thence west parallel with the North line of the Southeast Quarter of said Northeast Quarter, 418 feet; thence south parallel with the East line of the Southeast Quarter of said Northeast Quarter, 275 feet; thence east parallel with the north line of the Southeast Quarter of said Northeast Quarter, 418 feet to a point on the east line of the Southeast Quarter of said Northeast Quarter; thence north 275 feet of to the point of beginning, subject to road rights-of-way of record.

Existing public easements and dedications being vacated by virtue of K.S.A. 12-512b.

Baughman Company, P.A.

_____, Surveyor
 Michael G. Conrey

Know all men by these presents that we, the undersigned, have caused the land in the surveyor's certificate to be platted into a Lot, a Block, and a Street, to be known as "SEDGWICK COUNTY FIRE STATION NO. 36 ADDITION", Sedgwick County, Kansas. The drainage and utility easement is hereby granted as indicated for drainage purposes and for the construction and maintenance of all public utilities. The drainage easement is hereby granted as indicated for drainage purposes. The street is hereby dedicated to and for the use of the public. Access controls shall be as depicted on the face of the plat and are hereby granted to the appropriate governing body. The permitted opening locations shall be as determined by the Engineer for the appropriate governing body.

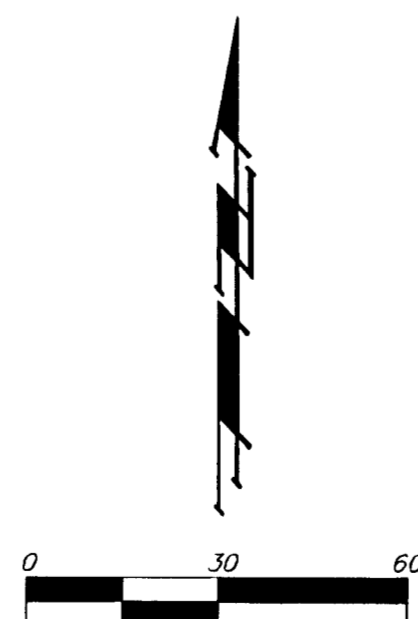
Sedgwick County Fire District Number One, a Kansas political subdivision

_____, Chairman
 Tim R. Norton, Second District

State of Kansas) SS The foregoing instrument acknowledged before me, this _____ day of _____, 2012, by Tim R. Norton, Second District, Chairman of Sedgwick County Fire District Number One, a Kansas political subdivision, on behalf of the political subdivision.

_____, Notary Public

My App't. Exp. _____



- = #4 REBAR W/ "BAUGHMAN" CAP (SET)
- = #5 REBAR W/ ILLEGIBLE YELLOW CAP (FOUND)
- △ = 3/4" IRON (FOUND)
- = #4 REBAR W/ "TRB" CAP (FOUND)
- = 1/2" IRON PIPE (FOUND)

- (M) = MEASURED
- (D) = DESCRIBED
- (C) = CALCULATED
- (R) = RECORD MEASUREMENT
- (CM) = CALCULATED PIER
- (M) = MEASURED INFO
- (CD) = CALCULATED PIER DESCRIBED INFO

NOTE:
 A master grading plan for drainage has been developed for this subdivision and is on file with the appropriate governing body. All drainage easements, right-of-ways, or reserves shall remain at established grades or as modified with the approval of the Engineer of the appropriate governing body. No obstructions which impede the flow of this drainage system shall be allowed.

This plat of "SEDGWICK COUNTY FIRE STATION NO. 36 ADDITION", Sedgwick County, Kansas has been submitted to and approved by the Wichita-Sedgwick County Metropolitan Area Planning Commission, Wichita, Kansas.
 Dated this _____ day of _____, 2012.
 Wichita-Sedgwick County Metropolitan Area Planning Commission

_____, Chair
 Shawn Farney

_____, Secretary
 John L. Schlegel

This plat approved and all dedications shown hereon accepted by the City Council of the City of Wichita, Kansas, this _____ day of _____, 2012.

_____, Mayor
 Carl Brewer

_____, City Clerk
 Karen Sublett

This plat approved and all dedications shown hereon accepted by the Board of Commissioners of Sedgwick County, Kansas, this _____ day of _____, 2012.

_____, Chairman
 Tim R. Norton, Second District

ATTEST: _____, County Clerk
 Kelly B. Arnold

Reviewed in accordance with K.S.A. 58-2005 on this _____ day of _____, 2012.

_____, Deputy County Surveyor
 Tricia L. Robello, L.S. #1246
 Sedgwick County, Kansas

Entered on transfer record this _____ day of _____, 2012.

_____, County Clerk
 Kelly B. Arnold

State of Kansas) SS This is to certify that this plat has been filed for record in the office of the Register of Deeds, this _____ day of _____, 2012 at _____ o'clock _____ M, and is duly recorded.

_____, Register of Deeds
 Bill Meek

_____, Deputy
 Tonya Buckingham