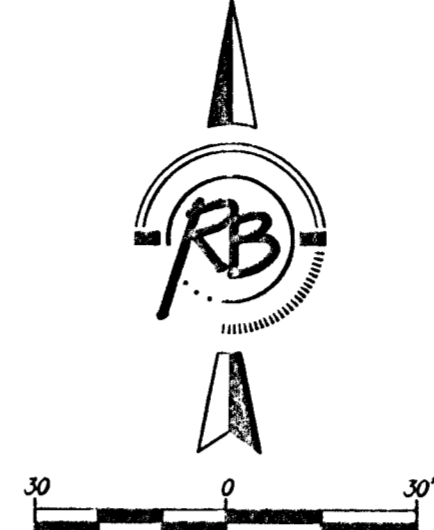
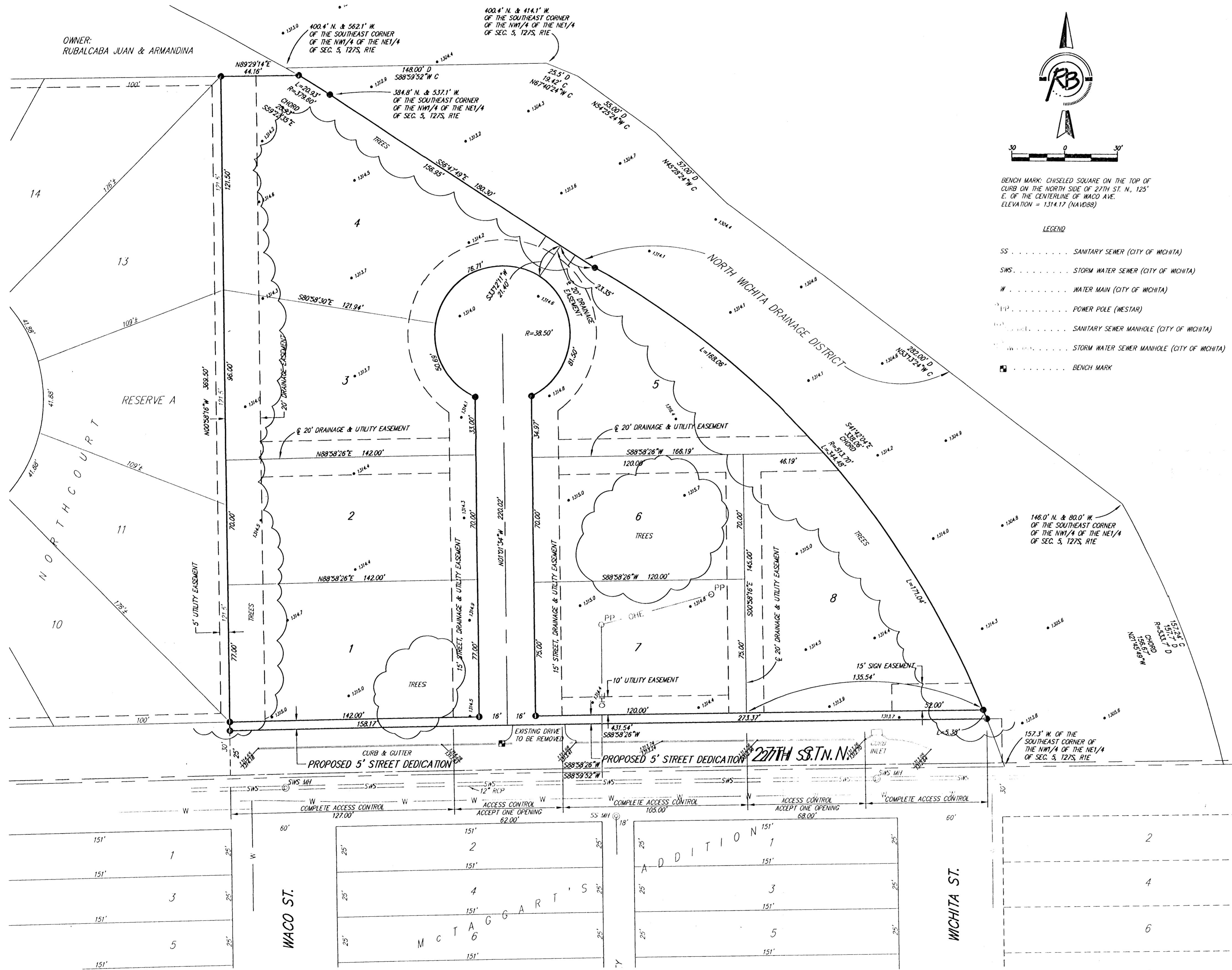


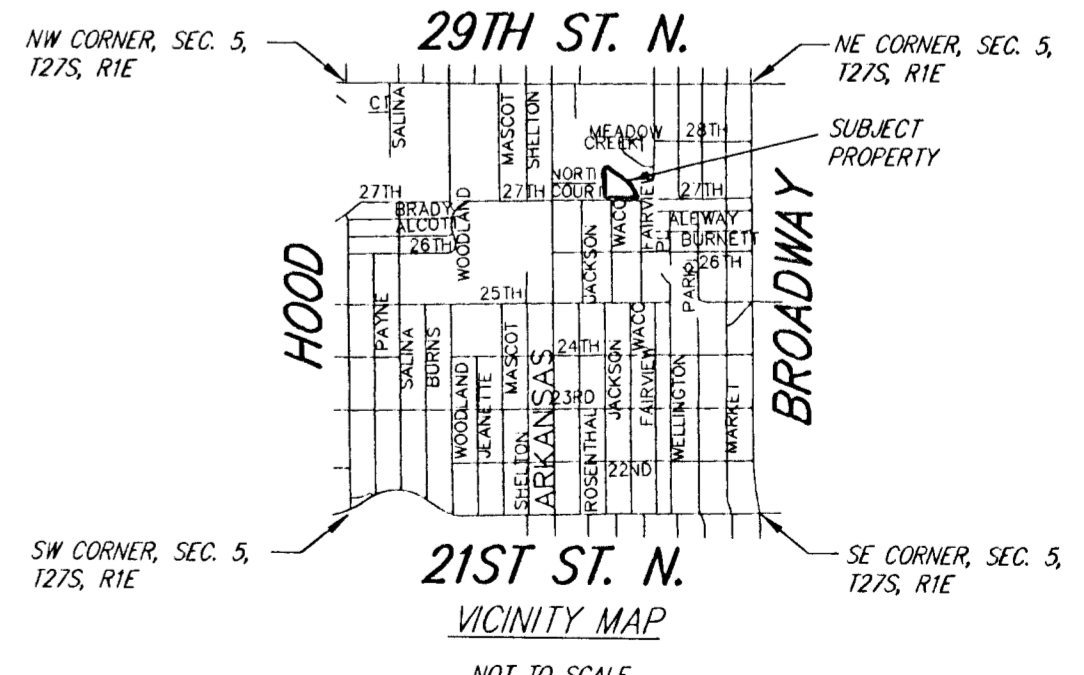
# Preliminary Plat HABITAT HILLS

an Addition to Wichita, Sedgwick County, Kansas



BENCH MARK: CHISELED SQUARE ON THE TOP OF CURB ON THE NORTH SIDE OF 27TH ST. N., 125' E. OF THE CENTERLINE OF WACO AVE.  
ELEVATION = 1314.17 (NAVD83)

- LEGEND**
- SS . . . . . SANITARY SEWER (CITY OF WICHITA)
  - SWS . . . . . STORM WATER SEWER (CITY OF WICHITA)
  - W . . . . . WATER MAIN (CITY OF WICHITA)
  - PIP . . . . . POWER POLE (WESTAR)
  - SMH . . . . . SANITARY SEWER MANHOLE (CITY OF WICHITA)
  - SWMH . . . . . STORM WATER SEWER MANHOLE (CITY OF WICHITA)
  - . . . . . BENCH MARK



**Ruggles & Bohm, P.A.**  
Engineering, Surveying, Land Planning

924 North Main (316) 264-8008  
Wichita, Kansas 67203 (316) 264-4621 fax  
www.rbkansas.com E-mail: info@rbkansas.com

DWG FILE: SURVEY BASE  
PROJECT NO. 3995P  
OCTOBER 19, 2012

# HABITAT HILLS

an Addition to Wichita, Sedgwick County, Kansas

State of Kansas)  
SS  
Sedgwick County)

We, Ruggles & Bohm, P.A., Land Surveyors in aforesaid county and state, do hereby certify that, under the supervision of the undersigned, we have surveyed and platted "HABITAT HILLS", an Addition to Wichita, Sedgwick County, Kansas, and that the accompanying plat is a true and correct exhibit of the property surveyed, described as follows:

Beginning 1320 feet north of the southeast corner of the W1/2 of the NE1/4 of Sec. 5, T27S, R1E of the 6th P.M., Sedgwick County, Kansas; thence West, parallel with the south line of said quarter section, 599 feet to a point 730 feet east of the west line of said W1/2; thence 394-1/2 feet north to a point 730 feet east and 1066.3 feet south of the northwest corner of the W1/2 of the NE1/4 aforesaid; thence East, parallel with the north line of said quarter section, 180 feet to the center of Chisholm Creek; thence southeasterly along the center of said creek to the east line of said W1/2; thence South, 83.2 feet to the place of beginning, except that part condemned by North Wichita Drainage District, Sedgwick County, Kansas.

All public easements and dedications are hereby vacated by virtue of K.S.A. 12-512b.

Ruggles & Bohm, P.A.

\_\_\_\_\_  
William K. Clevenger Land Surveyor

This plat of "HABITAT HILLS", an Addition to Wichita, Sedgwick County, Kansas, has been submitted to and approved by the Wichita-Sedgwick County Metropolitan Area Planning Commission, Wichita, Kansas.

Dated this \_\_\_\_ day of \_\_\_\_\_, 2012.

Wichita-Sedgwick County Metropolitan Area Planning Commission

\_\_\_\_\_  
David Dennis Chair

\_\_\_\_\_  
John L. Schlegel Secretary

This plat approved and all dedications shown hereon accepted by the City Council of the City of Wichita, Kansas, this \_\_\_\_ day of \_\_\_\_\_, 2012.

At the Direction of the City Council

\_\_\_\_\_  
Carl Brewer Mayor

\_\_\_\_\_  
Karen Sublett City Clerk

Reviewed in accordance with K.S.A. 58-2005 on this \_\_\_\_ day of \_\_\_\_\_, 2012.

\_\_\_\_\_  
Tricia L. Robello, LS #1246 Deputy County Surveyor  
Sedgwick County Kansas

Entered on transfer record this \_\_\_\_ day of \_\_\_\_\_, 2012.

\_\_\_\_\_  
Kelly B. Arnold County Clerk

State of Kansas)  
SS  
Sedgwick County)

This is to certify that this plat has been filed for record in the office of the Register of Deeds, this \_\_\_\_ day of \_\_\_\_\_, 2012, at \_\_\_\_ o'clock \_\_ M., and is duly recorded.

\_\_\_\_\_  
Bill Meek Register of Deeds

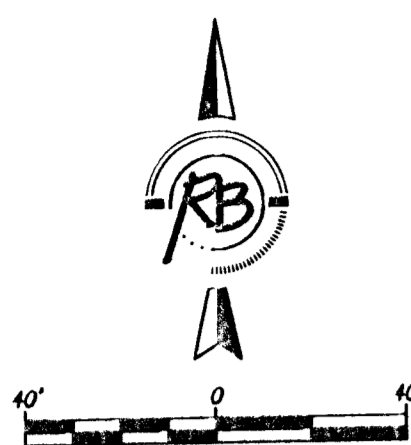
\_\_\_\_\_  
Tonya Buckingham Deputy

State of Kansas)  
SS  
Sedgwick County)

The foregoing instrument acknowledged before me, this \_\_\_\_ day of \_\_\_\_\_, 2012, by Laurie Walker, Operations Director, on behalf of Wichita Habitat for Humanity.

\_\_\_\_\_  
Notary Public

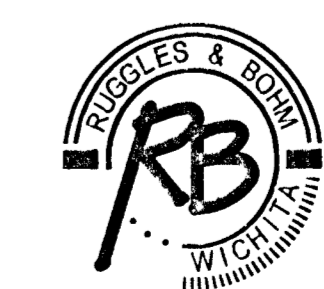
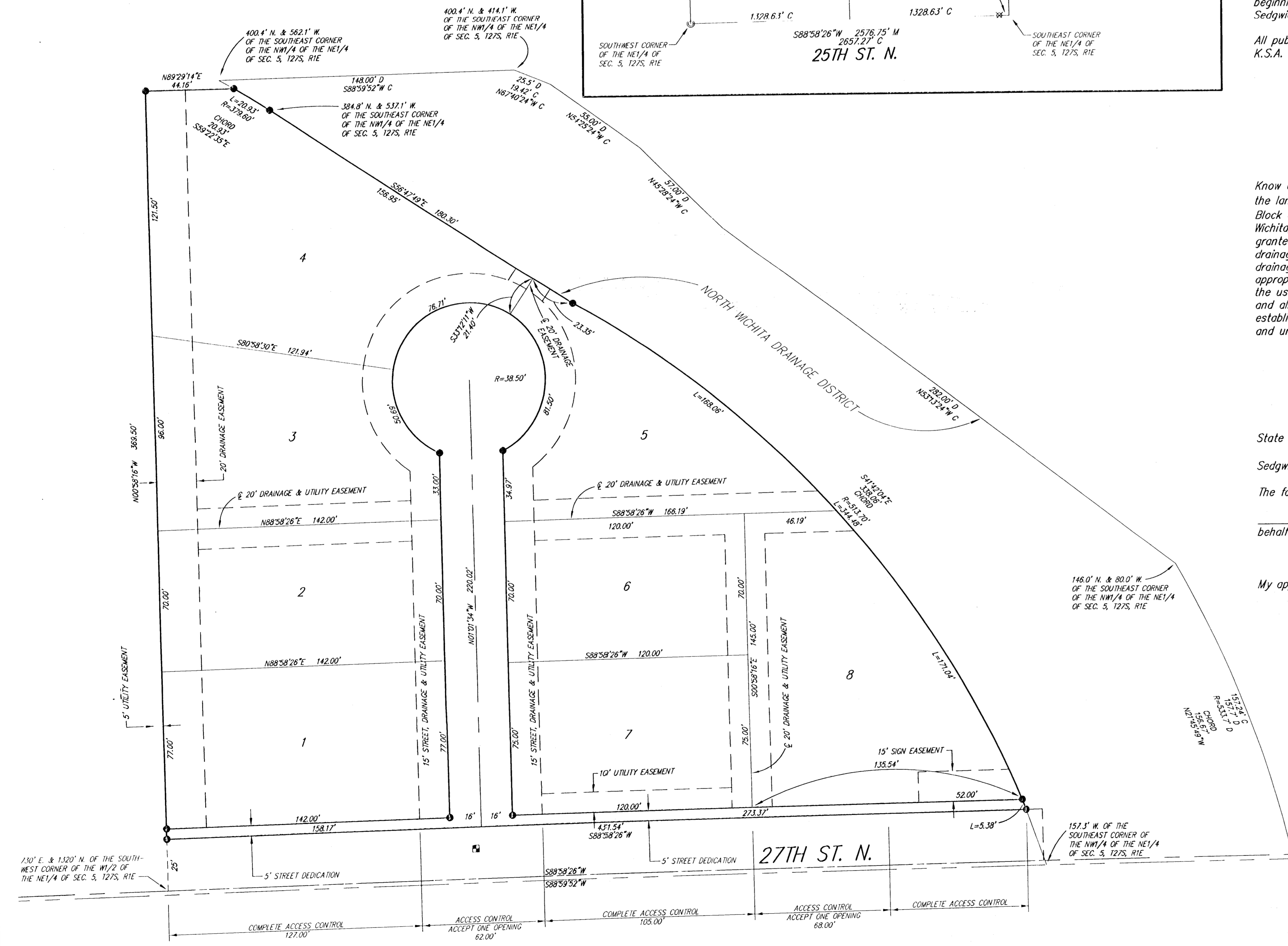
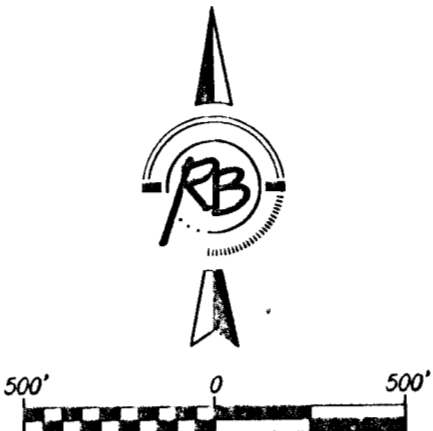
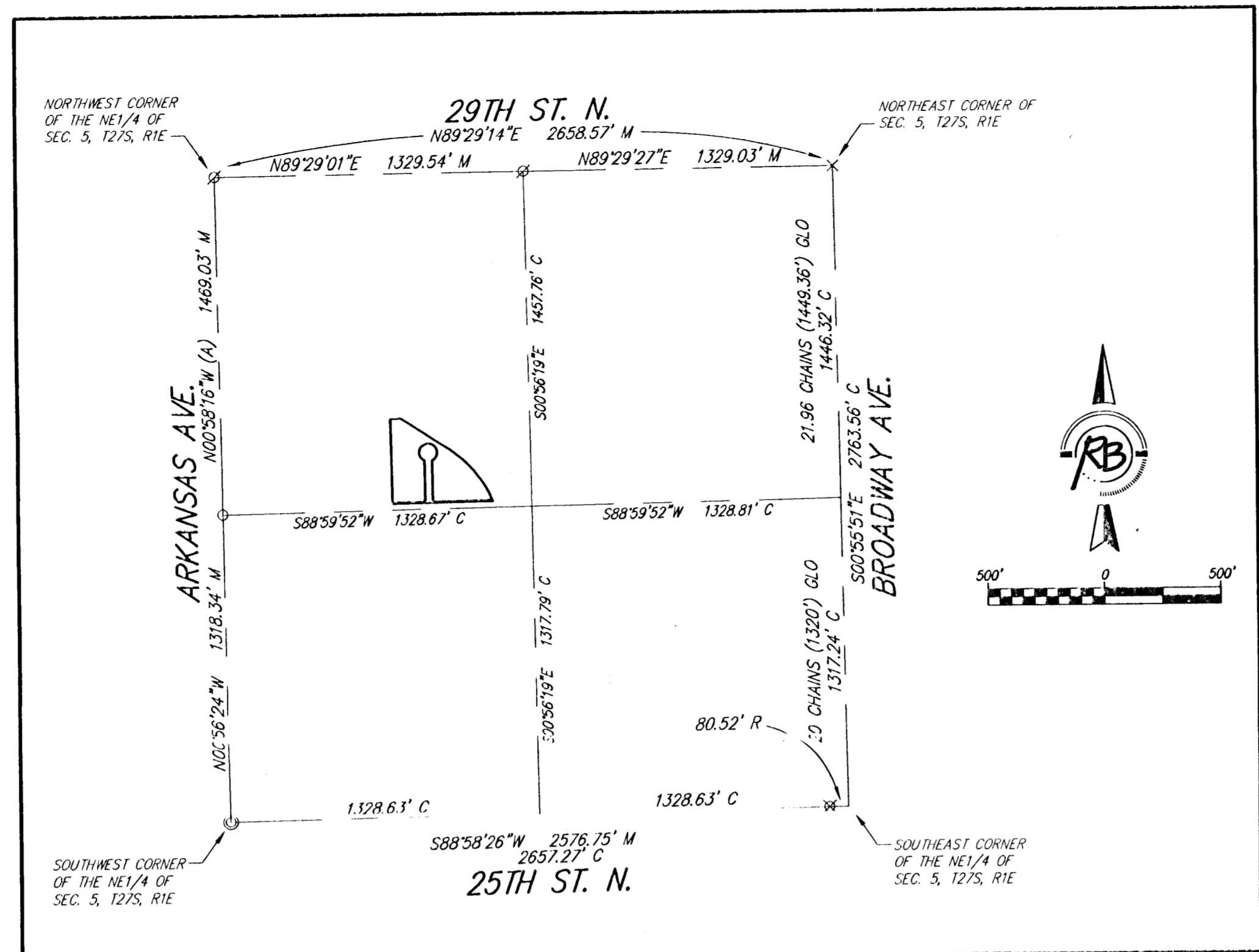
My appointment expires \_\_\_\_\_.



(A) = Assumed Kansas Zone South Grid Bearing  
M = Measured  
C = Calculated  
D = Unobserved  
GLO = Government Land Office Record

**SURVEY MARKER LEGEND**

- X ..... CHISELED CROSS (FOUND - ORIGIN UNKNOWN)
- ..... 3/8" REBAR IN THIMBLE (FOUND - ORIGIN UNKNOWN)
- ..... 3/4" IRON PIPE IN THIMBLE (FOUND - ORIGIN UNKNOWN)
- ⊗ ..... 1" IRON PIPE IN THIMBLE (FOUND - ORIGIN UNKNOWN)
- ⊙ ..... 1/2" REBAR (FOUND - ORIGIN UNKNOWN)
- ..... 5/8" REBAR W/ RUCOLES & BOHM CAP (SET)
- ..... BENCH MARK



**Ruggles & Bohm, P.A.**  
Engineering, Surveying, Land Planning  
924 North Main (316) 264-8008  
Wichita, Kansas 67203 (316) 264-4621 fax  
www.rbkansas.com E-mail: info@rbkansas.com

DWG FILE: SURVEY BASE  
PROJECT NO. 3395P  
OCTOBER 19, 2012