

One-Step Final Plat Black Traditional Magnet Addition Wichita, Sedgwick County, Kansas

Part of the NW 1/4, Section 13, Township 27 South, Range 1 West of the 6th. P.M.

State of Kansas)
County of Sedgwick) SS

State of Kansas)
City of Wichita) SS

I, Bradley C. Ward, a licensed land surveyor of the State of Kansas, do hereby certify that the following described tract of land was surveyed on the 26th day of September, 2012 and the accompanying final plat prepared and that all the monuments shown herein actually exist and their positions are correctly shown to the best of my knowledge and belief.

This plat of Black Traditional Magnet Addition, Wichita, Sedgwick County, Kansas, has been submitted to and approved by the Wichita-Sedgwick County Metropolitan Area Planning Commission, Wichita, Kansas, dated this _____ day of _____, 2012.
Wichita-Sedgwick County Metropolitan Area Planning Commission.

LEGAL DESCRIPTION

Beginning 990 feet West of the Southeast corner of the Northwest 1/4; thence North 695 feet; thence West 400 feet; thence South 660 feet; thence East 57.25 feet; thence South .35 feet; thence East 342.7 feet, to the Beginning; and the 15 foot Vacation of Del Sienna, on the North, of Section 13, Township 27 South, Range 1 West, of the Sixth Principal Meridian, Sedgwick County, Kansas.

All easements and Rights of Way within said tract are hereby vacated by virtue of KSA 12-512b amended.

David Dennis, Chair

John L. Schlegel, Secretary

State of Kansas)
City of Wichita) SS

This plat approved and all dedications shown hereon accepted by the City Council of the City of Wichita, Kansas, this _____ day of _____, 2012.

At the Direction of the City Council

Carl Brewer, Mayor

Karen Sublett, City Clerk

Entered on transfer record this _____ day of _____, 2012.

Kelly B. Arnold, County Clerk

State of Kansas)
County of Sedgwick) SS

This is to certify that this plat has been filed for record in the Office of the Register of Deeds this _____ day of _____, 2012, at _____ o'clock _____ M; and is duly recorded.

Bill Meek, Register of Deeds

Tonya Buckingham, Deputy

Reviewed in accordance with K.S.A. 58-2005 on this _____ day of _____, 2012.

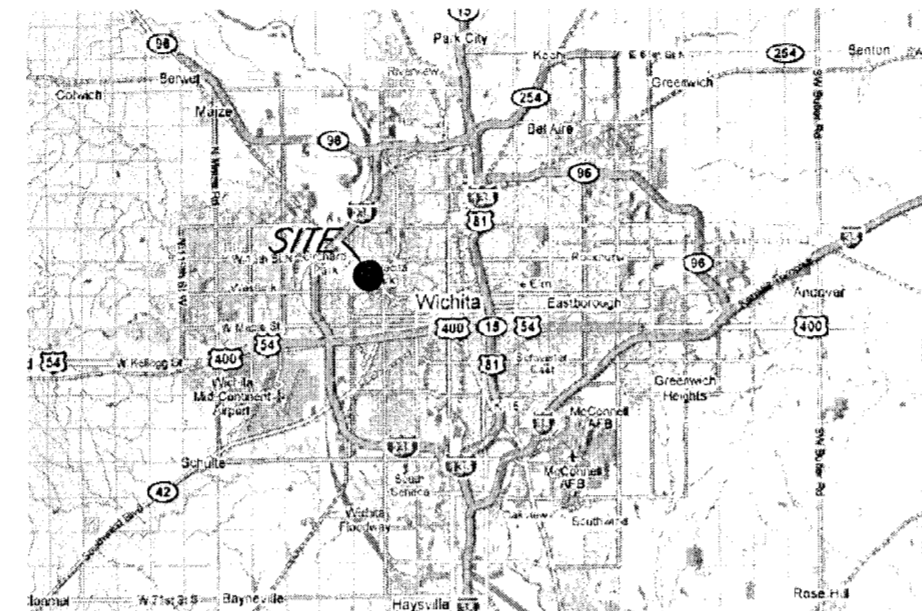
By: _____ Date _____
Lynn Rogers, President
Unified School District #259

State of Kansas)
County of Sedgwick) SS

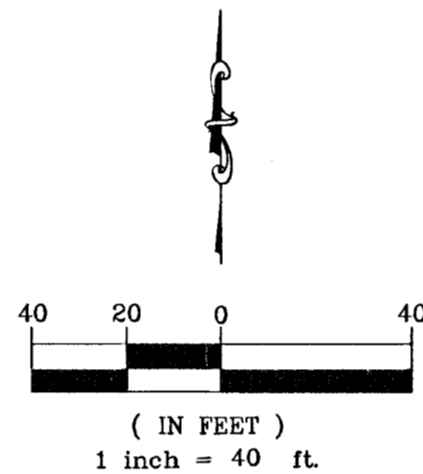
This instrument was acknowledged before me on this _____ day of _____, 2012, by Lynn Rogers, President, Unified School District #259.

Tricia L. Robello, L.S. #1246
Deputy County Surveyor
Sedgwick County, Kansas

Notary Public
My Commission Expires: _____



LOCATION MAP
(For Visual Use Only)



LEGEND:

- 3/4" Iron pipe (found)
- X X cut (found)
- 1/2" Rebar (found)
Smith and Oaks
- ⊕ 5/8" Rebar (set)
KEMPA CLS #157
- (M) Measured
- (D) Deeded

NOTES:

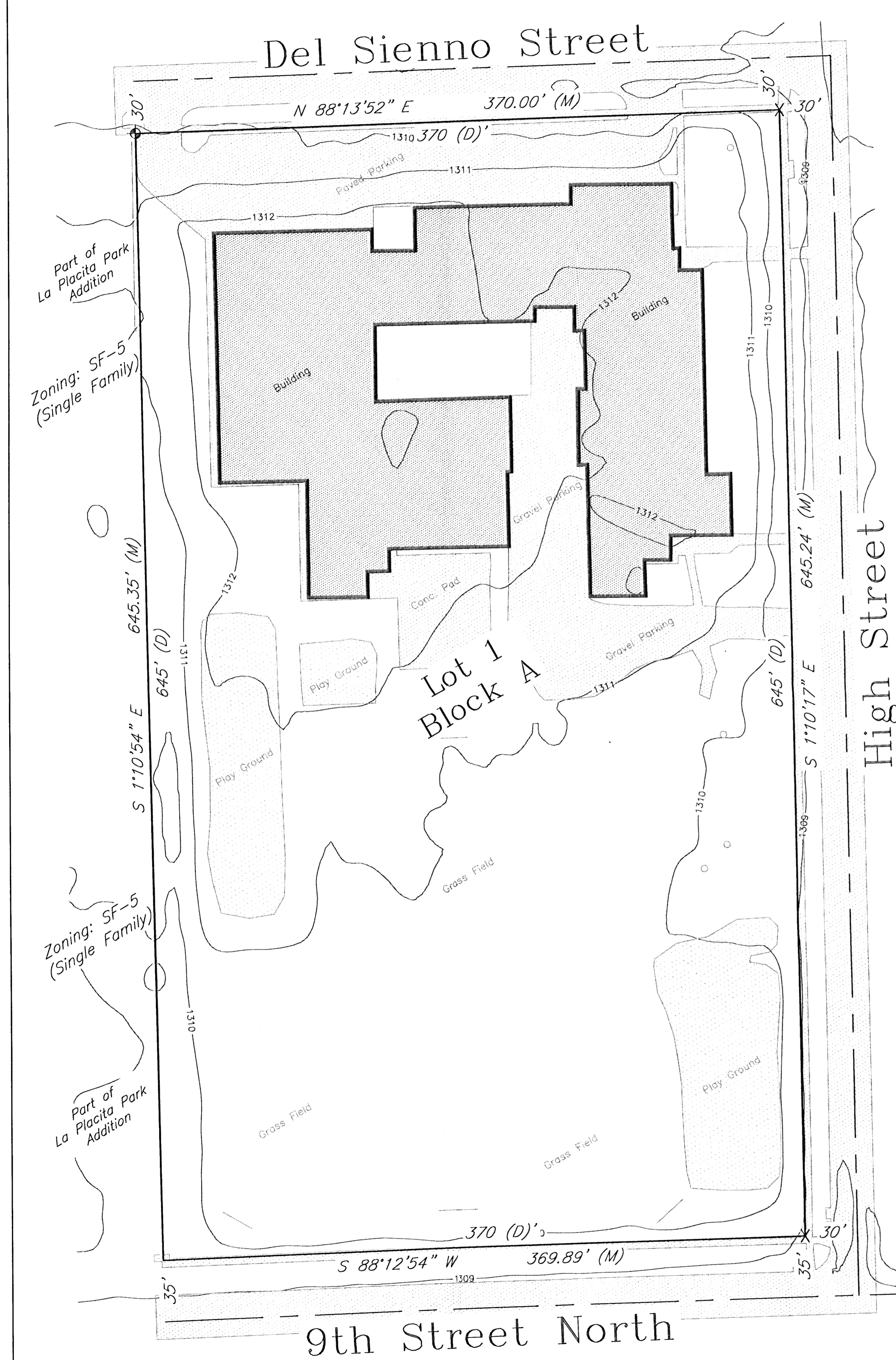
Utility locations are from Kansas One-Call.

BENCHMARKS:

- COW BM - West St. and 13th St. North
Northwest corner of intersection, East side
of traffic signal light base.
- 70.28' NW of section corner.
- 35.80' North of center line.
- 61.00' West of center line.

Elevation = 1313.82 NAVD 88

990.09 (M) / 990' (D) SE Corner, NW 1/4
Sec. 13 T27S R1W



KEM No. 12072 Date: 10/22/12

516 S. Market, Wichita, KS 67202 (316)264-0242