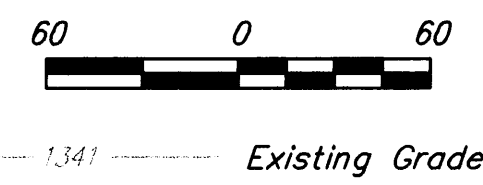
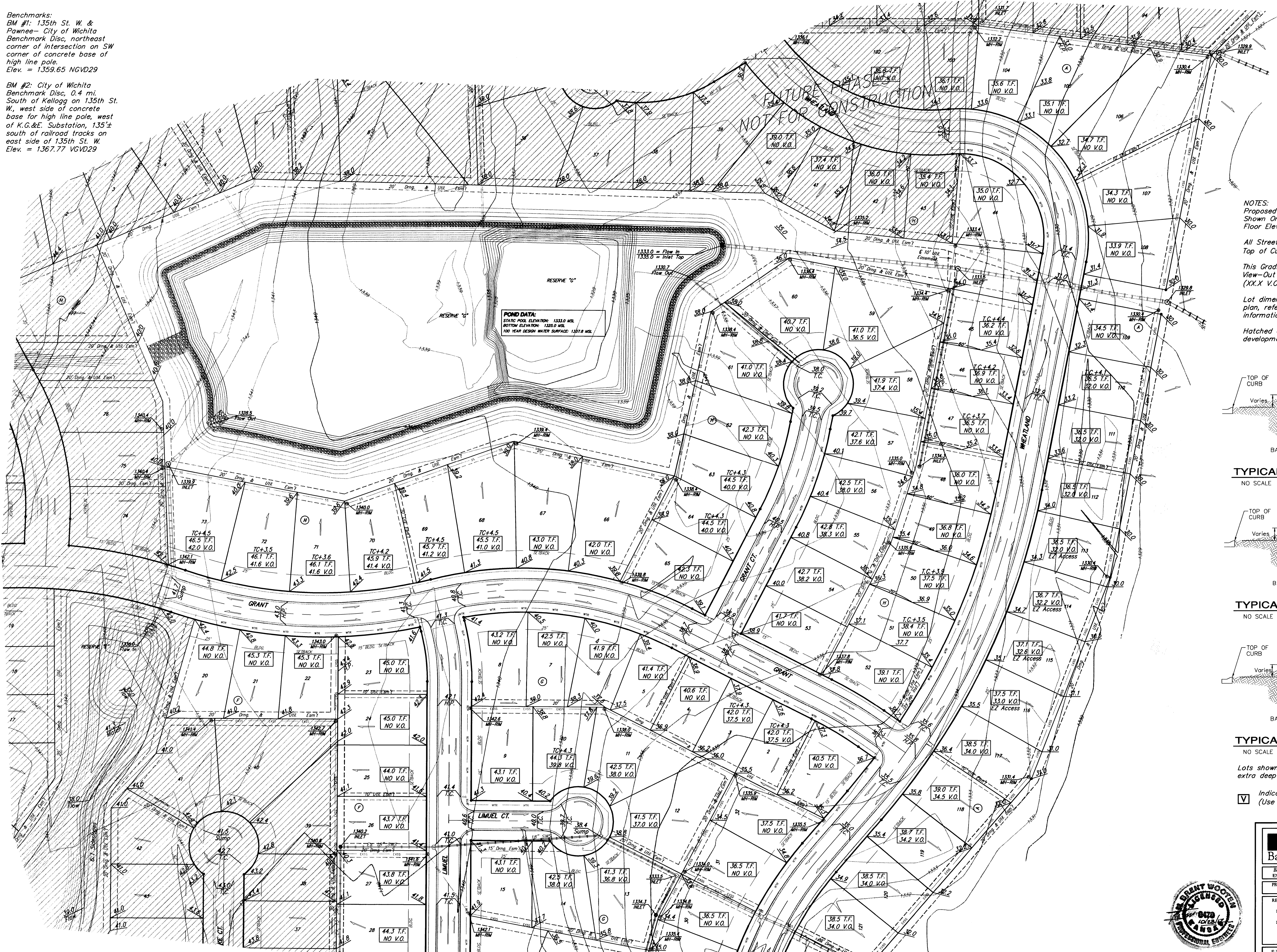


Benchmarks:
 BM #1: 135th St. W. & Pawnee- City of Wichita Benchmark Disc, northeast corner of intersection on SW corner of concrete base of high line pole. Elev. = 1359.65 NGVD29

BM #2: City of Wichita Benchmark Disc, 0.4 mi. South of Kellogg on 135th St. W., west side of concrete base for high line pole, west of K.G.&E. Substation, 135± south of railroad tracks on east side of 135th St. W. Elev. = 1367.77 NGVD29



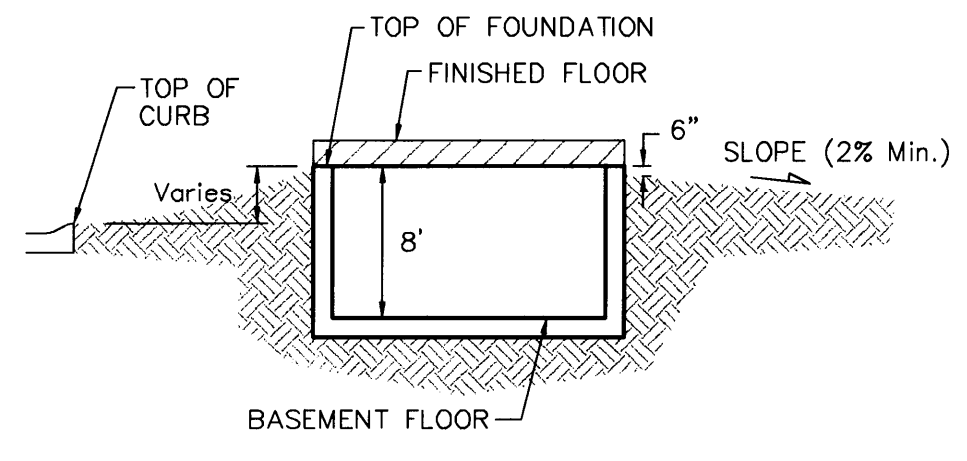
NOTES:
 Proposed Top of Foundation Elevations Are Shown On Plans. Contractor to Set Finished Floor Elevations.

All Street Elevations Shown on Plans Are Top of Curb (Full-Height).

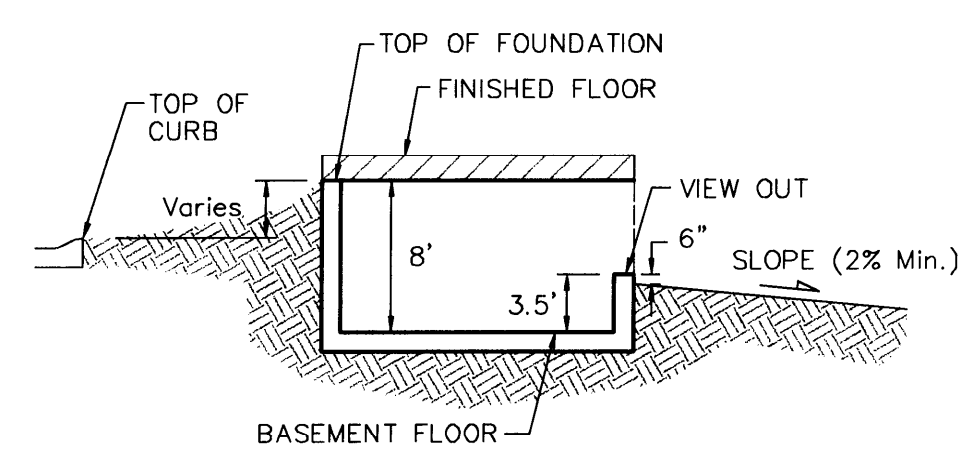
This Grading Plan is Designed with Walk-out & View-Out Basements. Elevations Shown as (XX.X V.O. or XX.X W.O.)

Lot dimensions have been omitted on this plan, refer to the recorded plat for this information.

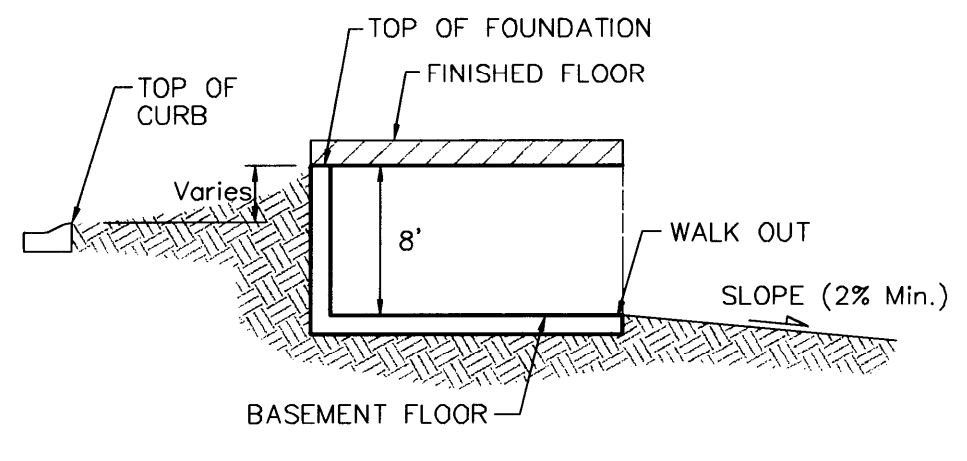
Hatched area represents future phase of development and is subject to change.



TYPICAL NON-VIEW OUT DETAIL



TYPICAL VIEW OUT DETAIL



TYPICAL WALK OUT DETAIL

Lots shown with "⊗" symbol indicates that extra deep foundations may be required.

⊗ Indicates Non-Typical View-Out (Use 5.5' From T.F. to V.O.)

		Turkey Creek 3rd Addition Grading Plan Wichita, Kansas	
<small>Baughman Company, P.A. 315 Ellis St. Wichita, KS 67211 P 316-262-7231 F 316-262-0149 ENGINEERING SURVEYING PLANNING LANDSCAPE ARCHITECTURE</small>			
PROJECT NUMBER	DESIGN	DRAWN	
6.20.11	NBW	JAK	
REVISIONS:	JAK	APPROVED	DATE
East Line Elevations			6/11
6.20.11	JAK	SCALE	1" = 60'
Phase 2 Street Closures		SHEET	
		2 OF 10	

