

Drainage Plan

TIMBER RIDGE 5TH ADDITION

WICHITA, SEDGWICK COUNTY, KANSAS

West Basin

Elevation	Basin Area	Basin Size Volume.
1345	30	0
1346	4,790	1,730
1347	5,790	7,010
1348	6,770	13,280
1349	7,740	20,530
1350	9,000	28,890

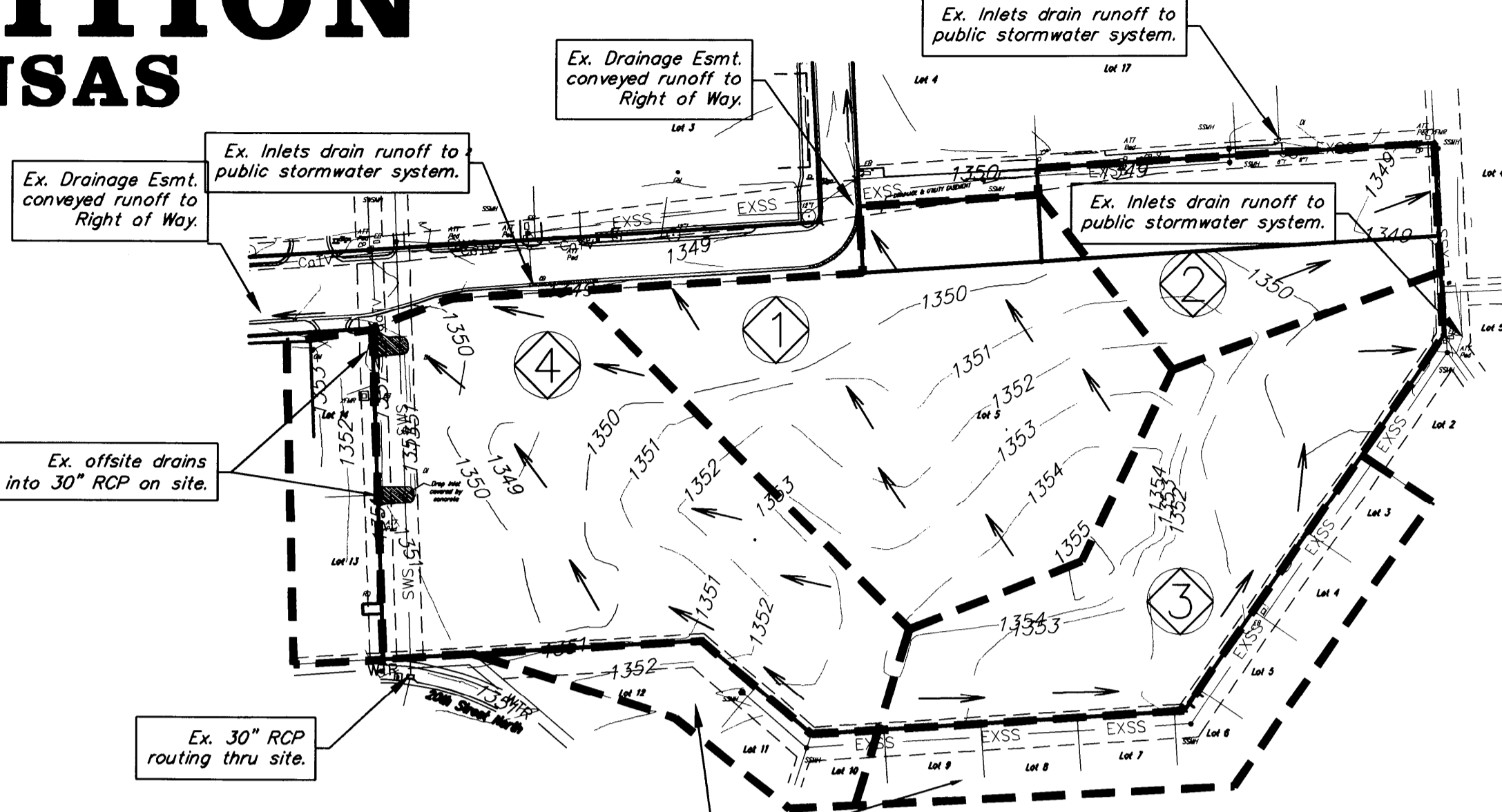
Northeast Basin

Elevation	Basin Area	Basin Size Volume.
1346	4,820	0
1347	5,940	5,370
1348	7,430	12,030
1349	9,610	20,530
1350	14,020	32,280
1350.75	16,200	39,820

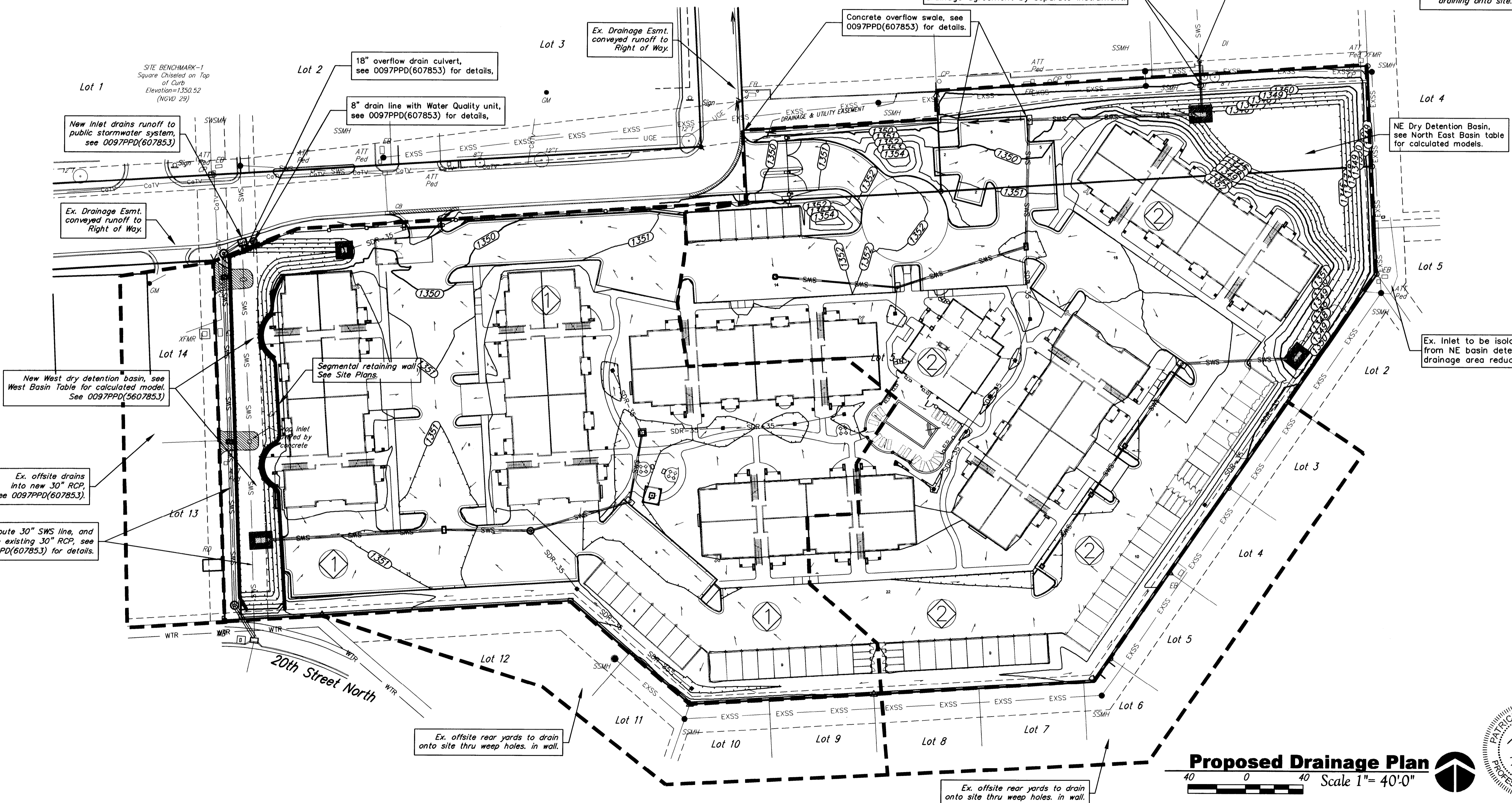
DRAINAGE BASINS

Existing Conditions										
Basin #	Area (ac)	Tc (min)	Curve #	Q1 (cfs)	Q2 (cfs)	Q5 (cfs)	Q10 (cfs)	Q25 (cfs)	Q50 (cfs)	Q100 (cfs)
North #1	1.92	15	80	3.7	5.6	8.4	10.5	13.2	15.6	18.3
North East #2	0.79	15	80	1.1	1.6	2.5	3.1	3.8	4.5	5.3
South East #3	1.30	15	80	1.8	2.7	4.0	5.0	6.3	7.5	8.8
West #4	1.88	15	80	2.6	3.9	5.8	7.3	9.1	10.8	12.7
Total Site =	5.89	Q*		9.1	13.7	20.8	25.8	32.5	38.4	45.1

Proposed Conditions										
Basin #	Area (ac)	Tc (min)	Curve #	Q1 (cfs)	Q2 (cfs)	Q5 (cfs)	Q10 (cfs)	Q25 (cfs)	Q50 (cfs)	Q100 (cfs)
West Side #1	2.66	15	93	6.7	8.8	11.8	13.8	16.4	18.7	21.3
East Side #2	3.23	15	93	8.2	10.7	14.3	16.7	19.9	22.7	25.9
West Basin				2.1	2.3	2.7	3.1	4.2	5.1	7.7
NE Basin				5.4	4.2	5.0	5.5	6.4	8.5	11.4
Total Site =	5.89	Q*		5.4	6.5	7.7	8.5	10.5	13.6	19.1



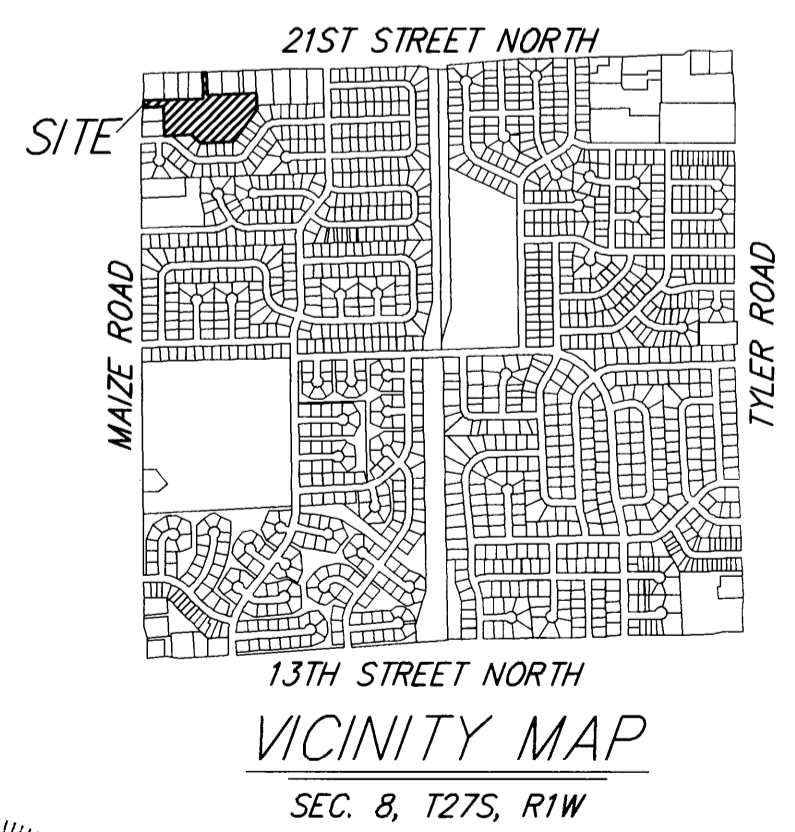
Existing Drainage Plan
Scale 1" = 100'0"



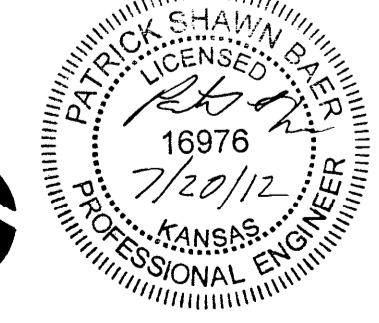
BENCHMARK

- #1 - "□" Chiseled on Top of Curb at the Southwest Corner of Lot 2, Timber Ridge 4th Addition, Wichita, Sedgwick County, Kansas. Elevation=1350.52 (NGVD 29)
- #2 - "V" Chiseled on Top of Curb at the Southwest Corner of Lot 17, Timber Ridge 2nd Addition, Wichita, Sedgwick County, Kansas. Elevation=1350.10 (NGVD 29)

VICINITY



TIMBER RIDGE 5TH ADDITION
WICHITA, SEDGWICK COUNTY
KANSAS



Baughman Company, P.A.
315 Ellis St. Wichita, KS 67211 F 316-262-7271 F 316-262-0149
ENGINEERING | SURVEYING | PLANNING | LANDSCAPE ARCHITECTURE