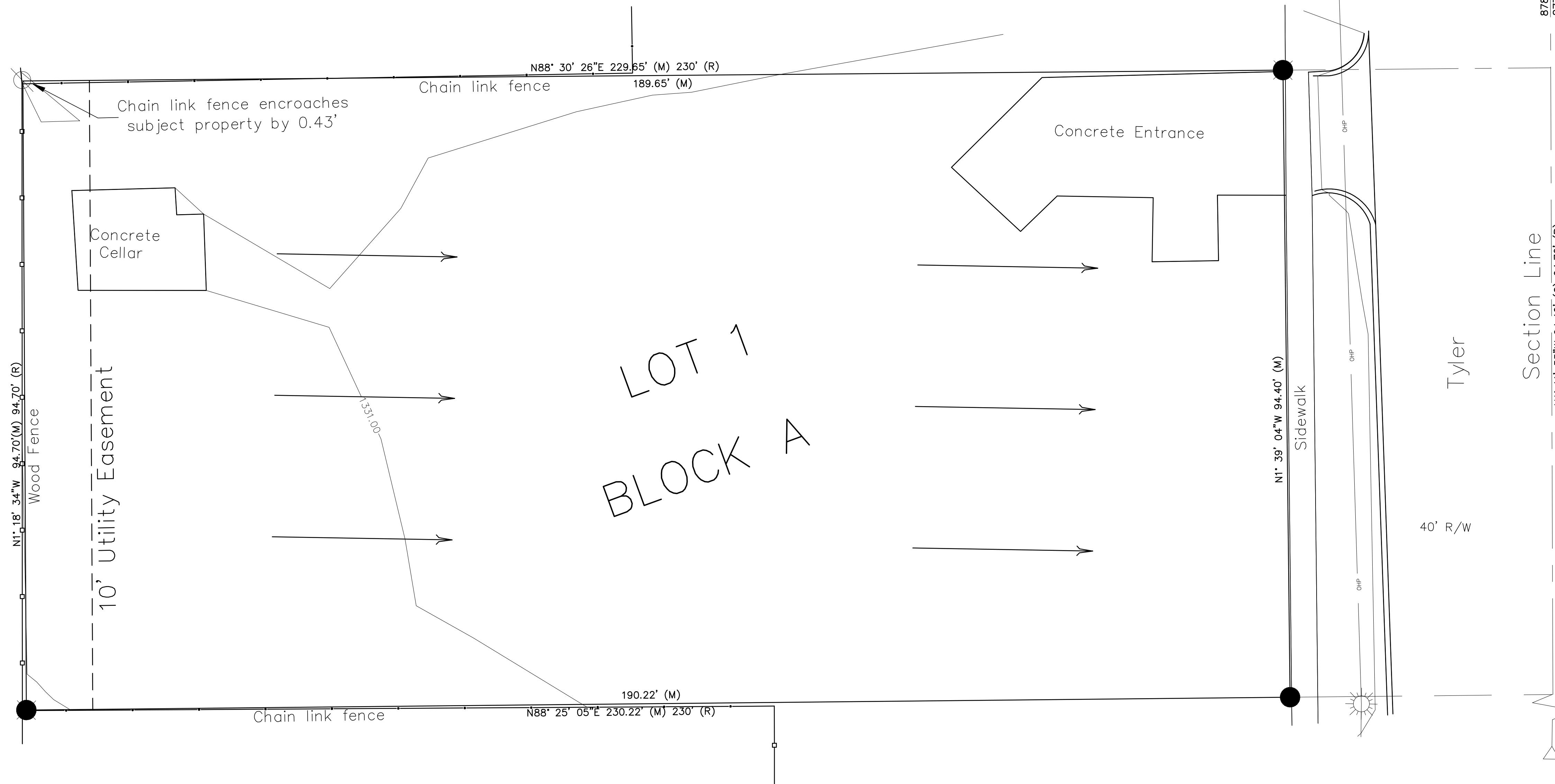


# DRAINAGE PLAN FOR WT INVESTMENTS ADDITION

WICHITA, SEDGWICK COUNTY, KANSAS



| Area # | Area | I <sub>5</sub> | I <sub>100</sub> | Prior Condition<br>C=0.35 |                  | Proposed Condition<br>C=0.85 |                  |
|--------|------|----------------|------------------|---------------------------|------------------|------------------------------|------------------|
|        |      |                |                  | Q <sub>5</sub>            | Q <sub>100</sub> | Q <sub>5</sub>               | Q <sub>100</sub> |
| 1      | 0.41 | 4.56           | 7.37             | 0.65                      | 1.06             | 1.59                         | 2.57             |
| TOTAL  | 0.41 |                |                  | 0.65                      | 1.06             | 1.59                         | 2.57             |

**NOTES:**

1. Site grading and drainage plans to be designed by a licensed Professional Engineer.
2. The drainage plan will need to be updated and filed with city engineering at the time of building permit(s).

NE Cor. Sec. 20-T27S-R1W  
Fnd. 1/2" IP in Thimble

E. 1/4 Sec. Cor. Sec. 20-T27S-R1W  
Fnd. 1/2" Bar

- LEGEND**
- 5/8" Bar Found
  - 1" Pinched Pipe Found
  - (M) Measured distance
  - (R) Record distance
  - (C) Calculated distance

