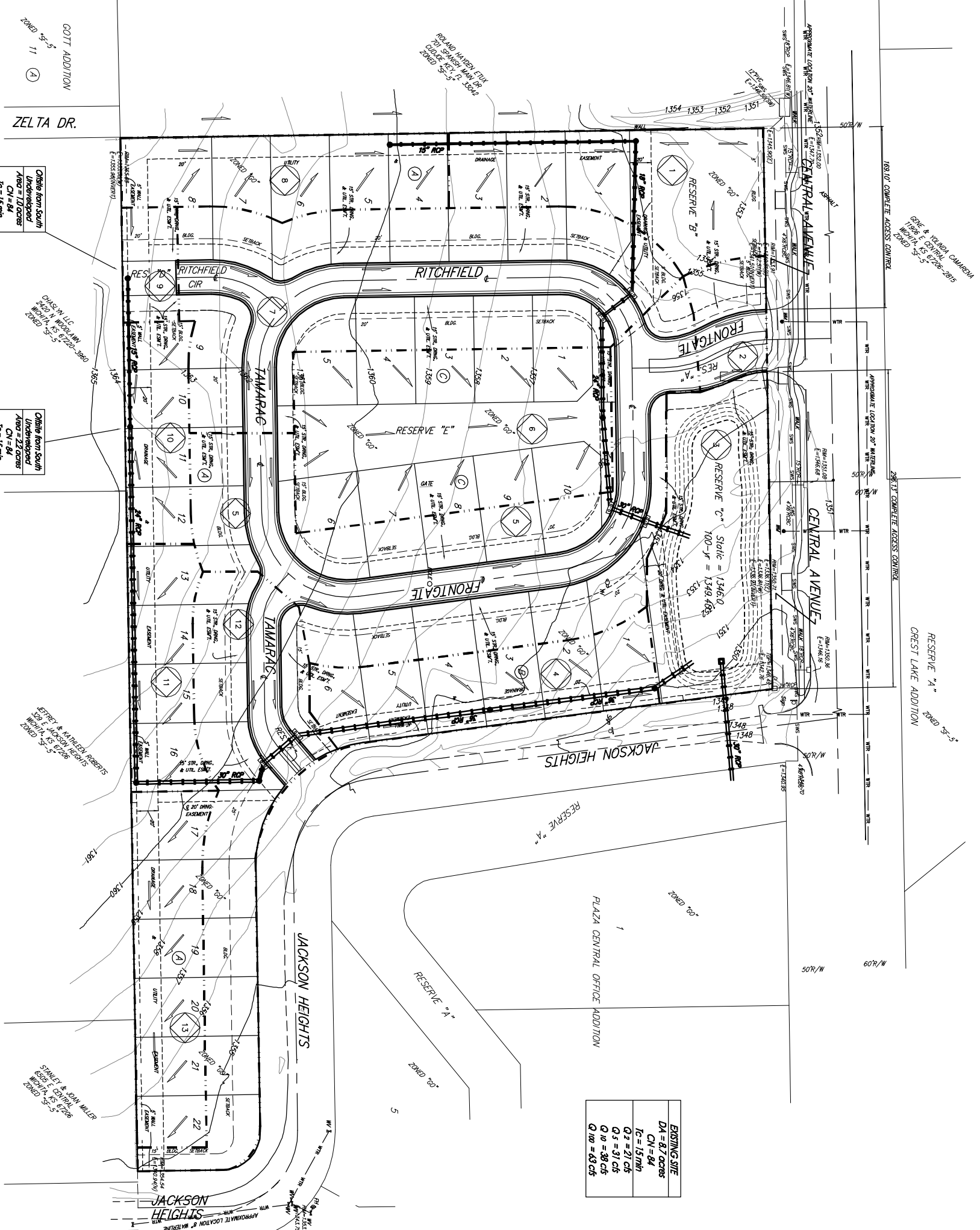


DRAINAGE PLAN FRONTGATE ADDITION WICHITA, SEDGWICK COUNTY, KANSAS



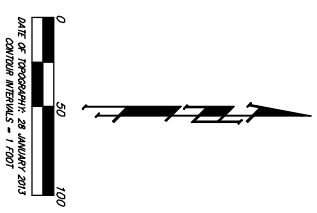
Offsite from South	
Undeveloped	Area = 1.0 acres
CV = 64	
$T_c = 15 \text{ min}$	
$Q_2 = 2.5 \text{ cfs}$	
$Q_3 = 3.5 \text{ cfs}$	
$Q_4 = 4.3 \text{ cfs}$	
$Q_5 = 5.3 \text{ cfs}$	
$Q_{10} = 7.2 \text{ cfs}$	

Offsite from South	
Undeveloped	Area = 2.2 acres
CV = 64	
$T_c = 15 \text{ min}$	
$Q_2 = 5.1 \text{ cfs}$	
$Q_3 = 7.8 \text{ cfs}$	
$Q_4 = 9.5 \text{ cfs}$	
$Q_5 = 11 \text{ cfs}$	
$Q_{10} = 16 \text{ cfs}$	

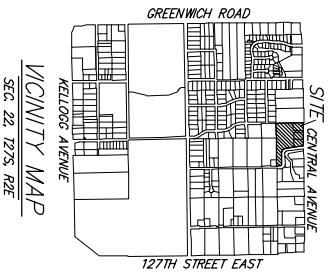
EXISTING SITE	
DA = 8.7 acres	
CN = 64	
$T_c = 15 \text{ min}$	
$Q_2 = 21 \text{ cfs}$	
$Q_3 = 31 \text{ cfs}$	
$Q_{10} = 43 \text{ cfs}$	

PROPOSED POND (Bottom = 1346.0)			
STAGE	INFLOW	OUTFLOW	ELEVATION
2'W	28 cfs	14 cfs	1348.7
10'W	44 cfs	28 cfs	1349.3
100'W	69 cfs	43 cfs	1349.3

NORTH WEST BASIN	
ELEVATION	AREA (A110)
1346	12000
1347	16000
1348	18000
1349	21000



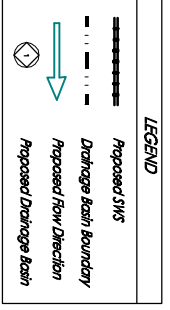
DATE OF PROVISION: 28 JANUARY 2013
DRAWN BY: CAMERON WENZEL - 11707



The pond outlet will consist of a 37" RCP of 100' length (1346.0). The RCP will extend under Jackson Heights and discharge directly into the adjacent channel. Channel protection will be provided via a 2" offset of static elevation will be provided via a 2" box structure (flow) at elevation 1348.2

Pond Volume Below Still Water Pool	
Static	12000
2'W	14000
10'W	18000
100'W	21000

Pond Volume Below Still Water Pool	
Static	12000
2'W	14000
10'W	18000
100'W	21000



NOTES: There is no FEMA SHM located on this property as of this date per FEMA RMI Form 379 of 2011 for Wichita, Sedgewick County, Kansas effective February 2, 2007.
The Miami Storm Water Sewer will drain the developed lots/units into the proposed pond system. SWS has been provisionally sized for this plan and will be finalized upon SWD and street engineering plans submitted.