

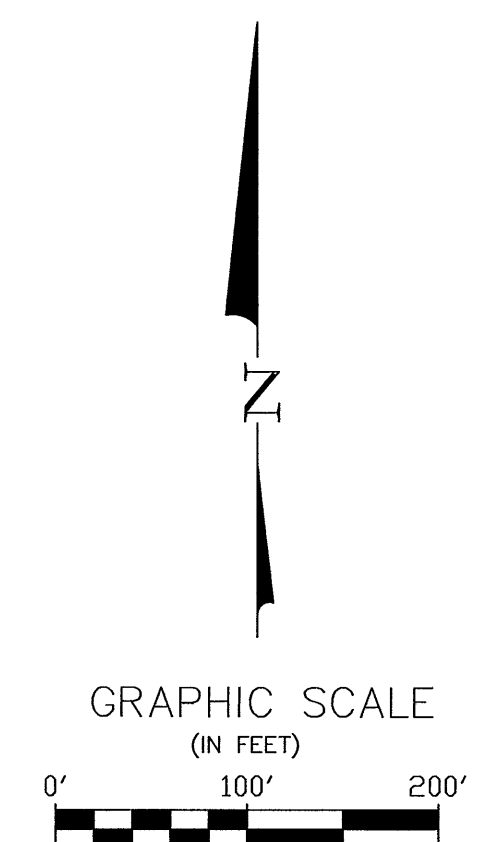
NOTES:

1. Cross-drainage agreements shall be required at the time of platting.
2. All outlets to West Street, MacArthur Road or other off site areas shall conform to the City of Wichita water quality requirements.
3. Detailed site grading and final drainage plans to be designed by a licensed professional engineer at the time of building permit.
4. Storm sewer easements will be provided at the time of building permit only as needed to allow drainage to discharge across adjacent lots.
5. Any revised drainage plan must be approved by storm water engineer prior to building permits being issued.
6. Any storm water detention areas required may be revised when the final plans for the development are completed but the runoff amounts will be at or below the pre-development discharge rates. The filed final drainage report shall show discharge rates and stage/storage/discharge curves for any on-site detention areas.
7. The detention pond as shown is proposed. The final pond location, configuration, and design will need to be resolved at the time of building permit.

CALCULATION NOTES:

1. Determination of Q's was made using the SCS method.
2. Curve Numbers weighted based on hydrologic soil groups.

Site	Area	CN	Existing Conditions (24-Hour Storm)						
			1-Year	2-Year	5-Year	10-Year	25-Year	100-Year	
Lots to MacArthur	2.21	89.5	4.89	6.60	9.07	10.79	12.99	17.12	
Lots to West Street	2.70	88.0	5.59	7.67	10.68	12.79	15.49	20.56	
Site to Pond	25.24	90.6	11.71	15.82	21.74	25.88	31.20	41.19	

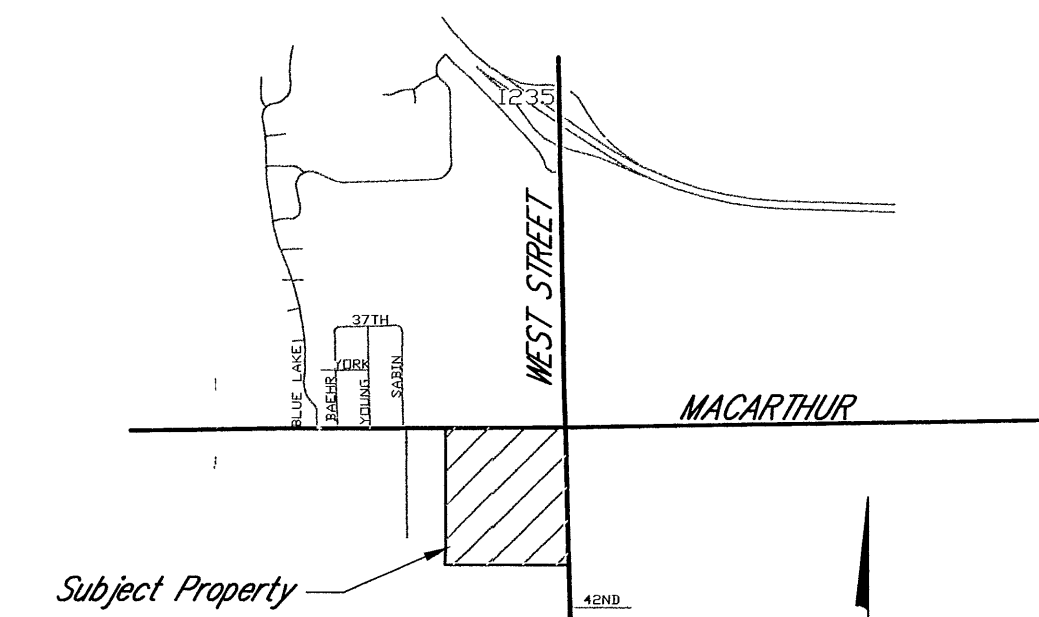


LEGEND:

- 1 1/2" Pipe Found
- ⊗ Mooring B&C Found
- ▶ Section Corner Found
- 5/8" Bar w/Poe Cap Set

BENCHMARK:

Center of square cut on NW corner of concrete pad for signal control box at SW corner of MacArthur and West Street. Elevation 1286.89 NAVD88



MAC WEST ADDITION

A TRACT IN THE NORTHEAST QUARTER OF SECTION 14, T28S, R1W
WICHITA, SEDGWICK COUNTY, KANSAS

EXISTING CONDITIONS DRAINAGE PLAN

2013

SURVEY NOTES:

Field Survey work completed on January 18, 2013.
Topography by photogrammetric methods from aerial photographs taken on August 11, 2007.
Horizontal datum NAD 83 modified to ground
Vertical datum NAVD 88

PROPERTY OWNER / SUBDIVIDER:

Mac West Holdings, LLC of Sedgwick County, in the State of Kansas.

LOCATION MAP
Not to Scale



POE & ASSOCIATES, INC.
CONSULTING ENGINEERS
5940 E. Central, Suite 200 □ Wichita, KS
67208-4242
Phone 316/685-4114 □ FAX 316/685-4444