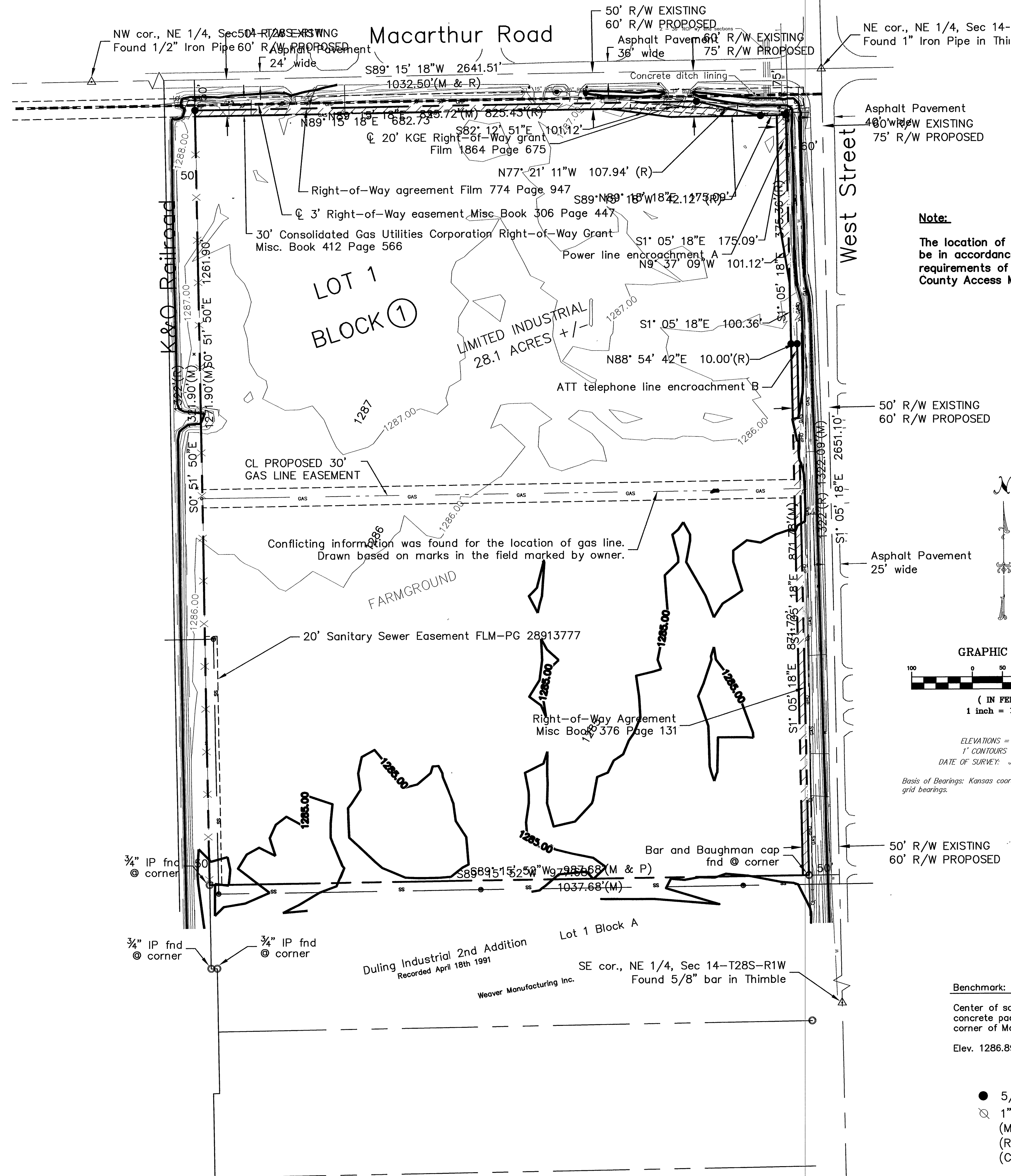


ONE STEP FINAL PLAT OF  
**Mac West Addition**  
 WICHITA, SEDGWICK COUNTY, KANSAS



State of Kansas)  
 Sedgwick County) ss

I, the undersigned licensed land surveyor in aforesaid county and state, do hereby certify that, under the supervision of the undersigned, we, Poe & Associates, Inc., have surveyed and platted "MAC WEST ADDITION", Wichita, Sedgwick County, Kansas and that the accompanying plat is a true and correct exhibit of the property surveyed, described as follows:

This plat of "MAC WEST ADDITION", Wichita, Sedgwick County, Kansas, has been submitted to and approved by the Wichita Sedgwick County Metropolitan Area Planning Commission, Wichita, Kansas.

Dated this \_\_\_\_\_ day of \_\_\_\_\_, 2013.

Wichita-Sedgwick County Metropolitan Area Planning Commission

\_\_\_\_\_  
 David Dennis Chair

\_\_\_\_\_  
 John L. Schiegel Secretary

This plat approved and all dedications shown hereon, accepted by the City Council of the City of Wichita, Kansas, this \_\_\_\_\_ day of \_\_\_\_\_, 2013.

\_\_\_\_\_  
 Carl Brewer Mayor

\_\_\_\_\_  
 Karen Sublett City Clerk

The North 1322 feet of the Northeast Quarter lying East of the Missouri Pacific Railroad right of way, and except roads on the North and East, in Section 14, Township 28 South, Range 1 West of the 6th P.M., Sedgwick County, Kansas

Existing public dedications, rights-of-way, and easements being vacated by virtue of K.S.A. 12-512(b).

**Note:**  
 The location of all access opening shall be in accordance with minimum spacing requirements of the Wichita / Sedgwick County Access Management Standards.

\_\_\_\_\_  
 William P. Fox #799 Surveyor

State of Kansas)  
 Sedgwick County) ss

Know all men by these presents that we, the undersigned, have caused the land described in the surveyor's certificate to be platted into a Lot and a Block to be known as "MAC WEST ADDITION", Wichita, Sedgwick County, Kansas. The utility easement is hereby granted as indicated for constructing, maintaining, operating, and repairing utilities.

Reviewed in accordance with K.S.A. 58-2005 on this \_\_\_\_\_ day of \_\_\_\_\_, 2013.

\_\_\_\_\_  
 Tricia L. Robello, LS #1246 Deputy County Surveyor  
 Sedgwick County Kansas

MacWest, LLC

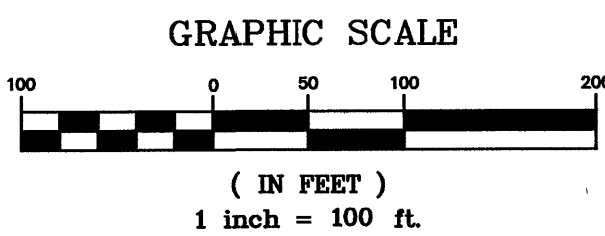
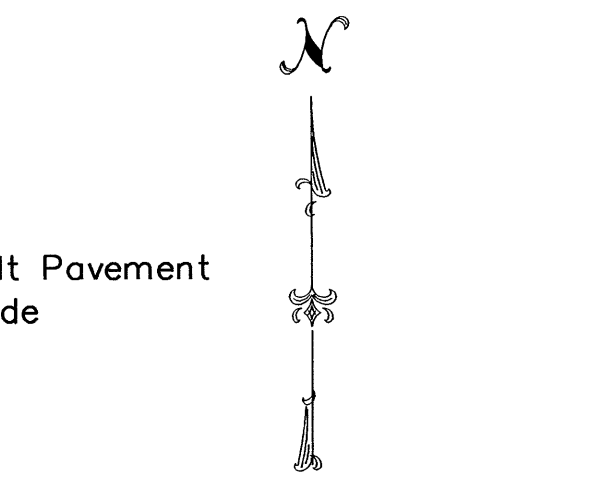
By: \_\_\_\_\_

Name: \_\_\_\_\_

Title: \_\_\_\_\_

Entered on transfer record this \_\_\_\_\_ day of \_\_\_\_\_, 2013.

\_\_\_\_\_  
 Kelly B. Arnold County Clerk



ELEVATIONS = NAVD88  
 1' CONTOURS = LIDAR  
 DATE OF SURVEY: JAN 18th, 2013  
 Basis of Bearings: Kansas coordinate system of 1983 south zone grid bearings.

State of Kansas)  
 Sedgwick County) ss

The foregoing instrument acknowledged before me, this \_\_\_\_\_ day of \_\_\_\_\_, 2013, by \_\_\_\_\_.

State of Kansas)  
 Sedgwick County) ss

This is to certify that this plat has been filed for record in the office of the Register of Deeds, this \_\_\_\_\_ day of \_\_\_\_\_, 2013, at o'clock \_\_\_\_\_ M: and is duly recorded.

\_\_\_\_\_  
 Bill Meek Register of Deeds

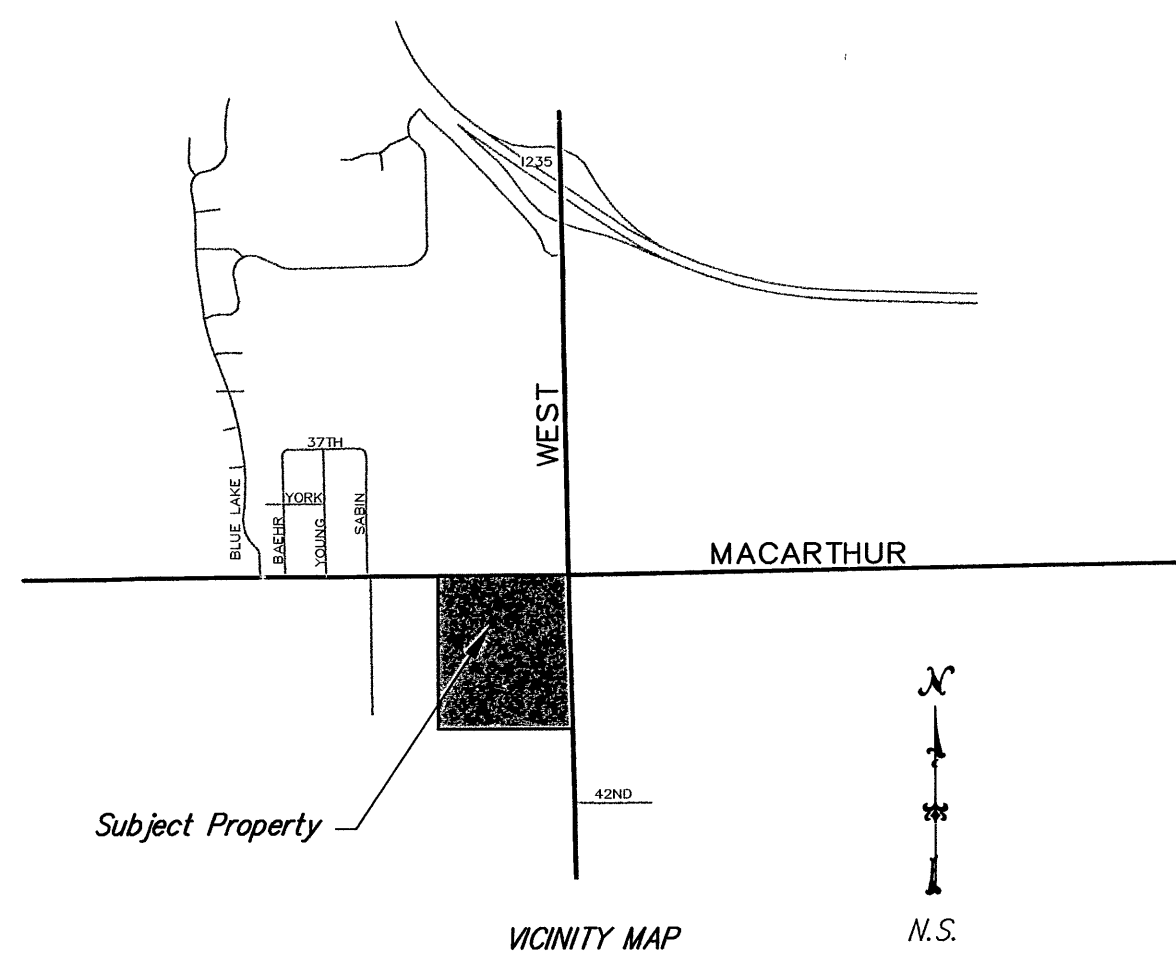
\_\_\_\_\_  
 Notary Public

\_\_\_\_\_  
 Tonya Buckingham Deputy

My App't. Exp. \_\_\_\_\_

Benchmark:  
 Center of square cut on N.W. corner of concrete pad for signal control box at the S.W. corner of MacArthur and West St.  
 Elev. 1286.89 NAVD88

- LEGEND**
- 5/8" Bar Found
  - 1" Pinched Pipe Found
  - (M) Measured distance
  - (R) Record distance
  - (C) Calculated distance



Lot	Block	Elevation
1	1	1285.1

**POE & ASSOCIATES OF KANSAS, INC.**  
 CONSULTING ENGINEERS  
 5940 E. Central, Suite 200 ■ Wichita, KS 67208-4242  
 Phone 316/685-4114 ■ FAX 316/685-4444  
 P: \102033\102033-base.dwg  
 Date: 2/12/2013