

**NOTES:**

1. Cross-drainage agreements shall be required at the time of platting.
2. All outlets to the West Street, MacArthur Road or other off site areas shall conform to City of Wichita water quality requirements.
3. Detailed site grading and final drainage plans to be designed by a licensed professional engineer at the time of building permit.
4. Storm sewer easements will be provided at the time of building permit only as needed to allow drainage to discharge across adjacent lots.
5. Any revised drainage plan must be approved by storm water engineer prior to building permits being issued.
6. Any storm water detention areas required may be revised when the final plans for the development are completed but the runoff amounts will be at or below the pre-development discharge rates. The filed final drainage report shall show discharge rates and stage/storage/discharge curves for any on-site detention areas.
7. The detention pond as shown is proposed. The final pond location, configuration, and design will need to be resolved at the time of building permit.
8. A drainage reserve or easement for the proposed detention cell will be dedicated by Separate Instrument during final site design.
9. Downstream bank protection will be designed at the time of final site design.

**CALCULATION NOTES:**

1. Determination of Q's was made using the SCS method.
2. Curve Numbers weighted based on hydrologic soil groups.

Existing Conditions (24-Hour Storm)								
Site	Area	CN	1-Year	2-Year	5-Year	10-Year	25-Year	100-Year
Lots to MacArthur	2.21	89.5	4.89	6.60	9.07	10.79	12.99	17.12
Lots to West Street	2.70	88.0	5.59	7.67	10.68	12.79	15.49	20.56
Site to Pond	25.24	90.6	11.71	15.82	21.74	25.88	31.20	41.19

Proposed Conditions (24-Hour Storm)								
Site	Area	CN	1-Year	2-Year	5-Year	10-Year	25-Year	100-Year
Lots to MacArthur	2.21	92.0	5.40	7.13	9.58	11.28	13.46	17.55
Lots to West Street	2.70	91.0	6.35	8.46	11.46	13.55	16.23	21.24
Site to Pond	25.24	92.7	28.72	37.85	50.83	59.86	71.41	93.09

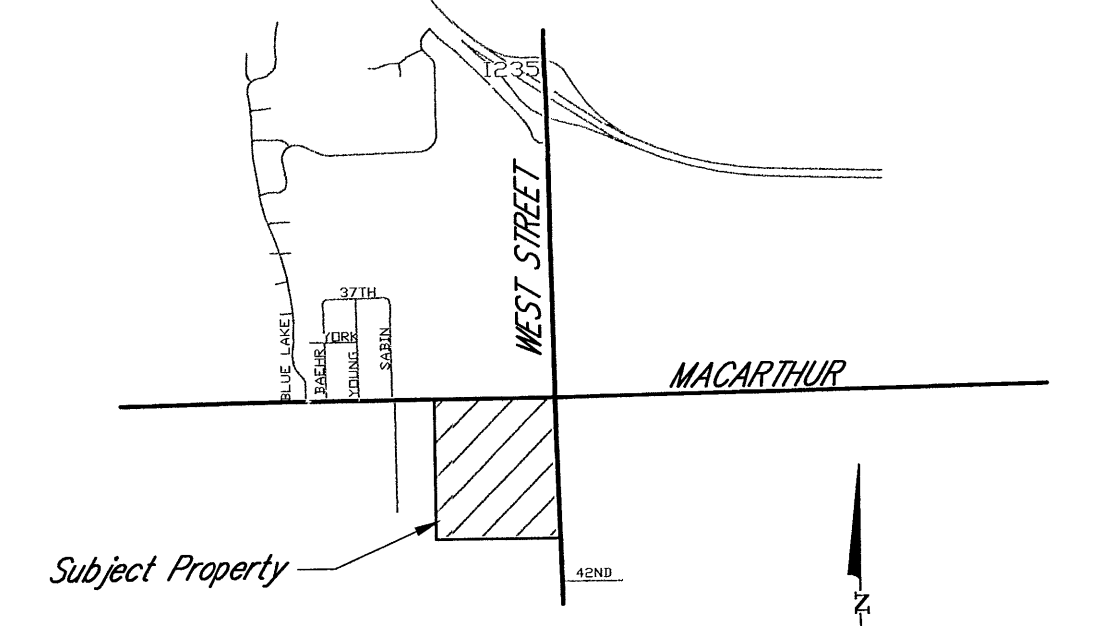
Detention Cell Discharge Rates								
Site	Area	CN	1-Year	2-Year	5-Year	10-Year	25-Year	100-Year
Site to Pond	25.24	92.7	11.71	15.45	20.17	22.38	24.75	28.46

Stage-Storage Discharge Table		
Stage (elev)	Storage (acre-ft)	Discharge (cfs)
1276.00	0	0
1277.00	0.129	3.432
1278.00	0.54	6.801
1279.00	1.081	9.105
1280.00	1.752	14.29
1281.00	2.554	19.16

**LEGEND:**

- 1 1/2" Pipe Found
- ⊗ Mooring B&C Found
- ▶ Section Corner Found
- 5/8" Bar w/Poe Cap Set
- ⊕ **BENCHMARK:**  
Center of square cut on NW corner of concrete pad for signal control box at SW corner of MacArthur and West Street.  
Elevation 1286.89 NAVD88



# MAC WEST ADDITION

A TRACT IN THE NORTHEAST QUARTER OF SECTION 14, T28S, R1W  
WICHITA, SEDGWICK COUNTY, KANSAS

## PROPOSED DRAINAGE PLAN

2013

**SURVEY NOTES:**

Field Survey work completed on January 18, 2013.  
Topography by photogrammetric methods from aerial photographs taken on August 11, 2007.  
Horizontal datum NAD 83 modified to ground  
Vertical datum NAVD 88

**PROPERTY OWNER / SUBDIVIDER:**

Mac West Holdings, LLC of Sedgwick County, in the State of Kansas.

**LOCATION MAP**  
Not to Scale



**POE & ASSOCIATES, INC.**  
CONSULTING ENGINEERS  
5940 E. Central, Suite 200 D Wichita, KS  
67208-4242  
Phone 316/685-4114 FAX 316/685-4444