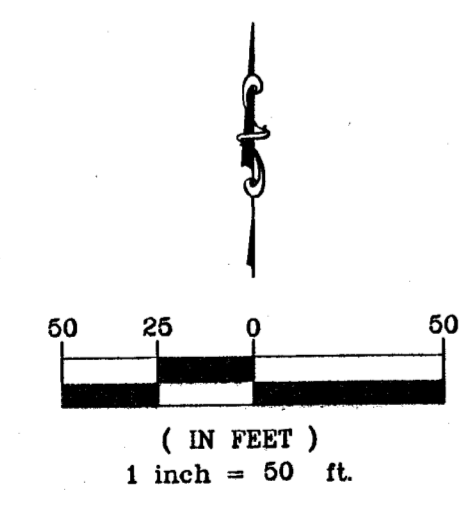
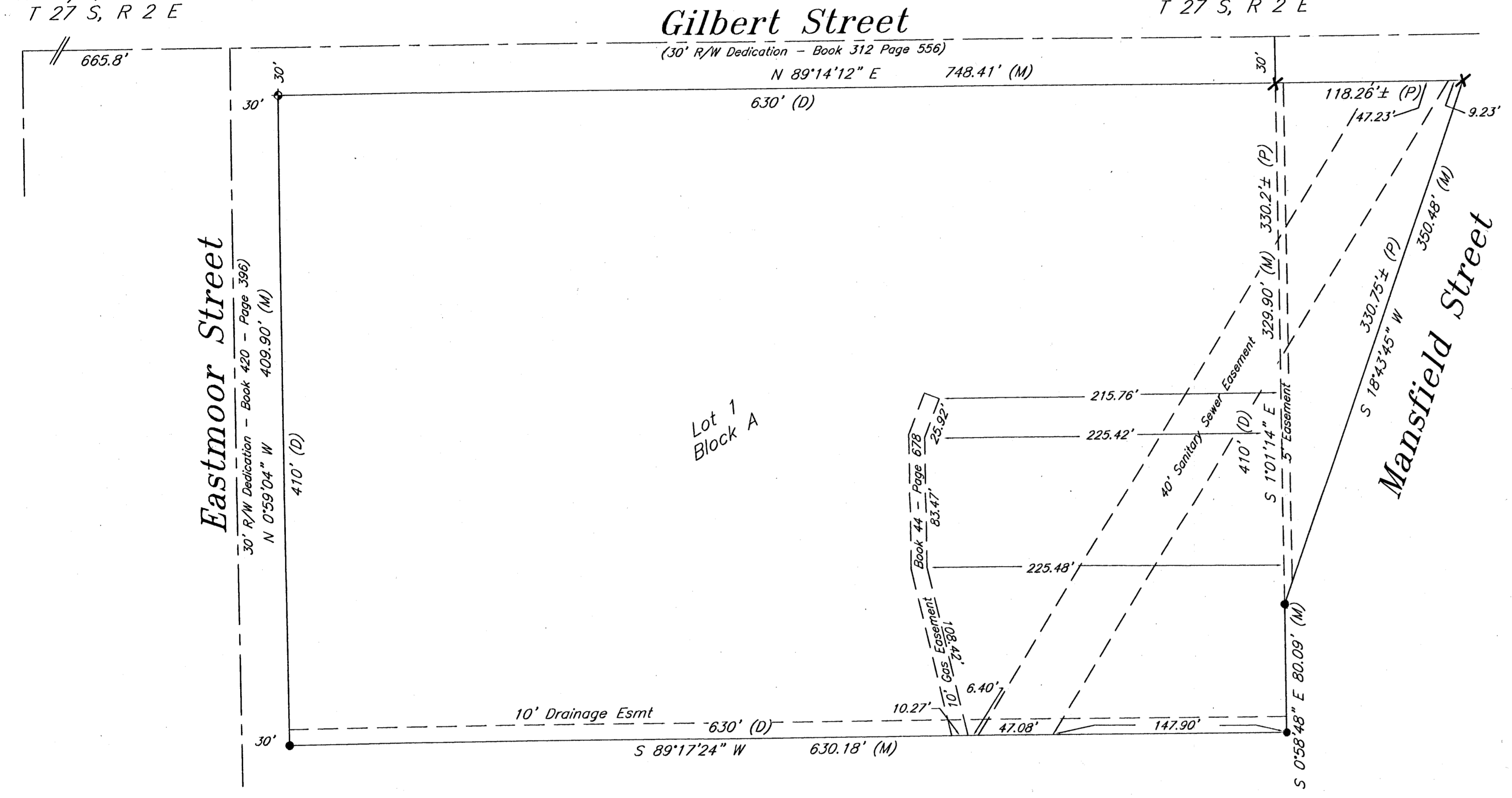


Bostic Traditional Magnet Addition Wichita, Sedgwick County, Kansas

Part of the NW 1/4, Section 29, Township 27 South, Range 2 East of the 6th. P.M.

NW Cor, SW 1/4,
NW 1/4, Sec. 29,
T 27 S, R 2 E

NE Cor, SW 1/4,
NW 1/4, Sec. 29,
T 27 S, R 2 E



- LEGEND:**
- 1/2" Iron Pipe (found)
 - 3/4" Iron Pipe (found)
 - ◆ 1/2" Rebar (found)
 - X X cut (found)

PAD ELEV.:
Minimum Pad Elevation = 1331.50

BENCHMARKS:
Rock Road and Lincoln
COW benchmark @ SW corner intersection
34.5' S. of center lines
103.80' W. of center lines
Elevation = 1331.95 NAVD 88

State of Kansas }
County of Sedgwick } SS

State of Kansas }
City of Wichita } SS

I, Bradley C. Ward, a licensed land surveyor of the State of Kansas, do hereby certify that the following described tract of land was surveyed on the 26th day of September, 2012 and the accompanying final plat prepared and that all the monuments shown herein actually exist and their positions are correctly shown to the best of my knowledge and belief.

This plat of Bostic Traditional Magnet Addition, Wichita, Sedgwick County, Kansas, has been submitted to and approved by the Wichita-Sedgwick County Metropolitan Area Planning Commission, Wichita, Kansas. Dated this _____ day of _____, 2012.
Wichita-Sedgwick County Metropolitan Area Planning Commission.

LEGAL DESCRIPTION

The North 440 feet of the East 660 feet of the Southwest 1/4 of the Northwest 1/4; EXCEPT the North 30 feet and the West 30 feet for street, of Section 29, Township 27 South, Range 2 East, of the Sixth Principal Meridian, Sedgwick County, Kansas. AND Block 3, Replat of Block 1, Sunny-Brook Addition, to Wichita, Kansas.

David Dennis, Chair

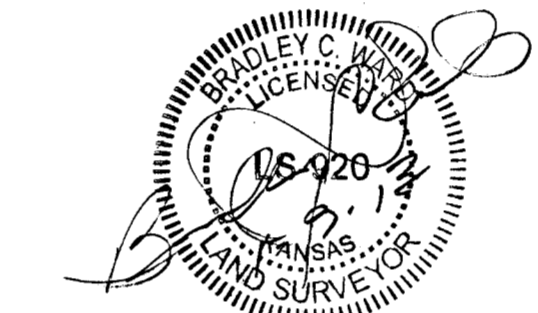
John L. Schlegel, Secretary

All easements and Rights of Way within said tract are hereby vacated by virtue of KSA 12-512b, as amended.

State of Kansas }
City of Wichita } SS

This plat approved and all dedications shown hereon accepted by the City Council of the City of Wichita, Kansas, this _____ day of _____, 2013.

At the Direction of the City Council



Bradley C. Ward, L.S. #920

Carl Brewer, Mayor

Karen Sublett, City Clerk

Entered on transfer record this _____ day of _____, 2013.

State of Kansas }
County of Sedgwick } SS

Kelly B. Arnold, County Clerk

Know all men by these presents, that we, the undersigned, have caused the land described in the surveyor's certificate to be platted into a Lot and Block, to be known as Bostic Traditional Magnet Addition, Wichita, Sedgwick County, Kansas. Any easements are hereby granted as indicated for constructing, maintaining, operating, and repairing public utilities. A drainage plan has been developed for the plot and that all drainage easements, rights-of-way, or reserves shall remain at established grades or as modified with the approval of the applicable City or County Engineer, and unobstructed to allow for the conveyance of stormwater. And further that the land contained herein is held and shall be conveyed subject to any applicable restrictions, reservations and covenants now on file or hereafter filed in the Office of the Register of Deeds of Sedgwick County, Kansas.

State of Kansas }
County of Sedgwick } SS

This is to certify that this plat has been filed for record in the Office of the Register of Deeds this _____ day of _____, 2013, at _____ o'clock _____M, and is duly recorded.

Bill Meek, Register of Deeds

By: Lynn Rogers 1/11/13
Lynn Rogers, President Date
Unified School District #259

Tonya Buckingham, Deputy

Reviewed in accordance with K.S.A. 58-2005 on this _____ day of _____, 2013.

State of Kansas }
County of Sedgwick } SS



This instrument was acknowledged before me on this day of January 11, 2013, by Lynn Rogers, President, Unified School District #259.

Mike Willome
Notary Public

My Commission Expires: 4/9/15

Tricia L. Robello, L.S. #1246
Deputy County Surveyor
Sedgwick County, Kansas



1/9/13
Date: 1/9/13
516 S. Market, Wichita, KS 67202 (316)264-0242