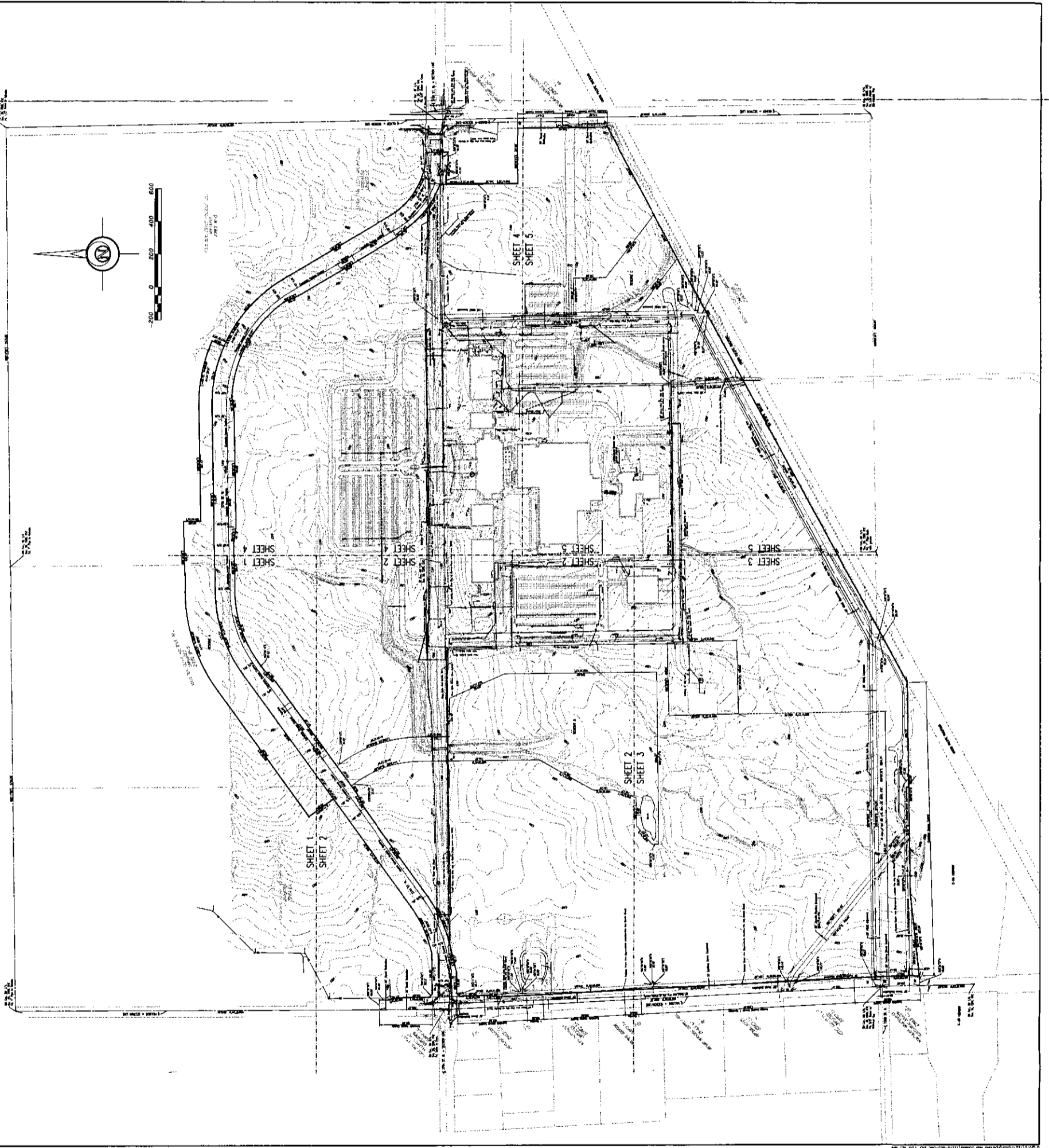


KOCH CAMPUS ADDITION
AN ADDITION TO WICHITA, SEDGWICK COUNTY, KANSAS
ONE STEP PLAT - KEY MAP



DATE: 11/11/03
DRAWN BY: [unreadable]
CHECKED BY: [unreadable]
SCALE: AS SHOWN
PROJECT NO.: [unreadable]