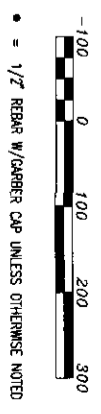
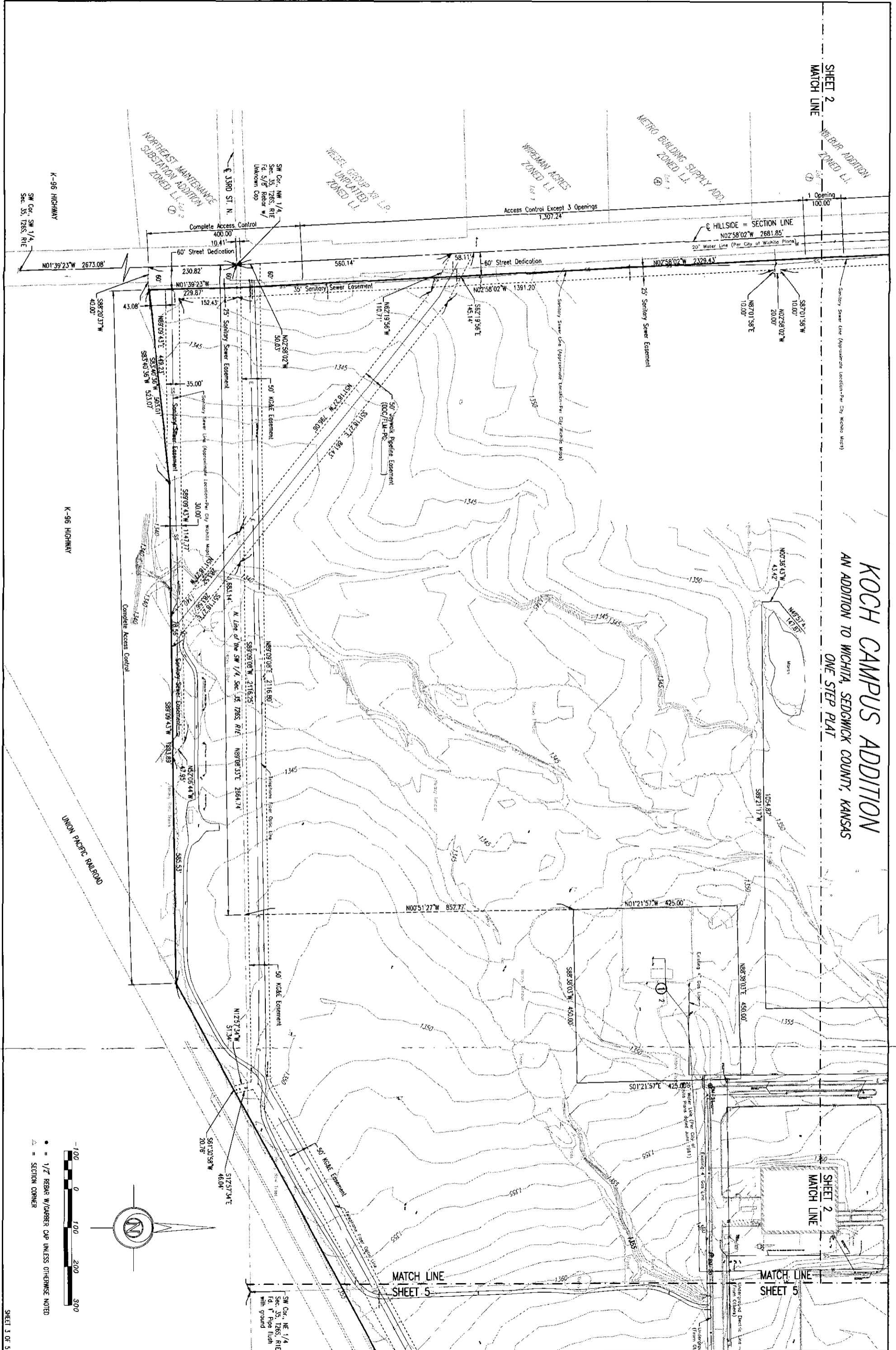


SHEET 2
 MATCH LINE

WILBUR ADDITION
 ZONED L.I.

KOCH CAMPUS ADDITION
 AN ADDITION TO WICHITA, SEDGWICK COUNTY, KANSAS
 ONE STEP PLAT

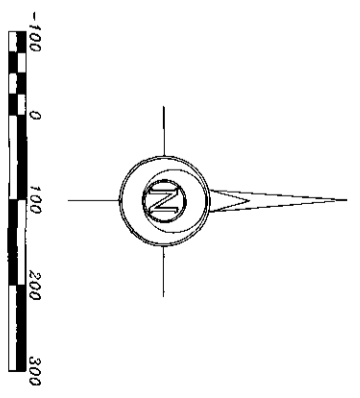
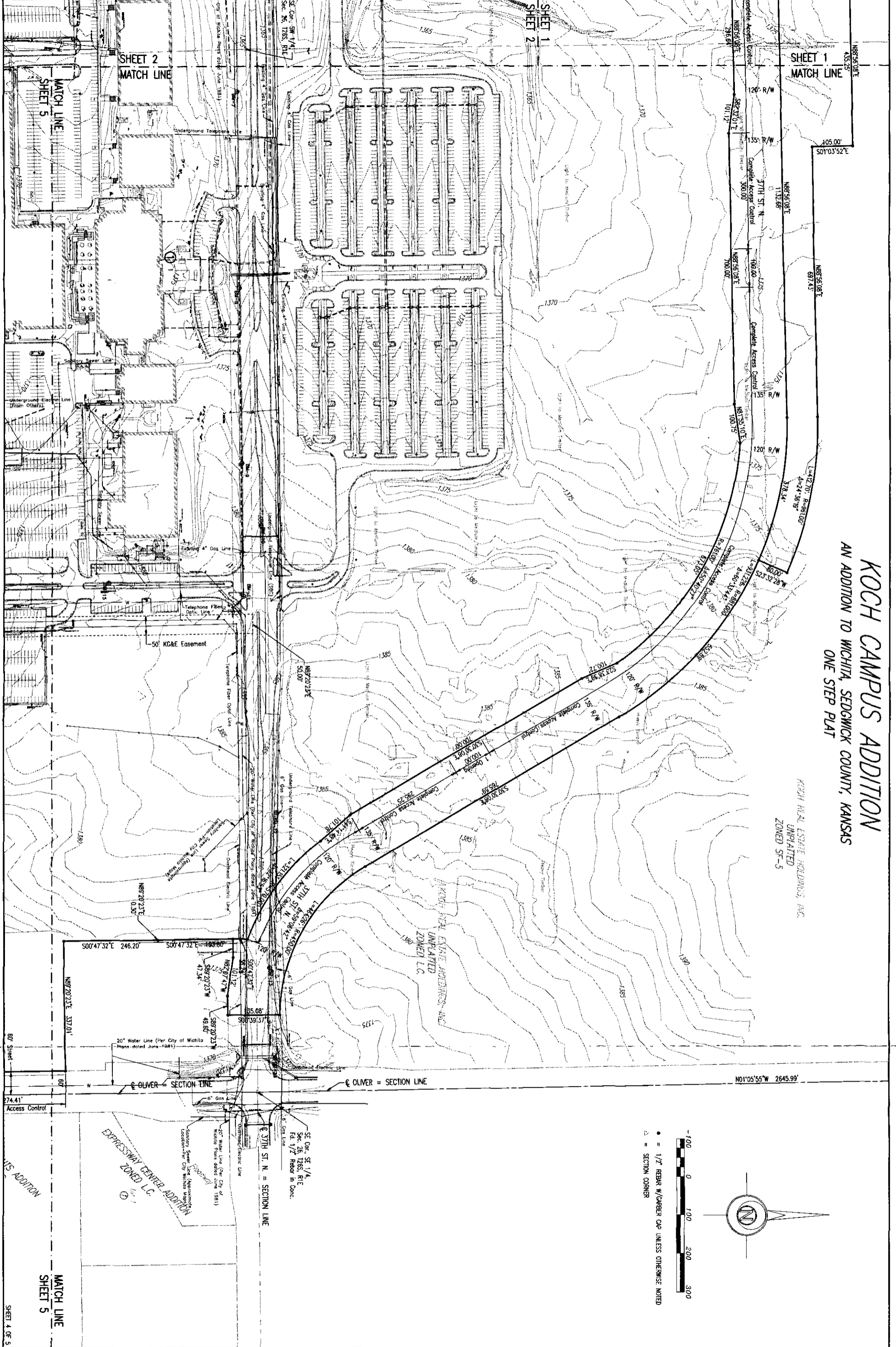


KOCH CAMPUS ADDITION

AN ADDITION TO WICHITA, SEDGWICK COUNTY, KANSAS
ONE STEP PLAT

KOCH REAL ESTATE HOLDINGS, INC.
UNPLATTED
ZONED SF-5

Drawn 02-07-2013 7:37:53 PM by JTS
Plot Scale 1:100 02-08-2013 11:56:51 AM by JTS
C:\A012\12275\005\PLATTING AND ZONING\12275-003-ONE STEP PLAT Sheet 4 of 5



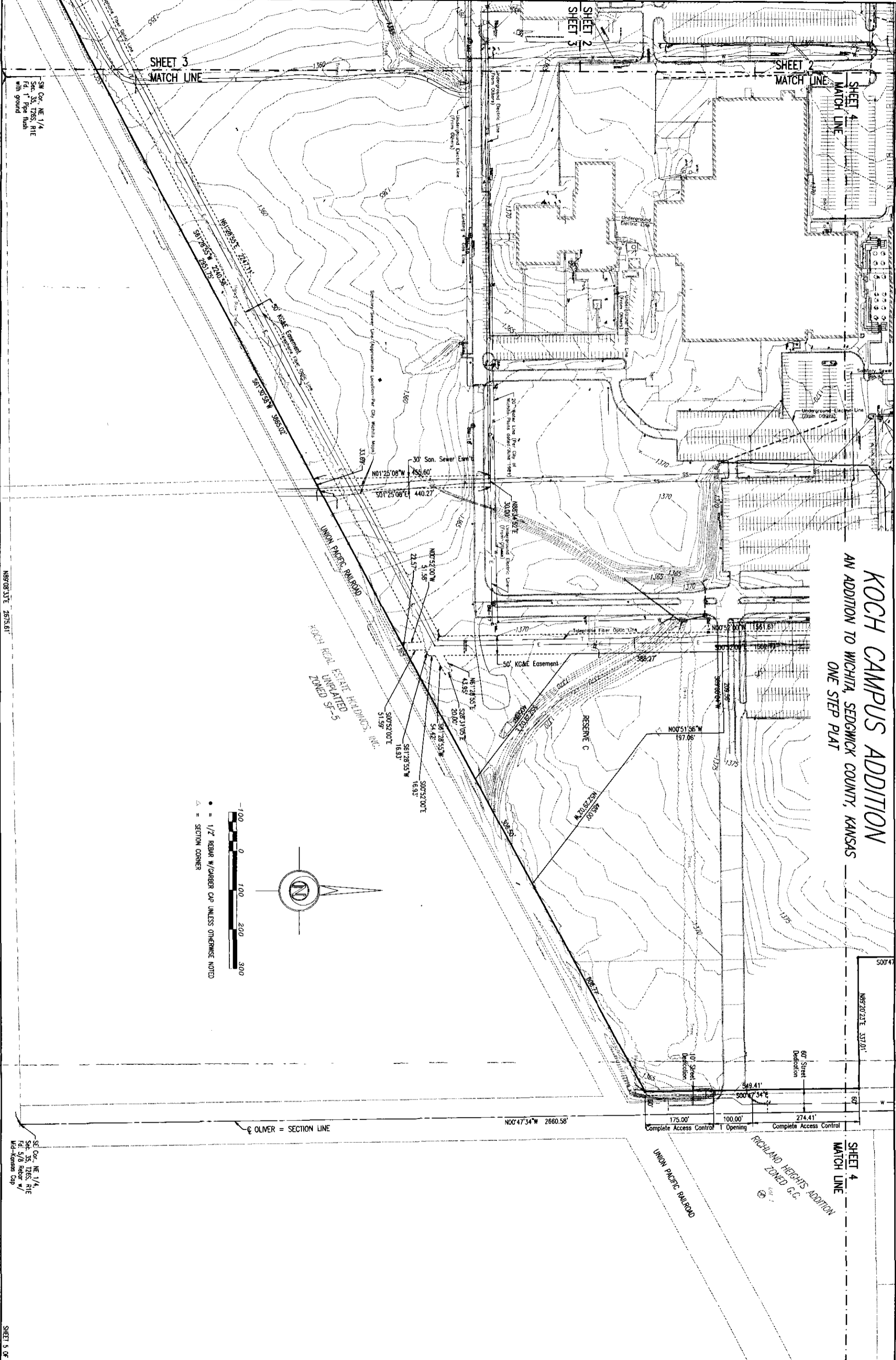
● = 1/2" REBAR W/ GAGES CAP UNLESS OTHERWISE NOTED
△ = SECTION CORNER

WIS ADDITION
MATCH LINE
SHEET 5
SHEET 4 OF 5

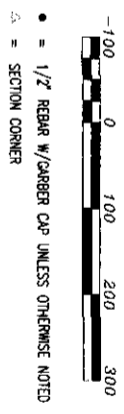
EXPRESSWAY CENTER ADDITION
ZONED L.C.

SE COR. SE 1/4
SEC. 26, T28S, R1E
TO 1/2 REBAR IN CONC.
6" GAS LINE
20" WATER LINE (PER CITY OF WICHITA
PLANS DATED JUNE 1981)
SECTION CORNER (BY APPROXIMATE
LOCATION - PER CITY OF WICHITA
WATER PLANS DATED JUNE 1981)

OLIVER = SECTION LINE
37TH ST. N. = SECTION LINE



KOCH CAMPUS ADDITION
 AN ADDITION TO WICHITA, SEDGWICK COUNTY, KANSAS
 ONE STEP PLAT



• = 1/2" REBAR W/ CARBER CAP UNLESS OTHERWISE NOTED
 △ = SECTION CORNER

△ OLIVER = SECTION LINE

SW Cor. NE 1/4,
 Sec. 35, T26S, R1E
 Pl. 1 Pipe Flush
 with ground

SW Cor. NE 1/4,
 Sec. 35, T26S, R1E
 Pl. 5/8 Rebar w/
 Mid-Kansas Cap