

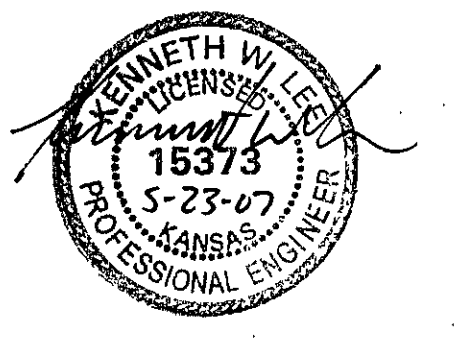


SCALE 1" = 120'

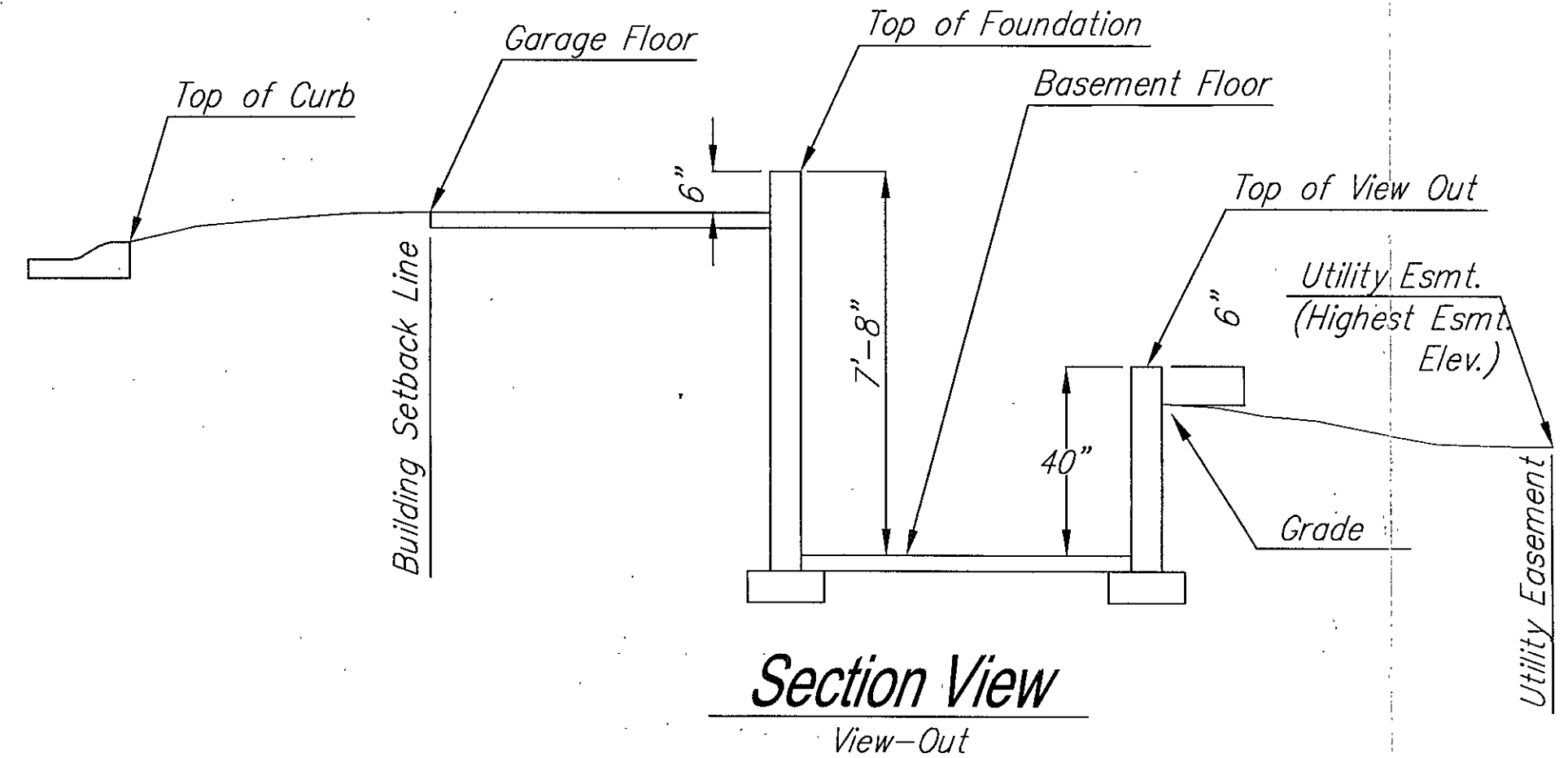
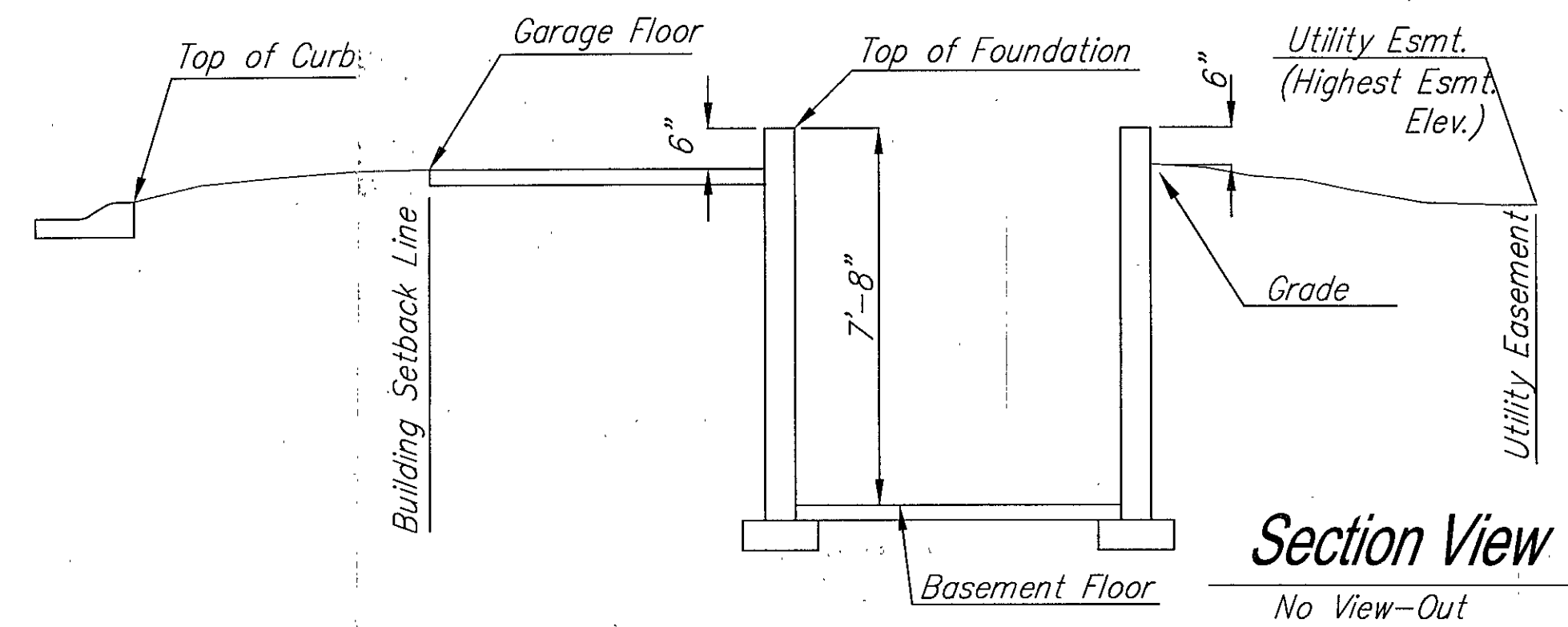
- (R) Garage Right
- (L) Garage Left
- (WO) Walk-Out Optional
- *

BENCH MARK #1: "□" ON SOUTH END HEADWALL 58.5± S OF NW COR. SEC. 26, T27, R2E. ELEV. 1308.79

BENCH MARK #3: RAILROAD SPK. WEST FACE OF POWER POLE 30± WEST OF EAST 1/4 COR. SEC. 26, T27, R2E. ELEV. 1314.88



APPROVED DRAINAGE PLAN

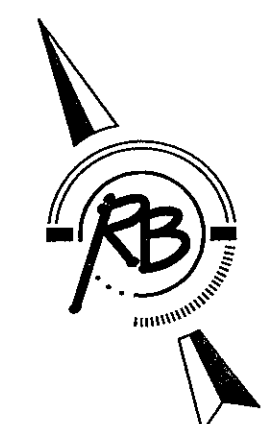
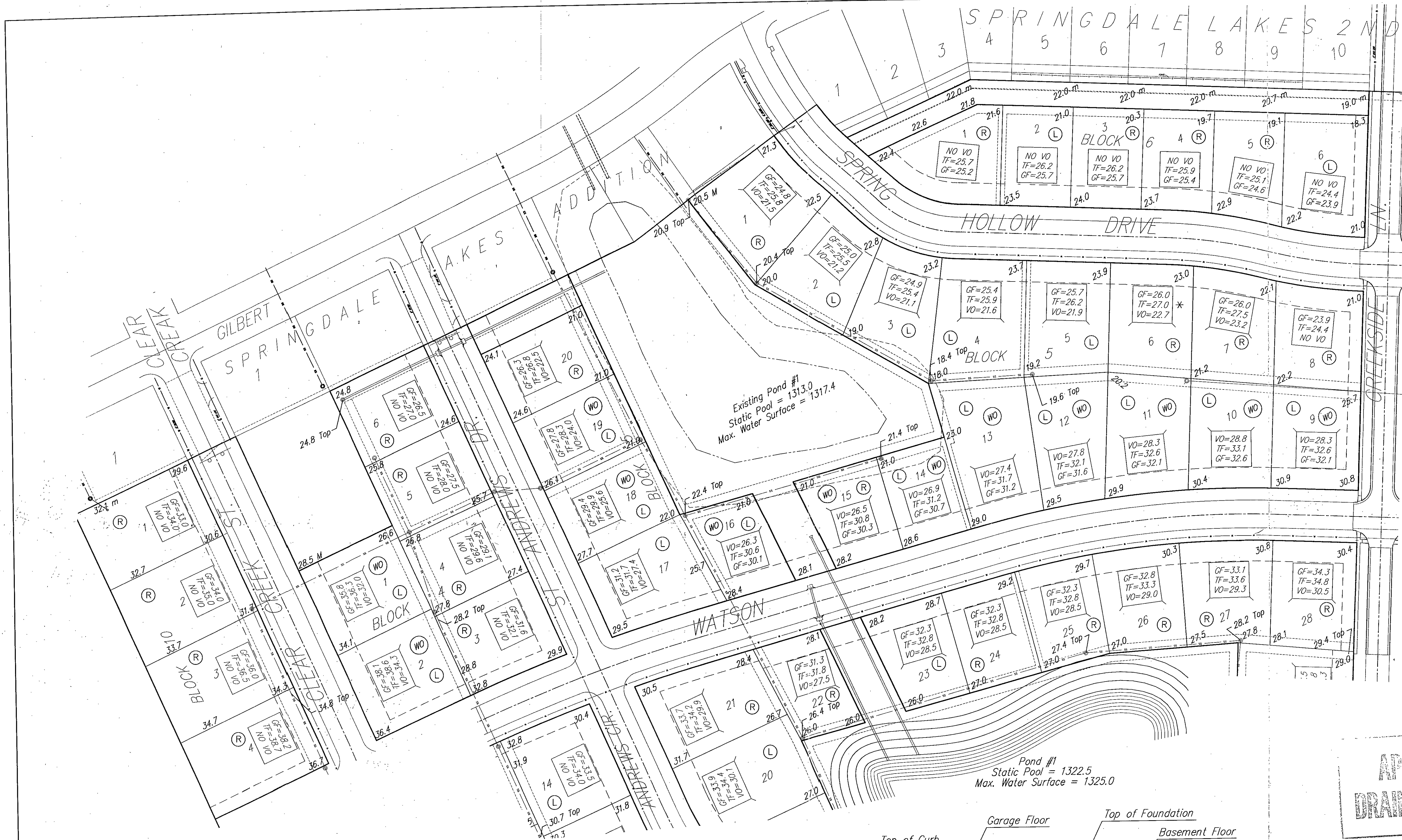


**CLEAR CREEK ADDITION
PHASE 2 GRADING PLAN
WICHITA, KANSAS**

Ruggles & Bohm, P.A.
Engineering, Surveying, Land Planning

924 North Main (316) 264-8008
Wichita, Kansas 67203 (316) 264-4621 fax
www.rbkansas.com E-mail: info@rbkansas.com

DRAWING FILE: Phase 2 Grading {Layout}
PROJECT NUMBER: [Blank]
DATE: Jan. 2, 2008



SCALE 1" = 60'

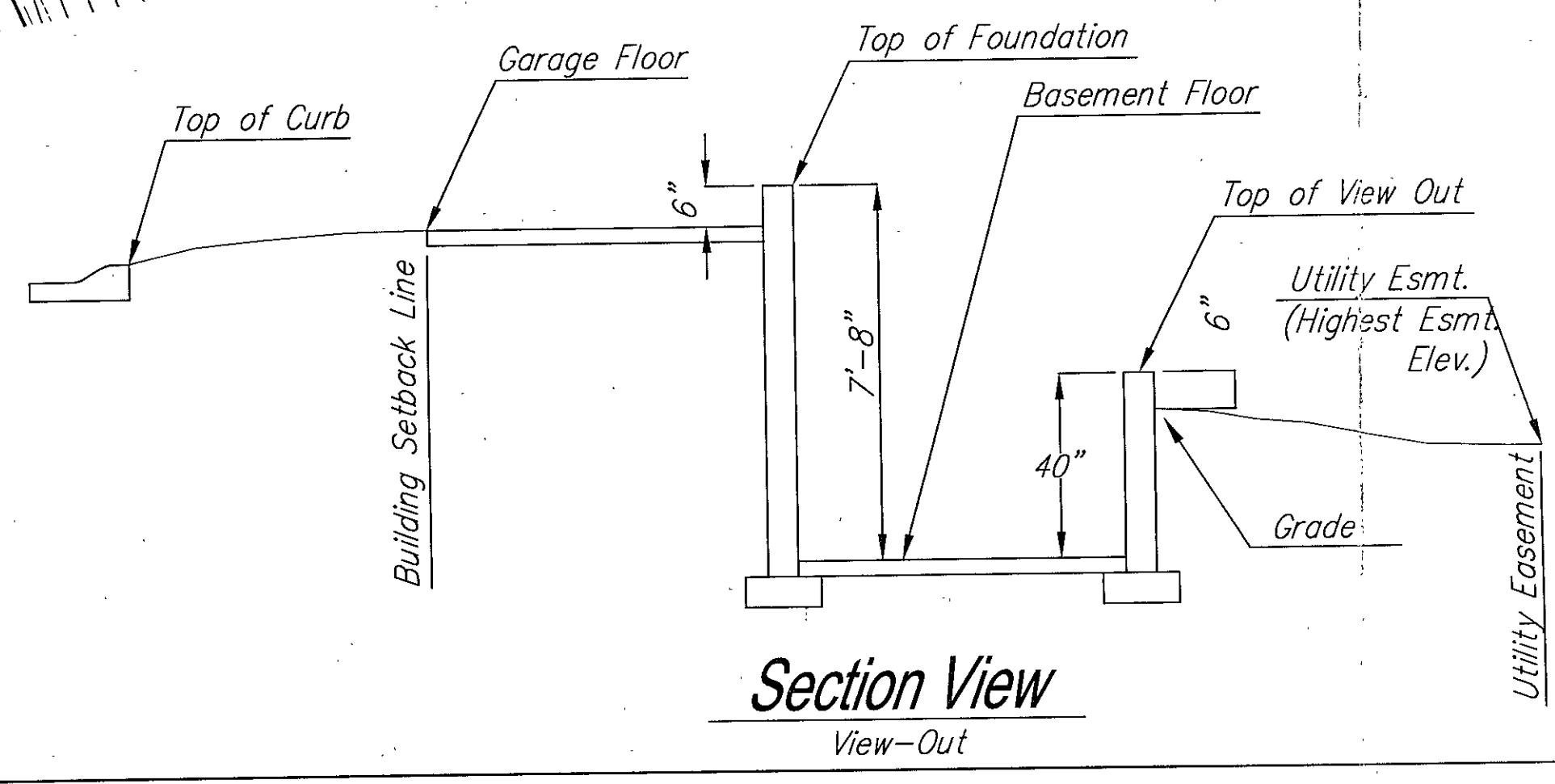
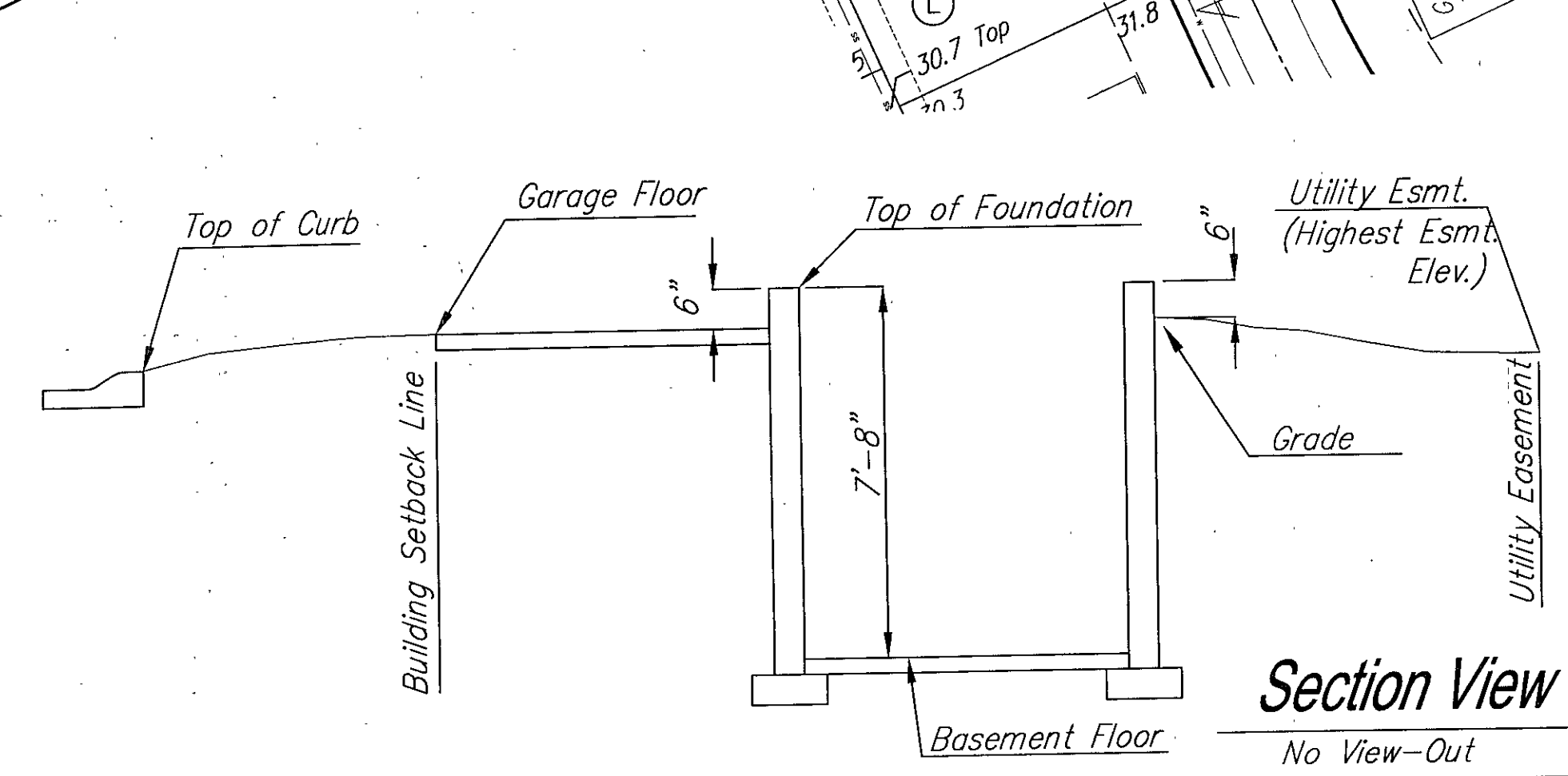
- (R) Garage Right Recommended
- (L) Garage Left Recommended
- (WO) Walk-Out Optional
- * Extra Steps Required for Viewout

BENCH MARK #1: "□" ON SOUTH END HEADWALL 58.5± S. OF NW COR. SEC. 26, T27, R2E. ELEV. 1308.79

BENCH MARK #3: RAILROAD SPK. WEST FACE OF POWER POLE 30± WEST OF EAST 1/4 COR. SEC. 26, T27, R2E. ELEV. 1314.88

NOTE: RIGHT AND LEFT DESIGNATIONS ARE RECOMMENDATIONS ONLY. BUILDER CAN VARY GARAGE ORIENTATIONS.

APPROVED DRAINAGE PLAN



REVISED: 7/30/07

CLEAR CREEK ADDITION PHASE 2 GRADING PLAN WICHITA, KANSAS

Ruggles & Bohm, P.A.
Engineering, Surveying, Land Planning

924 North Main (316) 264-8008
Wichita, Kansas 67203 (316) 264-4621 fax
www.rbkansas.com E-mail: info@rbkansas.com

DESIGN: KML
DRAWN: RA
REVIEW:
UTILITY:
DRAWING FILE: Phase 2 Grading {Layout}
PROJECT NUMBER:
DATE: Jan. 2,