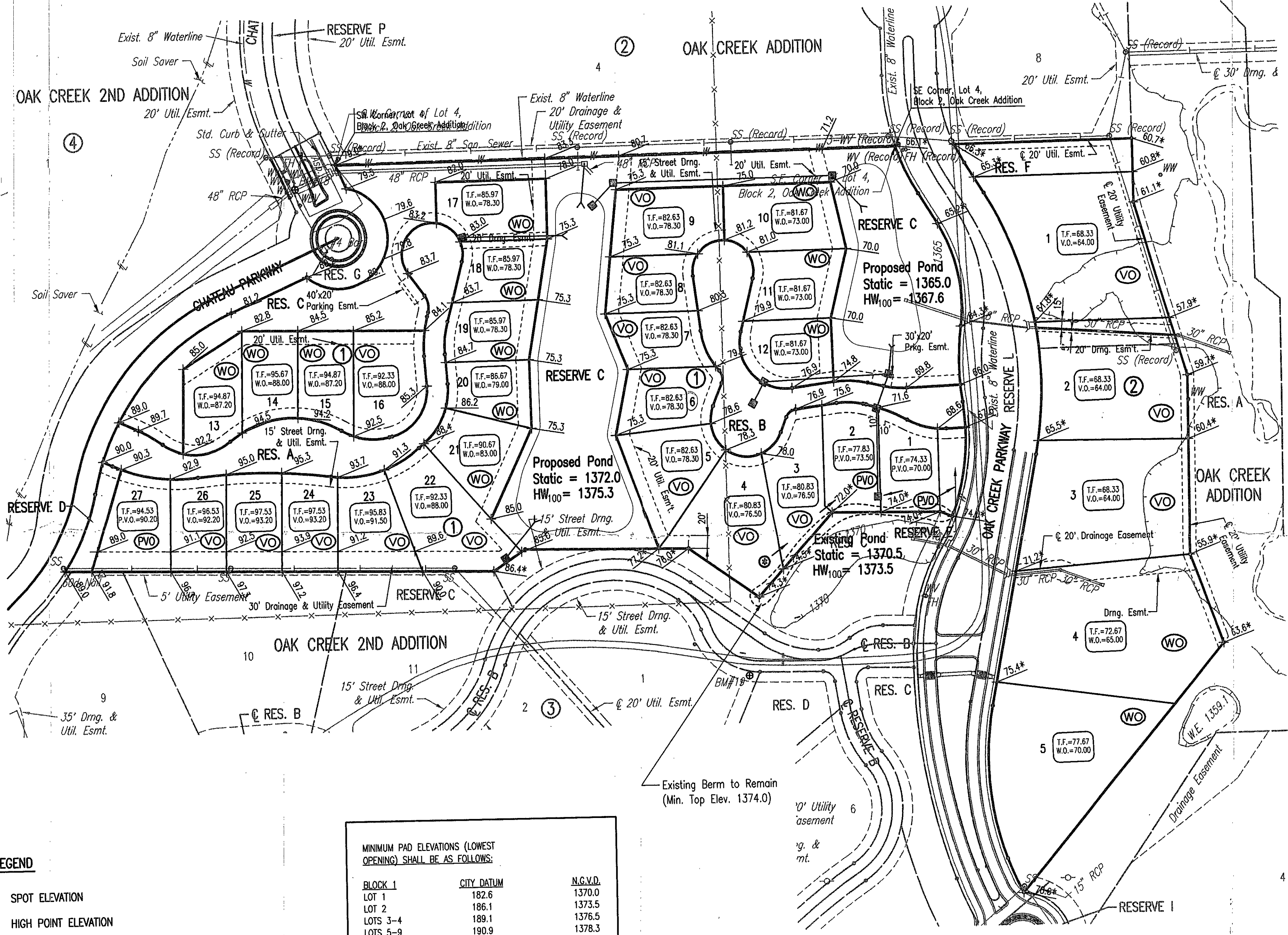


# OAK CREEK 3RD

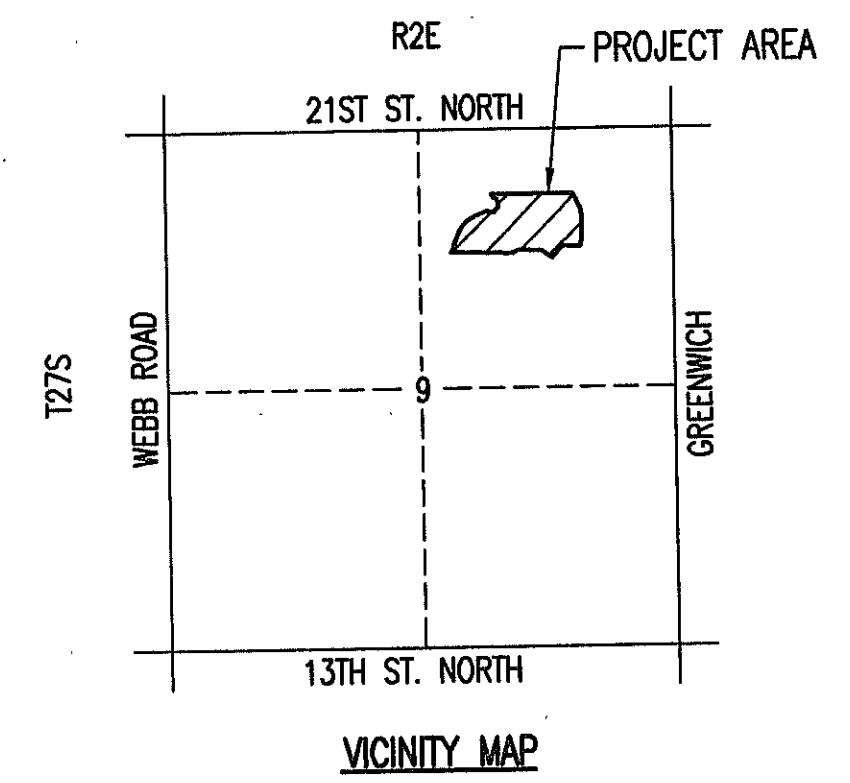
## AN ADDITION TO WICHITA, SEDGWICK COUNTY, KANSAS

### FOUR-CORNER PLAN



SCALE: 1" = 100'  
 • = 1/2" REBAR W/PEC CAP UNLESS OTHERWISE NOTED

**BENCHMARKS** BM  
 BM #209  
 Chiseled "d" on NW corner of traffic signal base, at SW corner of Greenwich Road & 21st Street North  
 Elev. = 1363.54 N.G.V.D.  
 176.14 City Datum  
 BM #215  
 Chiseled "d" in top center curb inlet 600' W of Greenwich Road on S side of 21st Street North.  
 Elev. = 1363.265 N.G.V.D.  
 175.865 City Datum  
 BM #216  
 Chiseled "d" on S end of curb & gutter at @ of Medion, Target entrance on N side of 21st Street North 1400' ± W of Greenwich Road.  
 Elev. = 1364.55 N.G.V.D.  
 177.15 City Datum



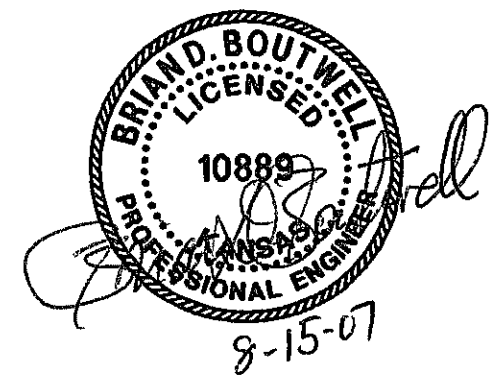
- LEGEND**
- $\pm 69.00$  SPOT ELEVATION
  - $\pm 69.00$  HP HIGH POINT ELEVATION
  - $\pm 69.00^*$  MATCH EXISTING ELEVATION
  - STORM SEWER AND INLET
  - STORM SEWER AND MANHOLE
  - VO VIEW-OUT BASEMENT
  - PVO VIEW-OUT BASEMENT
  - WO VIEW-OUT BASEMENT
- ADD 1300 TO ELEVATIONS FOR N.G.V.D. DATUM.

MINIMUM PAD ELEVATIONS (LOWEST OPENING) SHALL BE AS FOLLOWS:			
BLOCK	CITY DATUM	N.G.V.D.	
BLOCK 1	LOT 1	182.6	1370.0
	LOT 2	186.1	1373.5
	LOTS 3-4	189.1	1376.5
	LOTS 5-9	190.9	1378.3
	LOTS 10-12	182.6	1370.0
	LOTS 17-21	190.9	1378.3
BLOCK 2	LOTS 1-2	176.6	1364.0
	LOTS 3-4	175.6	1363.0

Ⓢ Backyard drainage protected by private cross-lot drainage agreement

Sheet 08 of 01-2007 1:25=50 PM by SW  
 Saved 08-11-2007 08:15:20 AM by BJS  
 C:\2004\04115\00A\LD0\04115-004-4-Corner

OAK CREEK 3RD



REVISED 10-5-06