

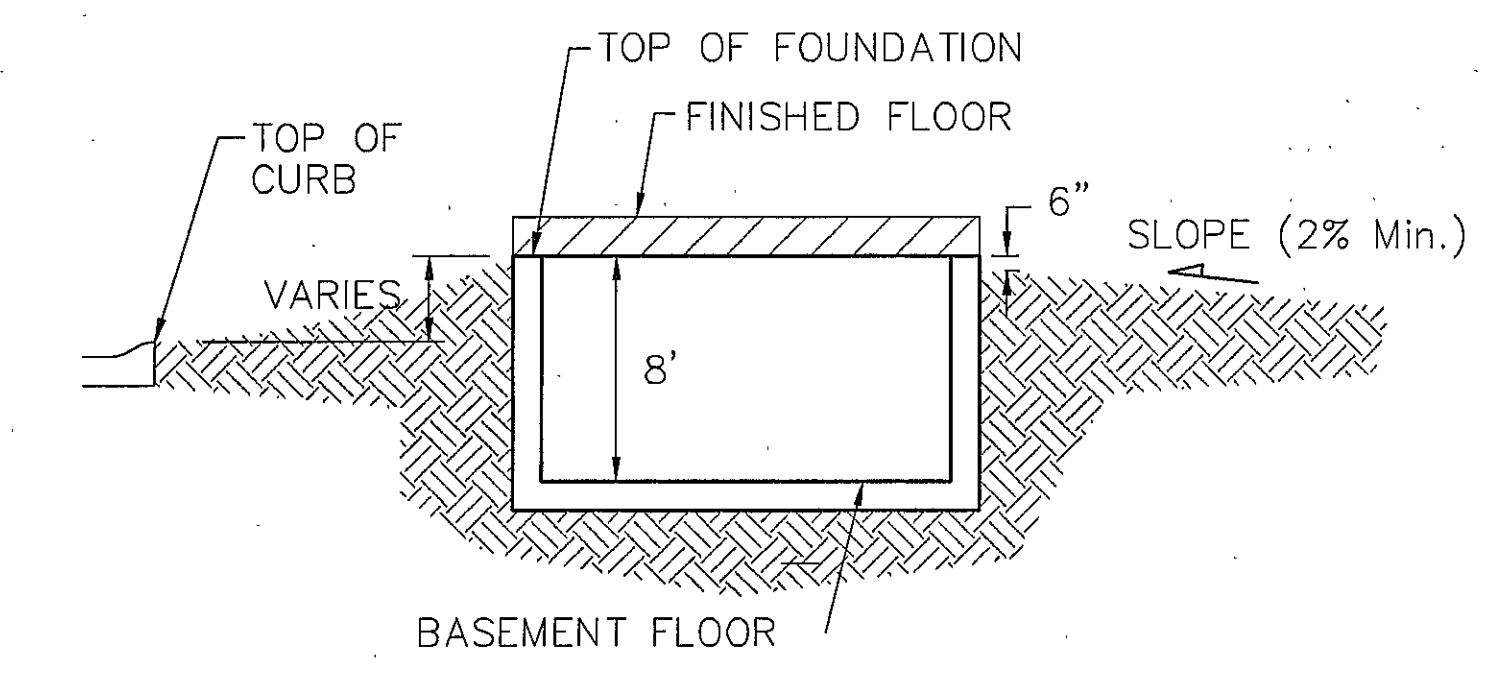
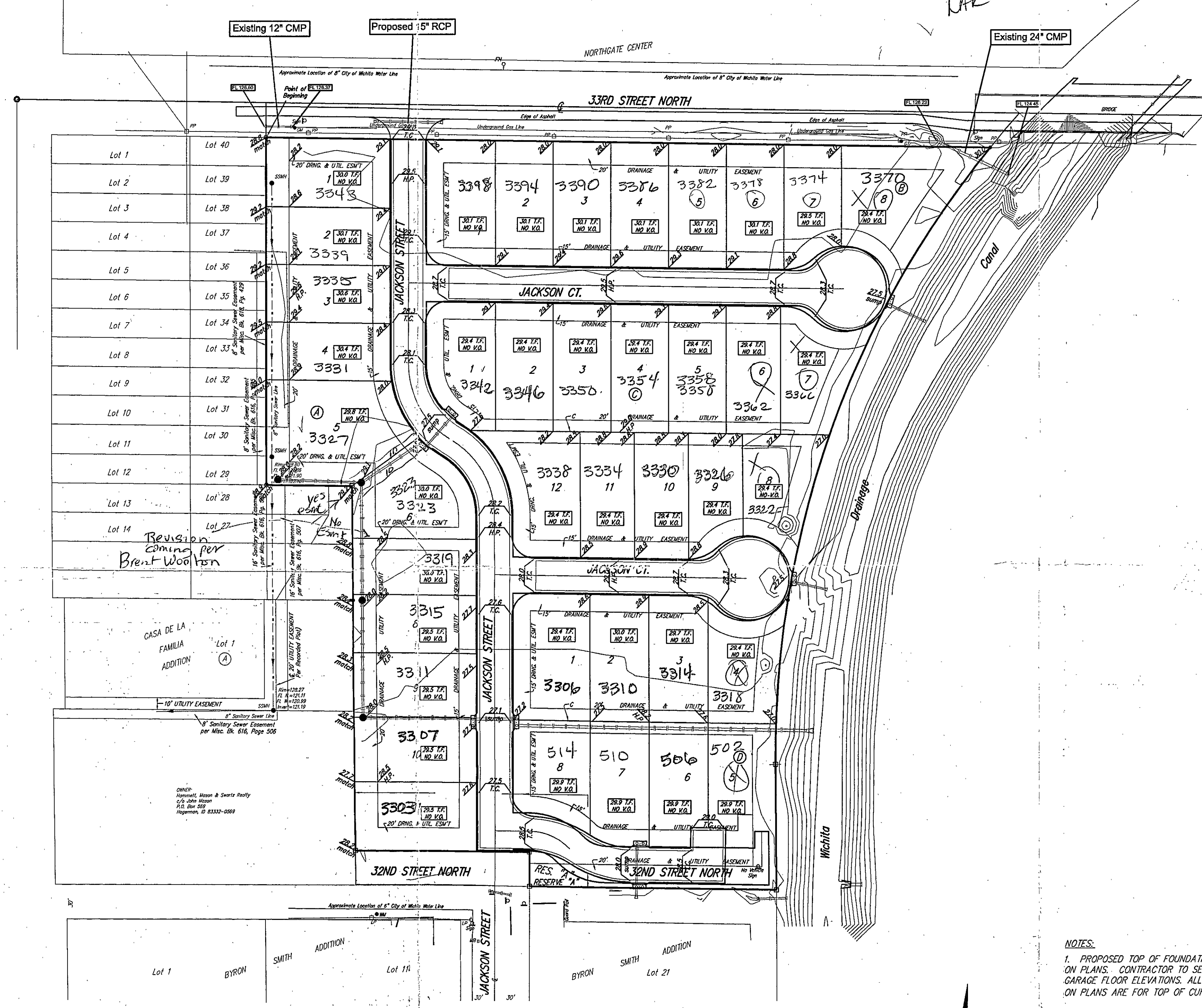
SAVINA  
5TH

8-9-07  
Floodway  
Fringe  
Clear Up  
with CMP  
before July  
1st, 2008.

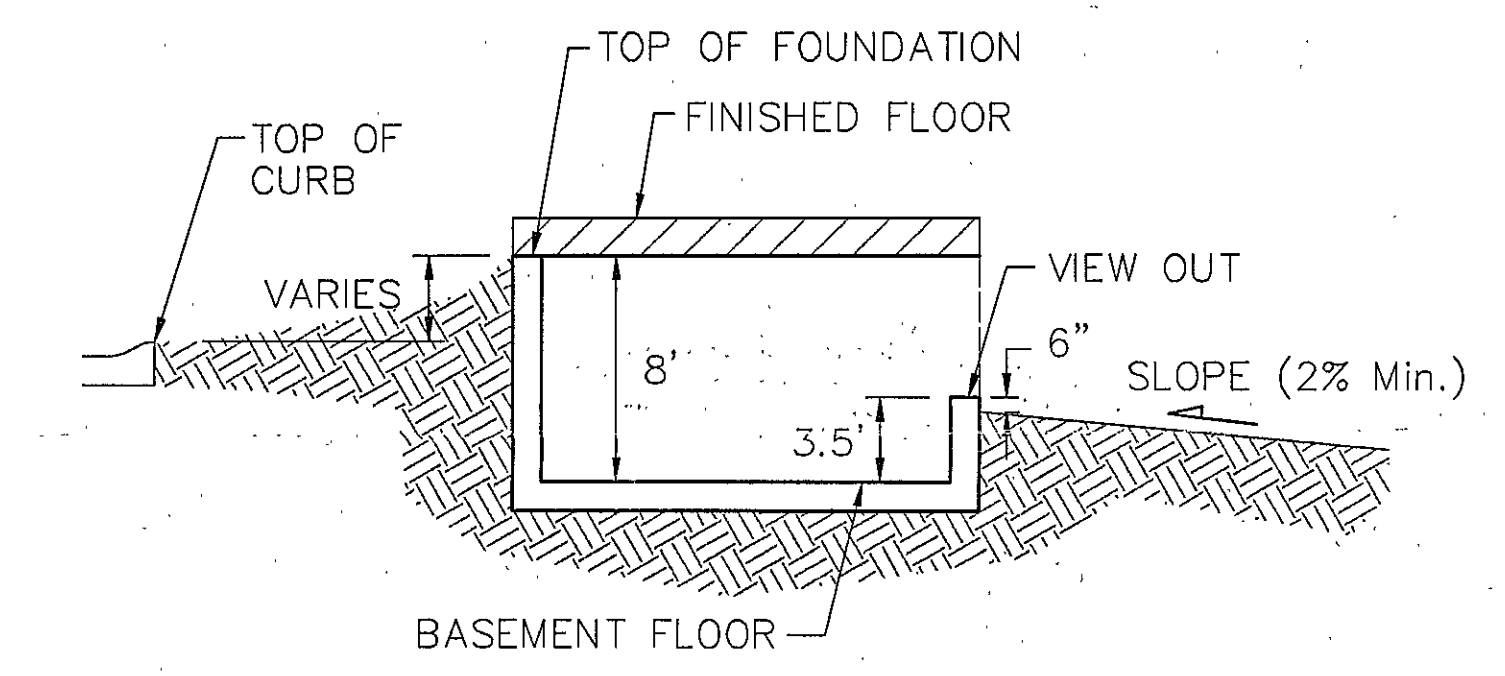
9-28  
SF in MFEA.

2/13/2008: Scott L. Sifton, Water  
Engineer has lifted  
the holds on lots  
adjacent to the  
dry canal due  
to current study  
to North.  
LAK

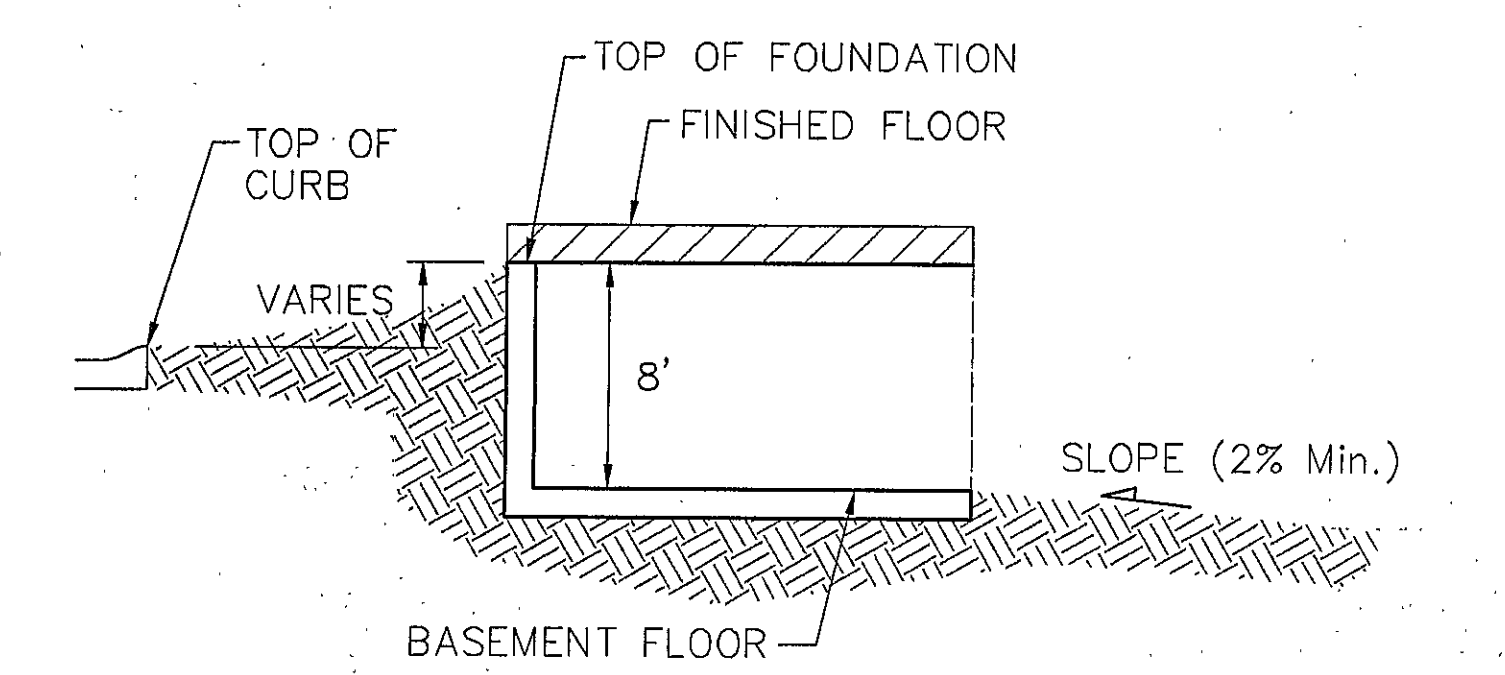
MASTER GRADING PLAN  
**SAVINA 5TH ADDITION**  
WICHITA, SEDGWICK COUNTY, KANSAS



TYPICAL NON-VIEW OUT DETAIL  
NO SCALE



TYPICAL VIEW OUT DETAIL  
NO SCALE



TYPICAL WALK OUT DETAIL  
NO SCALE

- NOTES:
1. PROPOSED TOP OF FOUNDATION ELEVATIONS ARE SHOWN ON PLANS. CONTRACTOR TO SET FINISHED FLOOR AND GARAGE FLOOR ELEVATIONS. ALL STREET ELEVATIONS SHOWN ON PLANS ARE FOR TOP OF CURB (FULL-HEIGHT).
  2. THIS GRADING PLAN IS DESIGNED WITH VIEW-OUTS AND WALK-OUTS. ELEVATIONS SHOWN AS XXX.XX. DEPICT VIEW-OUT STRUCTURES. ELEVATIONS SHOWN AS XXX.XX. DEPICT WALK-OUT STRUCTURES.
  3. LOT DIMENSIONS HAVE BEEN OMITTED ON THIS PLAN. REFER TO THE RECORDED PLAT FOR FINAL DIMENSION, EASEMENTS, & BUILDING SETBACK INFORMATION.
  4. A DRAINAGE PLAN HAS BEEN DEVELOPED FOR THIS SUBDIVISION AND IS ON FILE WITH THE CITY OF WICHITA, KANSAS. DRAINAGE INTENT SHALL REMAIN AS DEPICTED OR AS MODIFIED WITH THE APPROVAL OF THE CITY ENGINEER OF THE CITY OF WICHITA, KANSAS. NO OBSTRUCTIONS WHICH IMPED THE FLOW OF THIS DRAINAGE PLAN SHALL BE ALLOWED.
  5. NOTE: No FEMA SFHA exists on this property as of March 05 2007.

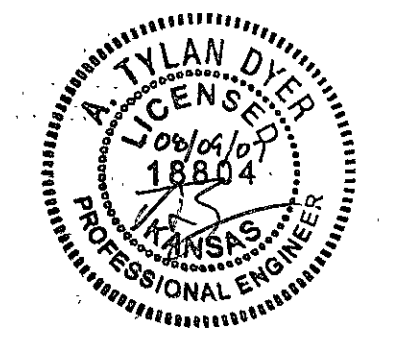
OWNER/DEVELOPER:  
WICHITA HABITAT FOR  
HUMANITY, INC.  
610 N. MAIN  
P.O. BOX 114  
WICHITA, KS 67201  
LINDA STEWART  
EXECUTIVE DIRECTOR  
PHONE: (316) 264 1108

LEGAL DESCRIPTION:  
A REPLAT OF LOT 1, SAVINA  
4TH ADDITION, WICHITA, KANSAS.

BENCHMARK:  
ARKANSAS AND 33RD ST.  
NORTH  
32.00 FT SOUTH OF CENTERLINE  
OF 33RD ST. CORNER EAST  
22.00 FT EAST OF CENTERLINE  
OF ARKANSAS  
ELEV= 1317.21 (NGVD 29)

COW DESK NE BRIDGE HEADWALL  
33RD AND DRAINAGE CANAL  
ELEV= 1320.98 (NGVD29)

SCALE: 1" = 60'  
• = Iron



<b>Baughman</b>		<b>GRAY'S 6TH ADDITION SUBDIVISION GRADING PLAN WICHITA, KANSAS</b>	
PROJECT NUMBER	DESIGN	DATE	BY
REVISIONS:	APPROVED	DATE	BY
	SCALE	DATE	BY
	1 OF 1		