

SOUTHWEST PASSAGE ADDITION

Wichita, Sedgwick County, Kansas

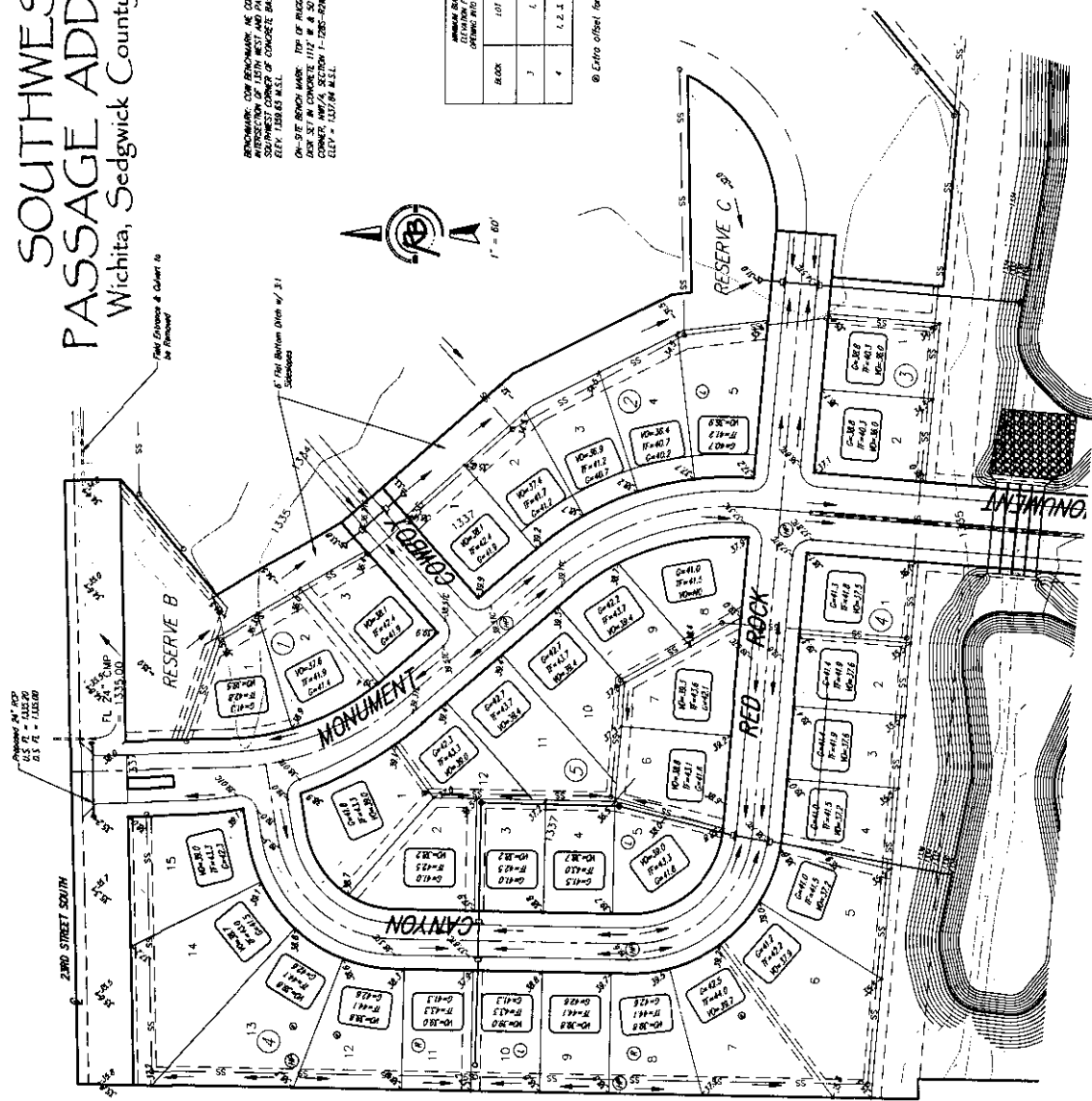
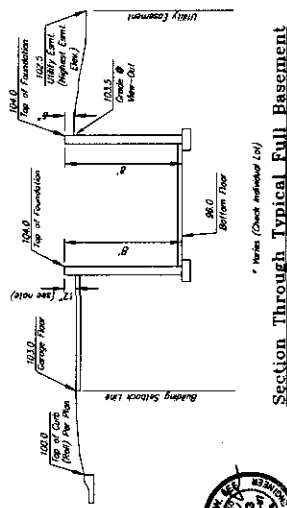
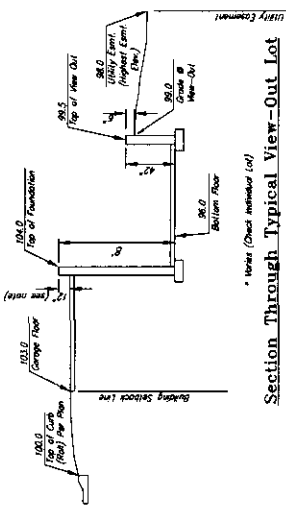
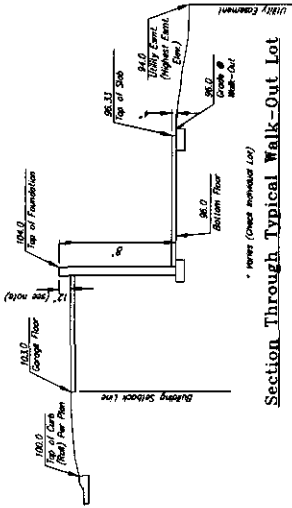
FILE CHANGES & CORRECT TO

REMARKS: CORRECTION TO CORNER
ADJUSTMENT OF 15TH WEST AND PARKWAY
SEEK 1286.83 N.E.S.L.
ON-SITE BENCH MARK: TOP OF BRICKS & ROOM BRICKS
DUMP SET IN CONCRETE 1112 IN A 30' S. OF THE N.E.
CORNER, NW/4 SECTION 1-1285-R20K
ELEV = 1202.04 N.E.S.L.



BEARING	DISTANCE	REMARKS
101.40	1.2	1.2, 1.4, 1.6, 1.8, 2.0
101.40	1.2	1.2, 1.4, 1.6, 1.8, 2.0
101.40	1.2	1.2, 1.4, 1.6, 1.8, 2.0

9 Extra offset for longer driveway



Ruggles & Bohm, P.A.
Engineering, Surveying, Land Planning
2400 North Main
Wichita, Kansas 67202
Phone: 620-261-1111
Fax: 620-261-1112
www.rugglesandbohm.com

5/5/08