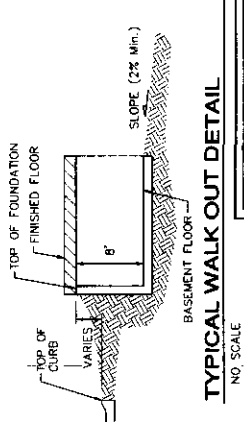
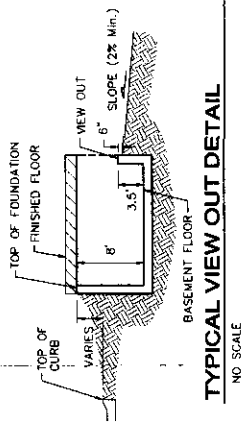
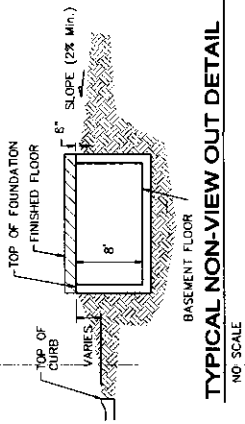
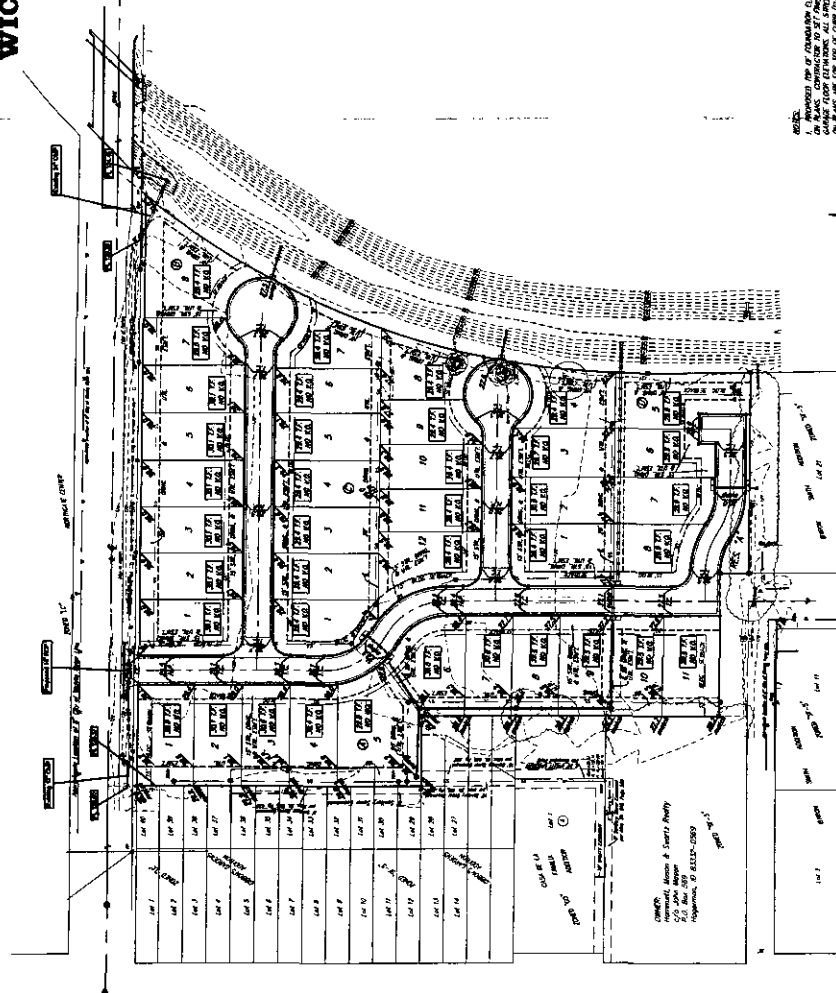


MASTER GRADING PLAN SAVINA 5TH ADDITION WICHITA, SEDGWICK COUNTY, KANSAS



OWNER: SAVINA 5TH ADDITION, WICHITA, KANSAS
 ARCHITECT: BRAUGHMAN ARCHITECTS, INC., WICHITA, KANSAS
 ENGINEER: WOODEN ENGINEERING, INC., WICHITA, KANSAS
 SURVEYOR: WOODEN ENGINEERING, INC., WICHITA, KANSAS
 DATE: 11/15/07
 SHEET: 1 OF 1



NOTES:
 1. ALL GRADING SHALL BE IN ACCORDANCE WITH THE CITY OF WICHITA, KANSAS, CHAPTER 22-100, AND THE KANSAS CONSTRUCTION CODE, CHAPTER 10-1-101.
 2. THE GRADING SHALL BE IN ACCORDANCE WITH THE CITY OF WICHITA, KANSAS, CHAPTER 22-100, AND THE KANSAS CONSTRUCTION CODE, CHAPTER 10-1-101.
 3. THE GRADING SHALL BE IN ACCORDANCE WITH THE CITY OF WICHITA, KANSAS, CHAPTER 22-100, AND THE KANSAS CONSTRUCTION CODE, CHAPTER 10-1-101.
 4. THE GRADING SHALL BE IN ACCORDANCE WITH THE CITY OF WICHITA, KANSAS, CHAPTER 22-100, AND THE KANSAS CONSTRUCTION CODE, CHAPTER 10-1-101.
 5. THE GRADING SHALL BE IN ACCORDANCE WITH THE CITY OF WICHITA, KANSAS, CHAPTER 22-100, AND THE KANSAS CONSTRUCTION CODE, CHAPTER 10-1-101.