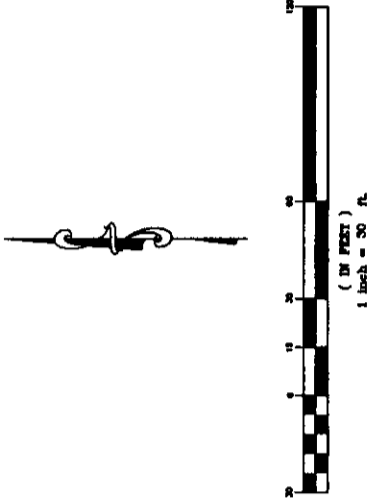


LOT GRADING PLAN LINWOOD ACRES 2nd ADDITION WICHITA, SEDGWICK COUNTY, KANSAS

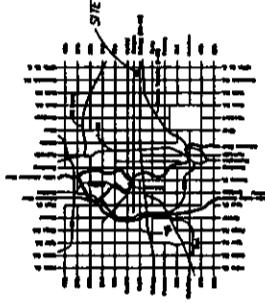
Part of the SW 1/4, Section 22, Township 27 South, Range 2 East of the 6th P.M.



Note: Extend 4" PVC from curb to 25' setback on Lots 1 & 2, and 3 feet onto private property on Lots 3-5. Pour concrete collar on west end of pipes.

- LEGEND**
- Fire Hydrant
 - Light Pole
 - Pine Tree
 - Power Pole
 - Telephone Pedestal
 - Tree
 - Water Meter
 - Water Valve
 - RW Marker (found)
 - 1/2" Iron Pin (found)
 - 5/8" Rebar (set) KEMPA CLS #157

Benchmark:
COW Bench mark 32' West a 38' North of Centerline of Zelita
and Douglas Intersection.
Elev. 1,357.29 MSL

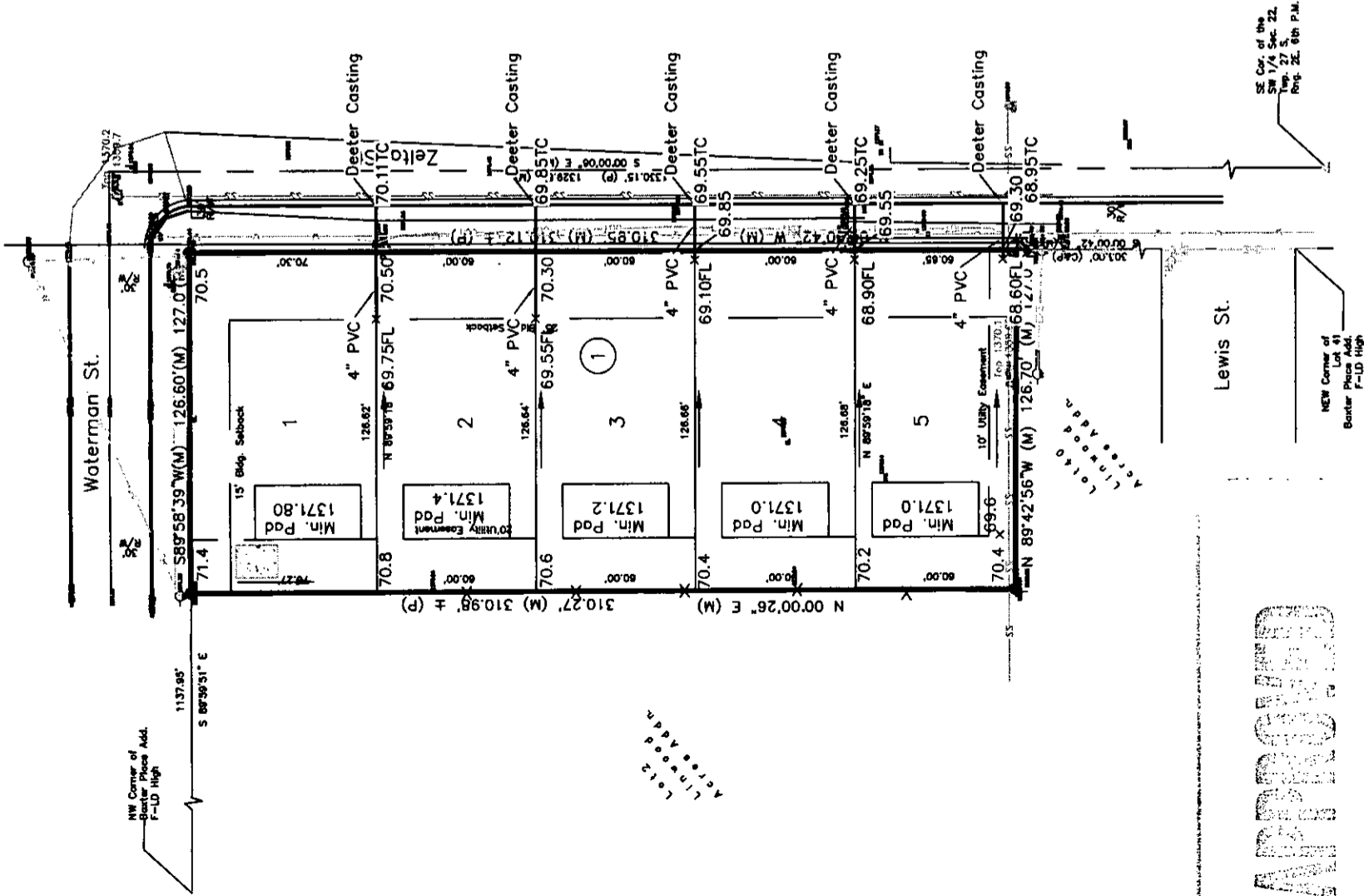


LOCATION MAP

Existing Site Drainage					
Block #	Area	To	CS	IS	0100
Proposed Plat	0.97	15. mh	0.33	4.50	0.63
			2.37		4.25/8

Proposed Site Drainage					
Block #	Area	To	CS	IS	0100
Proposed Plat	0.97	15. mh	0.67	4.50	0.29
			2.32		3.25/8

Engineer's Note:
Site drainage calculations developed using the Rational Method for peak runoff. "C", "I", & "S" values established from the City of Wichita Design Criteria and Documentation.



APPROVED

APPROVED

