

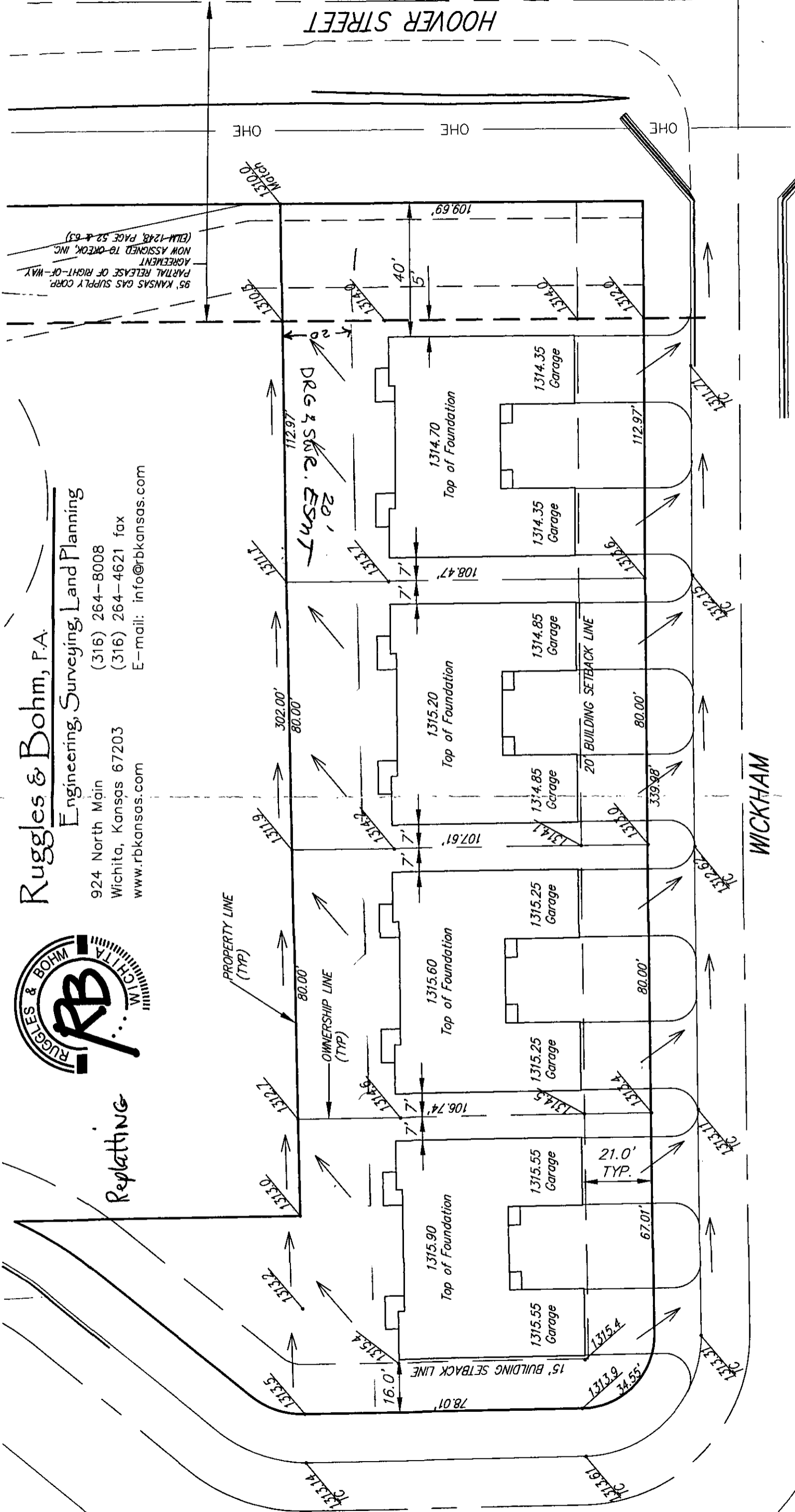


Ruggles & Bohm, P.A.

Engineering, Surveying, Land Planning

924 North Main (316) 264-8008  
Wichita, Kansas 67203 (316) 264-4621 fax  
www.rbkansas.com E-mail: info@rbkansas.com

Replating



95' KANSAS GAS SUPPLY CORP. PARTIAL RELEASE OF RIGHT-OF-WAY AGREEMENT NOW ASSIGNED TO OREOK, INC. (EIM-1248, PAGE 52 & 63)

Lot Grading Notes

- 1. The lot grades indicated on this Site Plan are based on the Approved Subdivision Lot Grading Plan.
2. Elevations at the property lines have been verified by an as-built survey. Top of Curb grades have been verified by an as-built survey.
3. Elevations on adjacent structures are not verified, and assumed to be in compliance with the Approved Subdivision Lot Grading Plan.
4. The structure grades indicated on this Site Plan may vary from those indicated on the Approved Subdivision Lot Grading Plan to fit this particular house plan.

- 5. The dimensions shown on this plan conform with the Platted building setbacks and easements for the house plans provided. It shall be the Builder's responsibility to ensure that the house as constructed conforms to these requirements and any easements or dedications not shown on the Recorded Plat. Any changes to this plan must be approved by the Developer and the Engineer.
6. Any discrepancy or error on this Site Plan noted by the Builder must be brought to the attention of Ruggles & Bohm P.A. prior to foundation construction. The plan is not a property survey and its sole purpose is to depict the proposed location and elevations of the home indicated on the plan.



3454P JUNE 12, 2009

SITE PLAN Lot 1, Block A Gray's 6th Addition Wichita, Kansas Page 1 of 1

Scale 1" = 30'