

BRENTWOOD SOUTH ADDITION

Wichita, Sedgwick County, Kansas
Phase 4 Grading Plan

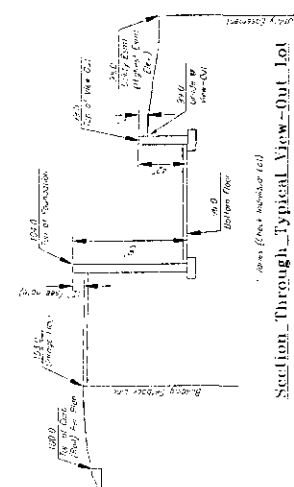
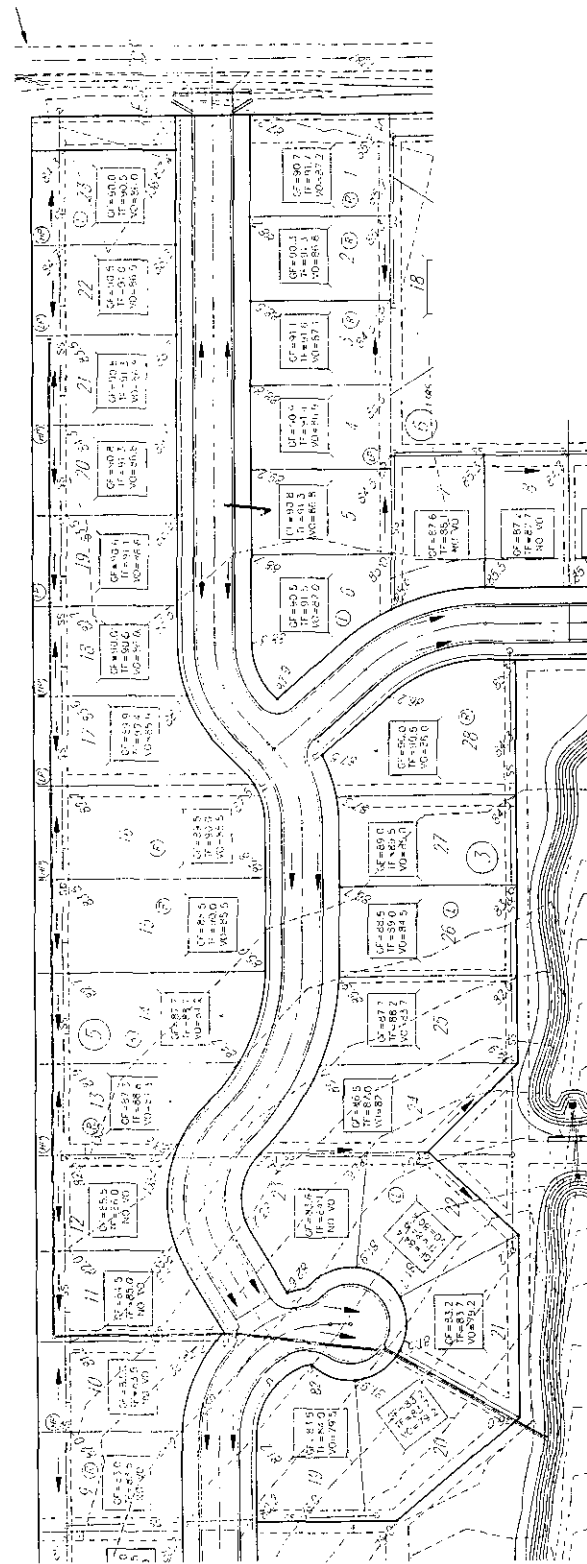


SCALE 1" = 50'

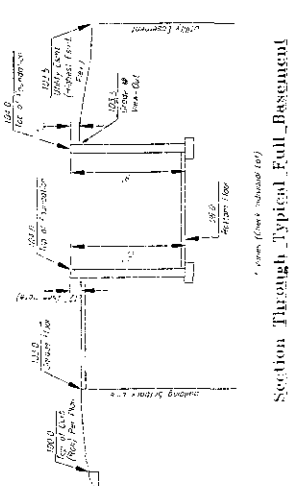
ENGINEER: RUGGLES & BOHM, P.A.
 1011 N. W. 10th St., Suite 100
 Wichita, Kansas 67202
 PHONE: 313-261-2200
 FAX: 313-261-2201
 WWW: www.rugbles.com

- GP - Grading Plan
- R - Top of Reinforcing
- TO - Top of Slab
- CC - Center Line
- CR - Center Right
- LR - Long Line Required

ZONE	DATE	DESCRIPTION
1	1.2	REVISION
2	1.2.2.3.5.6	REVISION



Section Through Typical View - Out Lot



Section Through Typical Full Basement

REVISED:
10/23/2007

Ruggles & Bohm, P.A.
 Engineering, Surveying, Land Planning
 1011 N. W. 10th St., Suite 100
 Wichita, Kansas 67202
 Phone: 313-261-2200
 Fax: 313-261-2201
 www.rugbles.com