

**CERTIFICATE OF SURVEY**

I, Gregory J. Allison, a registered land surveyor in Kansas, do hereby certify that I have been in responsible charge of surveying and platting of "QUIKTRIP 12TH ADDITION" an addition to Wichita, Sedgwick County, Kansas, into Lots, and a Block, the same being accurately set forth in the accompanying plat and described herein:

Lots 25 thru 36, inclusive, Block 1, Orme & Phillips Addition, to the City of Wichita, TOGETHER WITH, the North 8 feet of the vacated street adjacent on the South, in Sedgwick County, Kansas, TOGETHER WITH, Lots 8, 10, 12, 14, 16, 18, 20, 22, and 24, on Lawrence Avenue, now Broadway Avenue, and Lots 7, 9, 11, 13, 15, 17, 19, 21, and 23, on Topeka Avenue, in Block 1, Orme and Phillips Addition to the City of Wichita, in Sedgwick County, Kansas, EXCEPT that part of said Lots 8, 10, 12, 14, and 16, on Lawrence Avenue, now Broadway Avenue, described as follows: BEGINNING at the Northeast corner of said Lot 8; thence S00°46'04"E, 13.07 feet on an assumed bearing along the East line of said Lot 8; thence N89°09'34"W, 120.12 feet; thence S07°04'31"W, 117.22 feet to a point on the South line of said Lot 16, on Lawrence Avenue, now Broadway Avenue, said point being 4.00 feet East of the Southwest corner of said Lot 16; thence S88°53'57"W, 4.00 feet along the South line of said Lot 16; thence N00°46'12"E, 125.03 feet along the West line of said Lot 16, to the Northwest corner of said Lot 8; thence N88°53'57"E, 140.07 feet along the North line of said Lot 8 to the POINT OF BEGINNING, AND EXCEPT that part of Lot 7, on Topeka Avenue, described as follows: BEGINNING at the Northeast corner of said Lot 7, thence S00°45'56"E, 18.50 feet on an assumed bearing along the East line of said Lot 7; thence N89°09'34"W, 140.13 feet to a point on the West line and 13.75 feet South of the Northwest corner of said Lot 7; thence N00°46'04"W, 13.75 feet to the POINT OF BEGINNING, TOGETHER WITH, the south 17.00 feet of the North 25.00 feet of Orme Street right-of-way lying West of Topeka Avenue and East of Broadway Avenue.

All streets, alleys, easements, rights-of-way, building setbacks, access controls, together with all other public dedications within the above described property, are hereby vacated and replatted by virtue of K.S.A. 12-512b.

I hereby certify that the details of this plat are correct to the best of my knowledge and belief this \_\_\_ day of \_\_\_, 2012.

Gregory J. Allison, PE, LS #1257  
MKEC Engineering Consultants, Inc.  
411 North Webb Road  
Wichita, Kansas 67206

**OWNER'S CERTIFICATE**

Know all men by these presents that we the undersigned property owners of the land above set forth in the Registered Land Surveyor's Certificate, have caused the same to be surveyed and platted into Lots, and a Block, the same to be known as "QUIKTRIP 12TH ADDITION" an addition to Wichita, Sedgwick County, Kansas.

All abutters rights of access to or from Broadway Avenue over and across the west line of "QUIKTRIP 12TH ADDITION," are hereby granted to the appropriate governing body, as indicated hereon. All abutters rights of access to or from Kellogg Drive over and across the north line of "QUIKTRIP 12TH ADDITION," are hereby granted to the appropriate governing body, as indicated hereon. All abutters rights of access to or from Topeka Avenue over and across the east line of "QUIKTRIP 12TH ADDITION," are hereby granted to the appropriate governing body, as indicated hereon. All abutters rights of access to or from Orme Street over and across the south line of "QUIKTRIP 12TH ADDITION," are hereby granted to the appropriate governing body, as indicated hereon.

Easements for the construction and maintenance of public utilities and drainage, as indicated hereon, are hereby granted to the public.

A drainage plan has been developed for this plat. All drainage easements, rights-of-way, or reserves shall remain at established grades or as modified with the approval of the applicable City or County Engineer, and unobstructed to allow for the conveyance of stormwater.

QuikTrip West, Incorporated

Chad M. Stanford, Vice President

STATE OF OKLAHOMA, TULSA COUNTY} ss:

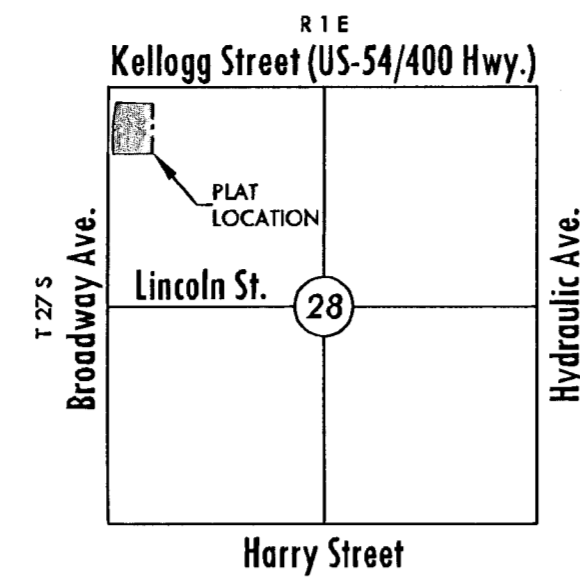
This instrument was acknowledged before me on \_\_\_ day of \_\_\_, 2012, by Chad M. Stanford, Vice President, QuikTrip West, Incorporated.

IN WITNESS WHEREOF, I have hereunto set my hand and affixed my official seal, the day and year last above written.

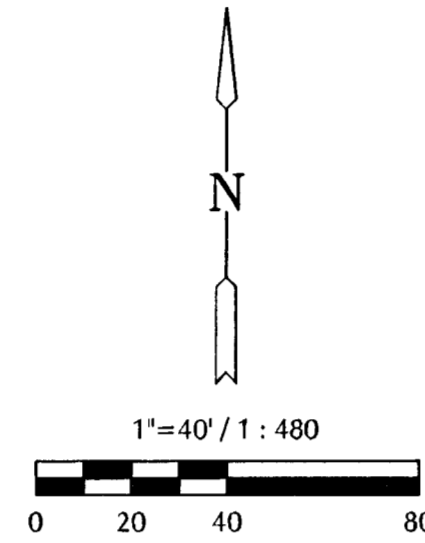
SEAL

\_\_\_\_\_, Notary Public

My Term Expires: \_\_\_\_\_



**VICINITY MAP**



Basis of Bearing: Kansas coordinate system of 1983 south zone grid bearing of S00°46'22"E along the W. line of NW ¼, Sec. 28, T27S, R1E, 6th P.M.

This plat is surveyed and platted on NAVD88-09 using Kansas state plane south zone coordinates, modified to the surface, having a combined adjustment scale factor of 1.000120014401728

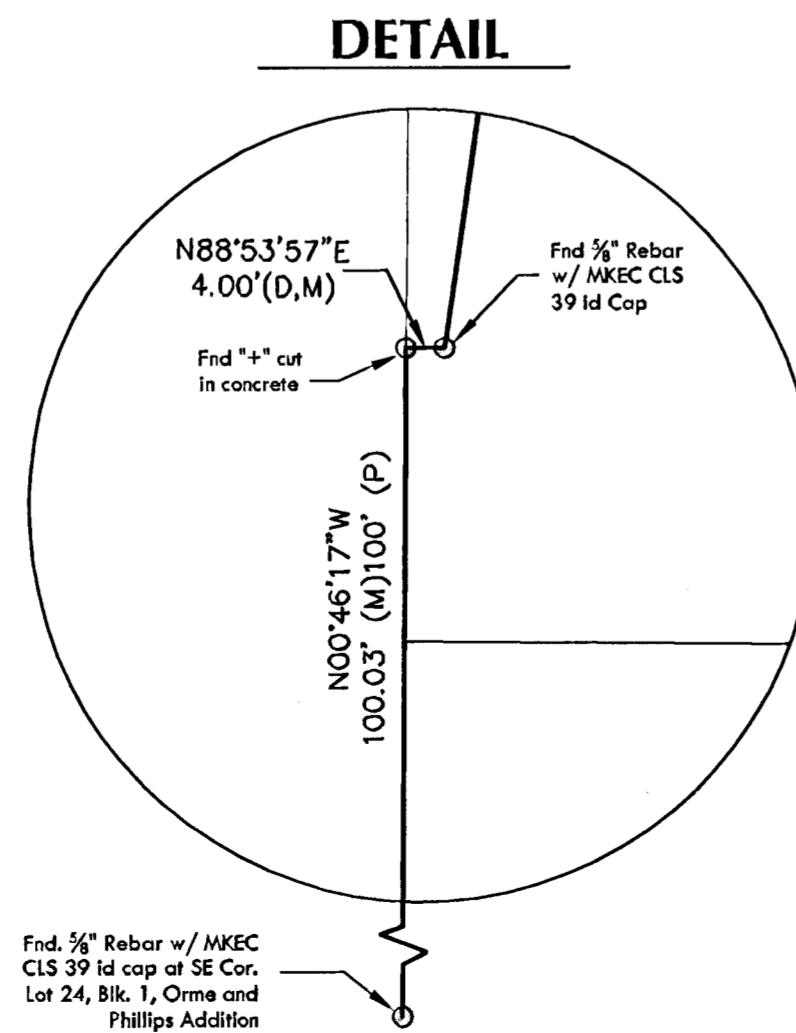
**BENCHMARK**

BM - Chiseled square cut on southwest corner of concrete traffic signal pole base on Southeast corner of Kellogg and Broadway (Northwest corner of site). Elev. = 1295.41 NAVD 88.

**LEGEND**

Date of Survey: March, 2012

- △ = Section Corner Monument Found
- = Found survey monument see annotation for type
- = Set 3/8" rebar w/ MKEC CLS 39 id. cap
- (M) = Measured
- (C) = Calculated from measured
- (D) = Described
- (P) = Platted
- ▨ = 17' Vacated Street RW

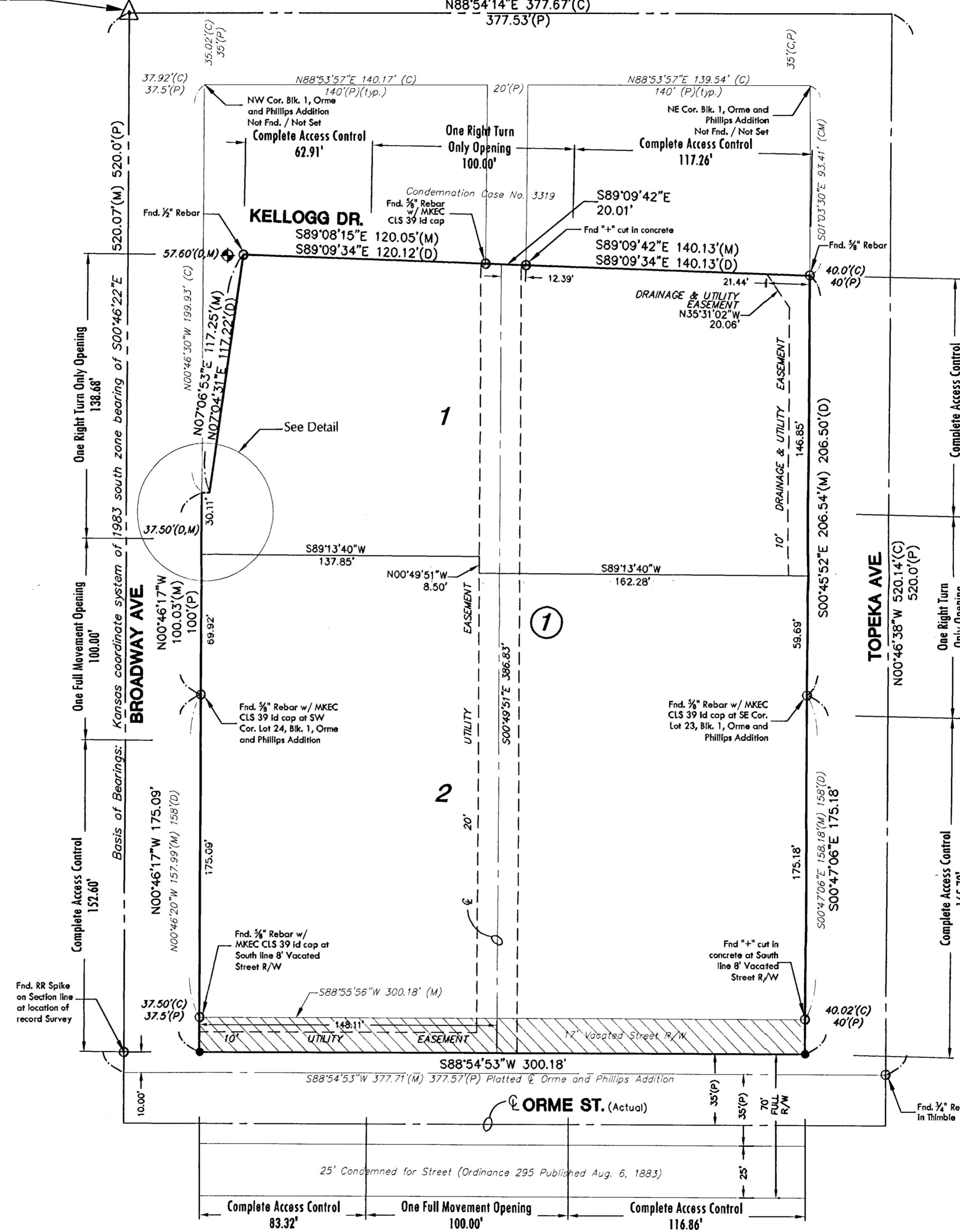


FINAL TRACING REC'D 3-5-13

PW-ENGINEERING 1-71  
Kim Pelton  
FOR YOUR FILES

**FINAL PLAT**  
**QUIKTRIP 12TH ADDITION**  
AN ADDITION TO WICHITA, SEDGWICK COUNTY, KANSAS

NW cor., NW ¼, Sec. 28, T27S, R1E, 6th P.M.  
Fnd. 3/8" Rebar w/ MKEC CLS 39 id cap



25' Condemned for Street (Ordinance 295 Published Aug. 6, 1883)

Complete Access Control 83.32' One Full Movement Opening 100.00' Complete Access Control 116.86'

**PLANNING COMMISSION CERTIFICATE**

This plat of "QUIKTRIP 12TH ADDITION" has been submitted to and approved by the Wichita-Sedgwick County Metropolitan Area Planning Commission, Wichita, Kansas.

Dated this \_\_\_ day of \_\_\_, 2012

WICHITA-SEDGWICK COUNTY METROPOLITAN AREA PLANNING COMMISSION

\_\_\_\_\_, Chair  
David Dennis, Chair

Attest: \_\_\_\_\_, Secretary  
John L. Schlegel, Secretary

**GOVERNING BODY CERTIFICATE**

The dedications shown on this plat are hereby accepted and this plat is hereby approved by the governing body of the City of Wichita, Kansas.

Dated this \_\_\_ day of \_\_\_, 2013

At the direction of the City Council.

\_\_\_\_\_, Mayor  
Carl Brewer, Mayor

Attest: \_\_\_\_\_, City Clerk  
Karen Sublett, City Clerk

**TRANSFER RECORD**

STATE OF KANSAS, SEDGWICK COUNTY} ss:

Entered on transfer record this \_\_\_ day of \_\_\_, 2013

\_\_\_\_\_, County Clerk  
Kelly B. Arnold, County Clerk

**REGISTER OF DEEDS' CERTIFICATE**

STATE OF KANSAS, SEDGWICK COUNTY} ss:

This is to certify that this instrument was filed for record in the Register of Deeds office this \_\_\_ day of \_\_\_, 201\_\_\_ at \_\_\_ o'clock \_\_\_M; and is duly recorded.

\_\_\_\_\_, Register of Deeds  
Bill Meek, Register of Deeds

Attest: \_\_\_\_\_, Deputy  
Tonya E. Buckingham, Deputy

**COUNTY SURVEYOR**

STATE OF KANSAS, SEDGWICK COUNTY} ss:

Reviewed in accordance with K.S.A. 58-2005 on this \_\_\_ day of \_\_\_, 201\_\_\_

\_\_\_\_\_, Deputy County Surveyor  
Tricia L. Robello, LS #1246  
Deputy County Surveyor  
Sedgwick County, Kansas



411 N. WEBB ROAD  
WICHITA, KS. 67206  
316-684-9600

12/17/2012 10:00:00 AM CST