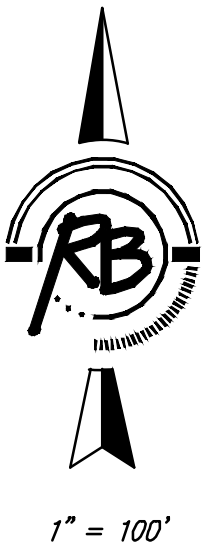


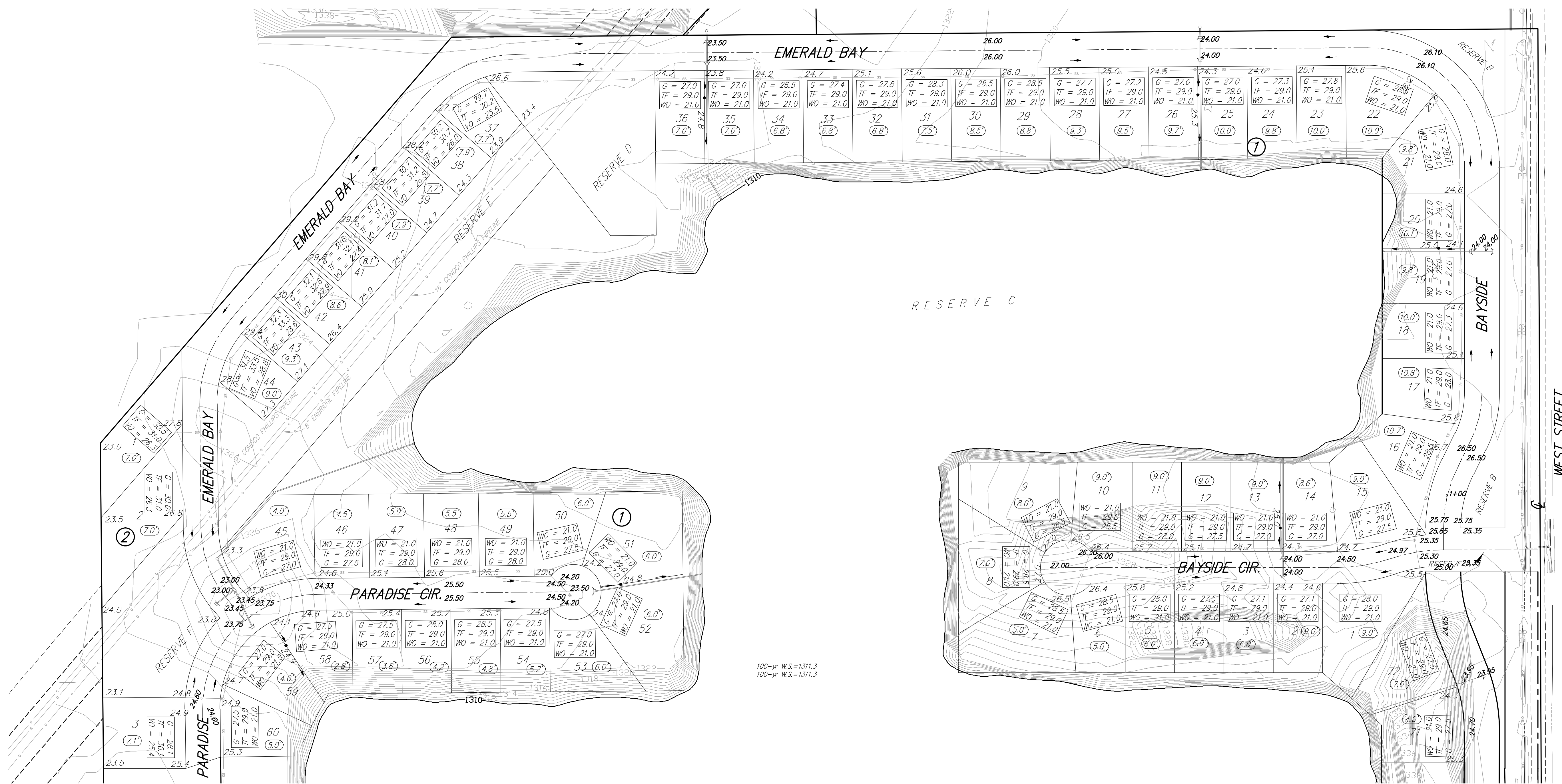
# Grading Plan

# EMERALD BAY ESTATES

## Wichita, Sedgwick County, Kansas



1" = 100'



100-yr W.S.=1311.3  
100-yr W.S.=1311.3

MINIMUM BUILDING PAD ELEVATION FOR LOWEST OPENING INTO STRUCTURES			
BLOCK	LOT NO.'S	ELEVATION (N.G.V.D.)	ELEVATION (M.A.V.D.)
1	1 - 60	1321.0	1321.5

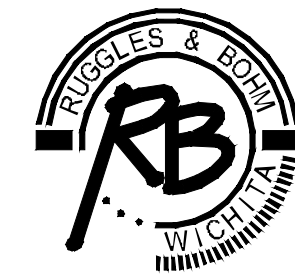
**BENCHMARKS FOR EMERALD BAY ESTATES**

- BM #1**  
A brass disc on top of the curb, at the northwest corner of Bayside Ct. and Bayside, at the north curb return, Elevation = 1325.45 NGVD29.
- BM #2**  
A brass disc on top of the curb, at the lot line common to Lots 18 & 19, Block 1, Elevation = 1324.25 NGVD29.
- BM #3**  
A brass disc on top of the curb, at the point of tangency on Lot 23, Block 1, Elevation = 1325.28 NGVD29.

**LEGEND**

- (5.0) ELEVATION DIFFERENCE BETWEEN TOP OF FOUNDATION AND VIRGIN SOIL.
- WO = WALK OUT ELEVATION  
TF = TOP OF FOUNDATION  
G = GARAGE ELEVATION  
VO = VIEW OUT ELEVATION

NOTE: VIRGIN SOIL IS BASED ON TOPOGRAPHIC SURVEY DATA COLLECTED IN THE FIELD PRIOR TO CONSTRUCTION. EXISTING STOCKPILES ARE NOT CONSIDERED VIRGIN SOIL BECAUSE SUFFICIENT TIME FOR CONSOLIDATION HAS NOT PASSED SINCE THEIR PLACEMENT.



**Ruggles & Bohm, P.A.**  
Engineering, Surveying, Land Planning  
924 North Main  
Wichita, Kansas 67203  
www.rbkansas.com  
(316) 264-8008  
(316) 264-4621 fax  
E-mail: info@rbkansas.com