

NOTES:

1. Cross-drainage agreements shall be required at the time of plotting.
2. All outlets to 127th Street, Central Avenue, Crest Lake Addition or other off site areas shall conform to City of Wichita water quality requirements.
3. Detailed site grading and final drainage plans to be designed by a licensed professional engineer at the time of building permit.
4. Storm sewer easements will be provided at the time of building permit only as needed to allow drainage to discharge across adjacent lots.
5. Any revised drainage plan must be approved by storm water engineer prior to building permits being issued.
6. Any storm water detention areas required may be revised when the final plans for the development are completed but the runoff amounts will be at or below the pre-development discharge rates. The final drainage report shall show discharge rates and stage/storage/discharge curves for any on-site detention areas.
7. The detention pond as shown is proposed. The final pond location, configuration, and design will need to be resolved at the time of building permit.
8. A drainage reserve or easement for the proposed detention cell will be dedicated by Separate Instrument during final site design.
9. Downstream bank protection will be designed at the time of final site design.
10. Minimum pad elevation adjacent to proposed detention cell shall be 1360.25.

CALCULATION NOTES:

1. Determination of Q's was made using the SCS method.
2. Curve Numbers weighted based on hydrologic soil groups.

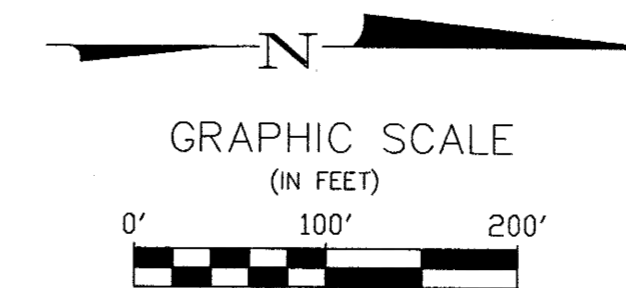
Site	Area	Existing Conditions (24-Hour Storm)						
		CN	1-Year	2-Year	5-Year	10-Year	25-Year	100-Year
Area "A"	4.33	84.0	3.55	5.14	7.49	9.17	11.35	15.49
Area "B"	10.43	83.3	8.56	12.49	18.35	22.56	28.03	38.42

Site	Area	Proposed Conditions (24-Hour Storm)						
		CN	1-Year	2-Year	5-Year	10-Year	25-Year	100-Year
Area "A"	3.27	93.0	8.29	10.84	14.44	16.95	20.16	26.18
Area "B"	7.05	92.8	17.75	23.24	31.03	36.44	43.36	56.35
Area "C"	4.44	92.9	9.56	12.55	16.78	19.73	23.50	30.57

Stage-Storage Discharge Table - South Pond		
Stage (elev)	Storage (acre-ft)	Discharge (cfs)
1354.00	0	0
1355.00	0.43	0.22
1356.00	0.94	0.62
1357.00	1.54	9.68
1358.00	2.23	20.77
1359.00	3.00	27.97

LEGEND

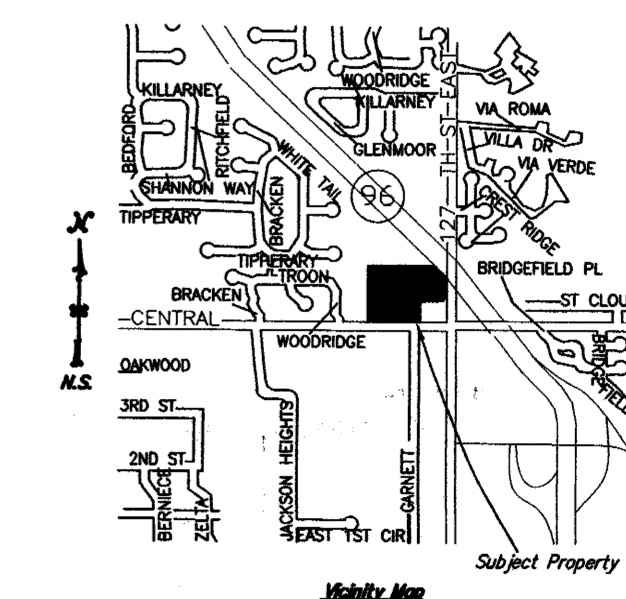
- G = GAS MAIN
- W = WATER MAIN
- SS = SANITARY SEWER
- SWS = STORM WATER SEWER
- UGT = UNDER GROUND ELECTRIC
- UGT = UNDER GROUND TELEPHONE
- B.M. BENCH MARK
- TELE. PED. TELEPHONE PEDESTAL
- C.O. CLEAN OUT
- CATV. CABLE TELEVISION PEDESTAL
- E.R. ELECTRIC BOX
- E.M. ELECTRIC METER
- F.H. FIRE HYDRANT
- GUY ANCHOR
- G.M. GAS METER
- G.P. GUARD POST
- G.V. GAS VALVE
- ICV. IRRIGATION CONTROL VALVE
- L.P. LIGHT POLE
- PL. MKR. PIPELINE MARKER
- P.P. POWER POLE W/LIGHT
- SIGN
- W.M. WATER METER
- W.M.V. WATER METER VAULT
- W.V. WATER VALVE
- XFM. ELECTRIC TRANSFORMER
- SS M.H. SANITARY SEWER MANHOLE
- SWS M.H. STORM WATER SEWER MANHOLE
- T.S. TRAFFIC SIGNAL
- M.W. MONITORING WELL
- W.W. WATER WELL



SURVEY DATUMS
 Horizontal Datum NAD83 at Ground
 Vertical Datum NAVD88
 Basis of Bearings: Kansas South State Plane Coordinate System (US Feet)

Site Bench Mark #1
 Square Cut Top of Curb at the SE. Corner of the Storm Water Inlet, 36°S & 5°W of the SE. Corner Lot 36, Block 1, Crest Lake Addition, Elevation = 1354.88 (NAVD88)

Site Bench Mark #2
 Square Cut Top of Curb, 16.5°S & 19.5°E of the NE. Corner of Subject Property, Elevation = 1369.58 (NAVD88)



TODD PARKER ADDITION

A TRACT IN THE SOUTHEAST QUARTER OF SECTION 13, T25S, R2E
 WICHITA, SEDGWICK COUNTY, KANSAS

EXISTING DRAINAGE PLAN

2013

PROPERTY OWNER/ SUBDIVIDER:

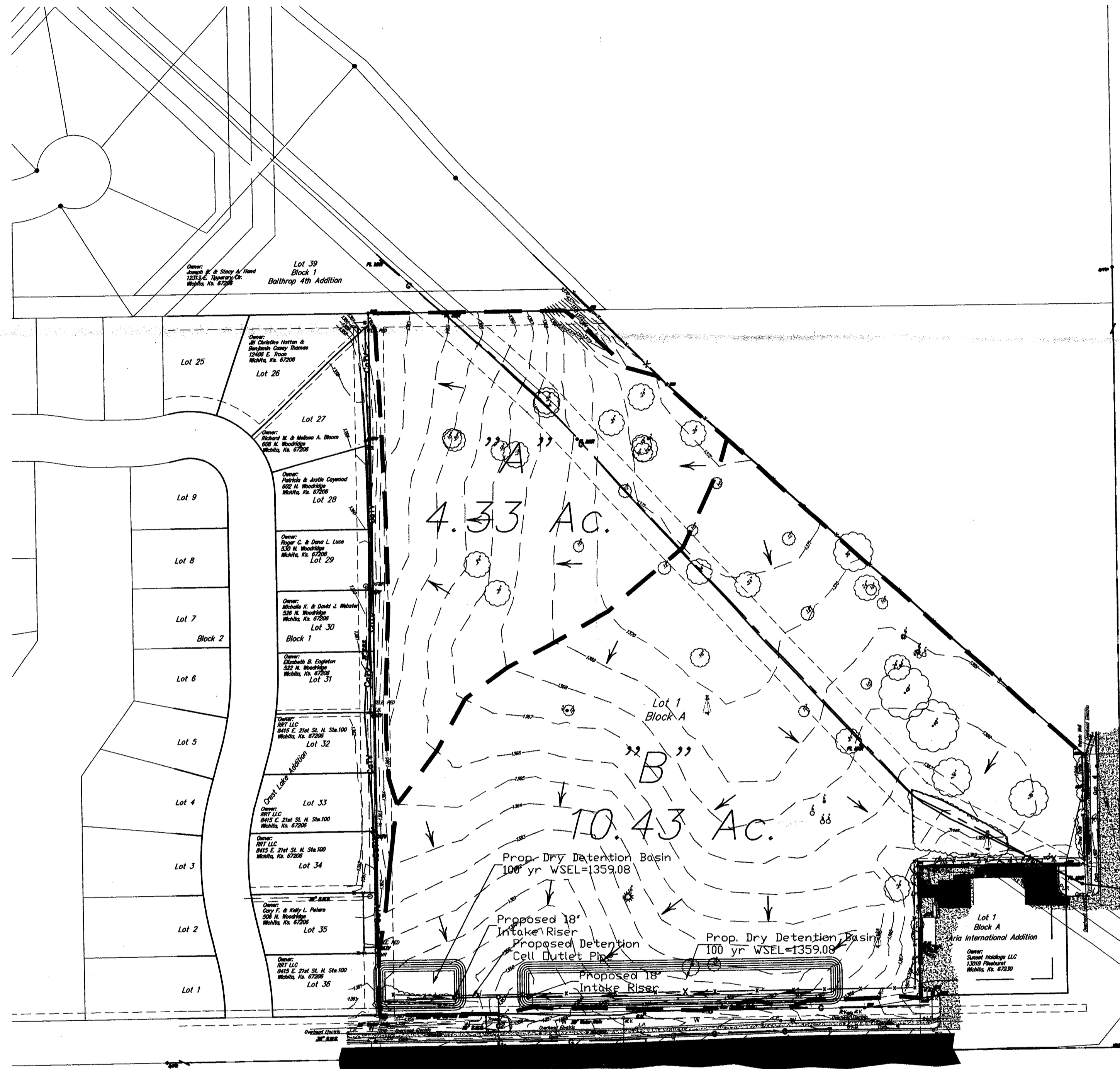
Todd E Parker of Sedgwick County, in the State of Kansas.



POE & ASSOCIATES, INC.
 CONSULTING ENGINEERS

5940 E. Central, Suite 200 □ Wichita, KS
 67208-4242

Phone 316/685-4114 □ FAX 316/685-4444



NOTES:

1. Cross-drainage agreements shall be required at the time of platting.
2. All outlets to 127th Street, Central Avenue, Crest Lake Addition or other off site areas shall conform to City of Wichita water quality requirements.
3. Detailed site grading and final drainage plans to be designed by a licensed professional engineer at the time of building permit.
4. Storm sewer easements will be provided at the time of building permit only as needed to allow drainage to discharge across adjacent lots.
5. Any revised drainage plan must be approved by storm water engineer prior to building permits being issued.
6. Any storm water detention areas required may be revised when the final plans for the development are completed but the runoff amounts will be at or below the pre-development discharge rates. The filed final drainage report shall show discharge rates and stage/storage/discharge curves for any on-site detention areas.
7. The detention pond as shown is proposed. The final pond location, configuration, and design will need to be resolved at the time of building permit.
8. A drainage reserve or easement for the proposed detention cell will be dedicated by Separate Instrument during final site design.
9. Downstream bank protection will be designed at the time of final site design.
10. Minimum pad elevation adjacent to proposed detention cell shall be 1,360.25.

CALCULATION NOTES:

1. Determination of Q's was made using the SCS method.
2. Curve Numbers weighted based on hydrologic soil groups.

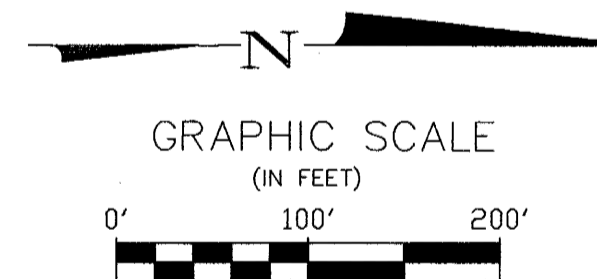
Existing Conditions (24-Hour Storm)								
Site	Area	CN	1-Year	2-Year	5-Year	10-Year	25-Year	100-Year
Area "A"	4.33	84.0	3.55	5.14	7.49	9.17	11.35	15.49
Area "B"	10.43	83.3	8.56	12.49	18.35	22.56	28.03	38.42

Proposed Conditions (24-Hour Storm)								
Site	Area	CN	1-Year	2-Year	5-Year	10-Year	25-Year	100-Year
Area "A"	3.27	93.0	8.29	10.84	14.44	16.95	20.16	26.18
Area "B"	7.05	92.8	17.75	23.24	31.03	36.44	43.36	56.35
Area "C"	4.44	92.9	9.56	12.55	16.78	19.73	23.50	30.57

Stage-Storage Discharge Table - South Pond		
Stage (elev)	Storage (acre-ft)	Discharge (cfs)
1354.00	0	0
1355.00	0.43	0.22
1356.00	0.94	0.62
1357.00	1.54	9.68
1358.00	2.23	20.77
1359.00	3.00	27.97

LEGEND

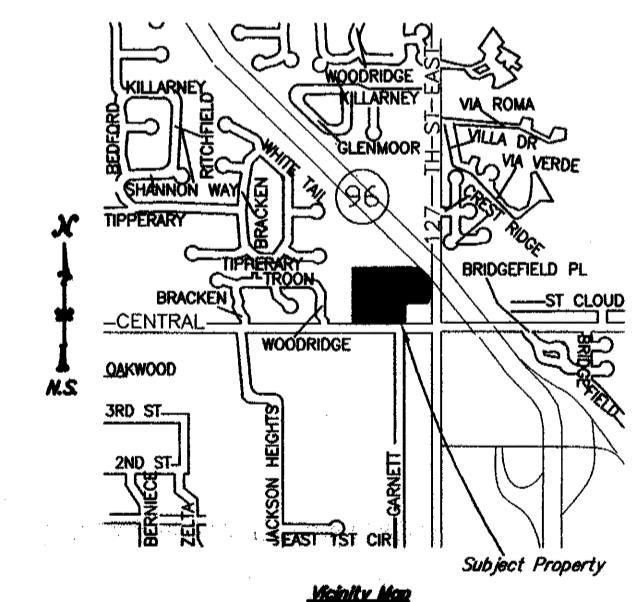
- G = GAS MAIN
- W = WATER MAIN
- SS = SANITARY SEWER
- SWS = STORM WATER SEWER
- UGE = UNDER GROUND ELECTRIC
- UGT = UNDER GROUND TELEPHONE
- B.M. = BENCH MARK
- TELE. PED. = TELEPHONE PEDESTAL
- C.O. = CLEAN OUT
- CATV = CABLE TELEVISION PEDESTAL
- E.B. = ELECTRIC BOX
- E.M. = ELECTRIC METER
- F.H. = FIRE HYDRANT
- GUY ANCHOR
- G.M. = GAS METER
- G.P. = GUARD POST
- G.V. = GAS VALVE
- ICV = IRRIGATION CONTROL VALVE
- L.P. = LIGHT POLE
- PL MKR = PIPELINE MARKER
- P.P. = POWER POLE W/LIGHT
- SIGN
- W.M. = WATER METER
- W.M.V. = WATER METER VAULT
- W.V. = WATER VALVE
- WTRM = ELECTRIC TRANSFORMER
- SS M.H. = SANITARY SEWER MANHOLE
- SWS M.H. = STORM WATER SEWER MANHOLE
- T.S. = TRAFFIC SIGNAL
- M.W. = MONITORING WELL
- W.W. = WATER WELL



SURVEY DATUMS
 Horizontal Datum NAD83 at Ground
 Vertical Datum NAVD88
 Basis of Bearings: Kansas South State
 Plane Coordinate System (US Feet)

Site Bench Mark #1
 Square Cut Top of Curb at the SE. Corner
 of the Storm Water Inlet, 36'S. & 5'W. of
 the SE. Corner Lot 36, Block 1, Crest Lake
 Addition, Elevation = 1,354.88 (NAVD88)

Site Bench Mark #2
 Square Cut Top of Curb, 16.5'S. & 19.5'E.
 of the NE. Corner of Subject Property.
 Elevation = 1,369.58 (NAVD88)



TODD PARKER ADDITION

A TRACT IN THE SOUTHEAST QUARTER OF SECTION 13, T25S, R2E
 WICHITA, SEDGWICK COUNTY, KANSAS

EXISTING DRAINAGE PLAN

2013

PROPERTY OWNER/ SUBDIVIDER:

Todd E Parker of Sedgwick County, in the State of
 Kansas.



POE & ASSOCIATES, INC.
 CONSULTING ENGINEERS
 5940 E. Central, Suite 200 | Wichita, KS
 67208-4242
 Phone 316/685-4114 | FAX 316/685-4444