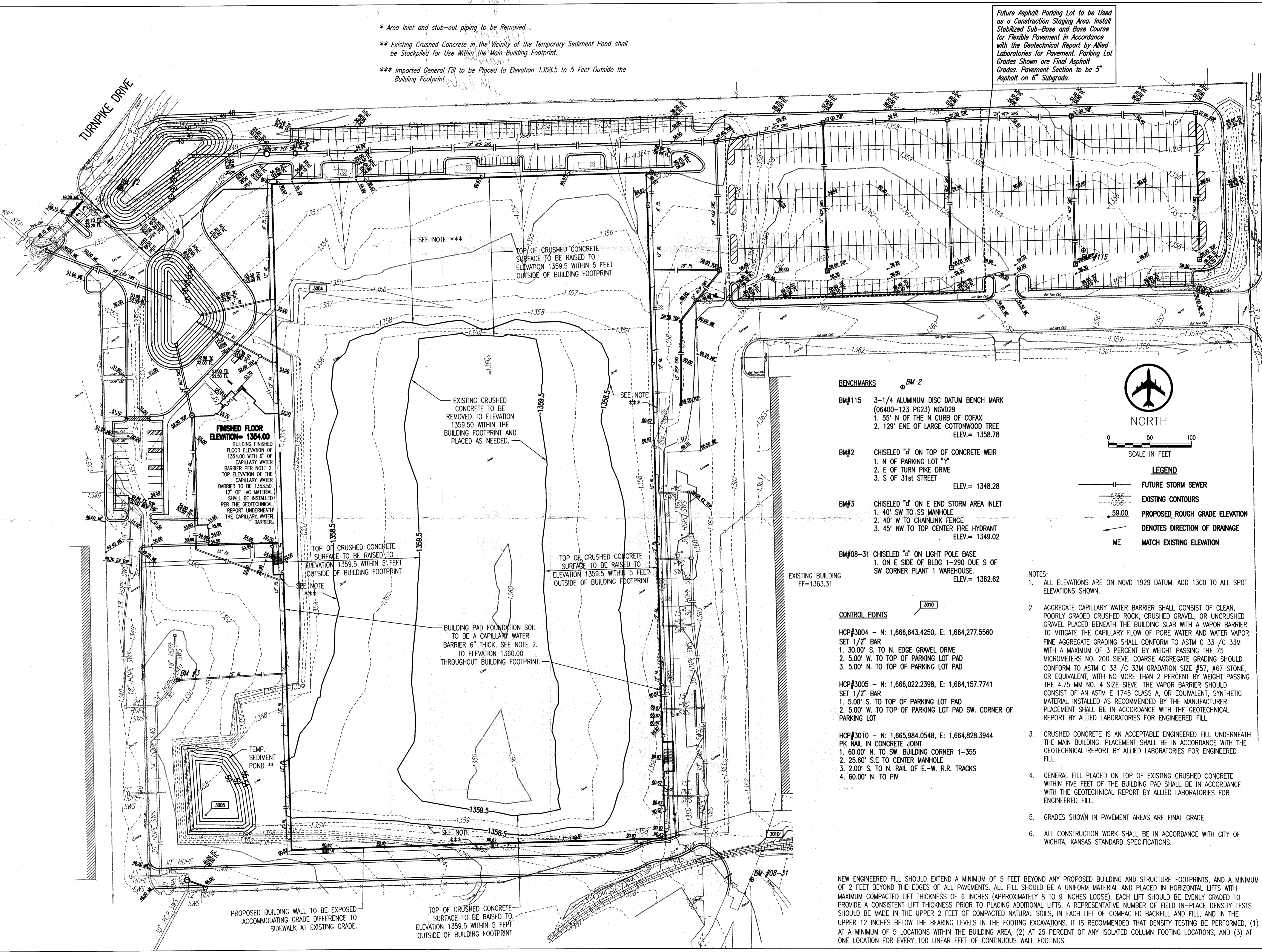


3/15/2013 10:24:27 AM by JWH
 C:\2013\1028\Drawings\Submittal\1028-1-1 Preliminary Grading Plan
 THIS DOCUMENT IS THE PROPERTY OF SPIRIT AEROSYSTEMS, INC. ITS ACCEPTANCE CONSTITUTES AN AGREEMENT THAT IT SHALL BE RETURNED UPON REQUEST, AND THAT THE CONTENTS THEREOF SHALL NOT BE DISCLOSED, REPRODUCED, OR COPIED EXCEPT BY WRITTEN PERMISSION OF SPIRIT AEROSYSTEMS, INC.



CONTACT: **PEC** PROFESSIONAL ENGINEERING CONSULTANTS, P.A.
 303 SOUTH TOPERA WICHITA, KS 67202
 316-262-2891 www.pec.com

PROJECT: **NEW NORTH MANUFACTURING FACILITY**
 BLDG. NO. 1-312G
 SHEET: C-1
 106L- FIG. 1 -00

DESIGNED BY: JEH
 DRAWN BY: JAN
 DATE: 03/15/2013

FACILITIES ENGINEERING
 JOB NUMBER: 939-901
 WICHITA

DATE	DESCRIPTION	BY	APPROVED

FIRE PROTECTION REVIEW
 APPROVED
 NOT REQUIRED

ACCEPTABILITY
 THIS DESIGN AND/OR SPECIFICATION IS APPROVED
 NAME: _____ DATE: _____
 DEPT: _____

OLIVER
SPIRIT AEROSYSTEMS
 CLW Architecture
 1812 E. Douglas, Wichita, KS 67217
 www.clw.com