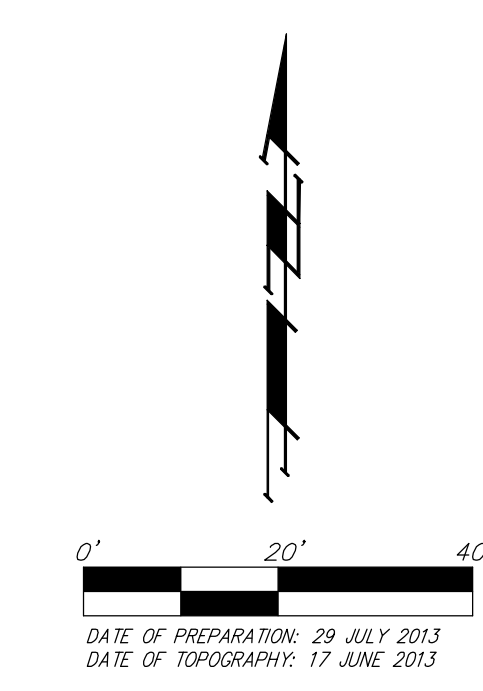
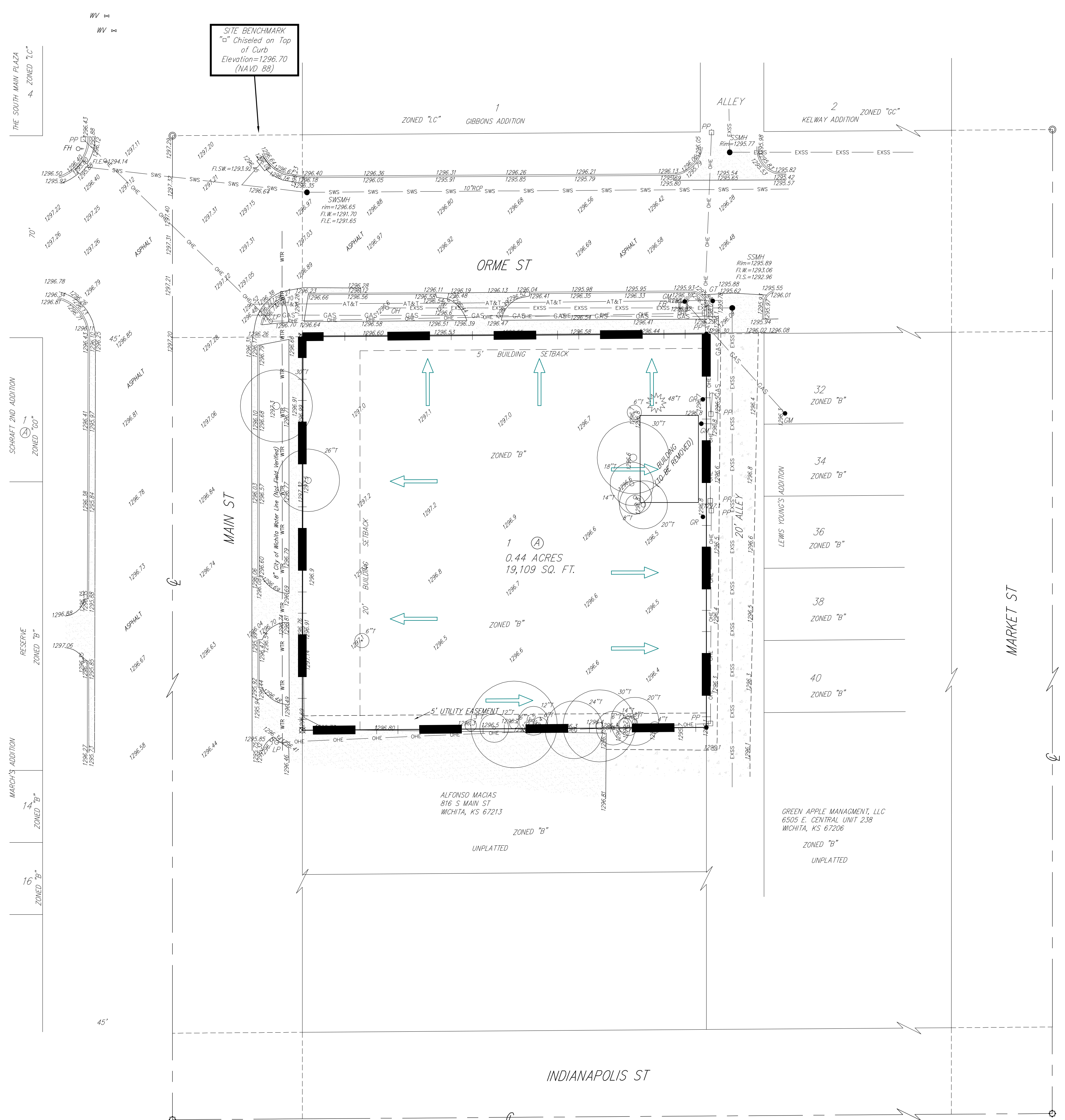


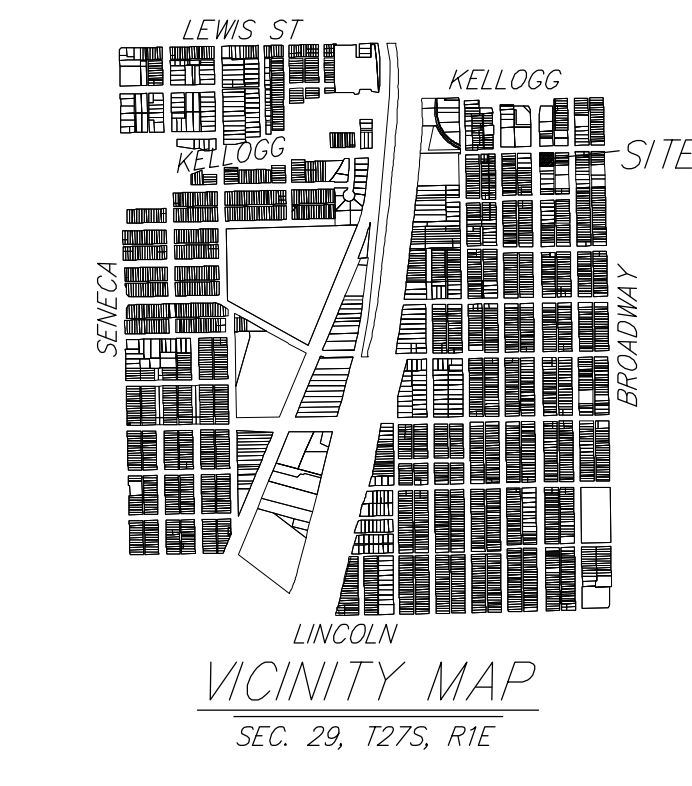
# DRAINAGE PLAN

## PASSIVHAUS ADDITION

### WICHITA, SEDGWICK COUNTY, KANSAS

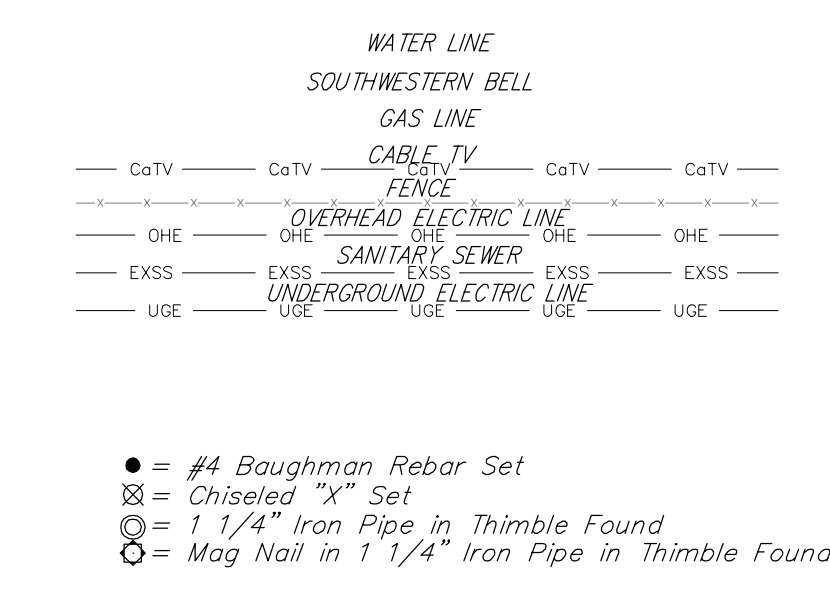


OWNER:  
MICHAEL H. GARVEY REVOCABLE TRUST  
133 S FOUNTAIN  
WICHITA, KANSAS 67218



<b>EXISTING SITE</b>
DA = 0.44 acres
C' = 0.40
Tc = 15 min
Q <sub>2</sub> = 0.7 cfs
Q <sub>5</sub> = 0.8 cfs
Q <sub>10</sub> = 1.0 cfs
Q <sub>100</sub> = 1.3 cfs

<b>DEVELOPED SITE</b>
DA = 0.44 acres
C' = 0.54
Tc = 15 min
Q <sub>2</sub> = 0.9 cfs
Q <sub>5</sub> = 1.1 cfs
Q <sub>10</sub> = 1.2 cfs
Q <sub>100</sub> = 1.8 cfs



- (C) = Calculated
- CH = Chord Length
- CH BR = Chord Bearing
- Δ = Delta Angle
- D = Degree of Curve
- (D) = Described
- L = Arc Length
- (M) = Measured
- (P) = Platted
- (Pro) = Prorated
- R = Radius
- EB □ = Electric Box
- FH ○ = Fire Hydrant
- GM ● = Gas Meter
- GT ● = Gas Test
- GR ● = Gas Regulator
- = Guy = Guy Anchor
- GV ● = Gas Valve
- LP ○ = Light Pole
- OH ○ = Observation Hole
- = Pine Tree
- PP □ = Power Pole
- SSMH ● = Sanitary Sewer Manhole
- SWSMH ● = Stormwater Sewer Manhole
- WV ○ = Water Valve

NOTES: The site lies within a FEMA Zone X-Shaded as of this date per FEMA FIRM Panel 365 of 700, for Wichita, Sedgwick County, Kansas; effective February 2, 2007.

The site is less than 1 acre and will therefore not be required to provide detention, water quality treatment, or downstream channel protection. The site will continue to sheet flow to the street ROWs as well as the rear alley.

## PASSIVHAUS ADDITION

29 JULY 2012

**Baughman Company, P.A.**  
315 Ellis St. Wichita, KS 67211 P 316-262-7271 F 316-262-0149  
ENGINEERING | SURVEYING | PLANNING | LANDSCAPE ARCHITECTURE

F:\PROJECTS\PASSIVHAUSADDITION\PASSIVHAUSADDITION\_OSF.DWG