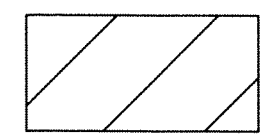


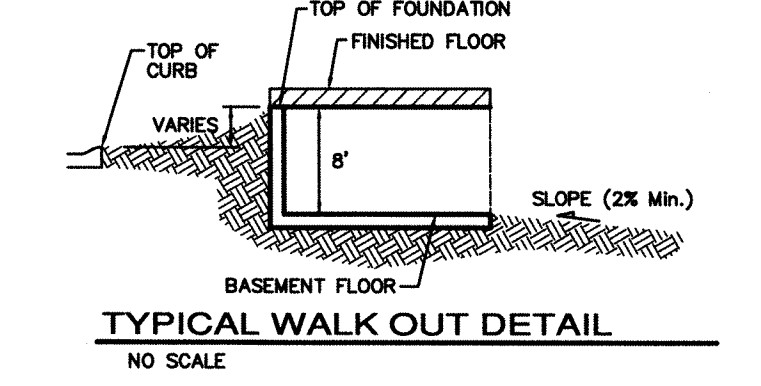
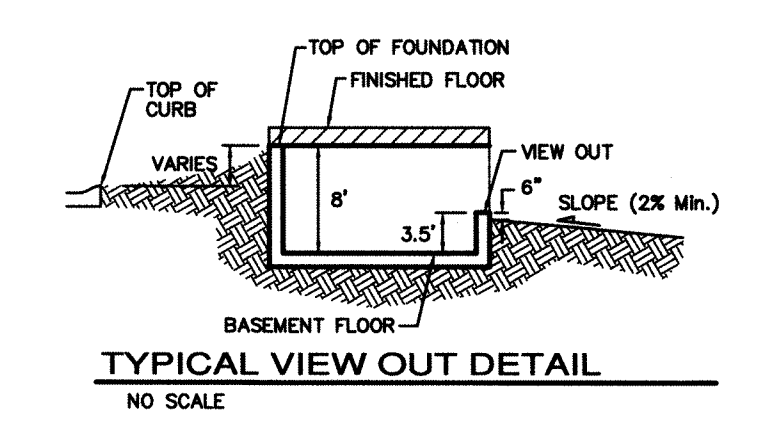
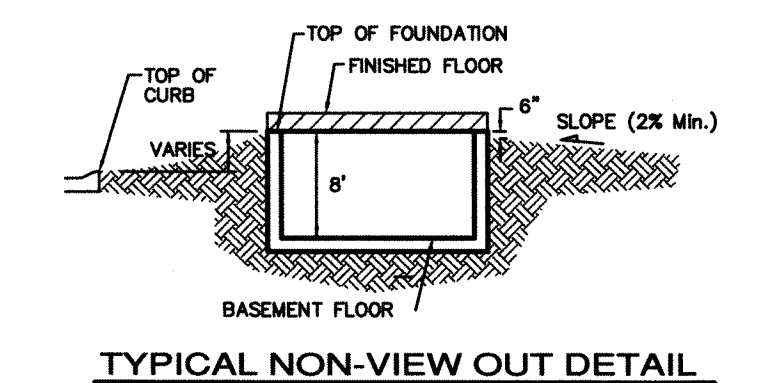
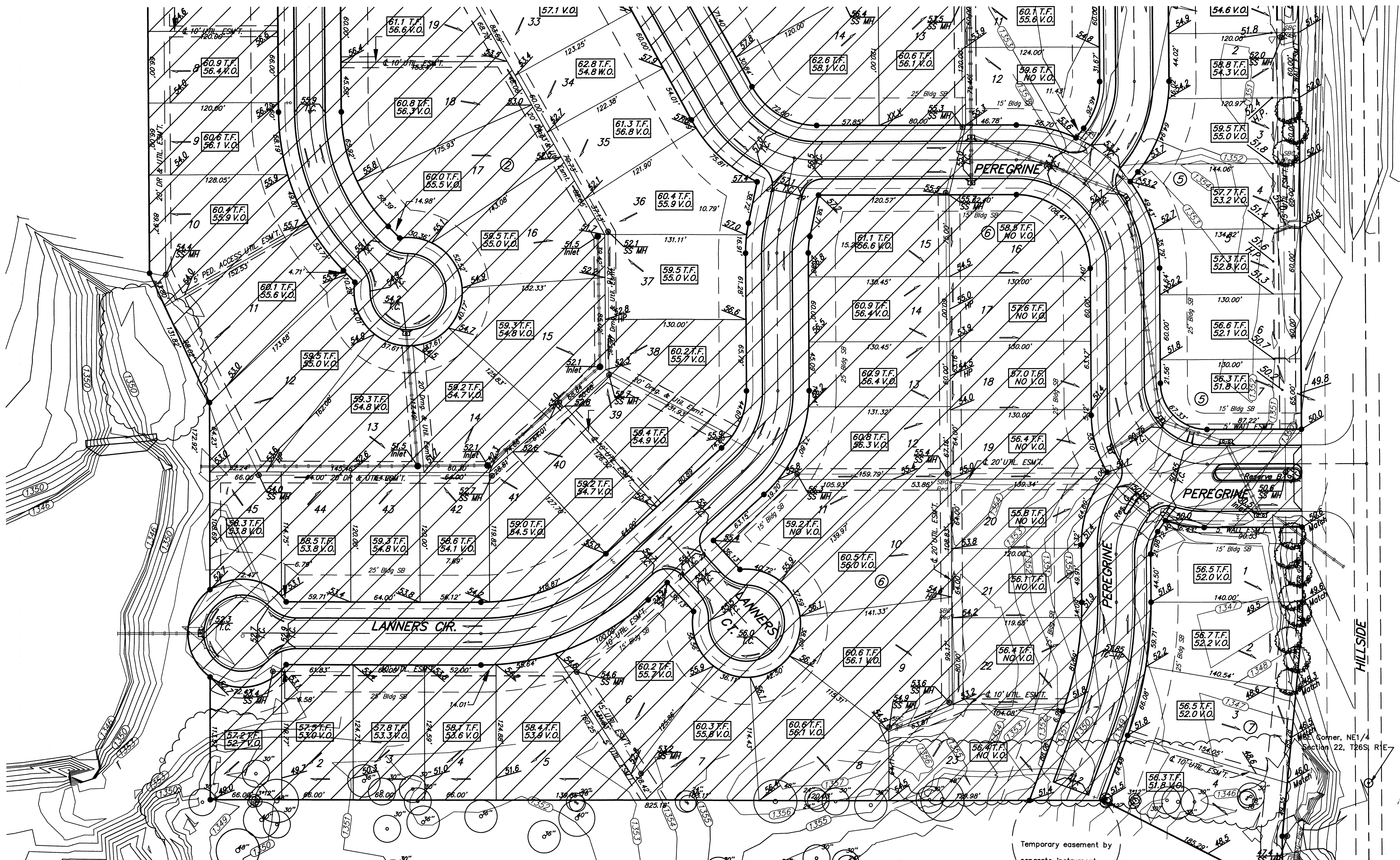
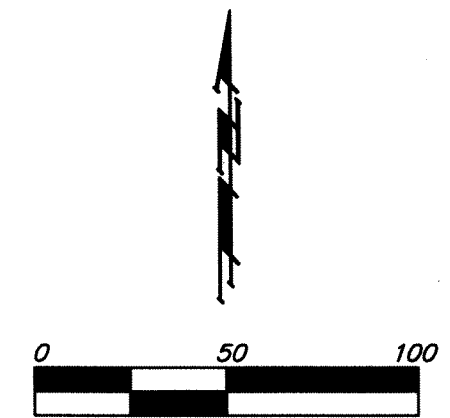
**BENCHMARKS:**  
 BM #1: "x" CL face of catch basin, west side of Lot 4, Block 5.  
 Elev. = 1352.47 MSL

BM #2: "x" south end of the south curb return at Kite and Peregrine.  
 Elev. = 1359.85 MSL

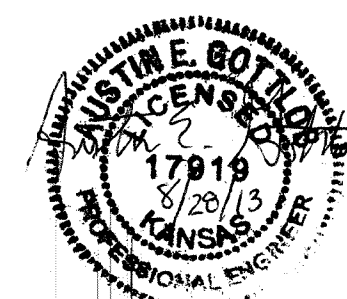
—(175)— EXISTING GRADE



SHADED PORTIONS REPRESENT AREAS UNREVISED FROM ORIGINAL GRADING DATED 11/20/03 BY POE & ASSOCIATES OF KANSAS, INC.



- NOTES:**
1. PROPOSED TOP OF FOUNDATION ELEVATIONS ARE SHOWN ON PLANS. CONTRACTOR TO SET FINISHED FLOOR AND GARAGE FLOOR ELEVATIONS. ALL STREET ELEVATIONS SHOWN ON PLANS ARE FOR TOP OF CURB (FULL-HEIGHT).
  2. THIS GRADING PLAN IS DESIGNED WITH VIEW-OUTS AND WALK-OUTS. ELEVATIONS SHOWN AS XX.X V.O. DEPICT VIEW-OUT STRUCTURES. ELEVATIONS SHOWN AS XX.X W.O. DEPICT WALK-OUT STRUCTURES.
  3. ALL LOTS SHALL MEET MINIMUM PAD REQUIREMENT AS SHOWN ON THE RECORDED PLAT.
  4. LOT DIMENSIONS HAVE BEEN OMITTED ON THIS PLAN. REFER TO THE RECORDED PLAT FOR FINAL DIMENSION, EASEMENT, & BUILDING SETBACK INFORMATION.
  5. HOUSE PAD ELEVATIONS DEPICTED WITH BOLD OUTLINES WITH TOP OF FOUNDATIONS SHOWN AS XX.X T.F.\* INDICATE THAT DEEP FOOTINGS OR DEEP FOUNDATIONS MAY BE REQUIRED.
  6. A DRAINAGE PLAN HAS BEEN DEVELOPED FOR THIS SUBDIVISION AND IS ON FILE WITH THE CITY OF WICHITA, KANSAS. DRAINAGE INTENT SHALL REMAIN AS DEPICTED OR AS MODIFIED WITH THE APPROVAL OF THE CITY ENGINEER OF THE CITY OF WICHITA, KANSAS. NO OBSTRUCTIONS WHICH IMPEDE THE FLOW OF THIS DRAINAGE PLAN SHALL BE ALLOWED.
  7. ALL ELEVATIONS SHOWN ARE M.S.L. DATUM.



<b>FALCON FALLS ADDITION</b> <b>GRADING PLAN</b> WICHITA, KANSAS	
<small>Baughman Company, P.A. 315 Ellis St. Wichita, KS 67211 P 316-262-7271 F 316-262-0149          ENGINEERING   SURVEYING   PLANNING   LANDSCAPE ARCHITECTURE</small>	
PROJECT NUMBER	DESIGN
REVISIONS:	DRAWN
	TMS
	APPROVED
	DATE
	2/22/05
	SCALE
	Noted
	SHEET
	<b>2 OF 2</b>

8/28/13 REVISED PADS & REAR CORNER ELEV. TO ACCOUNT FOR EXISTING BERMS. BY AEG  
 9/27/05 REVISED PAD ELEV. LOT 2, BLOCK 5 BY AEG