

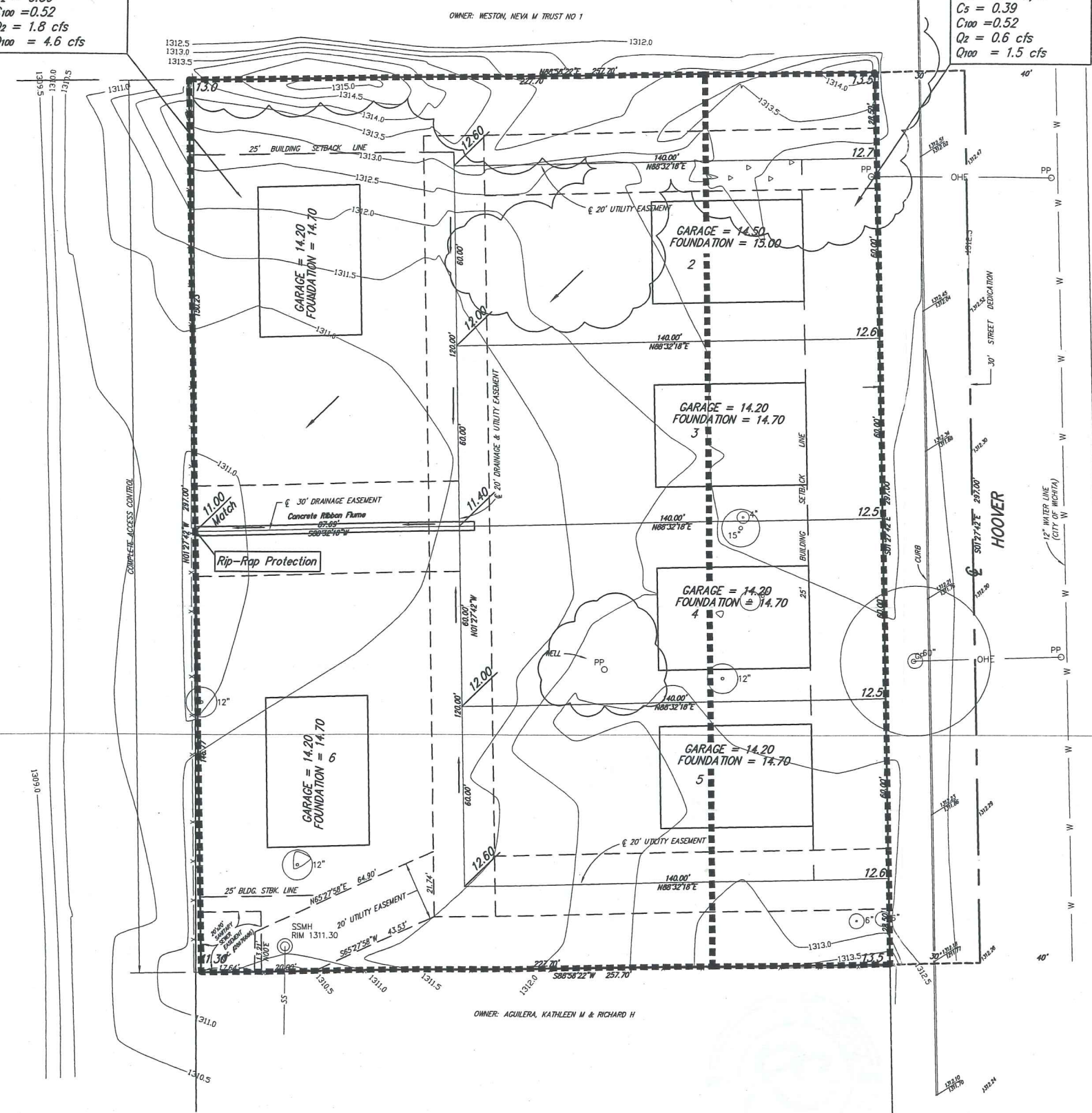
Drainage Plan

ARMSTRONG ESTATES

Wichita, Sedgwick County, Kansas

West Basin:
 Area = 1.2 acres
 $I_2 = 3.83$ in/hr
 $I_{100} = 7.37$ in/hr
 $C_2 = 0.39$
 $C_{100} = 0.52$
 $Q_2 = 1.8$ cfs
 $Q_{100} = 4.6$ cfs

East Basin:
 Area = 0.40 acres
 $I_2 = 3.83$ in/hr
 $I_{100} = 7.37$ in/hr
 $C_2 = 0.39$
 $C_{100} = 0.52$
 $Q_2 = 0.6$ cfs
 $Q_{100} = 1.5$ cfs



LEGAL DESCRIPTION:
 The east 257.7 feet of the north 297 feet of the SE1/4 of Sec. 15, T27S, R1W of the 6th P.M., Sedgwick County, Kansas.

OWNER:
 Attn: Bob Armstrong
 4200 W. Douglas
 Wichita, KS 67212

Ph. (316) 312-3303

SUBDIVIDER & ENGINEER:
 Ruggles & Bohm P.A.

EXISTING ZONING:
 Subject property and the rest of the surrounding property is zoned SF-5. Existing use is vacant land.

FLOOD ZONE:
 According to the FEMA/FIRM Community Panel No. 200328 0020 B, effective May 15, 1986; the property shown hereon is located in Zones B.

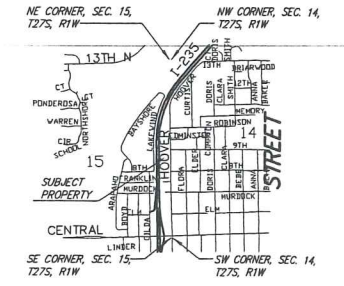
GROSS AREA:
 76,534.7 Sq. Ft.±
 1.76 Acres±

DATE OF TOPOGRAPHY:
 JUNE 14, 2006

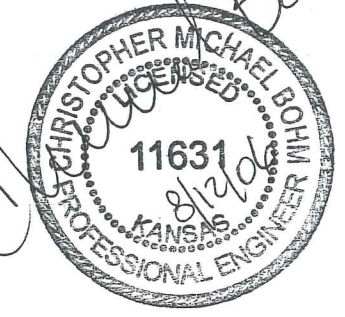


- LEGEND**
- SS SANITARY SEWER (CITY OF WICHITA)
 - OHE OVERHEAD ELECTRIC (WESTAR)
 - W WATER MAIN (CITY OF WICHITA)
 - PP POWER POLE (WESTAR)
 - GP GUY POLE
 - PA GUY ANCHOR
 - SS M.H. SANITARY SEWER MANHOLE (CITY OF WICHITA)
 - SP LOCATION OF SPOT ELEVATION
 - DT DECIDUOUS TREE (CALIPER INDICATED)

BENCH MARK: CITY OF WICHITA DISK
 34' E. OF THE CENTERLINE OF HOOVER &
 42' S. OF THE CENTERLINE OF NINTH STREET
 ELEV = 1313.89 M.S.L.



VICINITY MAP
 NOT TO SCALE



**ARMSTRONG ESTATES
 DRAINAGE PLAN
 WICHITA, KANSAS**

	<p>Ruggles & Bohm, P.A. Engineering, Surveying, Land Planning</p>		DESIGN CMB	SHEET 1 OF 1
	<p>924 North Main (316) 264-8008 Wichita, Kansas 67203 (316) 264-4621 fax www.rbkansas.com E-mail: info@rbkansas.com</p>		DRAWN CMB	
DRAWING FILE Base [MODEL]		PROJECT NUMBER	DATE July 20, 2006	

DWG FILE: SURVEY BASE
 PROJECT NO. 2855P
 JULY 20, 2006