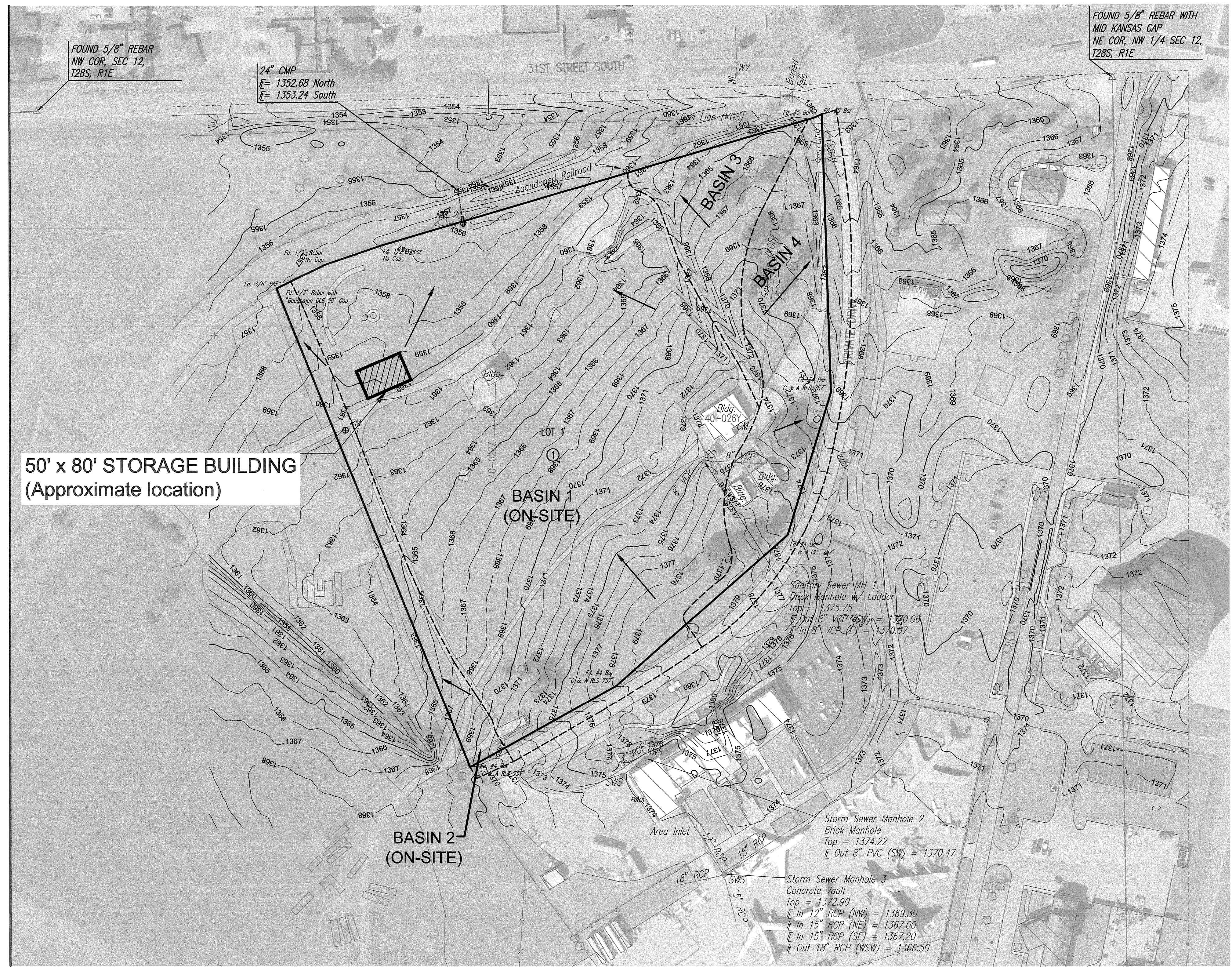


# KANSAS AVIATION MUSEUM ADDITION

## AN ADDITION TO WICHITA, SEDGWICK COUNTY, KANSAS

### DRAINAGE PLAN



HYDROLOGY		BASIN		1	
PRE DEVELOPMENT					
	HSG	D	CN	ACRES	CN * AC
EX. UNDISTURBED PERVIOUS	84		84	0	0
DISTURBED PERVIOUS	88		88	10.125	891
IMPERVIOUS 10%	98		98	1.125	110.25
Tc=	15 MIN.		TOTAL	11.25	1001.25
			Weighted CN =		89
HYDROLOGY					
POST DEVELOPMENT		BASIN		1	
	HSG	D	CN	ACRES	CN * AC
EX. UNDISTURBED PERVIOUS	84		84	0	0
DISTURBED PERVIOUS	88		88	10.0317	882.9192
IMPERVIOUS (+4000 SF)	98		98	1.216827	119.2491
Tc=	15 MIN.		TOTAL	11.25	1002.168
			Weighted CN =		89.08162
HYDROLOGY					
PRE & POST DEVELOPMENT		BASIN		2	
	HSG	D	CN	ACRES	CN * AC
EX. UNDISTURBED PERVIOUS	84		84	0	0
DISTURBED PERVIOUS	88		88	0.702	61.776
IMPERVIOUS 10%	98		98	0.078	7.644
Tc=	10 MIN.		TOTAL	0.78	69.42
			Weighted CN =		89
HYDROLOGY					
PRE & POST DEVELOPMENT		BASIN		3	
	HSG	D	CN	ACRES	CN * AC
EX. UNDISTURBED PERVIOUS	84		84	0	0
DISTURBED PERVIOUS	88		88	1.053	92.664
IMPERVIOUS 10%	98		98	0.117	11.466
Tc=	10 MIN.		TOTAL	1.17	104.13
			Weighted CN =		89
HYDROLOGY					
PRE & POST DEVELOPMENT		BASIN		4	
	HSG	D	CN	ACRES	CN * AC
EX. UNDISTURBED PERVIOUS	84		84	0	0
DISTURBED PERVIOUS	88		88	2.529	222.552
IMPERVIOUS 10%	98		98	0.281	27.538
Tc=	12 MIN.		TOTAL	2.81	250.09
			Weighted CN =		89

**LEGEND**

SITE = 14.91 ACRES

— DIRECTION OF RUNOFF

- - - DRAINAGE BASIN BOUNDARY

— PLAT BOUNDARY

**NOTES**

**Detention:**  
 The added impervious area is less than one-acre therefore storm water quantity controls are not required

**Channel Bank Protection:**  
 The site disturbance is less than 5 acres and does not require channel bank protection.

**Water Quality:**  
 The site disturbance area is less than one-acre and does not require storm water quality management. Future improvements constituting redevelopment of the site may require a Drainage Plan to be developed to address storm water quality.

BASIN 1 = 11.25 ACRES

BASIN 2 = 0.78 ACRES

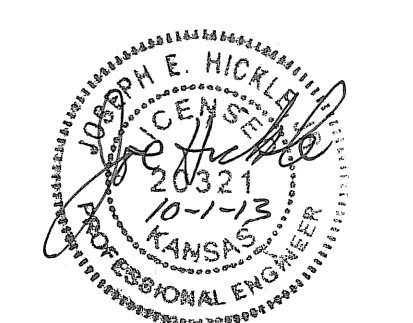
BASIN 3 = 1.17 ACRES

BASIN 4 = 2.81 ACRES

TOTAL BASIN AREA = 16.01 ACRES



BASIN	2-YR	2-YR	5-YR	5-YR	10-YR	10-YR	25-YR	25-YR	100-YR	100-YR
	PRE	POST	PRE	POST	PRE	POST	PRE	POST	PRE	POST
1	33.9	34.0	46.8	46.9	55.8	55.9	67.3	67.4	88.9	89.0
2	2.7	2.7	3.7	3.7	4.4	4.4	5.3	5.3	6.9	6.9
3	4.0	4.0	5.5	5.5	6.5	6.5	7.9	7.9	10.4	10.4
4	9.1	9.1	12.5	12.5	15.0	15.0	18.0	18.0	23.8	23.8



Saved 10-01-2013 1:39:59 PM by CAE  
 Plot Scale: 1:100, 10-01-2013 1:43:35 PM by CAE  
 C:\2013\135511\35511-C-DRAINAGE PLAN