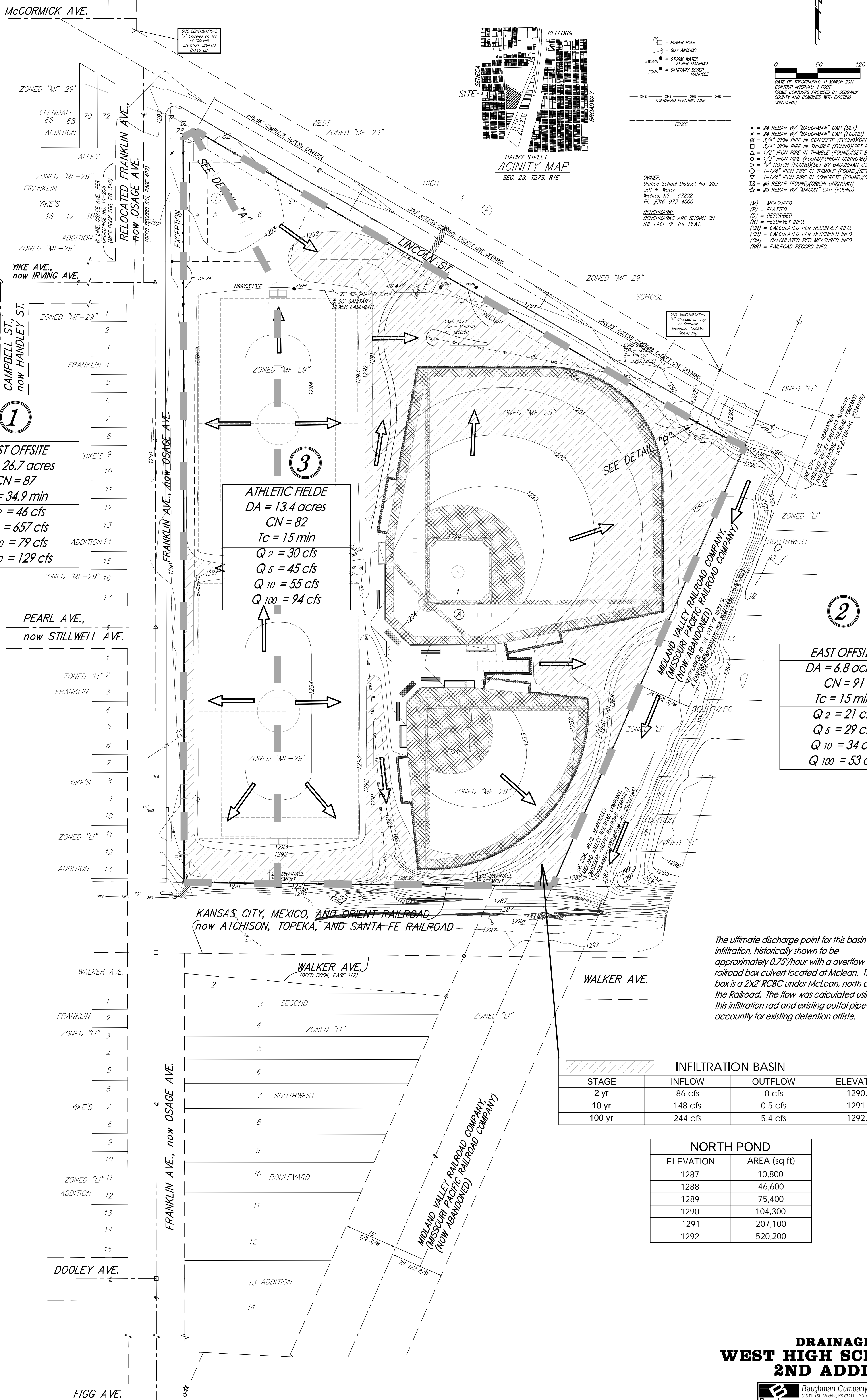


DRAINAGE CONCEPT

WEST HIGH SCHOOL 2ND ADDITION

WICHITA, SEDGWICK COUNTY, KANSAS



- PP = POWER POLE
 - GA = GUY ANCHOR
 - SWM = STORM WATER SEWER MANHOLE
 - SSM = SANITARY SEWER MANHOLE
- DATE OF TOPOGRAPHY: 11 MARCH 2011
 CONTOUR INTERVAL: 1 FOOT
 (SOME CONTOURS PROVIDED BY SEDGWICK COUNTY AND COMBINED WITH EXISTING CONTOURS)
- = #4 REBAR W/ "BAUGHMAN" CAP (SET)
 - = #4 REBAR W/ "BAUGHMAN" CAP (FOUND)
 - = 3/4" IRON PIPE IN CONCRETE (FOUND)(ORIGIN UNKNOWN)
 - ◻ = 3/4" IRON PIPE IN THIMBLE (FOUND)(SET BY RESURVEY)
 - △ = 1/2" IRON PIPE IN THIMBLE (FOUND)(SET BY RESURVEY)
 - ◊ = 1/2" IRON PIPE (FOUND)(ORIGIN UNKNOWN)
 - = 1" NOTCH (FOUND)(SET BY BAUGHMAN CO.)
 - ◇ = 1-1/4" IRON PIPE IN THIMBLE (FOUND)(SET BY RESURVEY)
 - ◇ = 1-1/4" IRON PIPE IN CONCRETE (FOUND)(ORIGIN UNKNOWN)
 - ⊠ = #6 REBAR (FOUND)(ORIGIN UNKNOWN)
 - ⊠ = #6 REBAR W/ "MACON" CAP (FOUND)
- (M) = MEASURED
 (P) = PLATTED
 (D) = DESCRIBED
 (R) = RESURVEY INFO.
 (CR) = CALCULATED PER RESURVEY INFO.
 (CD) = CALCULATED PER DESCRIBED INFO.
 (CM) = CALCULATED PER MEASURED INFO.
 (RR) = RAILROAD RECORD INFO.

WEST OFFSITE

DA = 26.7 acres
CN = 87
Tc = 34.9 min
Q 2 = 46 cfs
Q 5 = 657 cfs
Q 10 = 79 cfs
Q 100 = 129 cfs

ATHLETIC FIELDS

DA = 13.4 acres
CN = 82
Tc = 15 min
Q 2 = 30 cfs
Q 5 = 45 cfs
Q 10 = 55 cfs
Q 100 = 94 cfs

EAST OFFSITE

DA = 6.8 acres
CN = 91
Tc = 15 min
Q 2 = 21 cfs
Q 5 = 29 cfs
Q 10 = 34 cfs
Q 100 = 53 cfs

INFILTRATION BASIN

STAGE	INFLOW	OUTFLOW	ELEVATION
2 yr	86 cfs	0 cfs	1290.5
10 yr	148 cfs	0.5 cfs	1291.3
100 yr	244 cfs	5.4 cfs	1292.0

NORTH POND

ELEVATION	AREA (sq ft)
1287	10,800
1288	46,600
1289	75,400
1290	104,300
1291	207,100
1292	520,200

The ultimate discharge point for this basin is infiltration, historically shown to be approximately 0.75"/hour with an overflow railroad box culvert located at McLean. The box is a 2x2' RCBC under McLean, north of the Railroad. The flow was calculated using this infiltration rate and existing outfall pipe and account for existing detention offsets.