

1300 E. Lewis
Wichita KS 67211
316.247.8233
316.247.8566 fax
krehbielarchitecture.co



DATE: 11.05.2013
DATE
10/31/2013

PAULSEEN FINANCIAL GROUP
WEBB ROAD
WICHITA, KANSAS

PROJECT NO.
12032
SHEET TITLE
EROSION PLAN

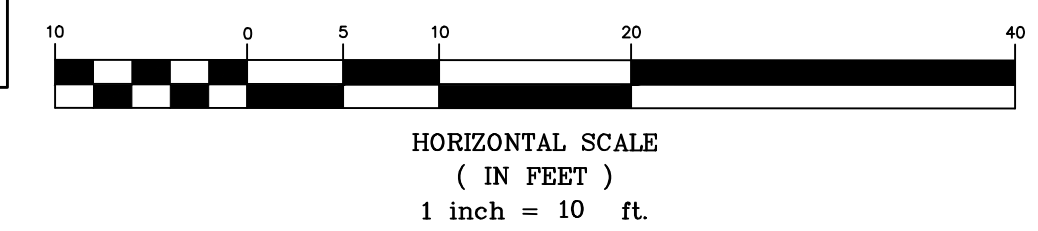
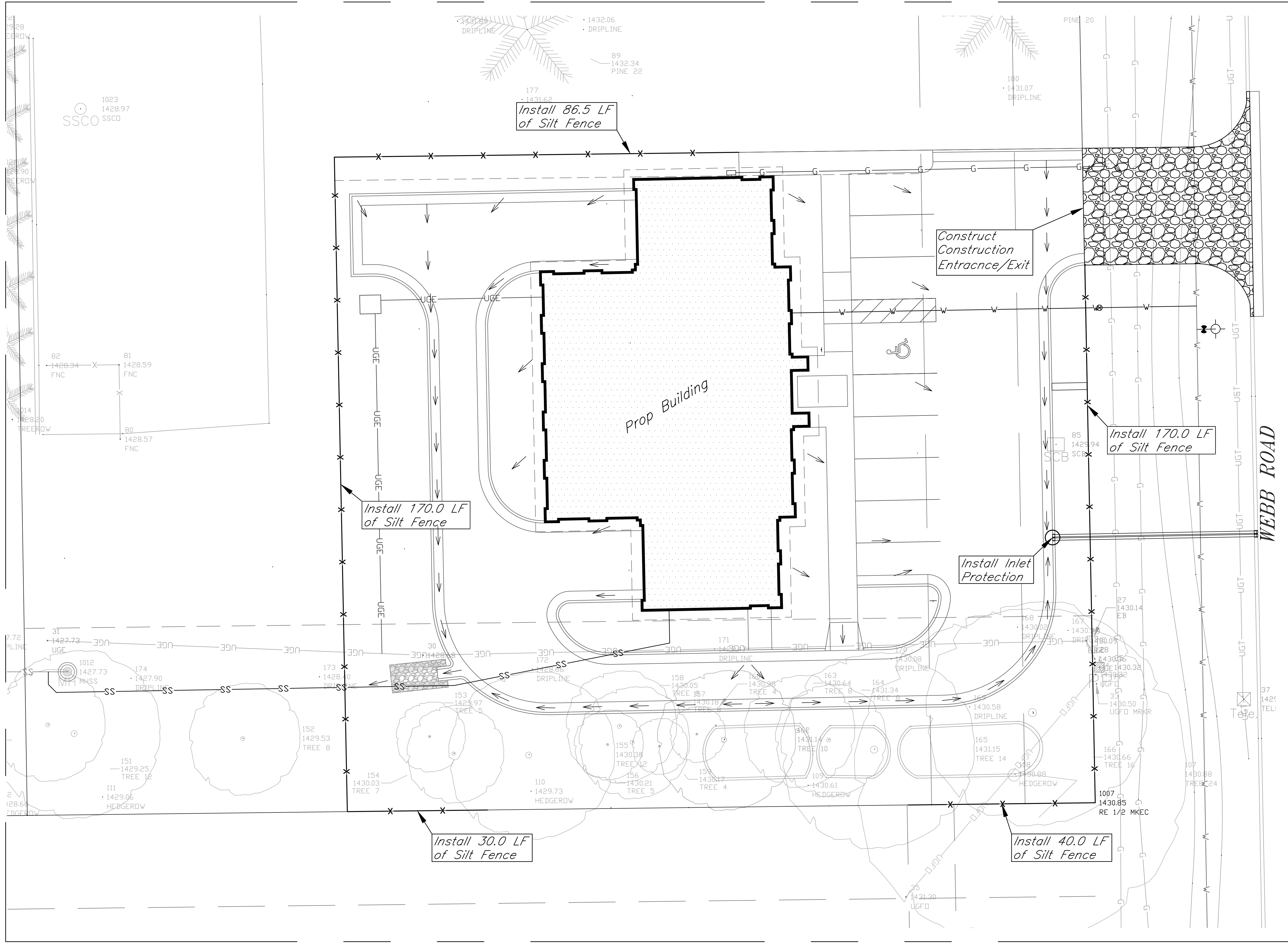
SHEET NO.
C3.0

General Notes:

1. The BMP's shown on this sheet are considered minimum standards. Whenever sediment enters the streets, storm sewers, ditches, or ponds, contractor will install additional BMP's, as needed, to correct the problem.
2. The soil erosion BMP's shown hereon must be in place at all times during construction until such time as the site is re-established with paving or grass.
3. Back of curb protection can include hay bale, silt fence, Curlex barrier, or approved alternate as shown on BMP standard details. This BMP must remain in place until the area between the curb and right-of-way line has been permanently stabilized.
4. The General Contractor is responsible for the installation and maintenance per the prevention maintenance plan.
5. Concrete trucks will be permitted to wash out only at approved locations, then maintain and clean up as conditions require, by contractor. No hazardous materials are expected to be encountered. Any spills (diesel, fuel, oil, etc.) will be cleaned up and removed immediately. Portable toilets will be supplied and maintained at various sites along the project. Disposal of sewage will be handled by a contracting firm specializing in this activity.
6. The above mentioned storm water prevention methods will be monitored daily and maintained as required. A weekly erosion control log will be posted in the job trailer onsite, and updated weekly. Site inspections are required within 24 hours after a precipitation event of 0.5" or greater.

LEGEND:

- Flow Direction
- ⊗ Inlet Protection - to be provided at all inlets subject to silt laden runoff.
- Ditch Check
- Temporary Seeding.
- Silt Fence or Hay Bale Barrier - to be installed along property lines where runoff from construction site can run onto other properties.
- Stabilized Construction Entrance - to be used at all locations where vehicles or equipment enter or exit property.
- Back of Curb Protection - to be installed whenever curb is backfilled to less than 3 inches from top and disturbed earth exists adjacent thereto. (See City Standard Details.)



Benchmark

City of Wichita Disc approximately 9' west of siren pole and 3' north of curb on the northwest corner of 34th Street and Webb Road.
Elevation=1432.09 NAVD88

<p>117 E. Lewis, Wichita, KS 67202 (316)264-0242</p>	<p>KEM NO. 12077</p>
	<p>DESIGN GP</p>
	<p>DRAWN GP</p>