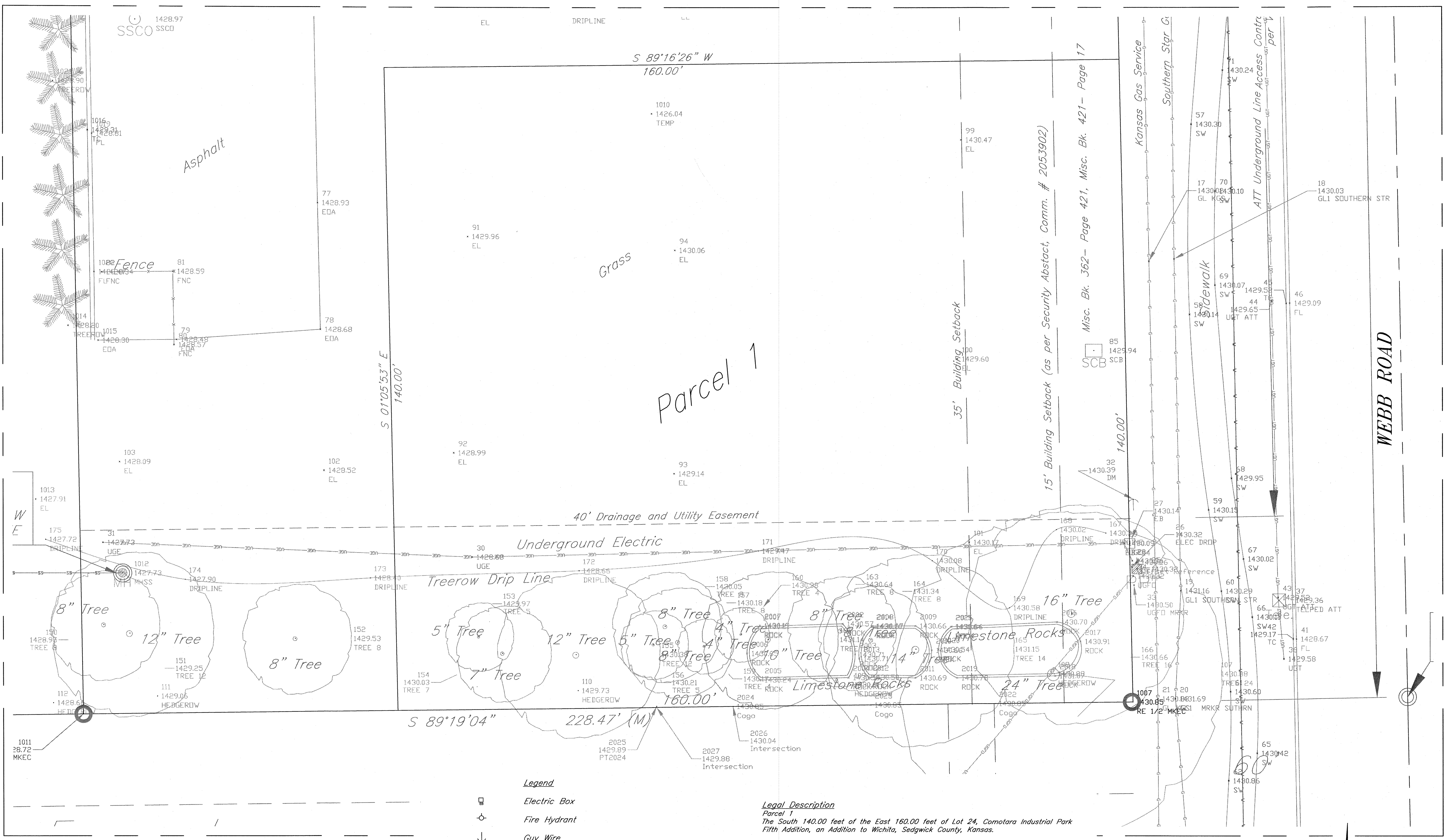




1300 E. Lewis
Wichita KS 67211
314.247.8233
314.247.8544 fax
krehbielarchitecture.co

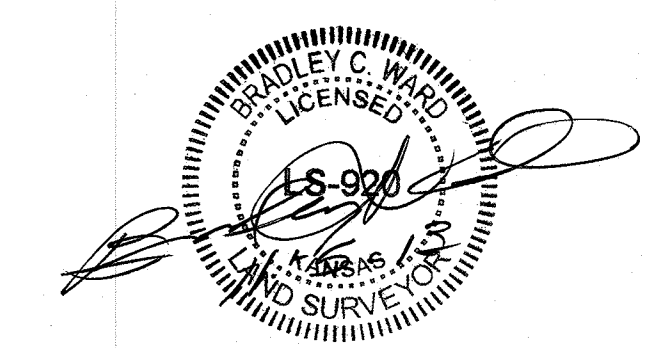


Benchmark
City of Wichita Disc approximately 9' west of siren pole and 3' north of curb on the northwest corner of 34th Street and Webb Road.
Elevation=1432.09 NAVD88

- Legend**
- Electric Box
 - ⊕ Fire Hydrant
 - ↓ Guy Wire
 - ⊕ Power Pole
 - ⊕ Utility Marker (Gas Line)
 - ⊕ Manhole
 - SSCO Sanitary Sewer Cleanout
 - Tree
 - Water Line
 - UGT Underground Telephone ATT Distribution
 - Gas Line
 - UGE Underground Electricity
 - D Deeded
 - M Measured
 - P Platted

Legal Description
Parcel 1
The South 140.00 feet of the East 160.00 feet of Lot 24, Comotara Industrial Park Fifth Addition, an Addition to Wichita, Sedgwick County, Kansas.

State of Kansas)
County of Sedgwick)
I, Bradley C. Ward, a registered Land Surveyor in aforementioned County and State, do hereby certify that the accompanying map is true and correct to the best of my knowledge and that all monuments were either found or set.



Bradley C. Ward LS #920 11.5.13 date
Not original unless signed in blue ink

