

FINAL TRACING REC'D 3-29-13

# JOHNSON ESTATES

an Addition to Wichita, Sedgwick County, Kansas

State of Kansas) SS  
Sedgwick County)

Nebraska  
State of Kansas)  
Douglas SS  
Sedgwick County)

We, Ruggles & Bohm, P.A., Land Surveyors in aforesaid county and state, do hereby certify that, under the supervision of the undersigned, we have surveyed and platted "JOHNSON ESTATES", an Addition to Wichita, Sedgwick County, Kansas, being a replat of part of Mc Evoy Addition, and that the accompanying plat is a true and correct exhibit of the property surveyed, described as follows:

The foregoing instrument acknowledged before me this 22<sup>nd</sup> day of March, 2013, by Tera L. Schaecher, Senior Vice President of Bank of the West, on behalf of the Bank.

Lot 5, Block D, except the east 10 feet thereof for street purposes, Mc Evoy Addition, Sedgwick County, Kansas.

My appointment expires 2/12/2016.  
*Scott A Schmidt*, Notary Public  
SCOTT A SCHMIDT  
General Notary  
State of Nebraska  
My Commission Expires Feb 12, 2016

All public easements and dedications are hereby vacated by virtue of K.S.A. 12-512b, as amended.

*James D. Hestermann*, Land Surveyor  
Ruggles & Bohm, P.A.  
James D. Hestermann  
LAND SURVEYOR  
KANSAS  
2/4/2013

This plat of "JOHNSON ESTATES", an Addition to Wichita, Sedgwick County, Kansas, has been submitted to and approved by the Wichita-Sedgwick County Metropolitan Area Planning Commission, Wichita, Kansas.

Dated this \_\_\_ day of \_\_\_, 2013.  
Wichita-Sedgwick County Metropolitan Area Planning Commission  
Chair  
David Dennis  
Secretary  
John L. Schlegel

Know all men by these presents that we, the undersigned, have caused the land described in the surveyor's certificate to be platted into Lots and a Block, to be known as "JOHNSON ESTATES", an Addition to Wichita, Sedgwick County, Kansas. The utility easements are hereby granted for the construction and maintenance of all public utilities. A drainage plan has been developed for this plat and all drainage easements, rights-of-way, or reserves shall remain at established grades, or as modified with the approval of the City Engineer, and unobstructed to allow for the conveyance of stormwater. Access Controls have been granted by separate instrument, recorded as DOC.#FLM-PG: 29047683.

This plat approved and all dedications shown hereon accepted by the City Council of the City of Wichita, Kansas, this \_\_\_ day of \_\_\_, 2013.

Jay and Bonnie Johnson Living Trust dated May 27, 2010

*Jay W. Johnson*, Trustee  
*Bonnie A. Johnson*, Trustee  
Jay W. Johnson, Trustee  
Bonnie A. Johnson, Trustee

At the Direction of the City Council  
Mayor  
Carl Brewer  
City Clerk  
Karen Sublett

State of Kansas) SS  
Sedgwick County)

Reviewed in accordance with K.S.A. 58-2005 on this \_\_\_ day of \_\_\_, 2013.

The foregoing instrument acknowledged before me, this 8<sup>TH</sup> day of FEBRUARY, 2013, by Jay W. Johnson and Bonnie A. Johnson, Trustees of the Jay and Bonnie Johnson Living Trust dated May 27, 2010.

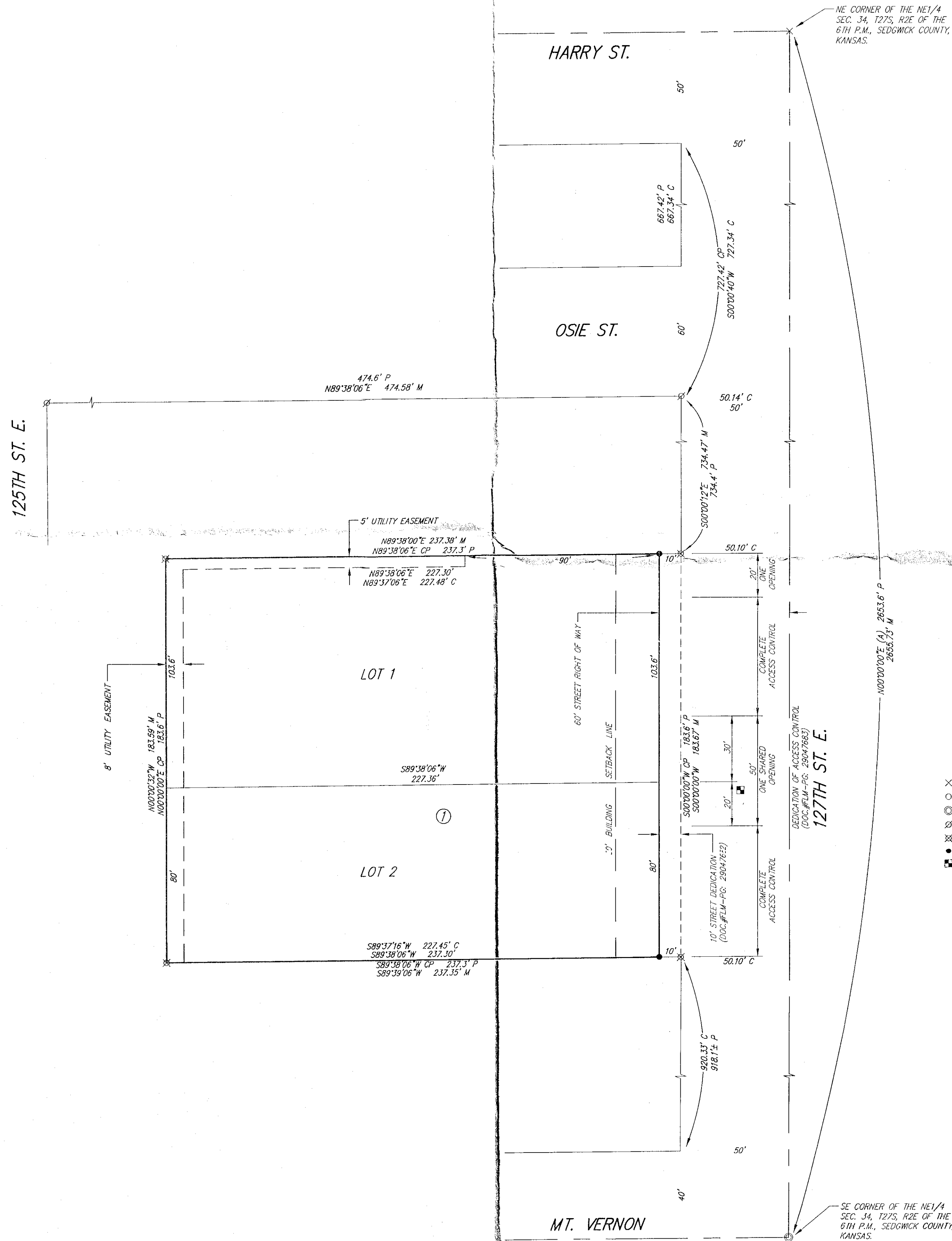
*William K. Clevenger*, Notary Public  
My appointment expires 11/15/16.  
WILLIAM K. CLEVENGER  
NOTARY PUBLIC  
STATE OF KANSAS  
My Appt. Exp. 11/15/16

Deputy County Surveyor  
Sedgwick County Kansas  
*Tricia L. Robello*, LS #1246  
Entered on transfer record this \_\_\_ day of \_\_\_, 2013.  
County Clerk  
*Kelly B. Arnold*

We the undersigned, holders of a mortgage on a portion of the above described property, do hereby consent to this plat of "JOHNSON ESTATES", an Addition to Wichita, Sedgwick County, Kansas.

*Tera L. Schaecher*, Senior Vice President  
Bank of the West  
Tera L. Schaecher

State of Kansas) SS  
Sedgwick County)  
This is to certify that this plat has been filed for record in the office of the Register of Deeds, this \_\_\_ day of \_\_\_, 2013, at \_\_\_ o'clock \_\_ M, and is duly recorded.  
Register of Deeds  
*Bill Meek*  
Deputy  
*Tonya Buckingham*



BENCHMARK: CHISELED SQUARE ON THE SOUTH END OF RCP, AT THE SOUTHERLY ENTRANCE TO 1807 S. 127TH ST. E. ELEVATION = 1341.28 (NAVD88)

(A) = Assumed Basis of Bearing  
P = Platted (McEvoy Addition)  
M = Measured  
C = Calculated  
D = Described  
CP = Calculated from Platted

SURVEY MARKER LEGEND

- × CHISELED CROSS (FOUND - ORIGIN UNKNOWN)
- 1/2" REBAR W/CAP (FOUND - ORIGIN UNKNOWN)
- REBAR WITH SEDGWICK COUNTY DISC (FOUND)
- 5/8" REBAR W/SRB CAP (FOUND)
- 1/2" REBAR W/RUGGLES & BOHM CAP (FOUND)
- 1/2" REBAR W/RUGGLES & BOHM CAP (FET)
- BENCH MARK