

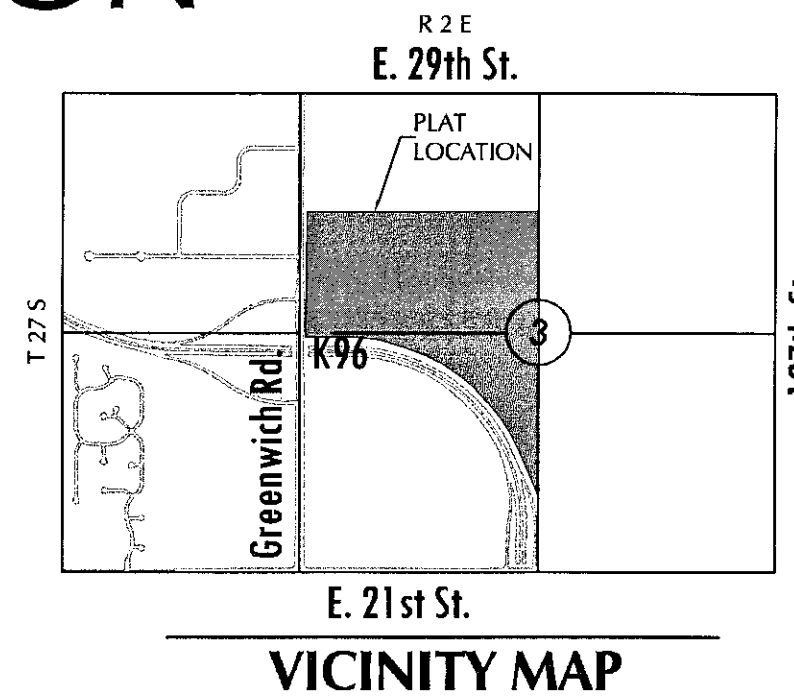
FINAL TRACING REC'D 8-15-13
 PW-ENGINEERING 4171
 X Jim Pfeiffer
 FOR MKEC FILE # 2238

FINAL PLAT

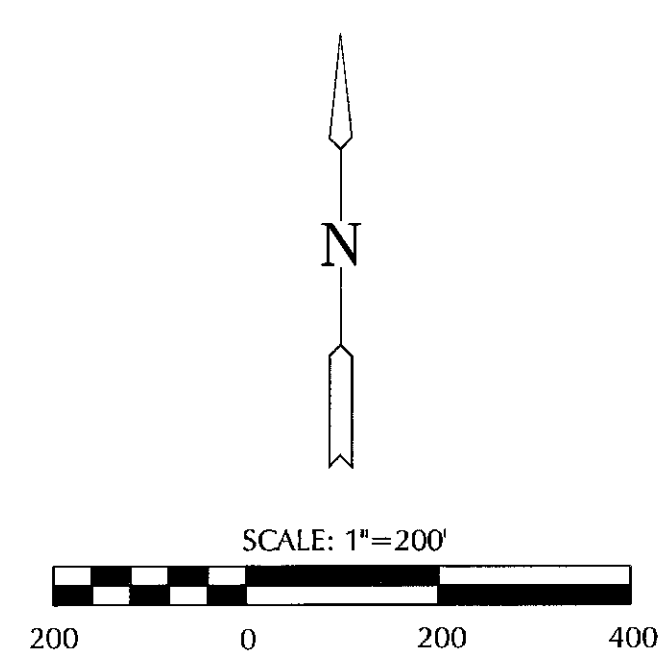
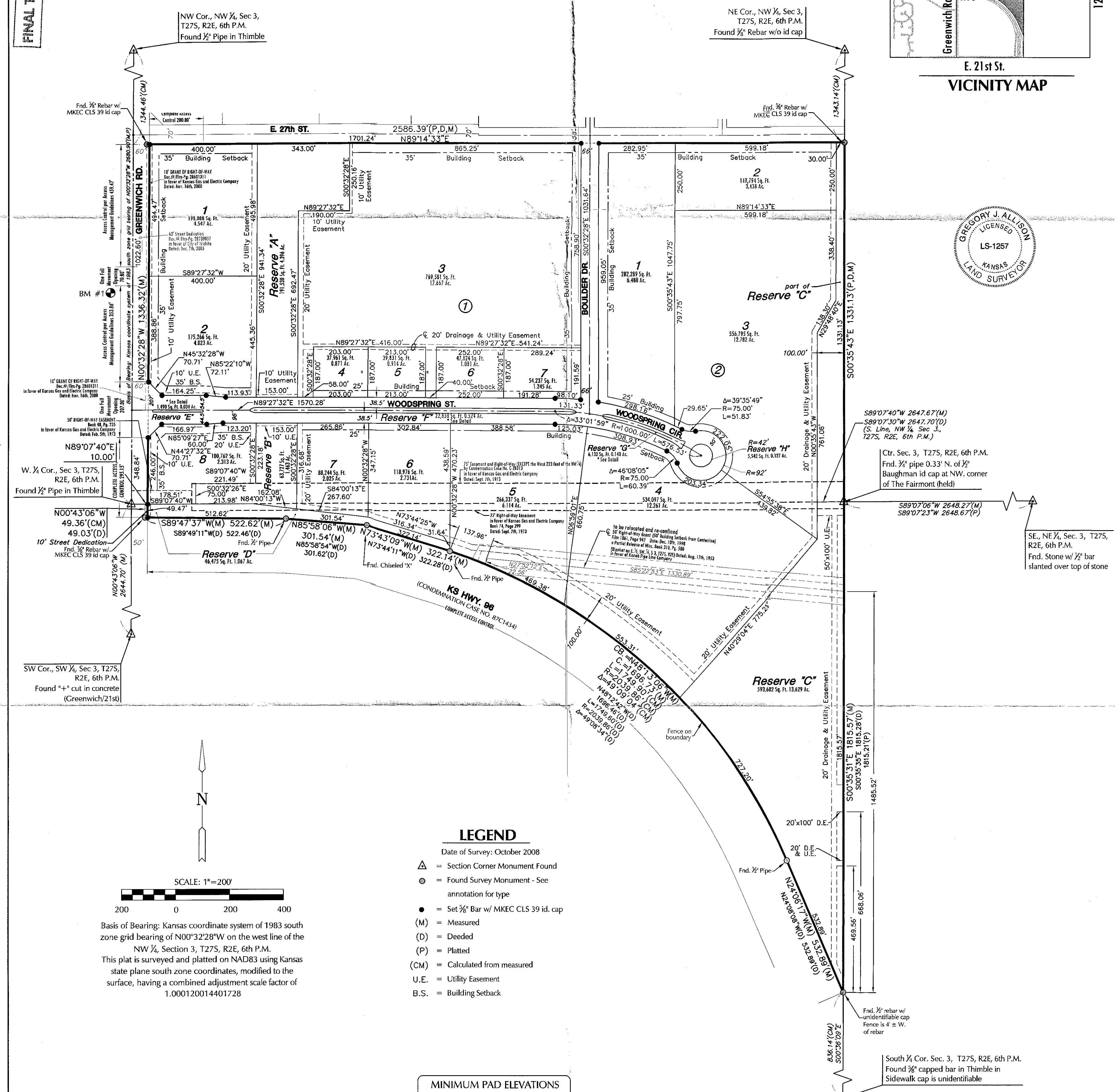
K96 AND GREENWICH NORTH ADDITION

AN ADDITION TO WICHITA, SEDGWICK COUNTY, KANSAS

A portion of the Northwest and Southwest Quarter, Section 3,
 Township 27 South, Range 2 East, of the 6th Principal Meridian



GREGORY J. ALLISON
 LICENSED
 LS-1257
 KANSAS
 LAND SURVEYOR



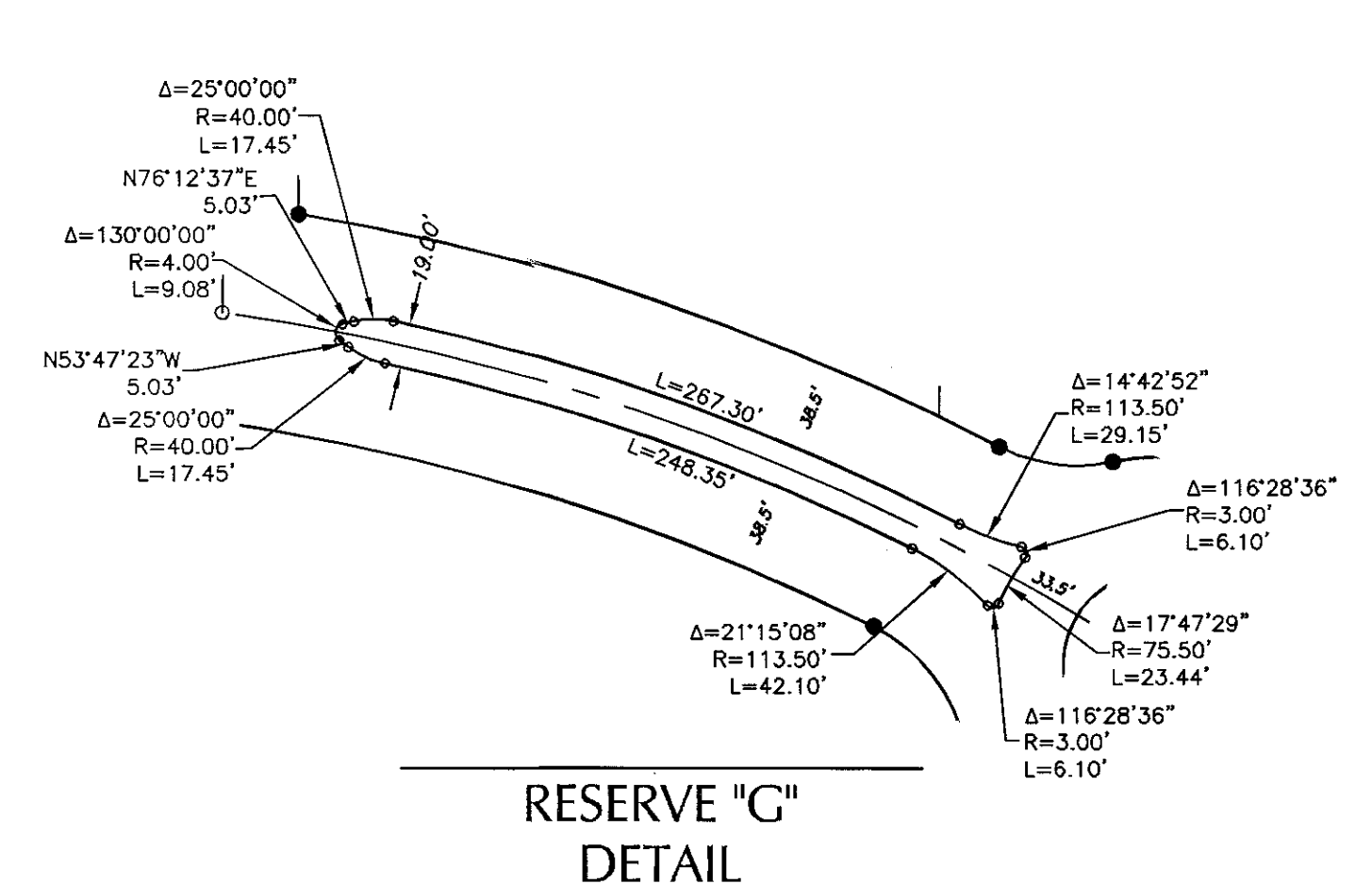
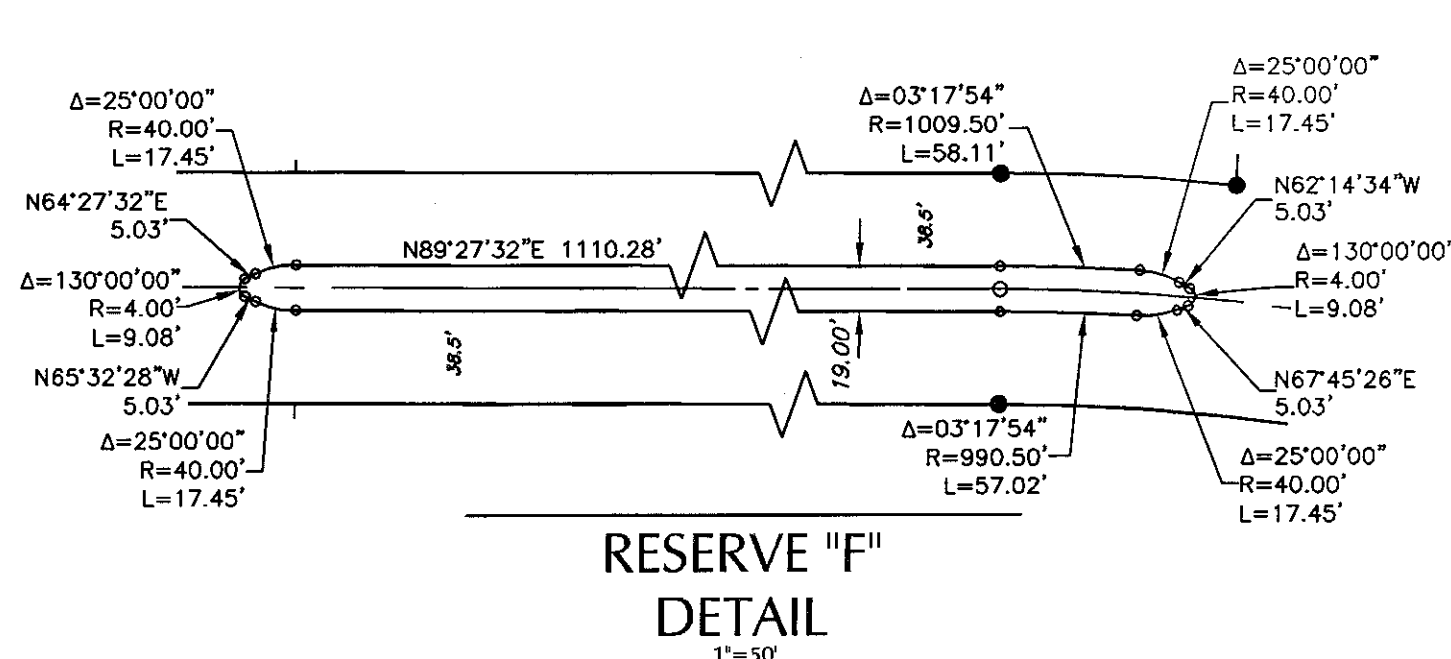
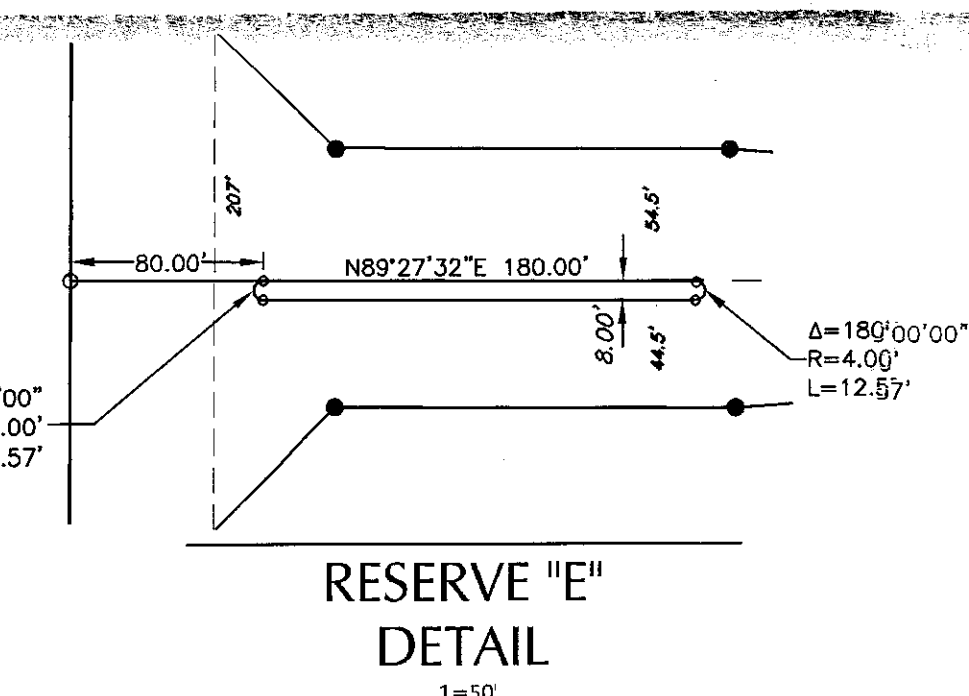
Basis of Bearing: Kansas coordinate system of 1983 south zone grid bearing of N07°32'28"W on the west line of the NW 1/4, Section 3, T27S, R2E, 6th P.M.
 This plat is surveyed and platted on NAD83 using Kansas state plane south zone coordinates, modified to the surface, having a combined adjustment scale factor of 1.000120014401728

LEGEND

- Date of Survey: October 2008
- △ = Section Corner Monument Found
 - = Found Survey Monument - See annotation for type
 - = Set 3/8" Bar w/ MKEC CLS 39 id. cap
 - (M) = Measured
 - (D) = Deeded
 - (P) = Platted
 - (CM) = Calculated from measured
 - U.E. = Utility Easement
 - B.S. = Building Setback

MINIMUM PAD ELEVATIONS LOWEST OPENINGS		
LOTS	BLOCK	ELEVATION NAVD 88
1, 2, 3, 4	1	1380.0
2, 3, 4	2	1381.1
7, 8	2	1375.0

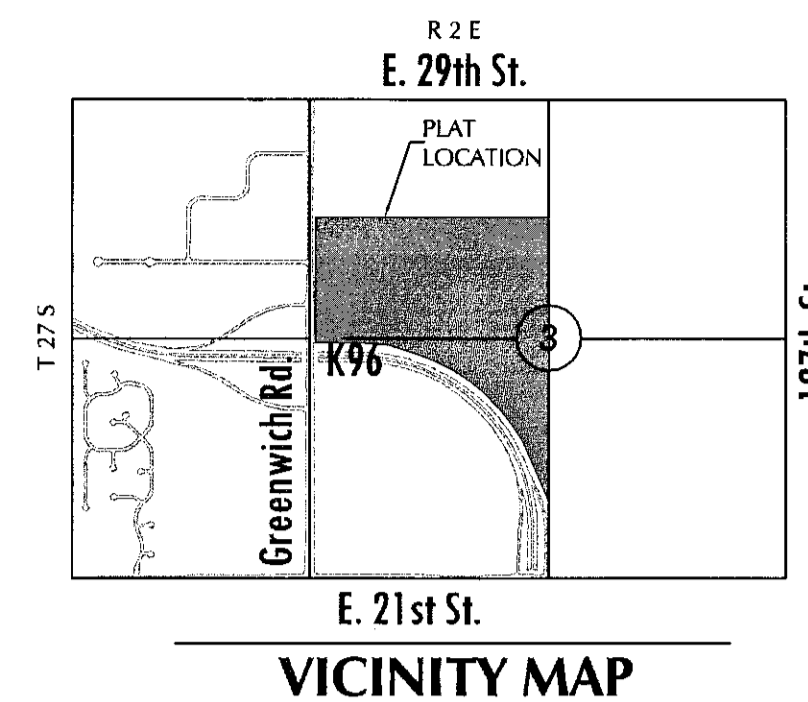
BENCHMARK
 BM #1 Brass disc in top of south curb of 26th Street North, 67' west of centerline Greenwich Road, 20' south of centerline 26th Street.
 Elev. = 1379.44 (NAVD 88)



FINAL PLAT K96 AND GREENWICH NORTH ADDITION

AN ADDITION TO WICHITA, SEDGWICK COUNTY, KANSAS

*A portion of the Northwest and Southwest Quarter, Section 3,
Township 27 South, Range 2 East, of the 6th Principal Meridian*



CERTIFICATE OF SURVEY

I, Gregory J. Allison, a registered land surveyor in Kansas, do hereby certify that I have been in responsible charge of surveying and plating of "K96 AND GREENWICH NORTH ADDITION," an addition to Wichita, Sedgwick County, Kansas, into Lots, Blocks, Reserves, and Streets the same being accurately set forth in the accompanying plat and described herein.

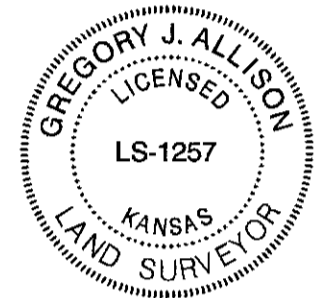
The South Half of the Northwest Quarter of Section 3, Township 27 South, Range 2 East of the Sixth Principal Meridian, Wichita, Sedgwick County, Kansas, EXCEPT that part dedicated for street right-of-way, TOGETHER WITH

A tract of land in the Southwest Quarter of Section 3, Township 27 South, Range 2 East of the Sixth Principal Meridian, Wichita, Sedgwick County, Kansas more particularly described as follows: COMMENCING at the Northwest corner of the Southwest Quarter of Section 3, Township 27 South, Range 2 East of the Sixth Principal Meridian, thence N89°07'30"E along the North line of said Southwest Quarter, a distance of 30.00 feet to the POINT OF BEGINNING; thence bearing N89°07'30"E along the North line of said Southwest Quarter, a distance of 2,597.70 feet to the Northeast corner of said Southwest Quarter; thence bearing S00°35'35"E along the East line of said Southwest Quarter, a distance of 1,815.28 feet to the intersection of the North Right of Way of K-96 Highway; thence along the North Right-of-Way of the K-96 Highway the following courses and distances: N24°08'08"W a distance of 532.89 feet to the Point of Curvature of a curve to the left with a radius of 2,039.86 feet and a chord distance of 1,696.46 feet bearing N48°12'42"W; thence along said curve to the left through a central angle of 49°08'34", an arc distance of 1,749.60 feet; thence bearing N73°44'11"W a distance 322.28 feet; thence bearing N85°58'54"W, a distance of 301.62 feet; thence bearing S89°49'11"W, a distance of 522.46 feet; thence bearing N00°43'07"W, parallel with the West line of said Southwest Quarter a distance of 49.03 feet to the POINT OF BEGINNING.

CONTAINING: 4,601,289 square feet or 105.63 acres of land, more or less.

All lots, blocks, streets, easements, setbacks, and access controls, together with an easement for water lines found on Film 1420, Pages 1540 & 1541, together with an easement for water lines found on Doc# Film Pg 28739054, together with a Sanitary Sewer easement found on Doc# Film Pg 28739052, together with all other public dedications or rights-of-way within the above described property are hereby vacated and replatted by virtue of K.S.A. 12-512b.

I hereby certify that the details of this plat are correct to the best of my knowledge and belief this ___ day of _____, 2013.



Gregory J. Allison, PE, LS #1257
MKEC Engineering Consultants, Inc.
411 North Webb Road
Wichita, Kansas 67206

OWNER'S CERTIFICATE

Know all men by these presents that we the undersigned property owner of the land above set forth in the Registered Land Surveyor's Certificate, has caused the same to be surveyed and platted into Lots, Blocks, Reserves, and Streets the same to be known as "K96 AND GREENWICH NORTH ADDITION," an addition to Wichita, Sedgwick County, Kansas.

This plat shall conform to the recitals of CUP DP-333

Easements for the construction and maintenance of public utilities and drainage, as indicated on the accompanying plat are hereby granted to the public.

All streets are hereby dedicated to and for the use of the public.

A drainage plan has been developed for this plat. All drainage easements, rights-of-way, or reserves shall remain at established grades or as modified with the approval of the applicable City or County Engineer, and unobstructed to allow for the conveyance of stormwater.

All abutters rights of access to or from Greenwich Road, over and across the west line of "K96 and Greenwich North Addition", are hereby granted to the appropriate governing body as indicated hereon. All abutters rights of access to or from Kansas Highway 96, over and across the south line of "K96 and Greenwich North Addition", are hereby granted to the appropriate governing body as indicated hereon. Access controls are dedicated to and for the use of the public.

Lots 1-4, Block 1, and Lots 3, 4, 7, 8, Block 2, are required to adhere to the minimum pad elevations as shown on the "Minimum Pad Elevations" table.

Reserves "A", "B", "C", "D", "E", "F", and "G" are platted for monuments, signs, landscaping, berming, sidewalks, irrigation, open space, and utilities provided easements are granted. Reserves "A", "B", and "C" are also platted for drainage. Reserve "D" is also platted for drainage and street related (slope grading) purposes including street maintenance, and private parking. Reserves "E", "F", and "G" shall allow for public access across said reserves, at various locations for driveways, as approved by the City Engineer. The Reserves shall be owned and maintained by the Lot owners or homeowners association.

Medical Practice Association Properties, LLC, a Kansas Limited Liability Company

_____, Manager
Lorene Valentine, Manager

STATE OF KANSAS, SEDGWICK COUNTY) SS:

This instrument was acknowledged before me on ___ day of _____, 2013, by Lorene Valentine, Manager, Medical Practice Association Properties, LLC, a Kansas Limited Liability Company.

IN WITNESS WHEREOF, I have hereunto set my hand and affixed my official seal, the day and year last above written.

_____, Notary Public
Notary Public:
My Term Expires: _____

Wichita Destination Developers, Inc.,
a Kansas corporation

_____, President
Michael J. Boyd, President

STATE OF KANSAS, SEDGWICK COUNTY) SS:

This instrument was acknowledged before me on ___ day of _____, 2013, by Michael J. Boyd, President, Wichita Destination Developers, Inc., a Kansas corporation.

IN WITNESS WHEREOF, I have hereunto set my hand and affixed my official seal, the day and year last above written.

_____, Notary Public
Notary Public:
My Term Expires: _____

MORTGAGE CERTIFICATE

Bank of Kansas, holder of a mortgage on the above described property, does hereby consent to the plat of "K96 AND GREENWICH NORTH ADDITION."

BANK OF KANSAS

_____, Branch President
Pat Gearhart, Branch President

STATE OF KANSAS, SEDGWICK COUNTY) SS:

This instrument was acknowledged before me on ___ day of _____, 2013, by Pat Gearhart, Branch President, Bank of Kansas.

IN WITNESS WHEREOF, I have hereunto set my hand and affixed my official seal, the day and year last above written.

_____, Notary Public
Notary Public:
My Term Expires: _____

VICINITY MAP

TRANSFER RECORD

STATE OF KANSAS, SEDGWICK COUNTY) SS:

Entered on transfer record this ___ day of _____, 2013.

_____, County Clerk
Kelly B. Arnold, County Clerk

PLANNING COMMISSION CERTIFICATE

STATE OF KANSAS, SEDGWICK COUNTY) SS:

This plat of "K96 AND GREENWICH NORTH ADDITION" has been submitted to and approved by the Wichita-Sedgwick County Metropolitan Area Planning Commission, Wichita, Kansas.

Dated this ___ day of _____, 2013.

WICHITA-SEDGWICK COUNTY METROPOLITAN AREA PLANNING COMMISSION

_____, Chairman
David Dennis, Chairman

Attest:
_____, Secretary
John L. Schlegel, Secretary *Atts: M-APC Seal*

REGISTER OF DEEDS CERTIFICATE

STATE OF KANSAS, SEDGWICK COUNTY) SS:

This is to certify that this instrument was filed for record in the Register of Deeds office this day of _____, 2013, at _____ o'clock _____ M; and is duly recorded.

_____, Register of Deeds
Bill Meek, Register of Deeds

Attest:
_____, Deputy
Tonya E. Buckingham, Deputy

COUNTY SURVEYOR

STATE OF KANSAS, SEDGWICK COUNTY) SS:

Reviewed in accordance with K.S.A. 58-2005 on this ___ day of _____, 2013.

_____, Deputy County Surveyor
Tricia L. Robello, LS #1246
Deputy County Surveyor
Sedgwick County, Kansas

GOVERNING BODY CERTIFICATE

STATE OF KANSAS, SEDGWICK COUNTY) SS:

The dedications shown on this plat are hereby accepted and this plat is hereby approved by the governing body of the City of Wichita, Kansas.

Dated this ___ day of _____, 2013.

At the direction of the City Council.

_____, Mayor
Carl Brewer, Mayor *Atts: City Seal*

Attest:
_____, City Clerk
Karen Sublett, City Clerk