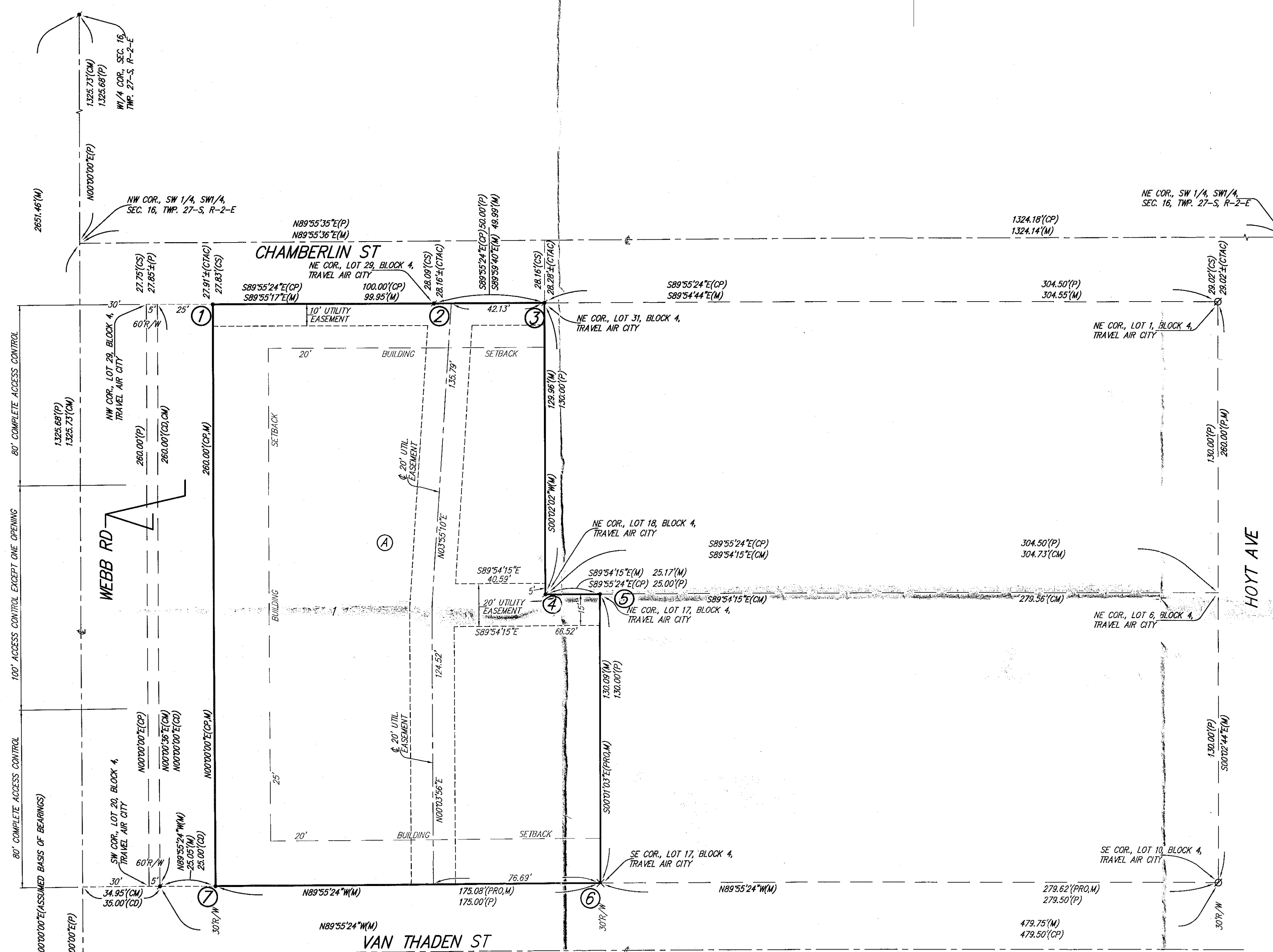


# TRAVEL AIR CITY 2ND ADDITION

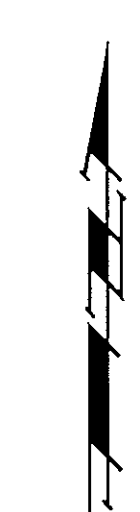
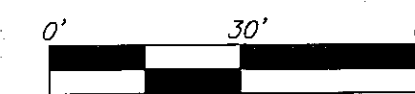
## WICHITA, SEDGWICK COUNTY, KANSAS

PW-ENGINEERING 1-71  
Kim Pelton  
FOR YOUR FILES

FINAL TRACING REC'D 9-23-13



- = #4 REDAR W/ "BAUGHMAN" CAP (SET)
  - = #4 REDAR W/ "BAUGHMAN" CAP (FOUND)
  - = 3/4" IRON (FOUND)
  - △ = #5 REDAR W/ "BAUGHMAN" CAP OVER STONE (FOUND)
  - ⊠ = CHISELED CROSS (FOUND)
  - × = CHISELED CROSS (SET)
- (M) = MEASURED  
(P) = PLATTED  
(CP) = CALCULATED PER PLATTED INFO.  
(CM) = CALCULATED PER MEASURED INFO.  
(CD) = CALCULATED PER DESCRIBED INFO.  
(PRO) = PROGRAED MEASUREMENT  
(CTAC) = CALCULATED PER PLAT OF TRAVEL AIR CITY  
(CS) = CALCULATED DISTANCE TO SOUTH LINE, NW 1/4, SW 1/4, SEC. 16, TWP. 27-S, R-2-E



NOTE:  
EXISTING ENVIRONMENTAL EASEMENT AND USE RESTRICTION TO AND FOR THE BENEFIT OF RAYTHEON AIRCRAFT COMPANY, (1/4) BEECH AIRCRAFT CORPORATION, RECORDED ON FILM 1810 AT PAGE 540 AFFECTS PART OF THE SOUTHERLY PORTION OF LOT 1, BLOCK 4, TRAVEL AIR CITY 2ND ADDITION.

NOTE:  
A drainage plan has been developed for this subdivision and is on file with the City of Wichita, Kansas. Drainage intent shall remain as depicted or as modified with the approval of the City Engineer of the City of Wichita, Kansas. No obstructions which impede the flow of this drainage plan shall be allowed.

State of Kansas) SS We, Baughman Company, P.A., Surveyors in Sedgwick County) and state do hereby certify that we have surveyed and platted "TRAVEL AIR CITY 2ND ADDITION", Wichita, Sedgwick County, Kansas and that the accompanying plat is a true and correct exhibit of the property surveyed, described as and being a replat of Lots 17, 18, 19, 20, 21, 22, 23, 24, 25, 26, 27, 28, 29, 30, and 31, Block 4, Travel Air City, Sedgwick County, Kansas.

All being situated in the Southwest Quarter of Section 16, Township 27 South, Range 2 East of the Sixth Principal Meridian, Sedgwick County, Kansas.

Existing public easements and dedications being vacated by virtue of K.S.A. 12-512b, as amended.

Baughman Company, P.A.

This plat of "TRAVEL AIR CITY 2ND ADDITION", Wichita, Sedgwick County, Kansas has been submitted to and approved by the Wichita-Sedgwick County Metropolitan Area Planning Commission, Wichita, Kansas.

Dated this \_\_\_\_\_ day of \_\_\_\_\_, 2013.  
Wichita-Sedgwick County Metropolitan Area Planning Commission

\_\_\_\_\_, Chair  
David Dennis

\_\_\_\_\_, Secretary  
John L. Schlegel

\_\_\_\_\_, Surveyor  
Michael G. Conrey

This plat approved and all dedications shown hereon accepted by the City Council of the City of Wichita, Kansas, this \_\_\_\_\_ day of \_\_\_\_\_, 2013.

\_\_\_\_\_, Mayor  
Carl Brewer

\_\_\_\_\_, City Clerk  
Karen Sublett

Know all men by these presents that we, the undersigned, have caused the land in the surveyors certificate to be platted into a Lot, a Block, and a Street, to be known as "TRAVEL AIR CITY 2ND ADDITION", Wichita, Sedgwick County, Kansas. The utility easements are hereby granted as indicated for the construction and maintenance of all public utilities. The street is hereby dedicated to and for the use of the public. Access controls shall be as depicted on the face of the plat and are hereby granted to the City of Wichita, Kansas. The permitted opening location shall be as determined by the City Engineer of the City of Wichita, Kansas.

Triple J of Wichita, L.L.C.,  
a Kansas limited liability company

\_\_\_\_\_, General Counsel  
Morgan B. Koon

Reviewed in accordance with K.S.A. 58-2005 on this \_\_\_\_\_ day of \_\_\_\_\_, 2013.

\_\_\_\_\_, Deputy County Surveyor  
Tricia L. Robello, L.S. #1246  
Sedgwick County, Kansas

Entered on transfer record this \_\_\_\_\_ day of \_\_\_\_\_, 2013.

\_\_\_\_\_, County Clerk  
Kelly B. Arnold

State of Kansas) SS The foregoing instrument acknowledged before me, this \_\_\_\_\_ day of \_\_\_\_\_, 2013, by Morgan B. Koon, General Counsel for Triple J of Wichita, L.L.C., a Kansas limited liability company, on behalf of the limited liability company.

\_\_\_\_\_, Notary Public

My App't. Exp. \_\_\_\_\_

State of Kansas) SS This is to certify that this plat has been filed for record in the office of the Register of Deeds, this \_\_\_\_\_ day of \_\_\_\_\_, 2013 at \_\_\_\_\_ o'clock \_\_\_\_\_ M.; and is duly recorded.

\_\_\_\_\_, Register of Deeds  
Bill Meek

\_\_\_\_\_, Deputy  
Tonya Buckingham

**Baughman Company, P.A.**  
315 Ellis St., Wichita, KS 67211 P 316-262-7271 F 316-262-0149  
Baughman ENGINEERING | SURVEYING | PLANNING | LANDSCAPE ARCHITECTURE