

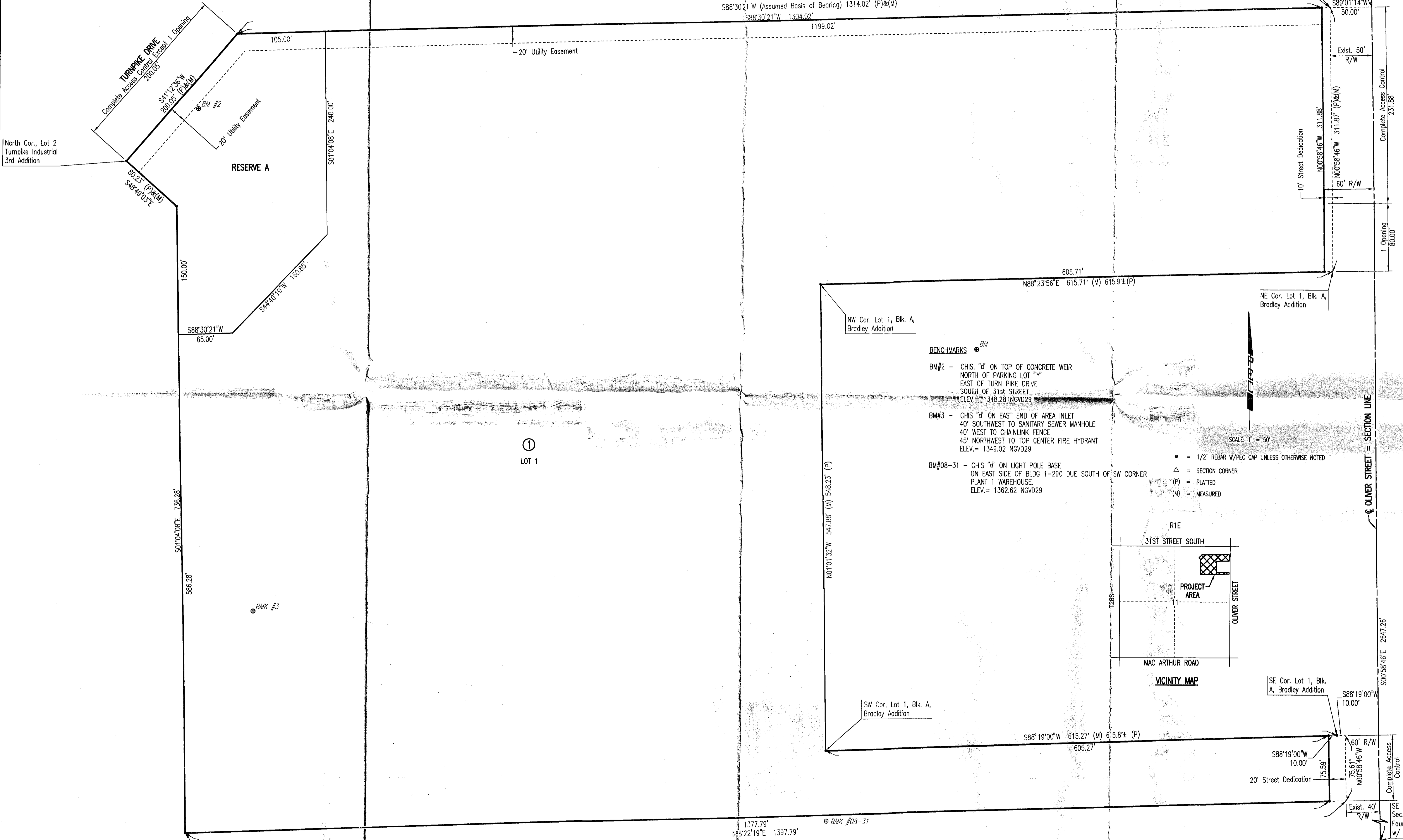
TURNPIKE INDUSTRIAL 4TH ADDITION

AN ADDITION TO WICHITA, SEDGWICK COUNTY, KANSAS

NE Cor. Sec. 11,
T28S, R1E
Found 3/4" Iron Pipe

Point of Beginning
Northeast Corner, Lot 1
Turnpike Industrial Park
3rd Addition

S88°30'21"W (Assumed Basis of Bearing) 1314.02' (P)&(M)
S88°30'21"W 1304.02'



North Cor., Lot 2
Turnpike Industrial
3rd Addition

RESERVE A

①
LOT 1

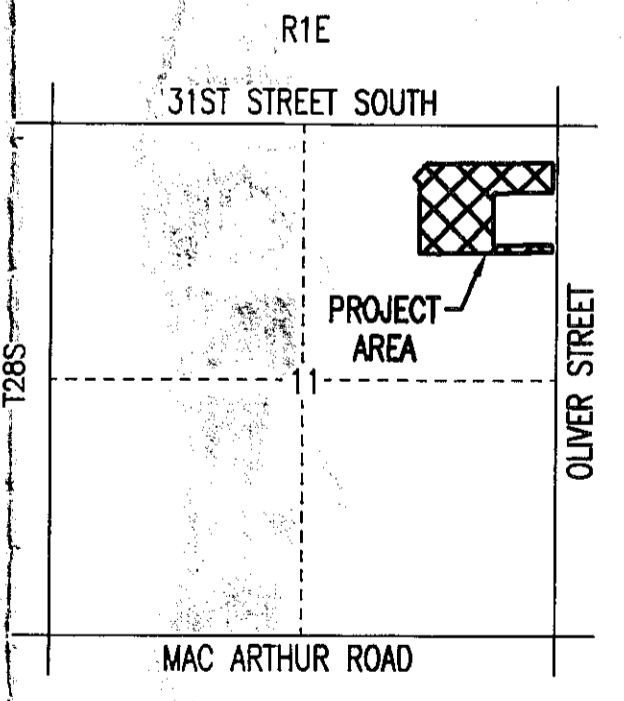
NW Cor. Lot 1, Blk. A,
Bradley Addition

NE Cor. Lot 1, Blk. A,
Bradley Addition

BENCHMARKS \odot BM

- BM#2 - CHIS. "d" ON TOP OF CONCRETE WEIR
NORTH OF PARKING LOT "Y"
EAST OF TURN PIKE DRIVE
SOUTH OF 31st STREET
ELEV. = 1348.28 NGVD29
- BM#3 - CHIS. "d" ON EAST END OF AREA INLET
40' SOUTHWEST TO SANITARY SEWER MANHOLE
40' WEST TO CHAINLINK FENCE
45' NORTHWEST TO TOP CENTER FIRE HYDRANT
ELEV. = 1349.02 NGVD29
- BM#08-31 - CHIS. "d" ON LIGHT POLE BASE
ON EAST SIDE OF BLDG 1-290 DUE SOUTH OF SW CORNER
PLANT 1 WAREHOUSE.
ELEV. = 1362.62 NGVD29

- = 1/2" REBAR W/PEC CAP UNLESS OTHERWISE NOTED
- △ = SECTION CORNER
- (P) = PLATTED
- (M) = MEASURED



VICINITY MAP

SW Cor. Lot 1, Blk. A,
Bradley Addition

SE Cor. Lot 1, Blk.
A, Bradley Addition

1377.79'
188°22'19"E 1397.79'

BM#08-31

SE Cor., NE 1/4
Sec. 11, T28S, R1E
Found 1/2" Bar
w/ PEC Cap