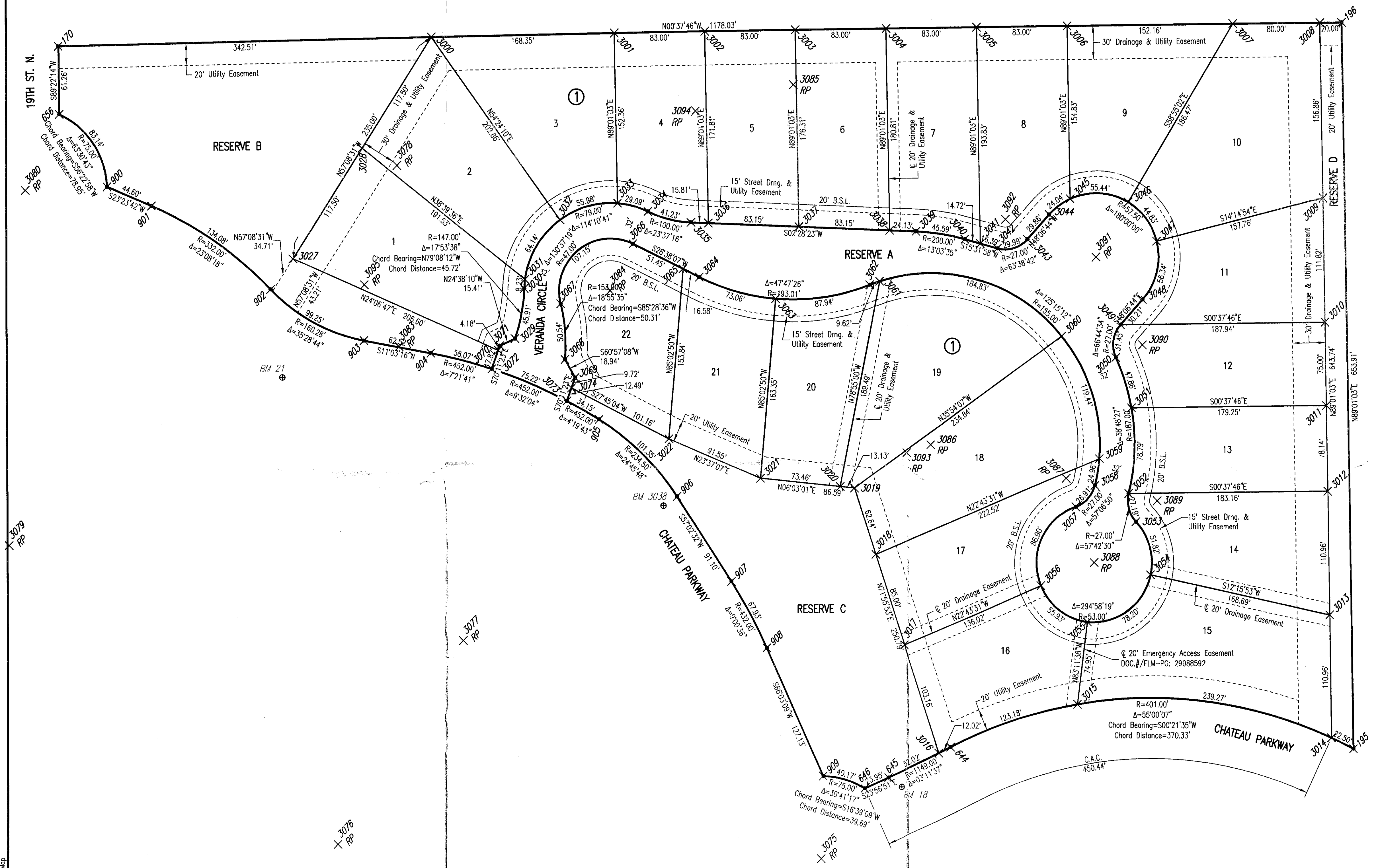


FINAL TRACING REC'D 1-2-14 **GLEN MEADOWS 2ND ADDITION**  
 TO WICHITA, SEDGWICK COUNTY, KANSAS  
 BUBBLE MAP



SCALE: 1" = 50'

- = 1/2" REBAR W/PEC CAP UNLESS OTHERWISE NOTED
- ⊕ BM 18 = BENCHMARK

**BENCHMARKS**

- BM #18  
CHISELED SQUARE ON CENTER FACE OF CURB INLET ON WEST SIDE OF CHATEAU PARKWAY, 600' SOUTH OF 21ST STREET NORTH NEAR NORTHWEST CORNER GLENVIEW ADDITION.  
ELEV. = 1379.13 NAVD88
- BM #3038  
BRASS DISC ON TOP OF WEST CURB OF CHATEAU PARKWAY, 165 FEET NORTH OF GLENVIEW CIRCLE.  
ELEV. = 1384.60 NAVD88
- BM #21  
CHISELED SQUARE ON WEST SIDE OF CONCRETE BASE FOR LIGHT POLE ON EAST SIDE OF CHATEAU PARKWAY NEAR SOUTHWEST CORNER OF GLENVIEW ADDITION, 1200± SOUTH OF 21ST STREET NORTH.  
ELEV. = 1390.30 NAVD88

Saved 12-31-2013 12:28:08 PM by JIS  
 Plot Scale 1/80 12-31-2013 1:05:16 PM by JOSH SULLIVAN  
 C:\2013\1388\001\1388-001 Glen Meadows 2nd Bubble Map