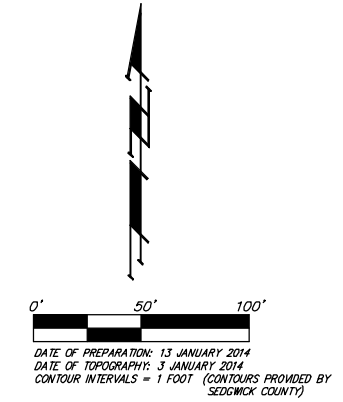
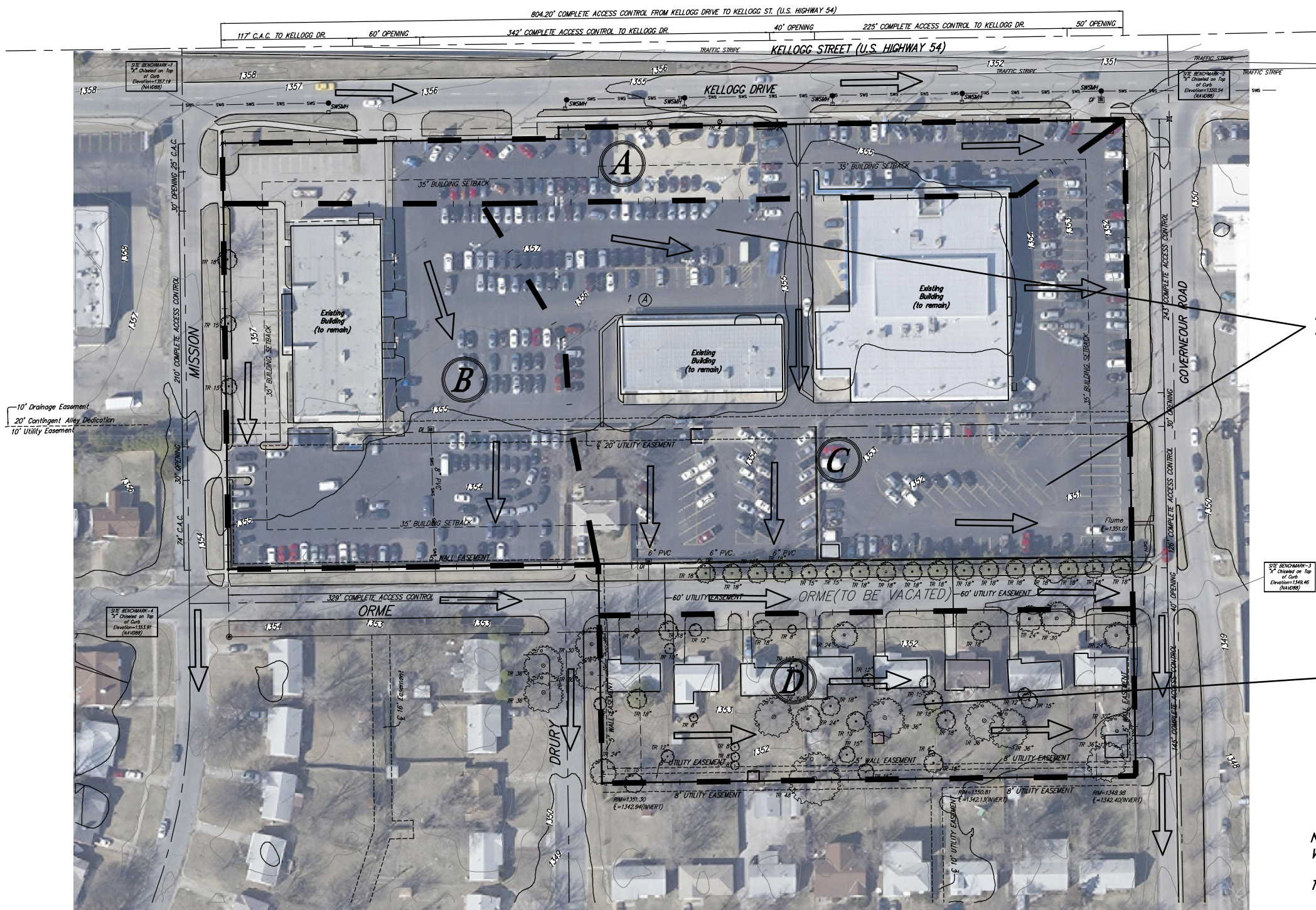


DRAINAGE CONCEPT

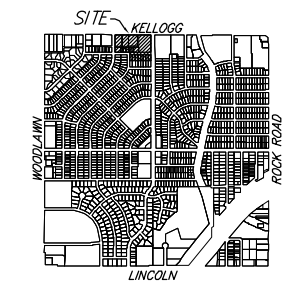
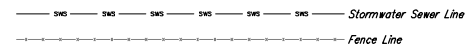
SCHOLFIELD HONDA COMMERCIAL ADDITION

WICHITA, SEDGWICK COUNTY, KANSAS



- ⊛ = #4 REBAR W/ "BAUGHMAN" CAP (FOUND)
- ⊙ = #4 REBAR W/ "BAUGHMAN" CAP (SET)
- ⊚ = 3/4" IRON (FOUND)
- ⊗ = #4 REBAR (FOUND)
- = 1/2" IRON (FOUND)
- ⊠ = CROSS CUT (FOUND)

- ⊕ = Drop Inlet
- ⊙ = Stormwater Sewer Manhole
- TR ⊙ = Tree



VICINITY MAP
SEC. 30, T27S, R2E

EXISTING PAVEMENT AND BUILDINGS TO REMAIN

CURRENT RESIDENTIAL AREA TO BE CONVERTED TO PAVED PARKING

NOTES: This area is located in a FEMA Zone X as of this date per FEMA FIRM Panel 367 of 700, for Wichita, Sedgwick County, Kansas, effective February 2, 2007.
The internal Storm Water Sewer is existing and drains to the south and into the adjacent street ROW(s).

A	B	C	D						
FRONTAGE	WEST SIDE	MIDDLE & EAST	PROPOSED SOUTH EXPANSION						
DA = 1.1 acres Impervious = 96% C = 0.89	DA = 2.1 acres Impervious = 99% C = 0.93	DA = 4.4 acres Impervious = 99% C = 0.93	<table border="1" style="width: 100%; border-collapse: collapse;"> <thead> <tr> <th style="text-align: center;">EXISTING</th> <th style="text-align: center;">DEVELOPED</th> </tr> </thead> <tbody> <tr> <td style="text-align: center;">DA = 1.6 acres Impervious = 27% C = 0.63</td> <td style="text-align: center;">DA = 1.6 acres Impervious = 99% C = 0.93</td> </tr> <tr> <td style="text-align: center;">Q₂ = 3.9 cfs Q₅ = 4.6 cfs Q₁₀ = 5.3 cfs Q₁₀₀ = 7.4 cfs</td> <td style="text-align: center;">Q₂ = 5.7 cfs Q₅ = 6.8 cfs Q₁₀ = 7.8 cfs Q₁₀₀ = 11 cfs</td> </tr> </tbody> </table>	EXISTING	DEVELOPED	DA = 1.6 acres Impervious = 27% C = 0.63	DA = 1.6 acres Impervious = 99% C = 0.93	Q ₂ = 3.9 cfs Q ₅ = 4.6 cfs Q ₁₀ = 5.3 cfs Q ₁₀₀ = 7.4 cfs	Q ₂ = 5.7 cfs Q ₅ = 6.8 cfs Q ₁₀ = 7.8 cfs Q ₁₀₀ = 11 cfs
EXISTING	DEVELOPED								
DA = 1.6 acres Impervious = 27% C = 0.63	DA = 1.6 acres Impervious = 99% C = 0.93								
Q ₂ = 3.9 cfs Q ₅ = 4.6 cfs Q ₁₀ = 5.3 cfs Q ₁₀₀ = 7.4 cfs	Q ₂ = 5.7 cfs Q ₅ = 6.8 cfs Q ₁₀ = 7.8 cfs Q ₁₀₀ = 11 cfs								
Q ₂ = 3.7 cfs Q ₅ = 4.5 cfs Q ₁₀ = 5.1 cfs Q ₁₀₀ = 7.2 cfs	Q ₂ = 7.5 cfs Q ₅ = 8.9 cfs Q ₁₀ = 10 cfs Q ₁₀₀ = 14 cfs	Q ₂ = 16 cfs Q ₅ = 19 cfs Q ₁₀ = 21 cfs Q ₁₀₀ = 30 cfs							

AREA D: Parking lot expansion in Basin D will require detention to limit the peak runoff to that of at least existing conditions. This area drains to the east and into Governour Avenue.

Upon site development, due to the redevelopment area being greater than 1 acre, this area will also need to meet City of Wichita Ordinance 14.32 pertaining to water quality treatment. Since this area is a redevelopment, water quality treatment will be provided for 30% of the existing impervious area and 100% of any additional impervious area.

DRAINAGE CONCEPT
SCHOLFIELD HONDA COMMERCIAL ADDITION
16 JANUARY 2014

Baughman Company, P.A.
315 Ellis St. Wichita, KS 67211 P 316-262-7271 F 316-262-0149

Baughman ENGINEERING | SURVEYING | PLANNING | LANDSCAPE ARCHITECTURE

B:\Projects\Scholfield Honda Commercial Addition_1301P661\Wor_Planroom\Schollfield_P_Drain.dwg