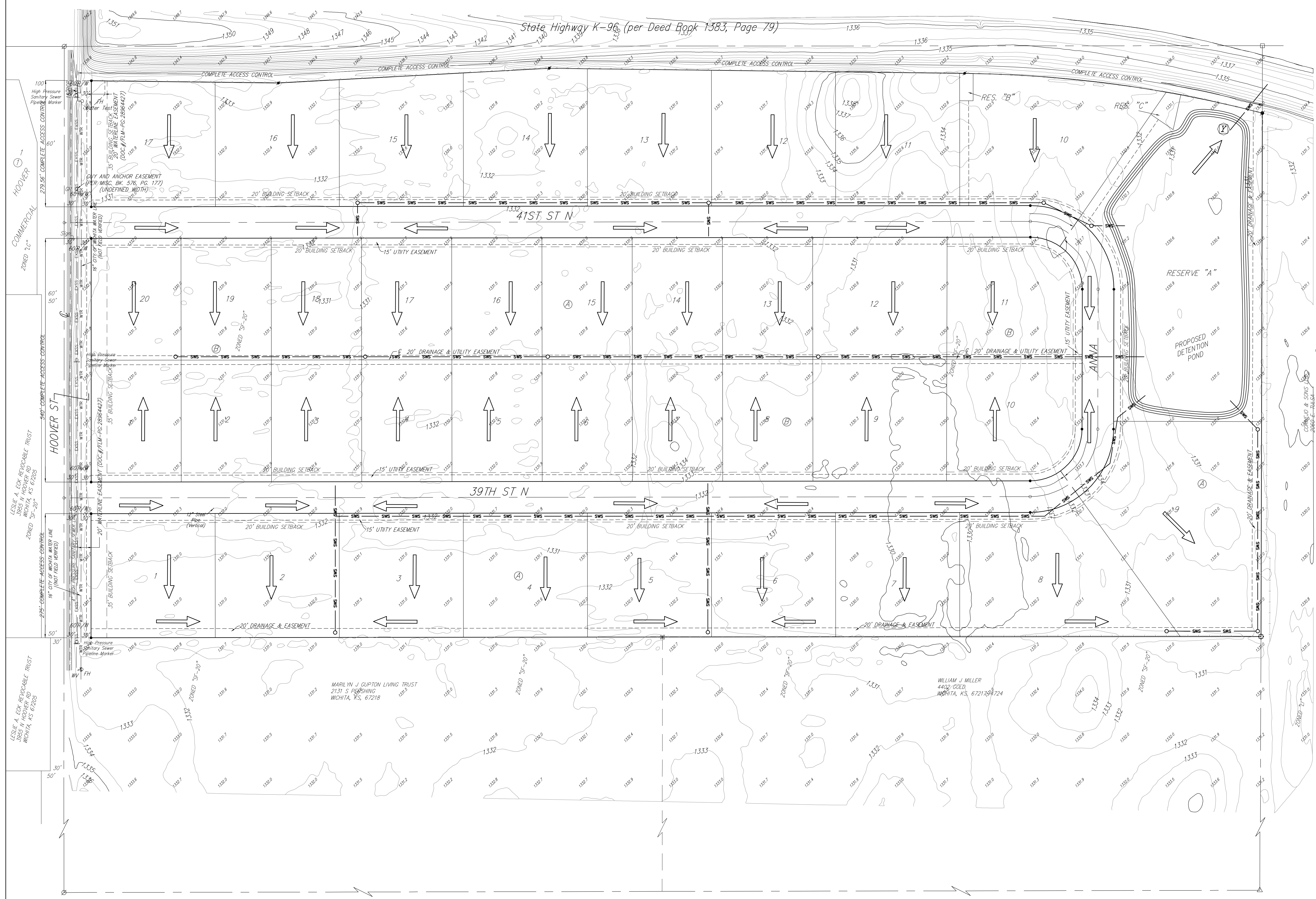


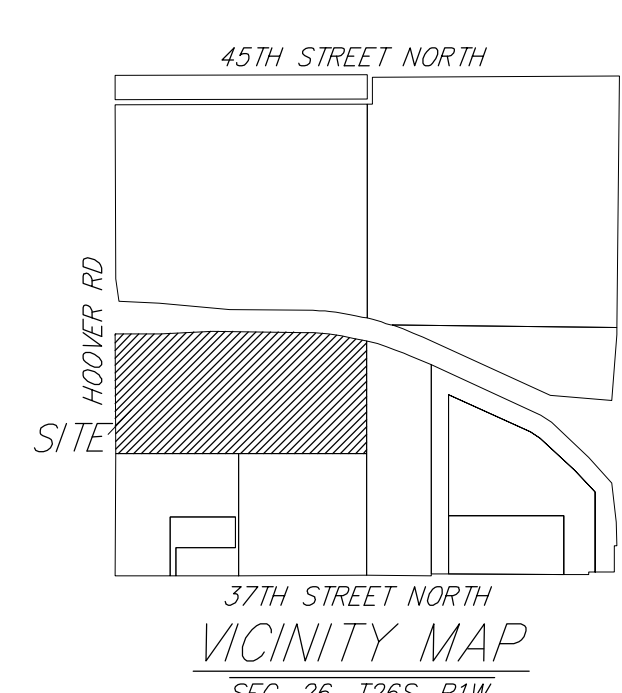
DRAINAGE CONCEPT

HOOVER INDUSTRIAL PARK ADDITION

SEDGWICK COUNTY, KANSAS



DATE OF PREPARATION: 16 JANUARY 2014
 DATE OF TOPOGRAPHY: 11 SEPTEMBER 2013
 CONTOUR INTERVALS = 1 FOOT (CONTOURS PROVIDED BY SEDGWICK COUNTY)



- = #4 Baughman Rebar Set
 - = 1/2" Iron Pipe Found (Origin Unknown)
 - △ = 3/4" Iron Pipe Found (Origin Unknown)
 - = #5 Rebar Found
 - ⊙ = #5 Garber Rebar Found
 - ⊗ = 3/4" Moehring Capped Iron Pipe Found
 - ⊠ = #4 Armstrong Capped Rebar Found
- (C) = Calculated
 CH = Chord Length
 CH BR = Chord Bearing
 Δ = Delta Angle
 D = Degree of Curve
 (D) = Described
 L = Arc Length
 (M) = Measured
 (P) = Platted
 (Pro) = Prorated
 R = Radius

- FH ○ = Fire Hydrant
 GP ○ = Guy Pole
 C = Guy = Guy Anchor
 Sign ○ = Sign
 WV = Water Valve
- Asphalt
 - Concrete
 - Gravel/Rock

WTR	WTR	WTR	WTR
AT&T	SOUTHWESTERN BELL	AT&T	AT&T
GAS	GAS	GAS	GAS
CoTV	CoTV	CoTV	CoTV
FENCE			
OPENING IN FENCE LINE			
USE			
PIPELINE			

NOTES: There is no FEMA SFHA located on this property as of this date per FEMA Form Panel 195 of 700, for Wichita, Sedgwick County, Kansas; effective February 2, 2007.

The Internal Storm Sewer, preliminarily as shown herein, will be sized and final location approved during the site plan process.

Water quality will be provided on site in the detention pond area. Channel protection will likely be achieved through the pump discharge sling of the detention area.

DRAINAGE CONCEPT

HOOVER INDUSTRIAL PARK ADDITION