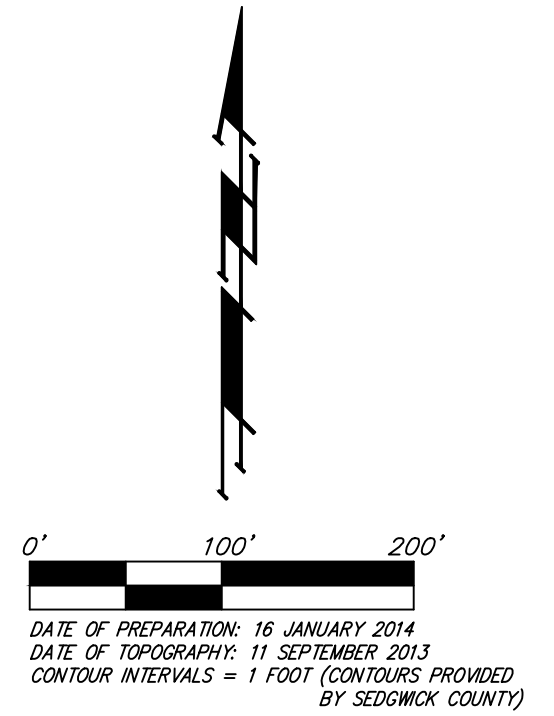
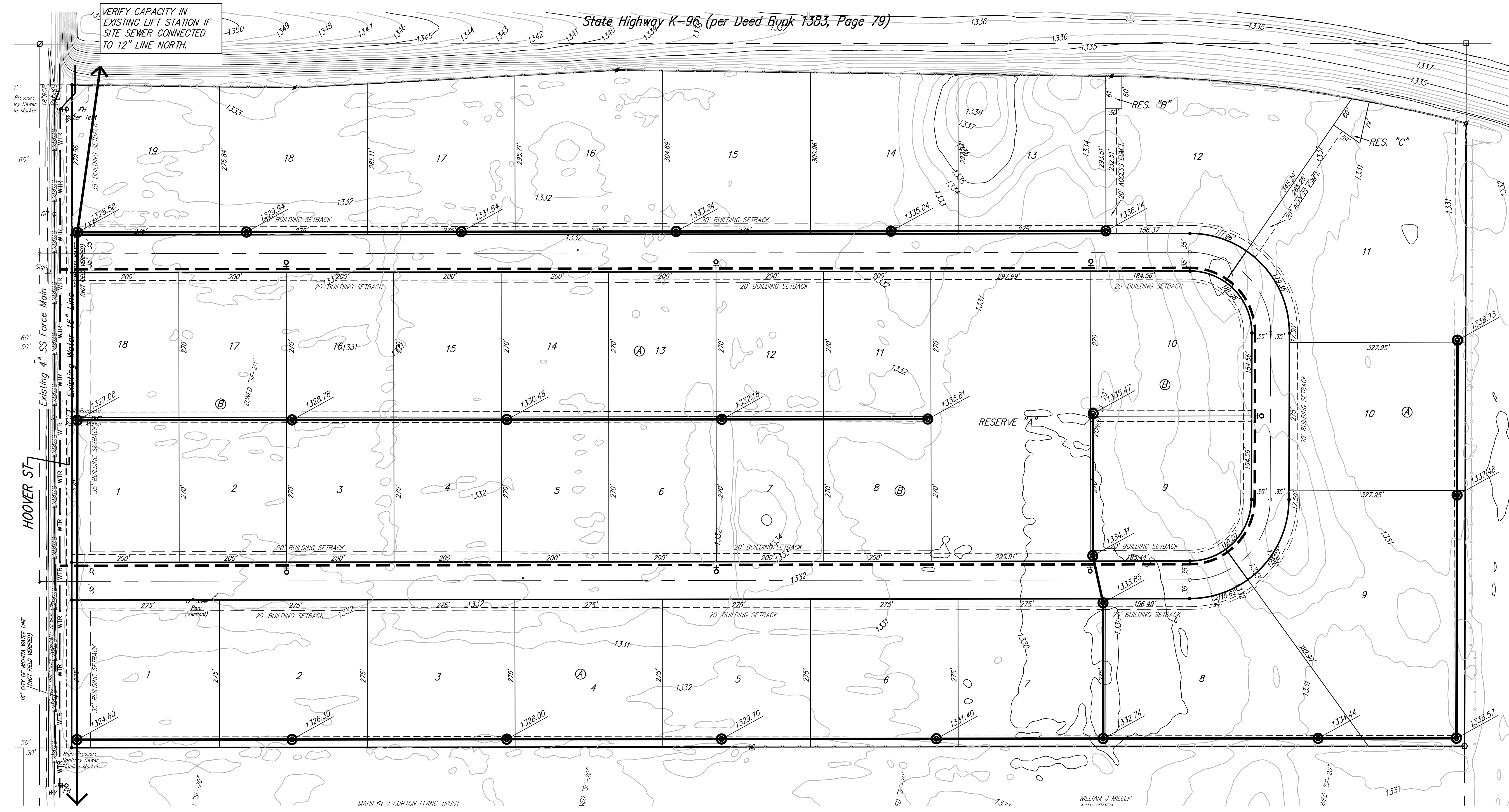


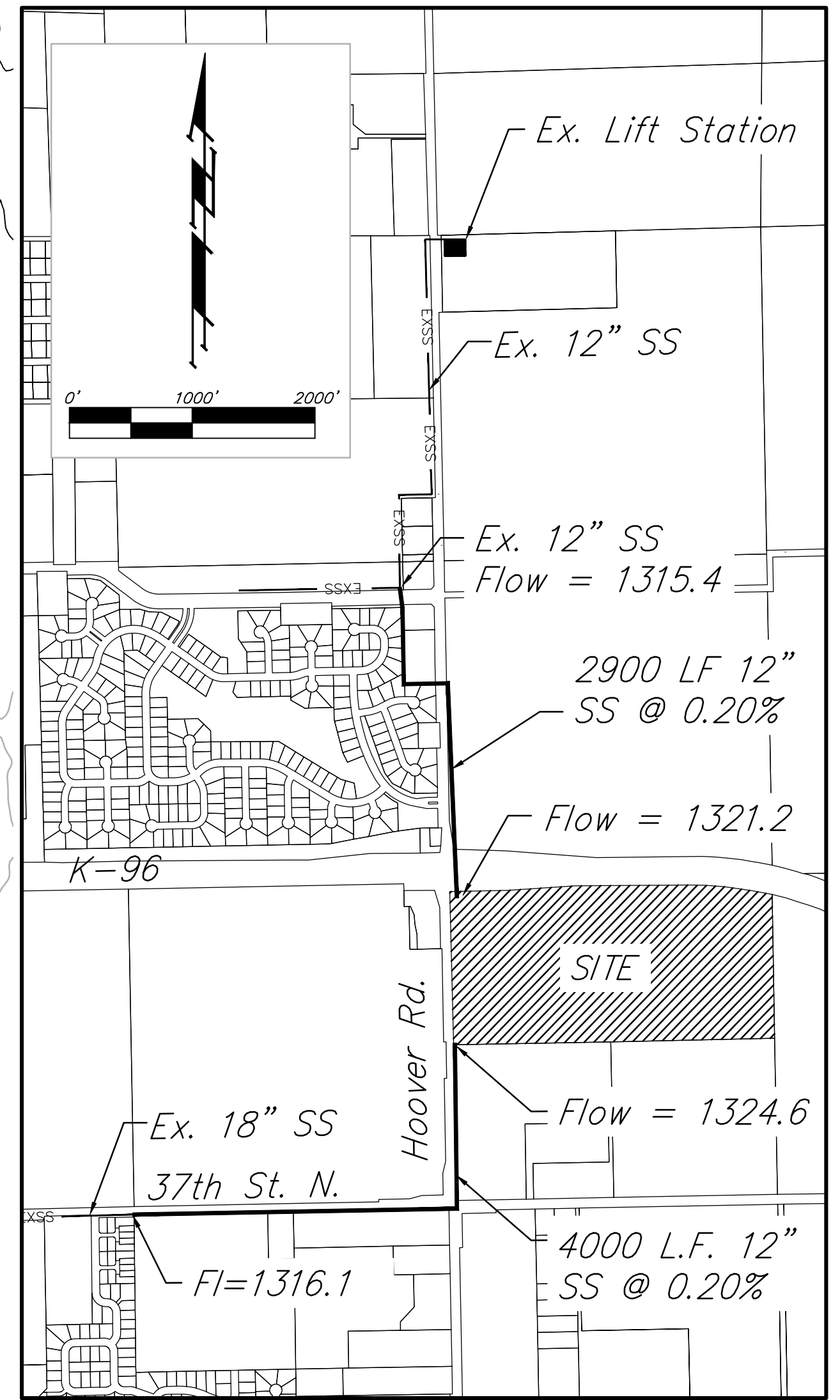
UTILITY CONCEPT

HOOVER INDUSTRIAL PARK ADDITION

SEDGWICK COUNTY, KANSAS



OPTIONS FOR MAIN EXTENSION TO SITE



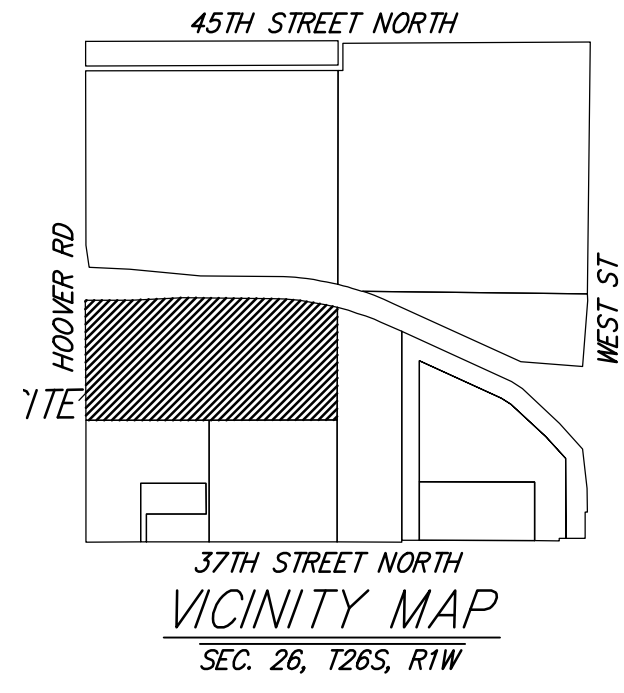
CONNECTION TO MAIN AT TIME OF DEVELOPMENT ASSUMED FLOW ELEVATION OF 1324.6.

NOTES:

Onsite Lift Station may be required.

As shown, sewer mains are too shallow when extended to site to provide adequate sewer depth assuming 8" laterals throughout.

Routing 10" site sewer laterals (@ 0.25%) and with the site filled to development depth may allow adequate sewer depth if connection is made to north main.



LEGEND

---	Proposed Water Line (8" Unless Noted Otherwise)
— WTR —	Existing Water Line (8" Unless Noted Otherwise)
♀	Proposed Fire Hydrant
♀	Existing Fire Hydrant
✕	Existing Fire Hydrant Removed
---	Proposed Sanitary Sewer Line (8" Unless Noted Otherwise)
— EXSS —	Existing Sanitary Sewer Line (8" Unless Noted Otherwise)
SSMH ●	Existing Sanitary Sewer Manhole
◎	Proposed Sanitary Sewer Manhole
XXXX.XX	Proposed Sanitary Sewer Flow