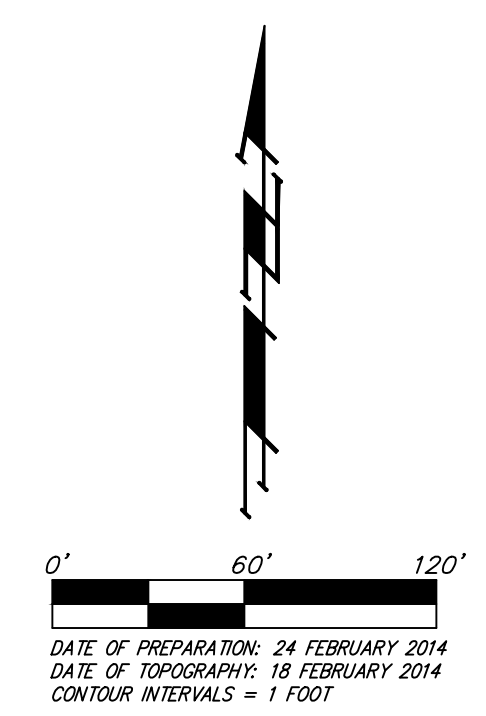


UTILITY CONCEPT  
**HAWTHORNE 5TH ADDITION**  
 WICHITA, SEDGWICK COUNTY, KANSAS



**OWNER:**  
 HUTTON DEVELOPMENT, LLC  
 2229 S WEST ST.  
 WICHITA, KS 67213  
 316-440-8580

**LEGAL DESCRIPTION:**  
 A REPLAT OF ALL OF LOT 1, BLOCK 6 AND ALL OF RESERVE "C", HAWTHORNE ADDITION, AN ADDITION TO WICHITA, SEDGWICK COUNTY, KANSAS, TOGETHER WITH THE NORTH 24x55 FEET OF LOT 6, BLOCK 6 IN SAID HAWTHORNE ADDITION.

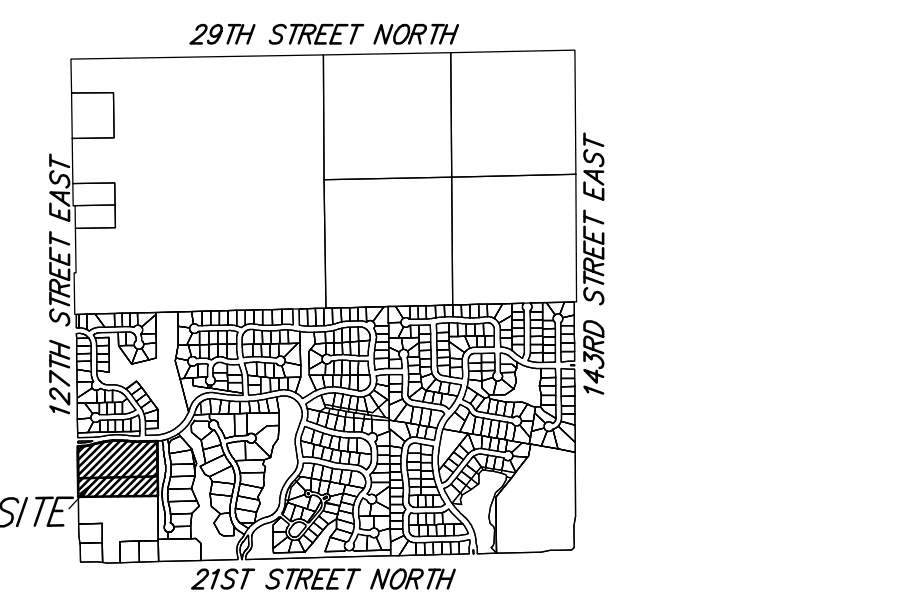
**BENCHMARK:**  
 SQUARE CUT TOP OF CURB INLET SOUTH SIDE OF CAMDEN CASE 50' WEST OF THE NORTHEAST CORNER OF PLAT.  
 ELEVATION = 1361.07 (NAVD89)

RESERVE "A" IS RESERVED FOR OPEN SPACE, LANDSCAPING, STREETS, DRAINAGE PURPOSES, ENTRY MONUMENTS AND UTILITIES.  
 RESERVES "B" & "C" ARE RESERVED FOR OPEN SPACE, LANDSCAPING, ENTRY MONUMENTS, SCREENING WALLS, DRAINAGE PURPOSES AND UTILITIES AS CONFINED TO EASEMENTS.  
 RESERVE "D" IS RESERVED FOR OPEN SPACE, LANDSCAPING, SIDEWALKS, DRAINAGE PURPOSES, BERMS, GAZEBOS, PARKING, UTILITIES AS CONFINED TO EASEMENTS, ENTRY MONUMENTS, FENCES, PLAYGROUNDS, A CLUBHOUSE AND RELATED APPURTENANCES, AND NEIGHBORHOOD SWIMMING POOL AND RELATED APPURTENANCES. THERE SHALL BE NO BUILDING SETBACK REQUIREMENTS IN SAID RESERVE "D" ALONG ANY PUBLIC RIGHTS-OF-WAY. THE PARKING EASEMENTS WITHIN SAID RESERVE "D" SHALL BE USED EXCLUSIVELY FOR RESIDENTIAL PARKING. NO OBSTRUCTIONS SHALL BE CONSTRUCTED OR PLACED ON OR WITHIN THE PARKING EASEMENT IN SAID RESERVE "D". RESERVE "E" IS RESERVED FOR OPEN SPACE, LANDSCAPING, DRAINAGE PURPOSES, UTILITIES AS CONFINED TO EASEMENT, AND WALLS AS CONFINED TO EASEMENT.

■ = #5 REBAR W/ "MKEC" CAP (FOUND)  
 ■ = #4 REBAR W/ "BAUGHMAN" CAP (SET)  
 ■ = #5 REBAR W/ "SEDGWICK COUNTY" CAP (FOUND)  
 = 1/2" IRON IN THIMBLE (FOUND)

- DI □ = Drop Inlet
- EB □ = Electric Box
- EH □ = Fire Hydrant
- ICV □ = Irrigation Control Valve - Valve Box
- LP ○ = Light Pole
- PP □ = Power Pole
- SP □ = Sign
- SSMH ● = Sanitary Sewer Manhole
- ATT Ped □ = ATT Pedestal
- FOMR □ = ATT Fiber Optic Marker
- TR ○ = Tree
- WV ● = Water Valve

- WTR — WTR — WATER LINE
- AT&T — AT&T — AT&T LINE
- GAS — GAS — GAS LINE
- COV — COV — CABLE TV
- OHE — OHE — OVERHEAD ELECTRIC LINE
- EXSS — EXSS — SANITARY SEWER
- UE — UE — UNDERGROUND ELECTRIC LINE



- LEGEND**
- Proposed Water Line (8" Unless Noted Otherwise)
  - Existing Water Line (8" Unless Noted Otherwise)
  - ♀ Proposed Fire Hydrant
  - ♀ Existing Fire Hydrant
  - ⊗ Existing Fire Hydrant Removed
  - Proposed Sanitary Sewer Line (8" Unless Noted Otherwise)
  - Existing Sanitary Sewer Line (8" Unless Noted Otherwise)
  - SSMH ● Existing Sanitary Sewer Manhole
  - ⊙ Proposed Sanitary Sewer Manhole
  - XXXXXX Proposed Sanitary Sewer Flow

