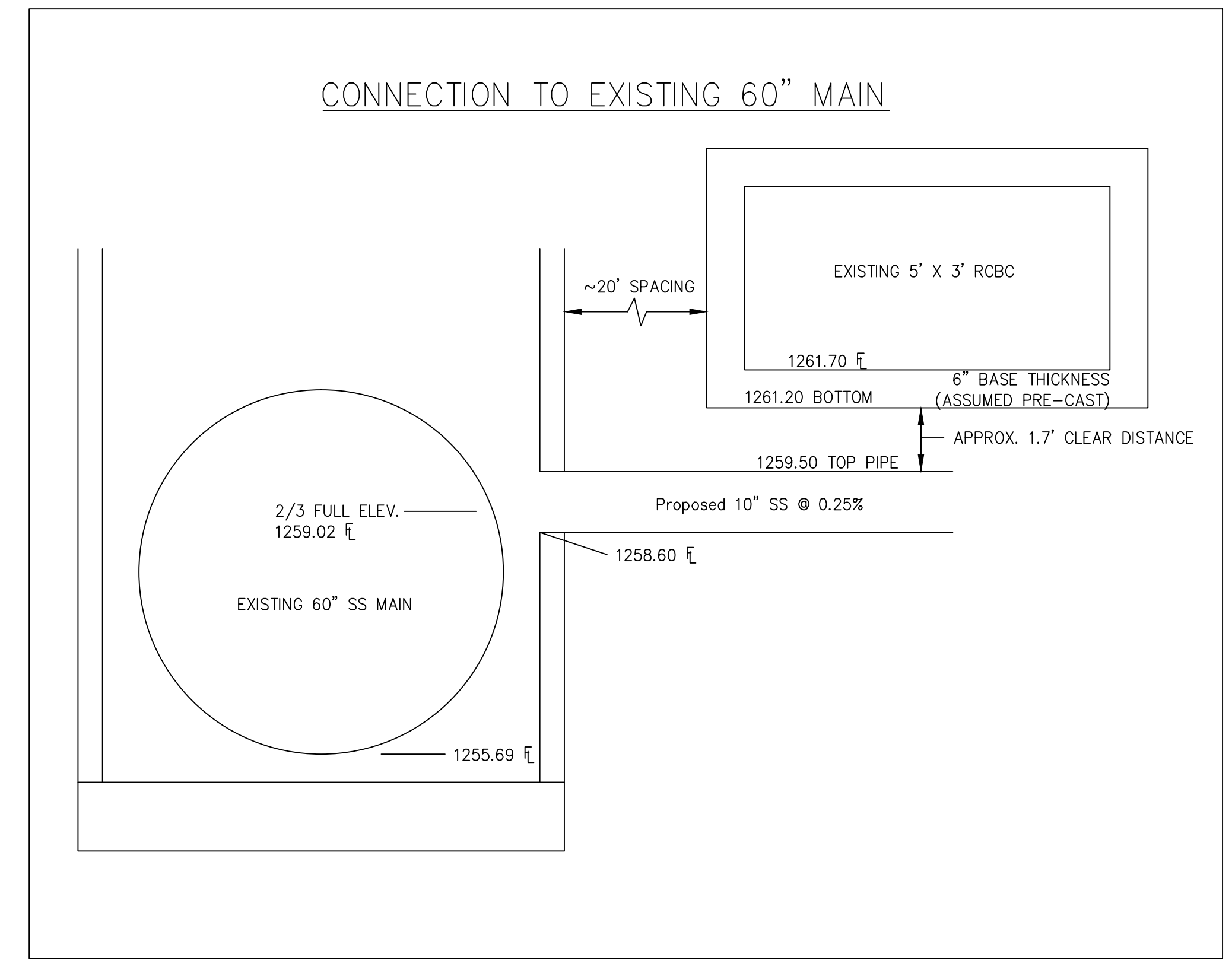
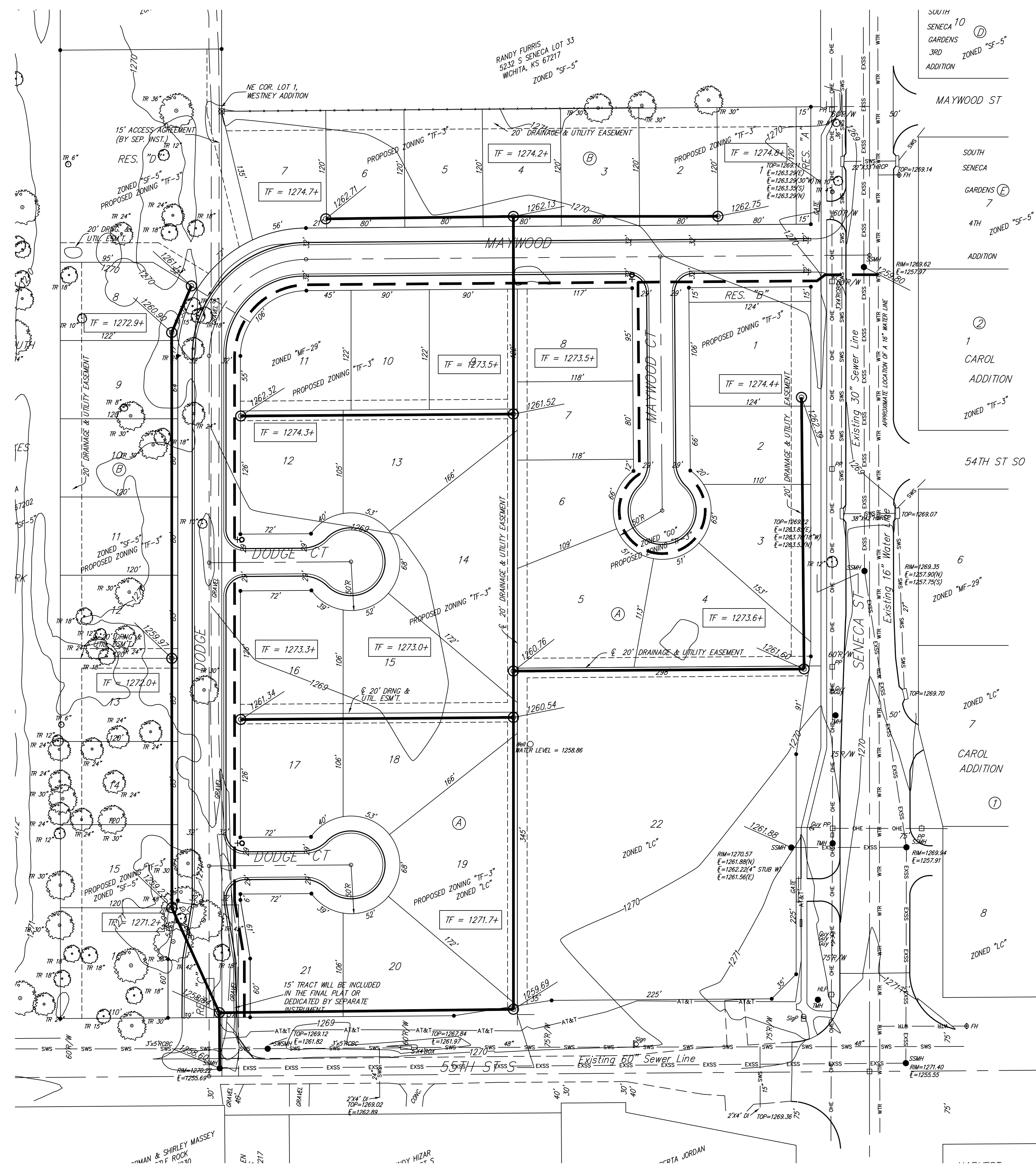
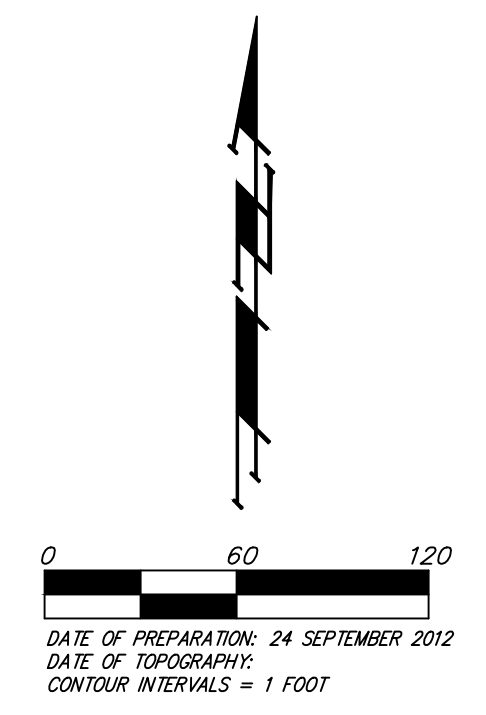


# UTILITY PLAN

## WESTNEY 2ND ADDITION WICHITA, SEDGWICK COUNTY, KANSAS



#### LEGEND

- Proposed Water Line (8" Unless Noted Otherwise)
- Existing Water Line (8" Unless Noted Otherwise)
- ♀ Proposed Fire Hydrant
- ♂ Existing Fire Hydrant
- ✕ Existing Fire Hydrant Removed
- Proposed Sanitary Sewer Line (8" Unless Noted Otherwise)
- Existing Sanitary Sewer Line (8" Unless Noted Otherwise)
- SSMH Existing Sanitary Sewer Manhole
- ⊙ Proposed Sanitary Sewer Manhole
- /XXXX.XX Proposed Sanitary Sewer Flow
- TF = 1273.2+ Minimum Top Foundation Elevation

**NOTES:**  
1) All proposed sewer laterals shall be 10" with 0.25% minimum slope.

