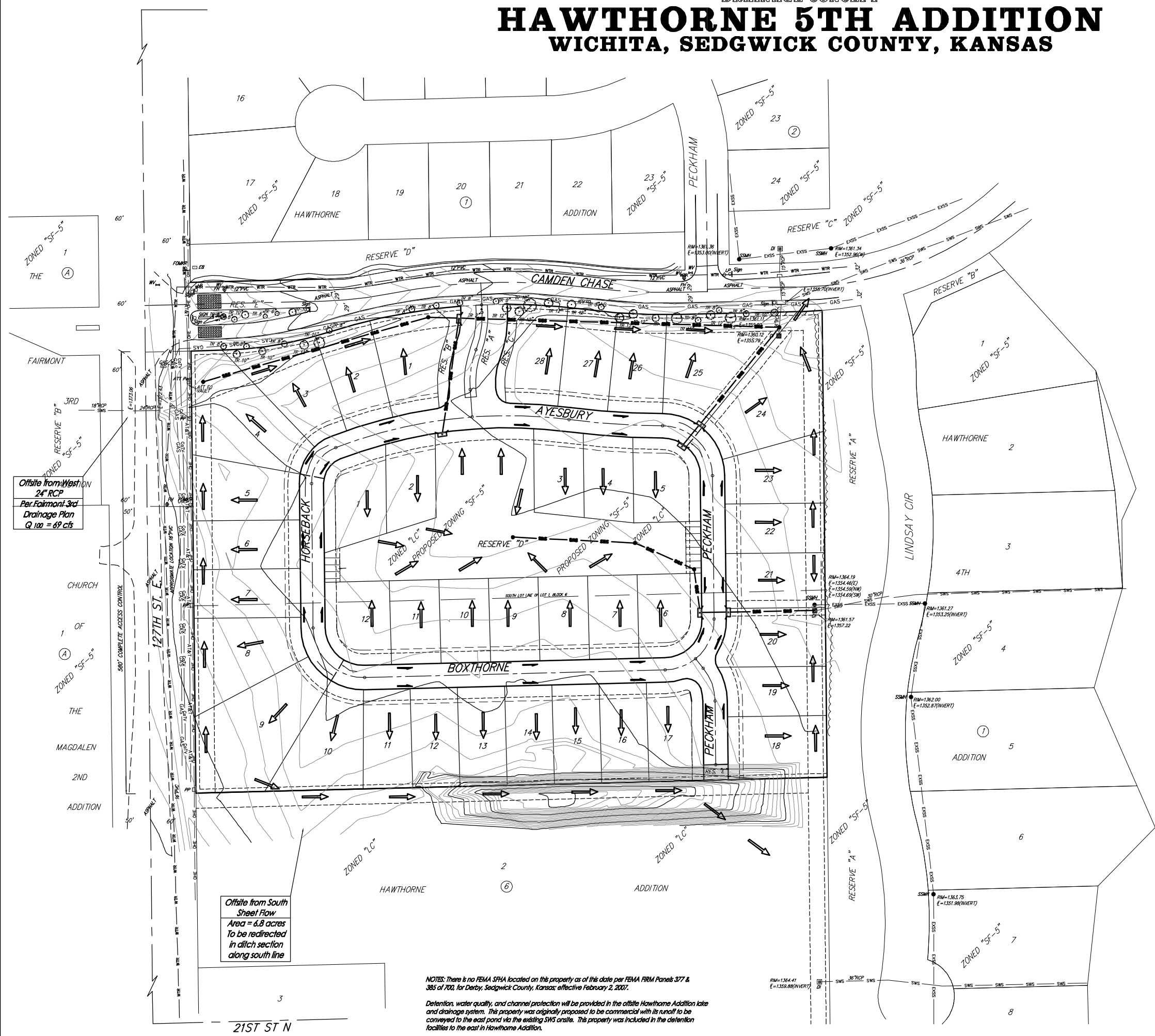
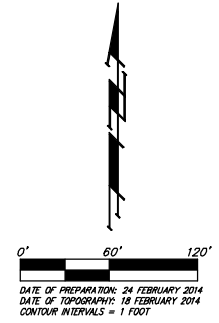


# DRAINAGE CONCEPT

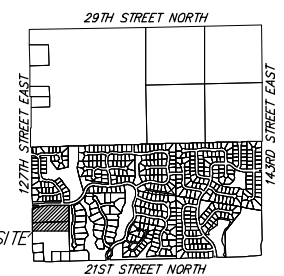
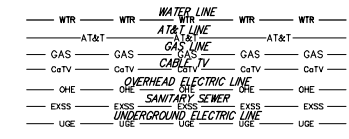
## HAWTHORNE 5TH ADDITION

### WICHITA, SEDGWICK COUNTY, KANSAS



RESERVE "A" IS RESERVED FOR OPEN SPACE, LANDSCAPING, STREETS, DRAINAGE PURPOSES, ENTRY MONUMENTS AND UTILITIES.  
 RESERVES "B" & "C" ARE RESERVED FOR OPEN SPACE, LANDSCAPING, ENTRY MONUMENTS, SCREENING WALLS, DRAINAGE PURPOSES AND UTILITIES AS CONFINED TO EASEMENTS.  
 RESERVE "D" IS RESERVED FOR OPEN SPACE, LANDSCAPING, SIDEWALKS, DRAINAGE PURPOSES, BEENS, GAZEBOS, PARKING, UTILITIES AS CONFINED TO EASEMENTS, ENTRY MONUMENTS, FENCES, PLAYGROUNDS, A CLUBHOUSE AND RELATED APPURTENANCES, AND NEIGHBORHOOD SWIMMING POOL, AND RELATED APPURTENANCES. THERE SHALL BE NO BUILDING SETBACK REQUIREMENTS IN SAID RESERVE "D" ALONG ANY PUBLIC RIGHTS-OF-WAY. THE PARKING EASEMENTS WITHIN SAID RESERVE "D" SHALL BE USED EXCLUSIVELY FOR RESIDENTIAL PARKING. NO OBSTRUCTIONS SHALL BE CONSTRUCTED OR PLACED ON OR WITHIN THE PARKING EASEMENT IN SAID RESERVE "D". RESERVE "E" IS RESERVED FOR OPEN SPACE, LANDSCAPING, DRAINAGE PURPOSES, UTILITIES AS CONFINED TO EASEMENT, AND WALLS AS CONFINED TO EASEMENT.

- = Drop Inlet
- = Electric Box
- = Fire Hydrant
- = Irrigation Control Valve - Valve Box
- = Light Pole
- = Power Pole
- = Sign
- = Sanitary Sewer Manhole
- = ATT Pedestal
- = ATT Fiber Optic Marker
- TR = Tree
- = Water Valve



VICINITY MAP  
SEC. 2, T27S, R2E

NOTES: There is no FEMA SFHA located on this property as of this date per FEMA FRM Panels 377 & 385 of 700, for Derby, Sedgwick County, Kansas; effective February 2, 2007.

Detention, water quality, and channel protection will be provided in the offsite Hawthorne Addition lake and drainage system. This property was originally proposed to be commercial with its runoff to be conveyed to the east pond via the existing SWS onsite. This property was included in the detention facilities to the east in Hawthorne Addition.

**DRAINAGE CONCEPT**  
**HAWTHORNE 5TH ADDITION**  
 26 FEB 2014

**Baughman Company, P.A.**  
 315 Ellis St. Wichita, KS 67211 P 316-262-7271 F 316-262-0149  
 ENGINEERING | SURVEYING | PLANNING | LANDSCAPE ARCHITECTURE

B:\PROJECTS\HAWTHORNE 5TH ADDITION\HAWTHORNE 5TH ADDITION\DWG\HAWTHORNE 5TH ADDITION\DWG\DRAIN PLAN.DWG