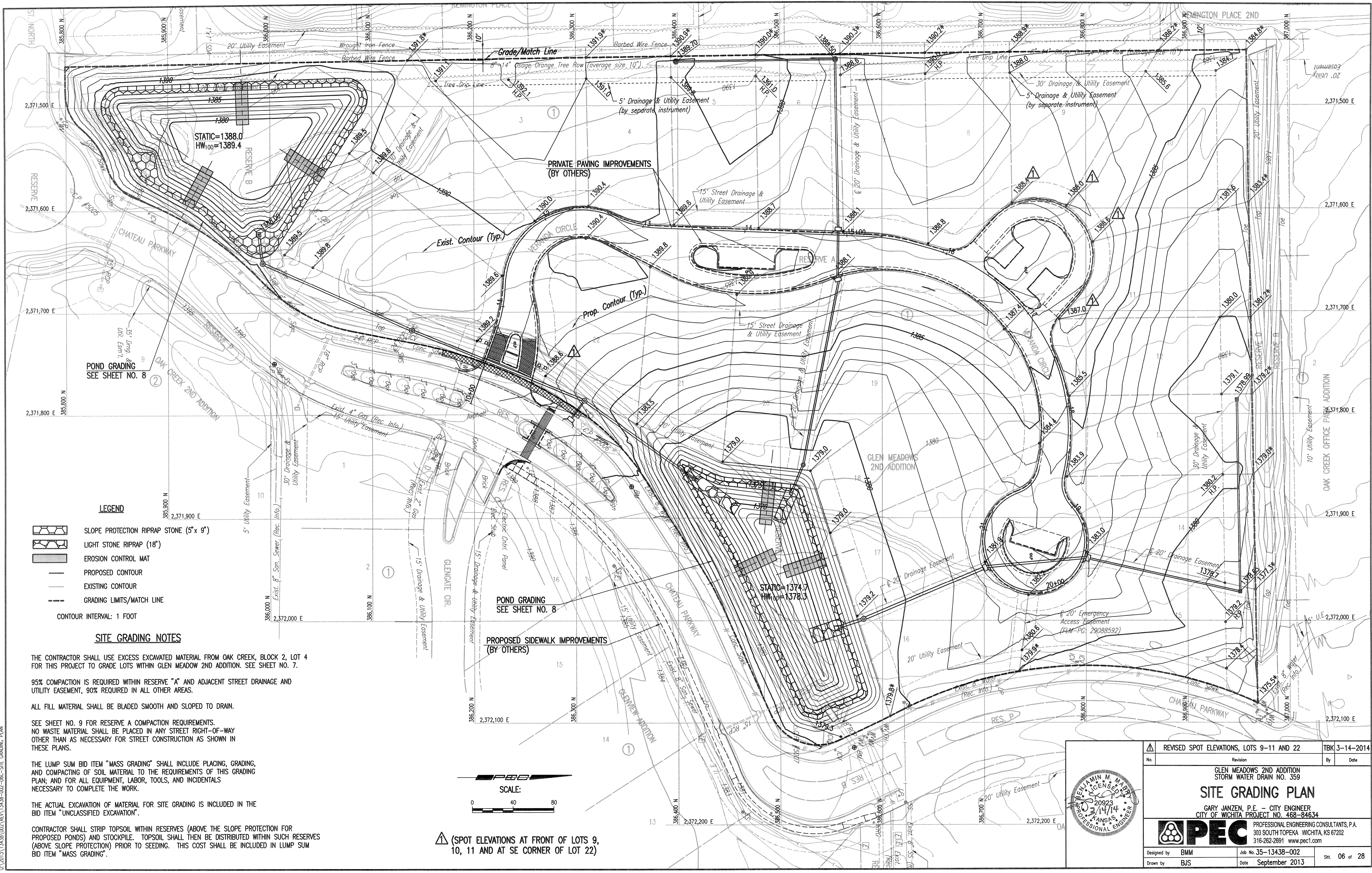


Saved 03-14-2014 3:46:53 PM by BJS
 Plot Scale 1:1 03-14-2014 3:51:00 PM by BJS
 C:\2013\13438\002\REV\13438-002-06C-SITE GRADING PLAN



LEGEND

- SLOPE PROTECTION RIPRAP STONE (5' x 9')
 - LIGHT STONE RIPRAP (18')
 - EROSION CONTROL MAT
 - PROPOSED CONTOUR
 - EXISTING CONTOUR
 - GRADING LIMITS/MATCH LINE
- CONTOUR INTERVAL: 1 FOOT

SITE GRADING NOTES

THE CONTRACTOR SHALL USE EXCESS EXCAVATED MATERIAL FROM OAK CREEK, BLOCK 2, LOT 4 FOR THIS PROJECT TO GRADE LOTS WITHIN GLEN MEADOW 2ND ADDITION. SEE SHEET NO. 7.

95% COMPACTION IS REQUIRED WITHIN RESERVE "A" AND ADJACENT STREET DRAINAGE AND UTILITY EASEMENT, 90% REQUIRED IN ALL OTHER AREAS.

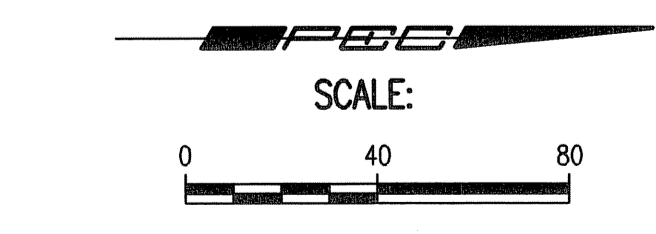
ALL FILL MATERIAL SHALL BE BLADED SMOOTH AND SLOPED TO DRAIN.

SEE SHEET NO. 9 FOR RESERVE A COMPACTION REQUIREMENTS.
NO WASTE MATERIAL SHALL BE PLACED IN ANY STREET RIGHT-OF-WAY OTHER THAN AS NECESSARY FOR STREET CONSTRUCTION AS SHOWN IN THESE PLANS.

THE LUMP SUM BID ITEM "MASS GRADING" SHALL INCLUDE PLACING, GRADING, AND COMPACTING OF SOIL MATERIAL TO THE REQUIREMENTS OF THIS GRADING PLAN; AND FOR ALL EQUIPMENT, LABOR, TOOLS, AND INCIDENTALS NECESSARY TO COMPLETE THE WORK.

THE ACTUAL EXCAVATION OF MATERIAL FOR SITE GRADING IS INCLUDED IN THE BID ITEM "UNCLASSIFIED EXCAVATION".

CONTRACTOR SHALL STRIP TOPSOIL WITHIN RESERVES (ABOVE THE SLOPE PROTECTION FOR PROPOSED PONDS) AND STOCKPILE. TOPSOIL SHALL THEN BE DISTRIBUTED WITHIN SUCH RESERVES (ABOVE SLOPE PROTECTION) PRIOR TO SEEDING. THIS COST SHALL BE INCLUDED IN LUMP SUM BID ITEM "MASS GRADING".



▲ (SPOT ELEVATIONS AT FRONT OF LOTS 9, 10, 11 AND AT SE CORNER OF LOT 22)

▲ REVISED SPOT ELEVATIONS, LOTS 9-11 AND 22 No. _____ Revision _____ By _____ Date _____		TBK 3-14-2014
GLEN MEADOWS 2ND ADDITION STORM WATER DRAIN NO. 359		
SITE GRADING PLAN		
GARY JANZEN, P.E. - CITY ENGINEER CITY OF WICHITA PROJECT NO. 468-84634		
Designed by BMM	Job No. 35-13438-002	Sht. 06 of 28
Drawn by BJS	Date September 2013	