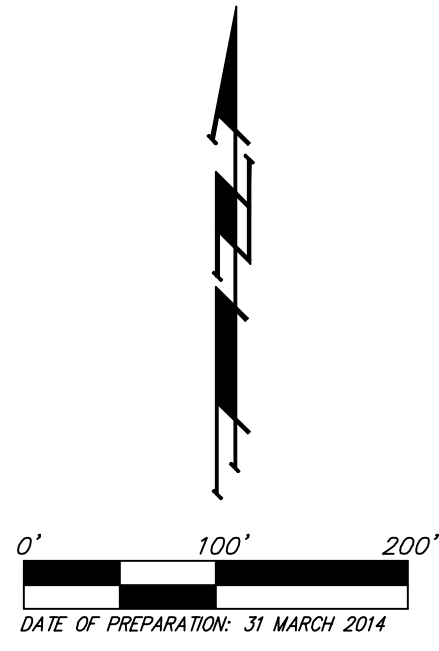


UTILITY PLAN

FALCON FALLS 5TH ADDITION

WICHITA, SEDGWICK COUNTY, KANSAS



- = #4 REBAR W/ "BAUGHMAN" CAP (SET)
- = 1/2" IRON (FOUND)
- △ = STONE (FOUND)
- = #5 REBAR IN THIMBLE (FOUND)
- ⊗ = 1/2" SQUARE BOLT (FOUND)
- ⊗ = 3/4" IRON W/ "BAUGHMAN" CAP (SET)

- (M) = MEASURED
- (D) = DESCRIBED
- (C) = CALCULATED
- (C-D) = CALCULATED PER DESCRIBED INFO.

ADDITIONAL BUILDING SETBACK REQUIREMENTS PER COMMUNITY UNIT PLAN DP-263.

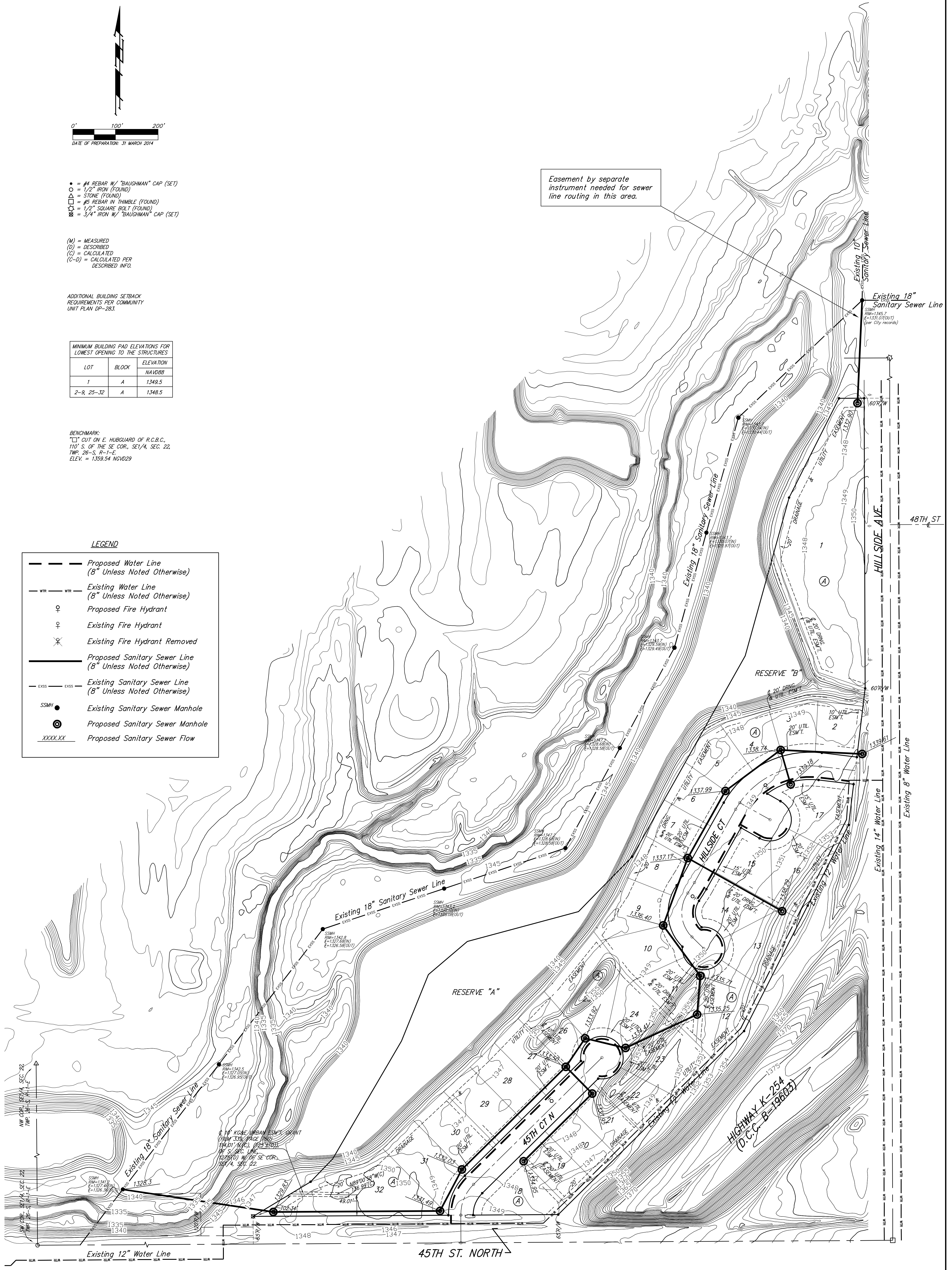
MINIMUM BUILDING PAD ELEVATIONS FOR LOWEST OPENING TO THE STRUCTURES		
LOT	BLOCK	ELEVATION NAVD88
1	A	1349.5
2-9, 25-32	A	1348.5

BENCHMARK:
 "C" CUT ON E. HUBGLARD OF R.C.B.C.,
 110' S. OF THE SE COR., SE 1/4, SEC. 22,
 TWP. 26-S., R-1-E.
 ELEV. = 1359.54 NGVD29

LEGEND

- Proposed Water Line (8" Unless Noted Otherwise)
- Existing Water Line (8" Unless Noted Otherwise)
- ♀ Proposed Fire Hydrant
- ♀ Existing Fire Hydrant
- ⊗ Existing Fire Hydrant Removed
- Existing 18" Sanitary Sewer Line (8" Unless Noted Otherwise)
- Existing Sanitary Sewer Line (8" Unless Noted Otherwise)
- SSMH Existing Sanitary Sewer Manhole
- ⊗ Proposed Sanitary Sewer Manhole
- XXXX.XX Proposed Sanitary Sewer Flow

Easement by separate instrument needed for sewer line routing in this area.



FALCON FALLS 5TH ADDITION

3 APRIL 2014

Baughman Company, P.A.
 315 Ellis St. Wichita, KS 67211 P 316-262-7271 F 316-262-0149
 Baughman ENGINEERING | SURVEYING | PLANNING | LANDSCAPE ARCHITECTURE